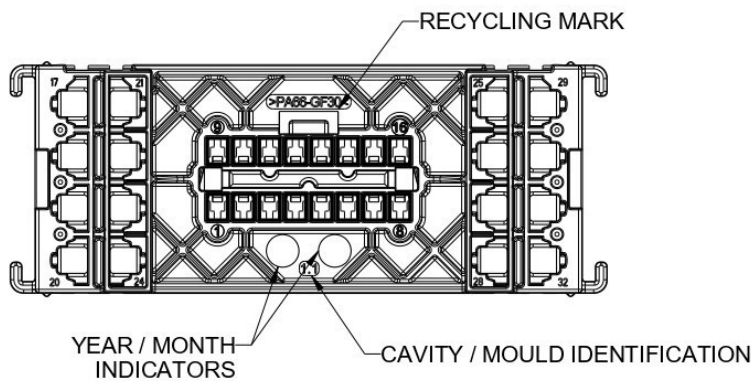
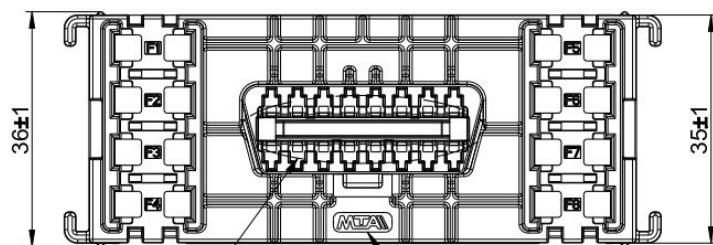
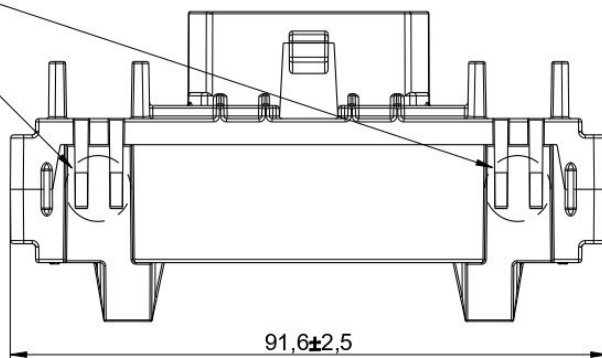


M 0101375

SCHEDA TECNICA



CAVITIES FOR
MINIFUSES SEC. LOCK
(OPT.)



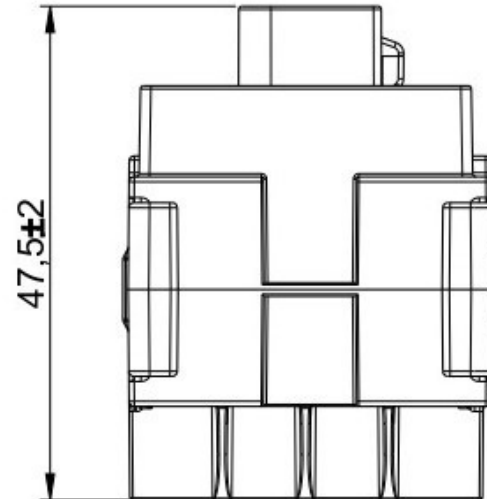
CAVITY FOR OBD
SEC. LOCK



ASSOCIATED INTERFACES TABLE REFERENCE			
DENOMINATION	CAVITY No.	MTA P/N	DELPHI P/N
F280 TERMINALS FOR MINIFUSES (NO BUSBAR VERSION)	17-18-19-20	1708330/xx	-
	21-22-23-24	1708331/xx	-
	25-26-27-28	1708332/xx	-
F280 TERMINAL BUSBAR VERSION	21-22-23-24	1708335/xx	-
	25-26-27-28	1708336/xx	-
SICMA3 F150 TERMINALS FOR OBD CONNECTION	1-2-3-4-5-6-7-8-9-10-11-12-13-14-15-16	-	13625048
		-	13764603
		-	13777390
		-	10863984
		-	13602481
		-	13764604
		-	10865182
		-	33501712
		-	33500701
		-	13777391
		-	10863985
-	33511808		
-	13764602		
SECONDARY LOCK FOR OBD CONNECTION	-	0300791/xx	-
SECONDARY LOCK FOR MINIFUSES (OPTIONAL)	-	0301601/xx	-



OPERATING FEATURES		
FEATURES	UNIT	VALUE
V MAX	V	32
TEMPERATURE RANGE (INCLUDED OVERHEATING)	°C	-40 / +125
IP	IEC 529	20
FLAMMABILITY	UL 94	HB
	FMVSS 302	≤ 100 mm/min
DISCARD FALLEN PIECES ©		
FUNCTIONAL CHARACTERISTICS		
OBD TERMINAL INSERTION LOAD	N	≤ 15
OBD TERMINAL RETENTION LOAD (ONLY PRIMARY LOCK)	N	≥ 50
OBD TERMINAL RETENTION LOAD (ASSEMBLED SECONDARY LOCK)	N	≥ 70
OBD SECONDARY LOCK INSERTION LOAD	N	≤ 25
OBD SECONDARY LOCK CLOSING FORCE WITH ONE OR MORE TERMINALS IMPROPERLY ASSEMBLED	N	≥ 60
MINIFUSE TERMINAL INSERTION LOAD	N	≤ 15
MINIFUSE TERMINAL RETENTION LOAD	N	≥ 120
MINIFUSE SECONDARY LOCK (OPTIONAL) INSERTION LOAD	N	≤ 40
MINIFUSE SECONDARY LOCK (OPTIONAL) CLOSING FORCE WITH ONE OR MORE TERMINALS IMPROPERLY ASSEMBLED	N	≥ 100
FUSES INSERTION LOAD	N	≤ 50
FUSES EXTRACTION LOAD	N	8+50
MODULE INSERTION LOAD (INTO COUNTERPART)	N	≤ 70
MODULE RETENTION LOAD (FROM COUNTERPART)	N	≥ 120
*280 PIN FUSES LENGTH ADMITTED	mm	Min. 7 - Max. 8
ADDITIONAL NOTE		
* EACH APPLICATION WITH DIFFERENT LENGTH HAVE TO BE VERIFIED AND AUDITED		
- ACCORDING TO UNI 15031-3:2016 SAE J1962:2015 MTA DEVELOPED AN OBD MODULE TYPE A ①		
- UNSUITABLE FOR TRACKED		
- CONNECTION AND DISCONNECTION FORCE: ACCORDING TO UNI 15031-3:2016 SAE J1962:2015		
- OBD CONNECTOR WRONG POLARIZATION ASSEMBLY: ACCORDING TO UNI 15031-3:2016 SAE J1962:2015		
- SICMA3 CONTACTS CURRENT CAPACITY AND CONTACT RESISTANCE: ACCORDING TO UNI 15031-3:2016 SAE J1962:2015		
- CURRENT LOAD ON EACH MINIFUSE ACCORDING TO F280 DERATING CURVE		
- VIBRATION AND MECHANICAL SHOCK: ACCORDING TO UNI 15031-3:2016 SAE J1962:2015		



3D VIEW
SCALE 1:2

