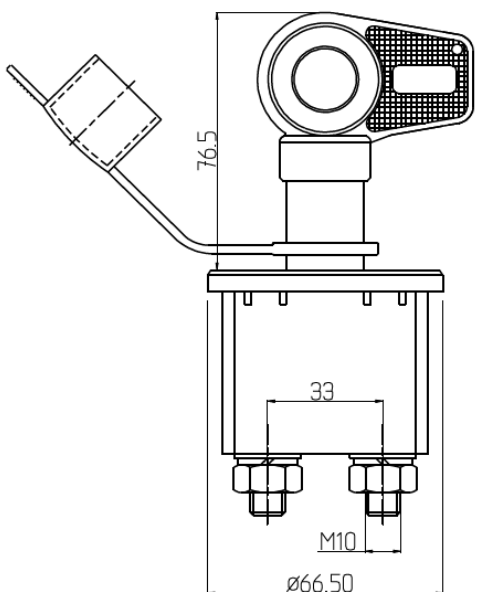


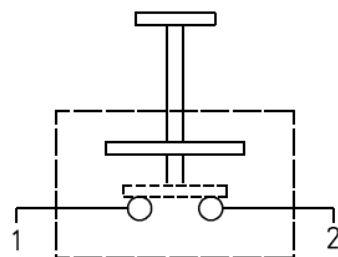
M 08060260 - staccabatteria 12/24V 150A con chiave estraibile

SWITCHING UNDER LOAD POSSIBLE

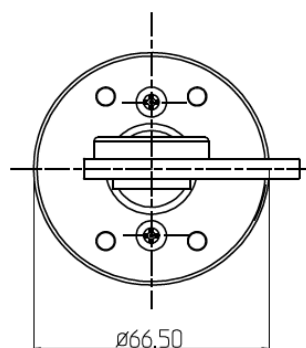
Norminal voltage.maximum.	12 - 24 V DC
Continuous load.maximum.	250 A
Short term loading.maximum.	2500 A/10 seconds
Dust ingress	IP 54
Operation Temperature	-30 C / +60 C
Siwitch Function	2P SPST OFF-ON



circuit schema



1-2 Battery seperation



20	KEYWAY	ZAMAK 5	1
19	KEY PIN	FREE-ACHINING 4mm	1
18	CONICAL SPRING	C QUALITY SPRING STEEL	1
17	PALLET SPRING	C QUALITY SPRING STEEL	1
16	ORING 13X2		1
15	RIVET		4
14	M10 NUT		2
13	SCREW	COPPER WIRE 1/2 TOUGH ø8,80mm	2
12	FLAT WASHER		2
11	NAIL WASHER		2
10	M10 SPRING WASHER		2
9	BRIDGE	COPPER	1
8	SPRING GRIPPER SHAFT	N66 NAT. BLACK	1
7	ORING GRIPPER COVER	N66 NAT. BLACK	1
6	SPRING- PRESSURE PLASTIC	N66 NAT. BLACK	1
5	SPRING SEAT	N66 NAT. BLACK	1
4	LOWER BODY	2 N66 ELY + 1 N66 EPD	1
3	UPPER BODY	2 N66 ELY + 1 N66 EPD	1
2	GASKET		1
1	KEY	POLYPROPYLENE	1
NO	PART NAME	MATERIALS	PIECE

