

M 08080300

SCHEDA TECNICA

INTERRUTTORI GENERALI DI CORRENTE

150 A

BATTERY MAIN SWITCHES • BATTERIETRENNSCHALTER • INTERRUPTEURS GENERAUX DE COURANT

080803 00

Con azionamento mediante chiave estraibile
With removable handle
Mit abziehbarem Hebel
Avec clé enlevable

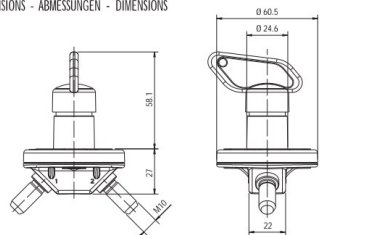


| ARTICOLO - ITEM No. - ARTIKEL-Nr. - ARTICLE | 080803 00 |
|---|--|
| Tensione nominale - Nominal tension Nennspannung - Tension nominale | MAX 24 V |
| Corrente massima continua - Max. continuous operating current Max. Nennstrom bei Dauerbetrieb - Courant max. d'utilisation | 150 A |
| Corrente massima di breve durata - Highest load Belastbarkeit - Courant max. pour courte durée | 1200 A x 5 sec |
| Grado di protezione - Protection degree Schutzgrad - Degree de protection | IP 65 |
| Temperatura d'impiego - Operating temp. Betriebstemperatur - Temperature d'utilisation | - 30°C / + 60°C |
| Contatti - Contacts Kontakte - Contacts | Rame argentato - Silver plated copper Versilberetes Kupfer - Cuivre argenté |
| Dadi per contatti - Nuts Mutter - Ecrous | M10 |
| Accessori* - Accessories* Zubehör* - Accessoires* | 009022 00 - 009027 00 |

* Accessori: vedi fine capitolo - Components: see end of section - Zubehör: siehe Ende des Kapitels - Accessoires: voir fin du chapitre.

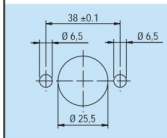
DISEGNI DIMENSIONALI

DIMENSIONS - ABMESSUNGEN - DIMENSIONS



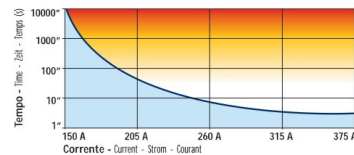
SCHEMA FORATURA PER FISSAGGIO

HOLES FOR FIXATION
BOHRUNGEN FÜR BEFESTIGUNG
TROUS POUR FIXATION



CURVA DI PORTATA

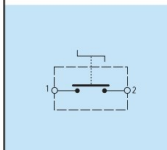
LOAD CURVE - BELASTUNGSKURVE - COURBE DE PORTEE



Con cavo sezione 70 mm² - With cable section 70 mm² - Mit Kabelquerschnitt 70 mm² - Avec câble de section 70 mm²

SCHEMA ELETTRICO

WIRING DIAGRAM
SCHALTSCHEMA
BRANCHEMENT



mes connettori
componenti per il cablaggio