

# M 1-1564542-1K



MINIKIT

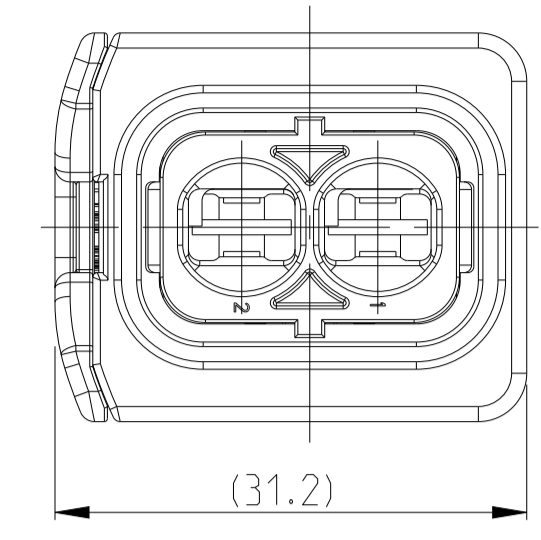
*Proseguire nella pagina successiva per visualizzare la scheda tecnica dei componenti*

Revisione	Prodotto
REV.00 14/04/2026	OEM

1-1564542-1 AS SHOWN  
1-1564542-1 wie gezeigt

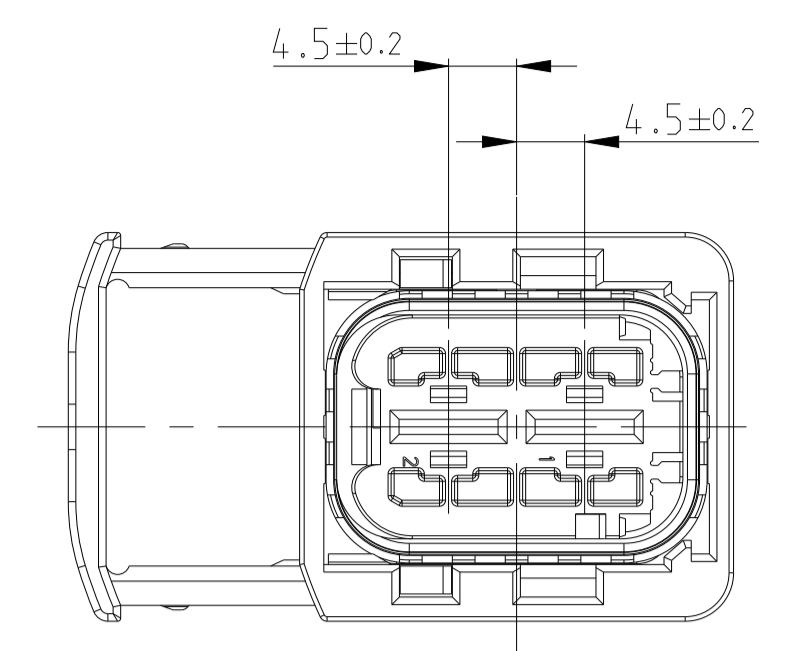
REV. NO.	DATE	BY	CHK	DESCRIPTION
J1	15MAY2015	SK	Krauss	ECR-15-007756
J2	24AUG2021	DRK	AW	ECR-21-111166
J3	02MAR2022	NS	AW	PCN-22-132727
J4	17JUL2023	DM	AW	REVISED PER PCN-23-181149

SLIDE IN LOCKED POSITION  
Schieber in Verriegelungsposition



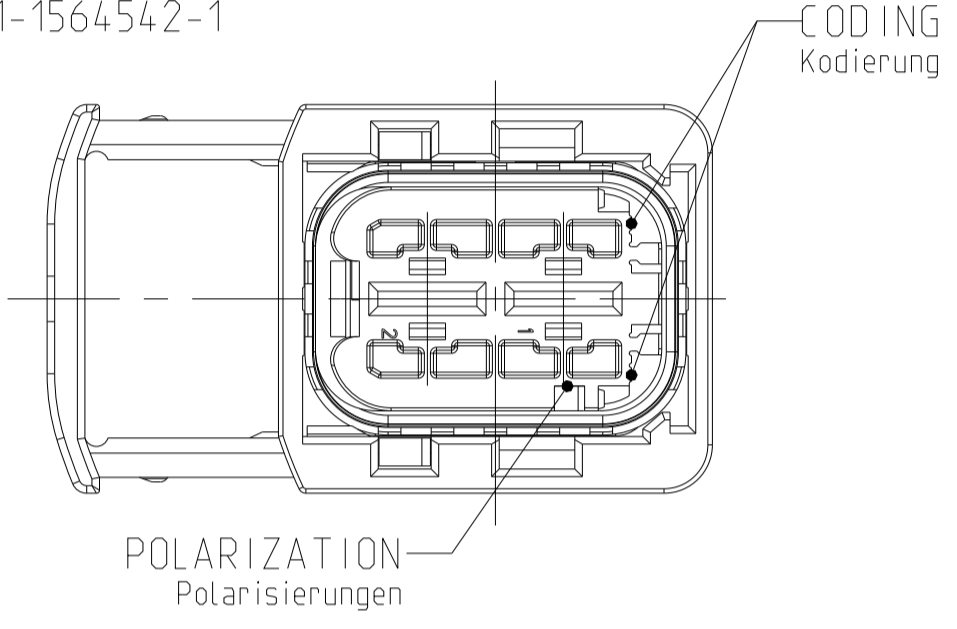
DELIVERY CONDITION:  
Lieferzustand:

SECONDARY LOCKING AND SLIDE  
IN PRE-LOCKED POSITION  
2. Kontaktsicherung und Schieber  
in Vorraststellung

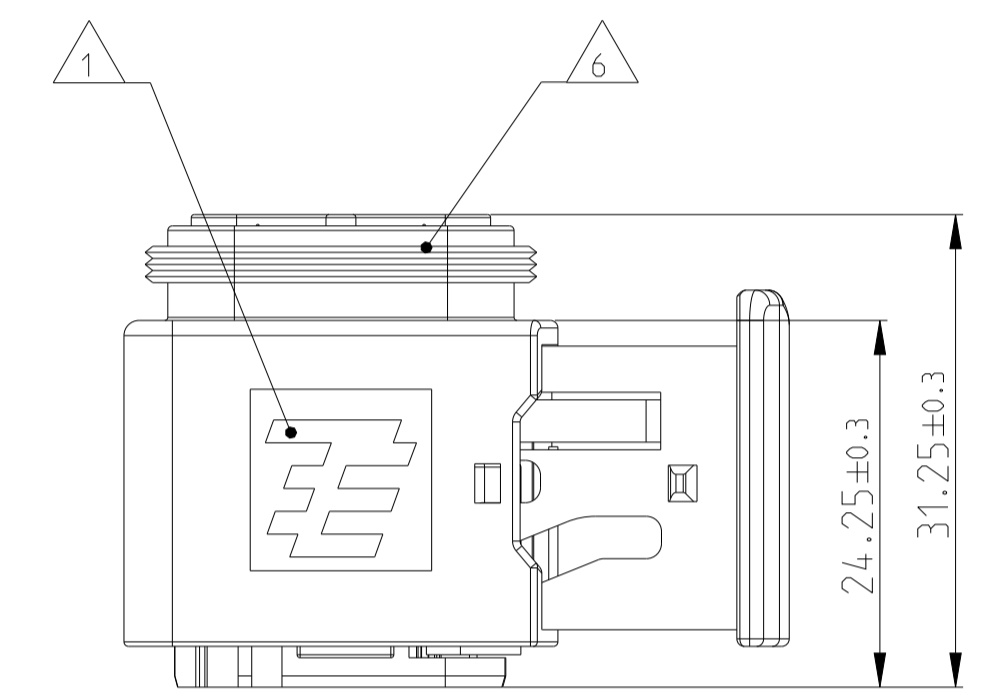
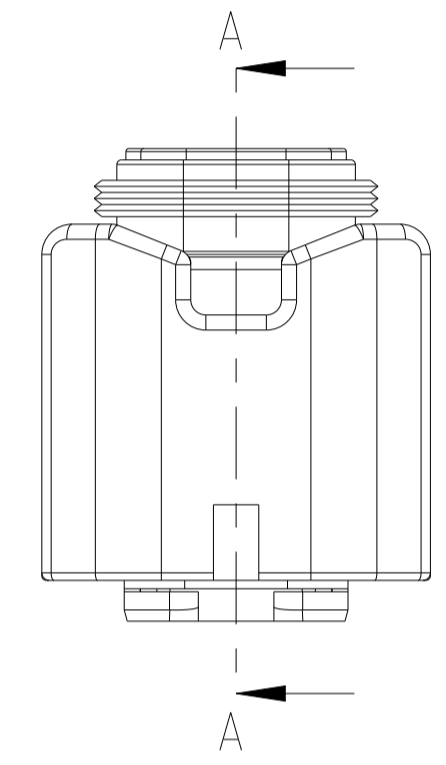
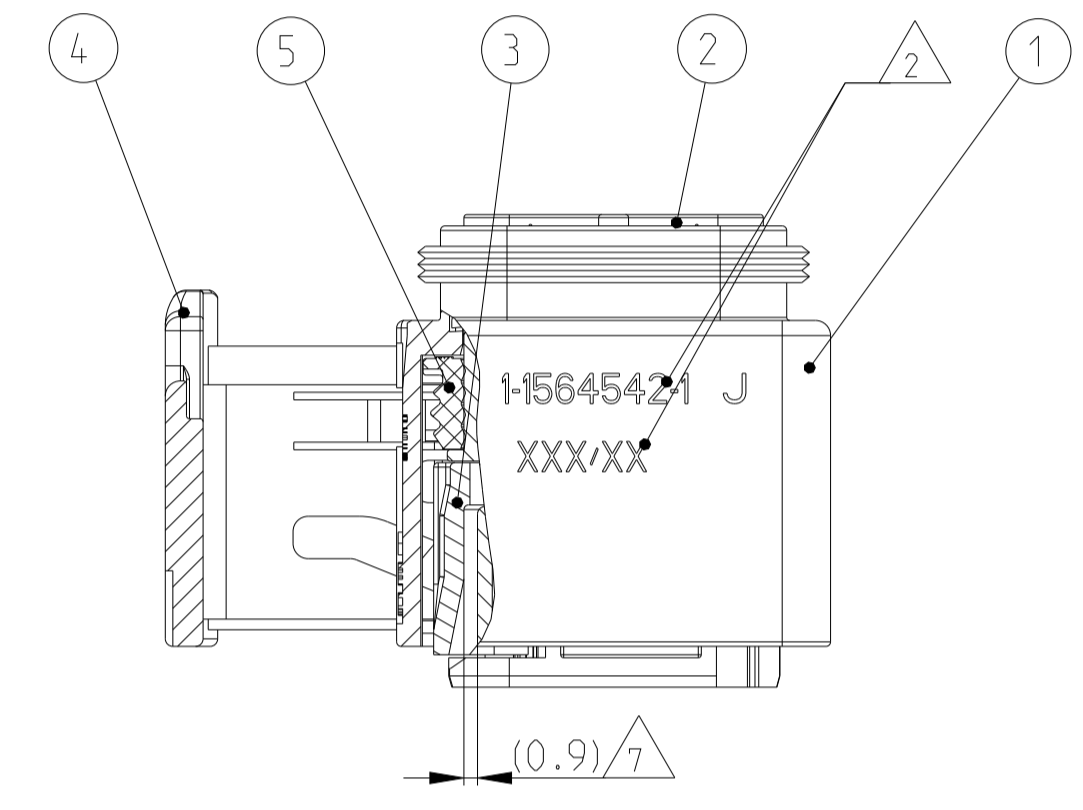


CODING A  
Kodierung

PN 1-1564542-1



SECTION A-A  
Schnitt

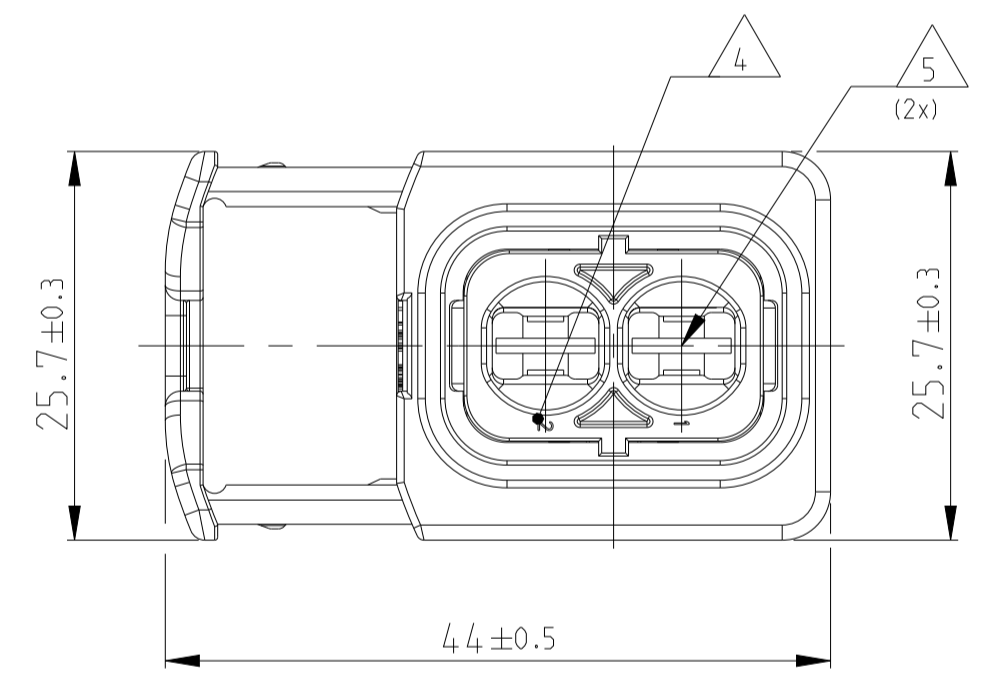
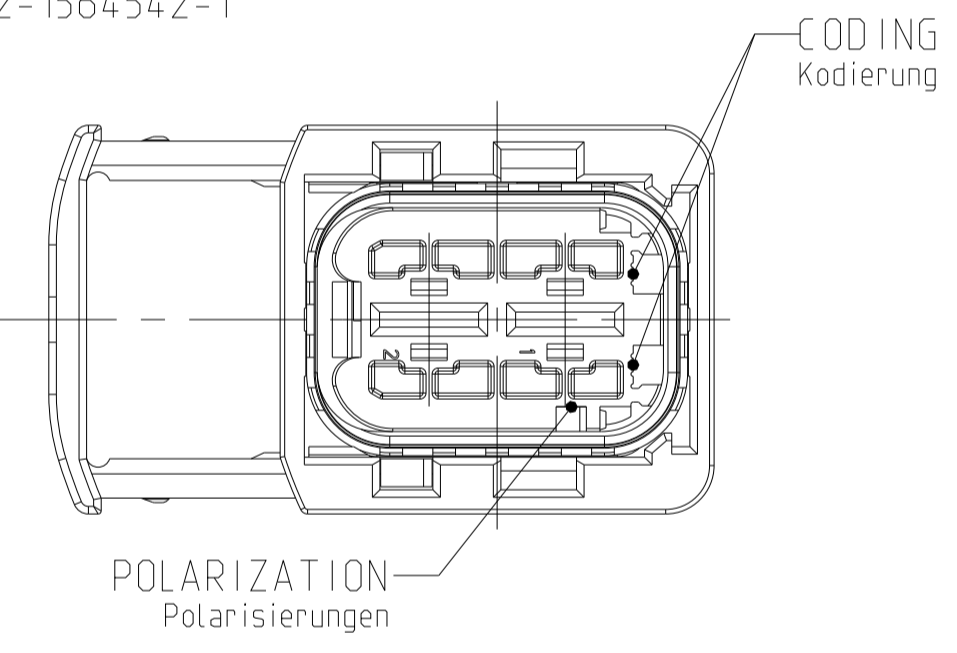


NOTES  
Bemerkungen

- TE LOGO  
TE Logo
- ASSY PN, PRODUCTION DATE (CALENDAR DAY/YEAR):  
MARKING OPTIONAL AS LASER ENGRAVING OR  
LASER WITH COLOR CHANGE  
Assy PN, Produktionsdatum (Kalendertag/Jahr):  
Beschriftung wahlweise als Lasergravur oder Laser mit Farbumschlag
- BULK PACKAGING IN CORRUGATED BOX  
Schuttgut im Versandkarton
- CAVITY NUMBERING  
Kammer Bezeichnung
- CAVITIES MATED WITH AMP MCP 6.3/4.8K  
SEE PRODUCT GROUP DRAWING  
TE NO: 1241438  
MAX. WIRE SIZE: 6.0mm<sup>2</sup> FLR  
Kontaktkammern passend fuer AMP MCP 6.3/4.8K  
siehe Produktgruppenzeichnung  
TE Nr.: 1241438  
max. Drahtgrößenbereich: 6.0mm<sup>2</sup> FLR
- SUITABLE COVERS PN 1670057, 1670364  
Passende Kappen PN 1670057, 1670364
- SLIDING DISTANCE OF SECONDARY LOCKING  
Verschiebeweg der 2. Kontaktsicherung
- FITS TO TYCO INTERFACE DRAWING 114-18740-1  
Passend zur Ausfuehrungsvorschrift 114-18740-1
- SUITABLE COUNTERPART TE-NO. 1564544, 1564546  
passendes Gegenstueck TE-Nr. 1564544, 1564546
- MALFUNCTION CAUSED BY LACQUER IS NOT  
COVERED BY TYCO ELECTRONICS WARRANTY.  
Funktionsbeeinträchtigung durch Lackieren liegt nicht im  
Einfluss und Gewährleistungsumfang von Tyco Electronics.

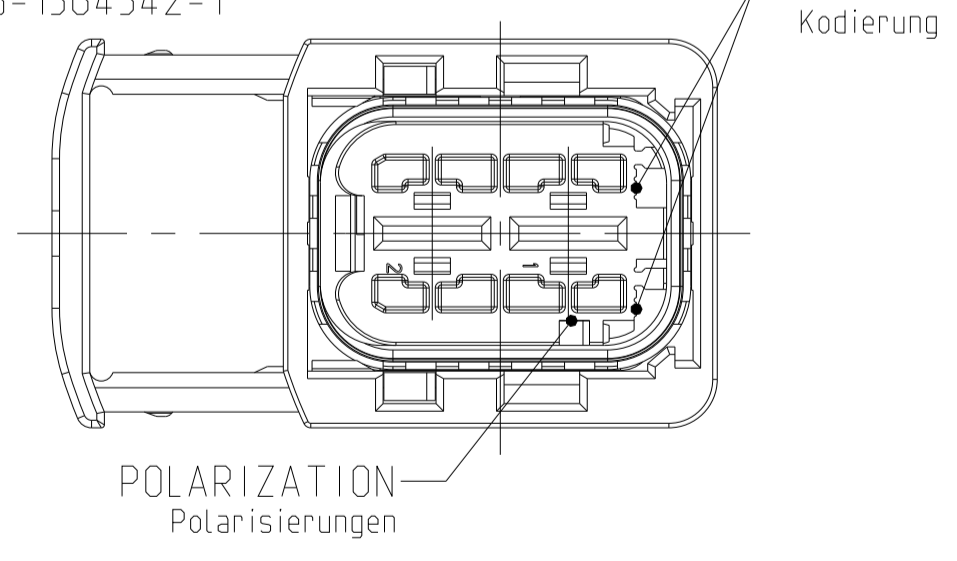
CODING B  
Kodierung

PN 2-1564542-1



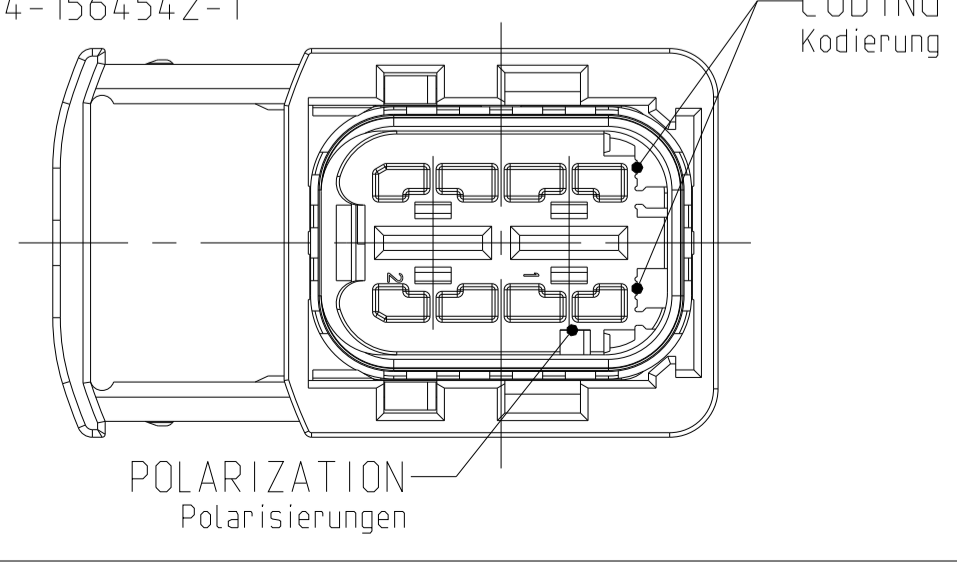
CODING C  
Kodierung

PN 3-1564542-1

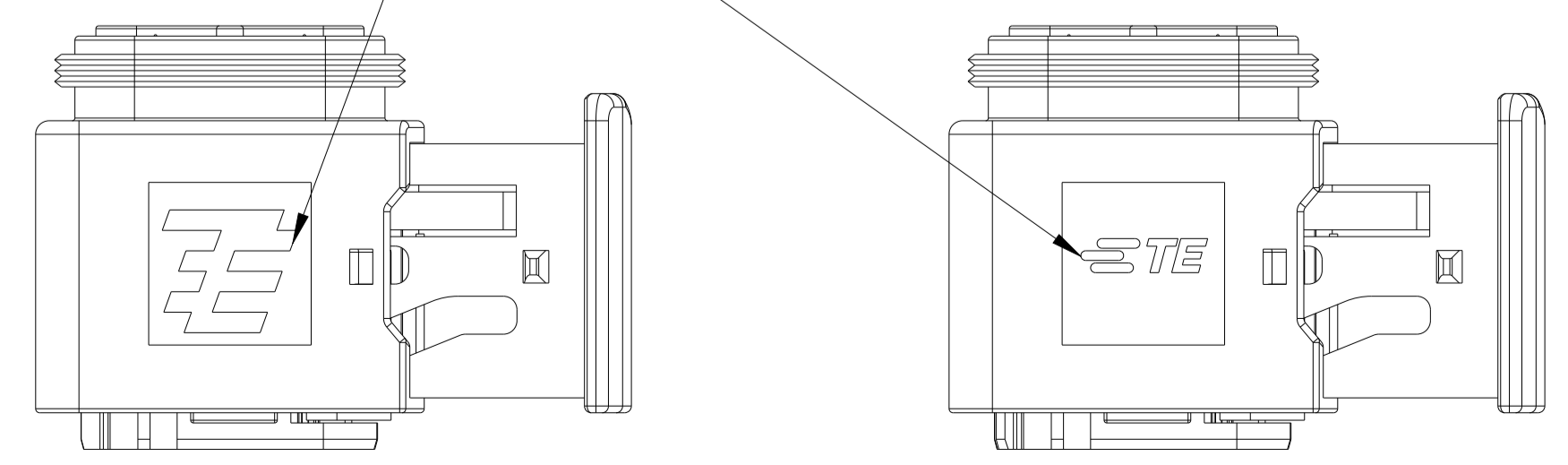


CODING D  
Kodierung

PN 4-1564542-1



TE LOGO RELATED TO MOLDING TOOL  
TE LOGO abhaengig vom Spritzgusswerkzeug



ITEM NO	DESCRIPTION	RECEPTACLE HOUSING	BLACK	GREEN	BLUE	YELLOW	WHITE	SEAL
1	RECEPTACLE HOUSING	PBT-GF30 / V-0	schwarz	gruen	blau	gelb	weiss	Dichtung
2	2POS. CAVITY BLOCK, CODE, "A"	PBT-GF30 / V-0	schwarz	gruen	blau	gelb	weiss	
2	2POS. CAVITY BLOCK, CODE, "C"	PBT-GF30 / V-0	schwarz	gruen	blau	gelb	weiss	
2	2POS. CAVITY BLOCK, CODE, "D"	PBT-GF30 / V-0	schwarz	gruen	blau	gelb	weiss	
3	2POS. CAVITY BLOCK, CODE, "D"	PBT-GF30 / V-0	schwarz	gruen	blau	gelb	weiss	
4	U-SLIDE	PBT-GF30 / V-0	schwarz	gruen	blau	gelb	weiss	
5	SEAL	MVO	schwarz	gruen	blau	gelb	weiss	

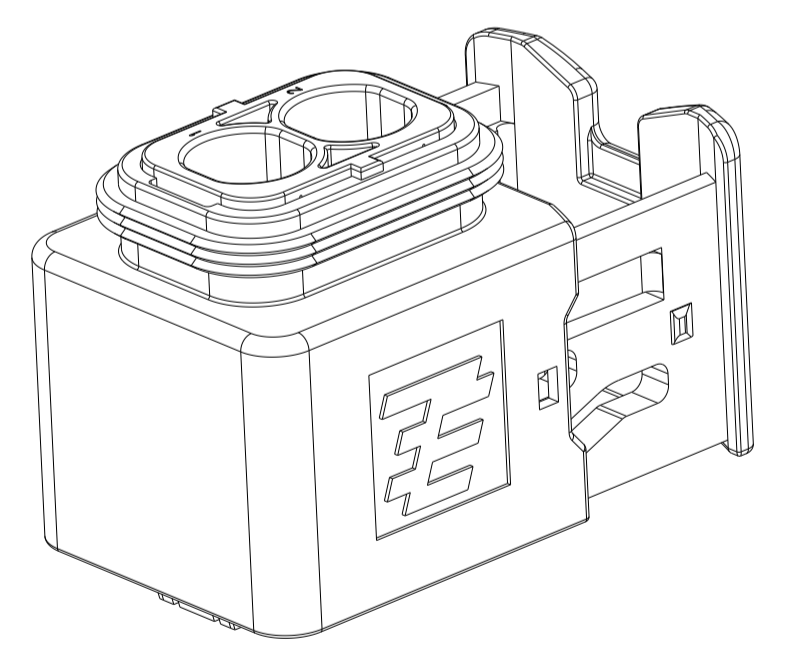
TE ORDER-NO.	REV.	NO. OF POS.	CODE	QUANTITY	ITEM NO	DESCRIPTION	MATERIAL	COLOUR
4-1564542-1	J	2	D	1	1	1	1	1
3-1564542-1	J	2	C	1	1	1	1	1
2-1564542-1	J	2	B	1	1	1	1	1
1-1564542-1	J	2	A	1	1	1	1	1

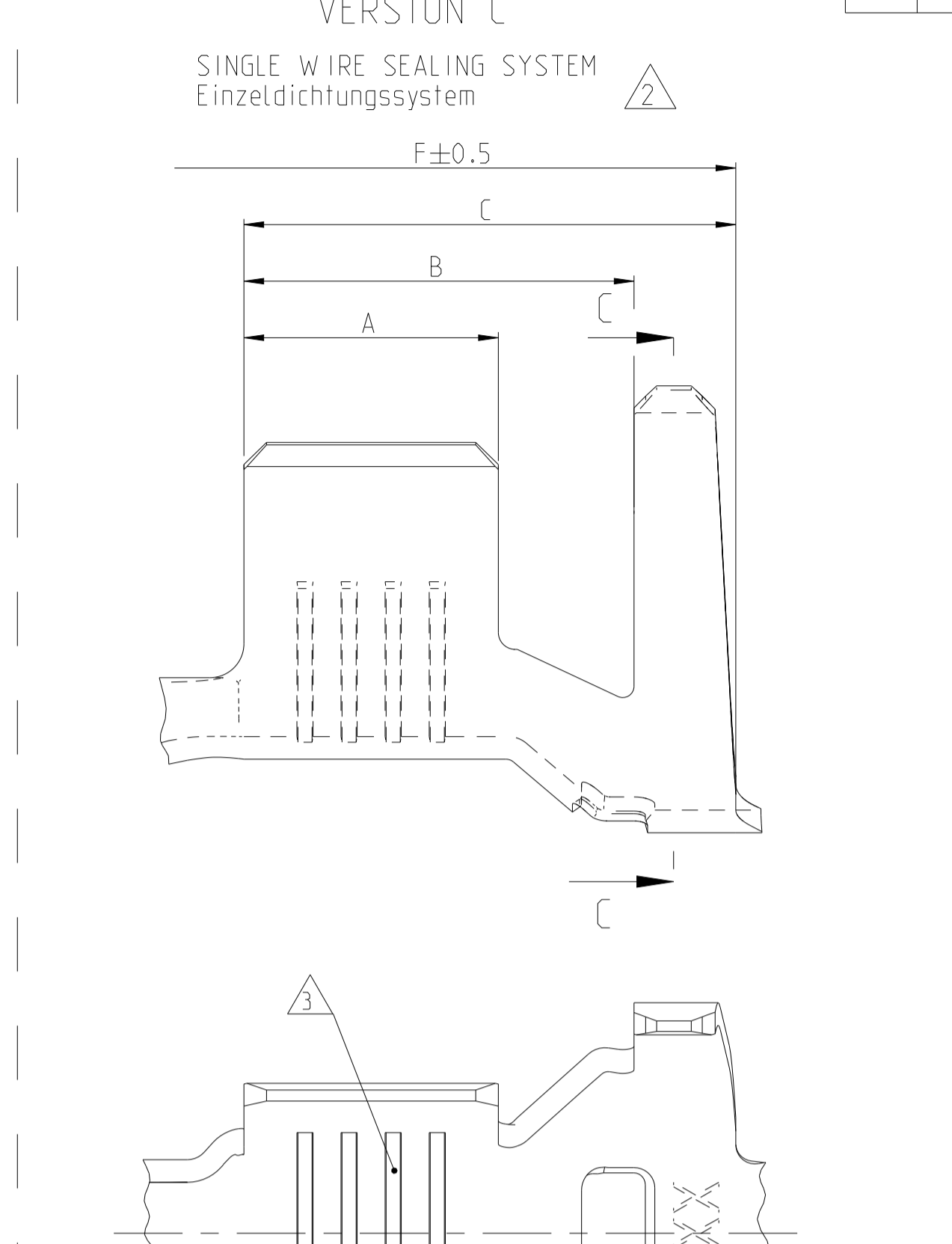
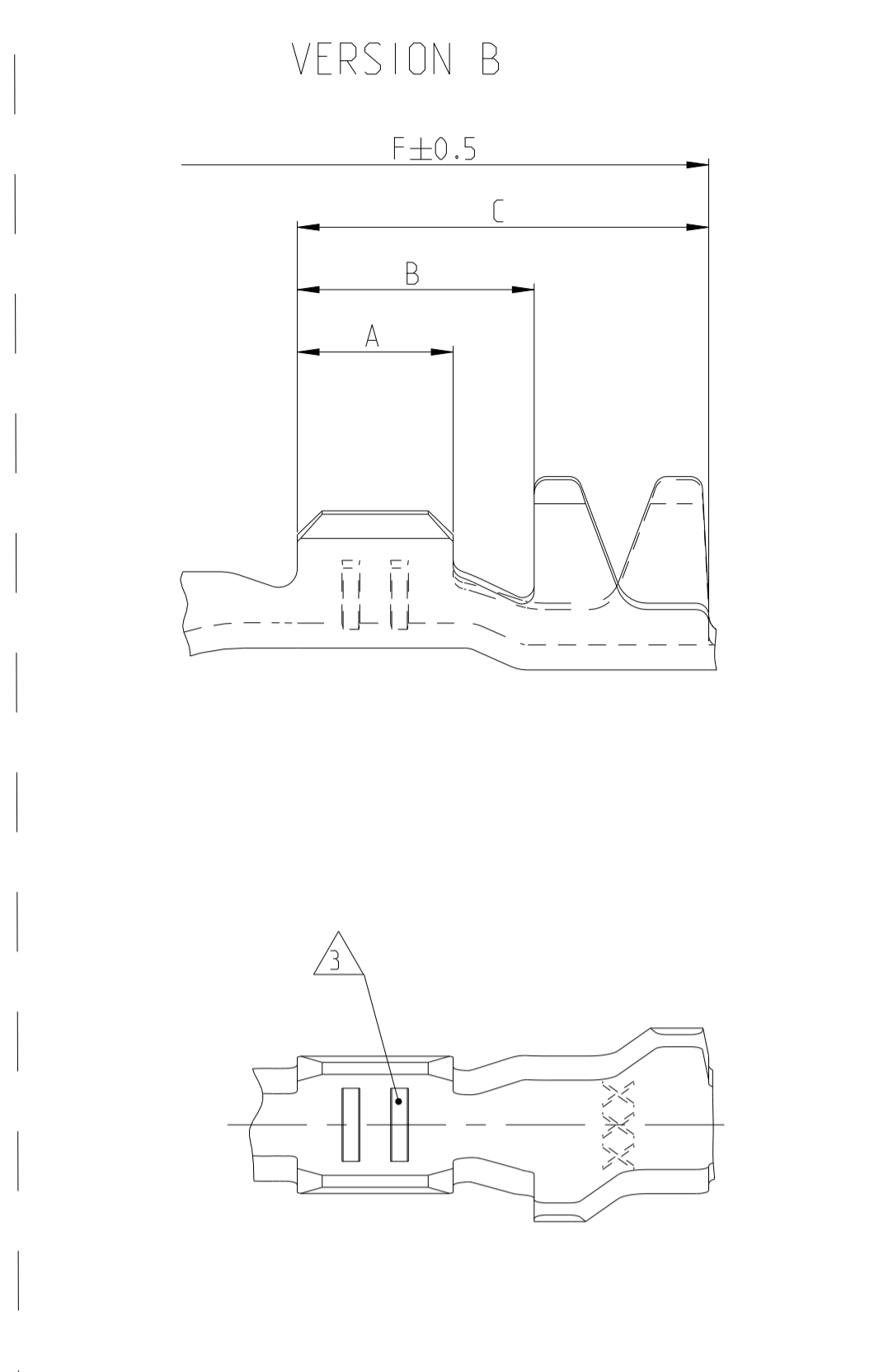
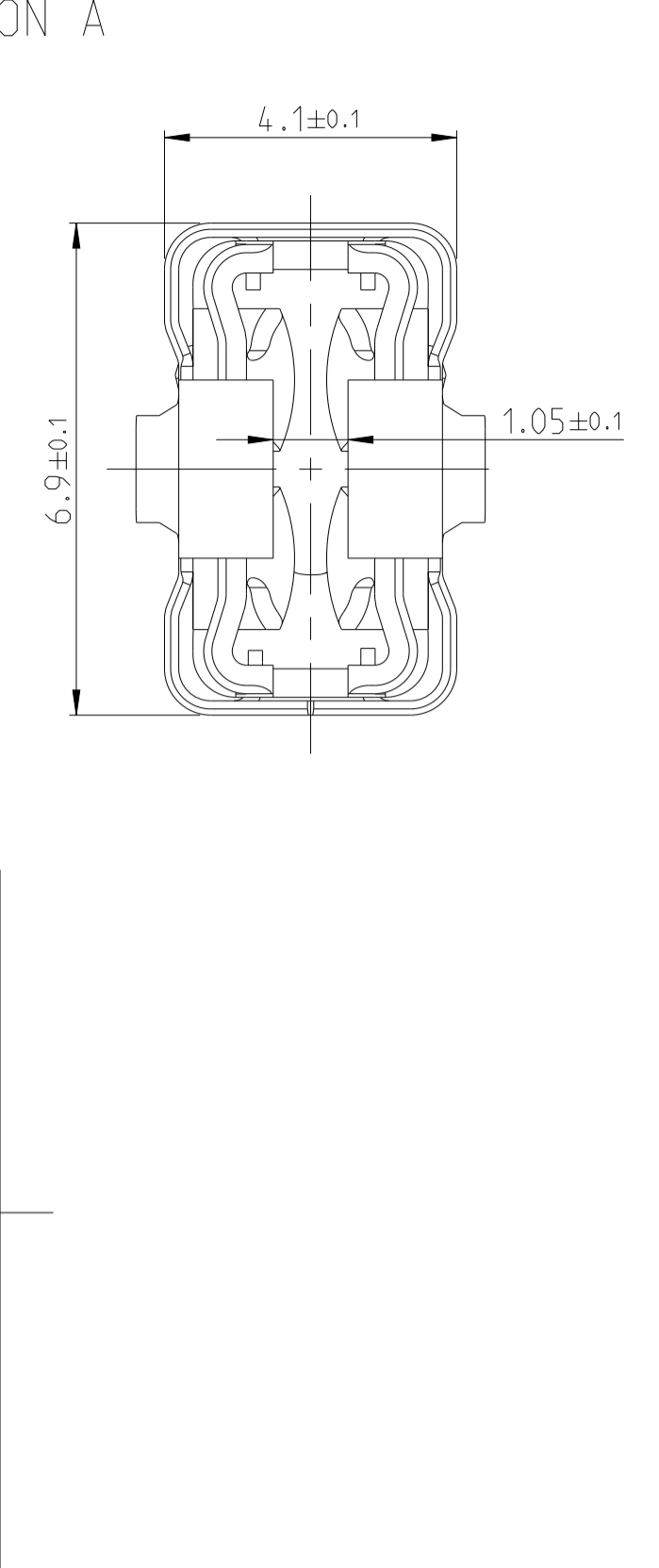
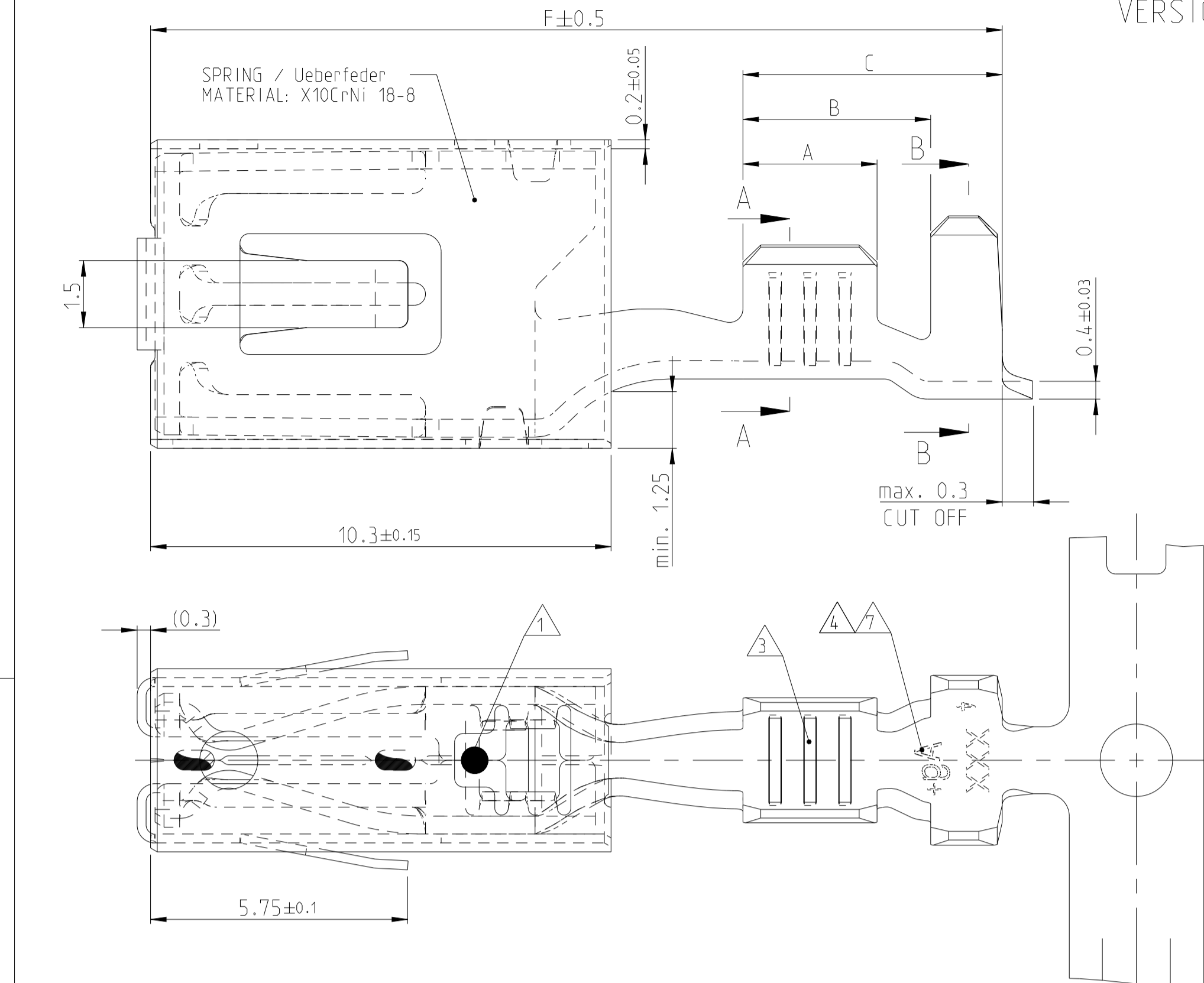
  

THIS DRAWING IS A CONTROLLED DOCUMENT.	DATE	BY	CHK	DESCRIPTION
THIS DRAWING IS A CONTROLLED DOCUMENT. OTHER REVISIONS ARE NOT VALID UNLESS SPECIFICALLY APPROVED BY THE ORIGINAL DRAWING ENGINEER. THE REVISED DRAWING MUST BE USED FOR ALL PRODUCTION PURPOSES.	10FEB2009	Gajanan	10FEB2009	TE Connectivity
	11FEB2009	Ed. Grandzow	11FEB2009	TE Connectivity

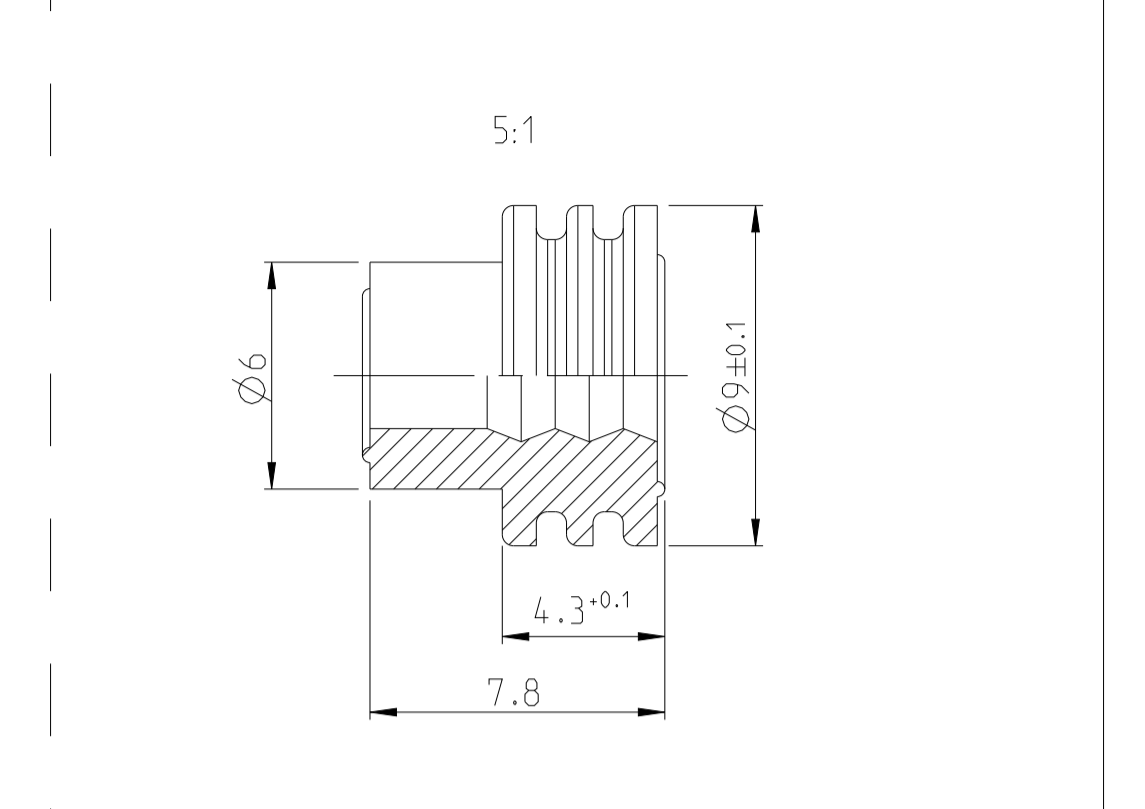
  

TE ORDER-NO.	REV.	NO. OF POS.	CODE	QUANTITY	ITEM NO	DESCRIPTION	MATERIAL	COLOUR	WEIGHT	SCALE	SHEET	OF	REV
4-1564542-1	J	2	D	1	1	1	1	1	19.72 g (±)	2:1	1	1	J4



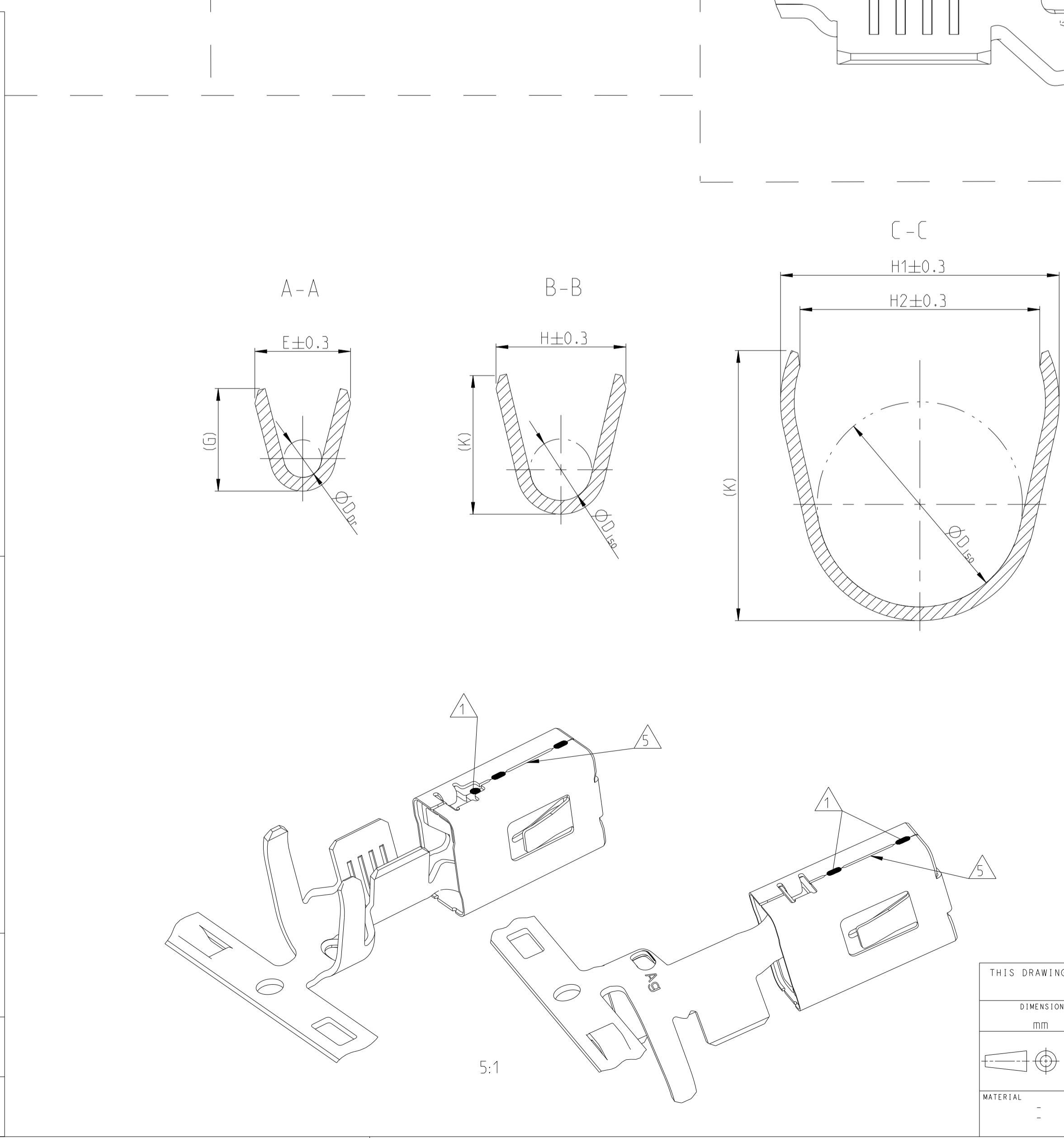


LOC	DIST	REVISIONS			
A1	-	REV	DATE	BY	APPV
A15		NEW VARIANT 5-1241400-1; 5-1241410-1 and 5-1241410-3	09APR2018	FRAN	BECK
A16		NEW PN 1-2333550-3; 1-2333551-3; 1-2333552-3 AT SHEET 2	03DEC2020	FRAN	BECK
A17		PCN-22-158848	22NOV2022	FRAN	KIEF
B		PCN-24-229575	11DEC2024	FRAN	KIEF

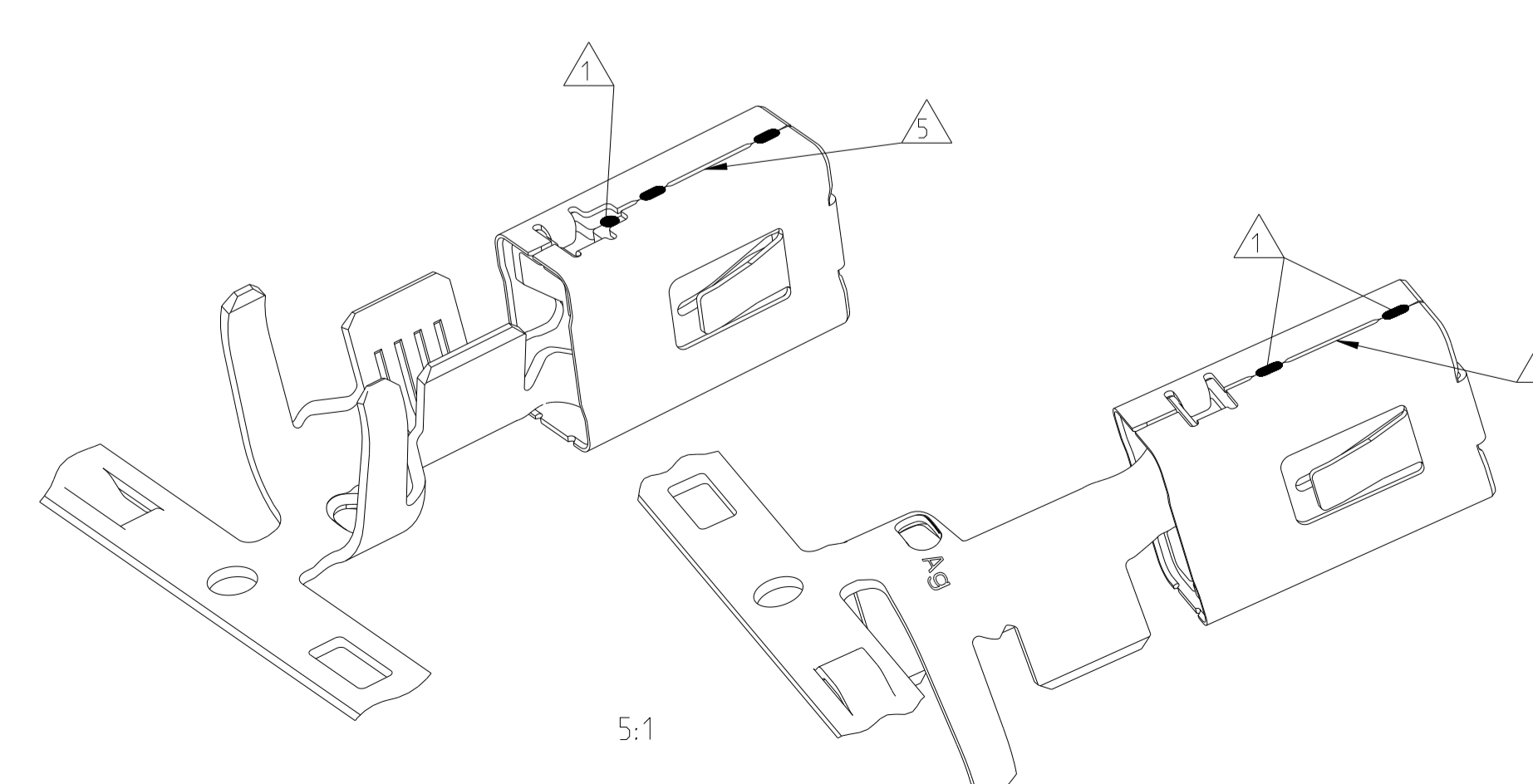


ORDER NO. Bestell-Nr.	INSULATION-Ø Isolations-Ø	COLOUR Farbe
2177018-1	1.2-2.0	YELLOW gelb
1394511-1	2.0-2.7	WHITE weiss
1823111-1	2.7-3.0	REDBROWN rotbraun
1394512-1	3.4-3.7	BLUE blau
1719043-1	4.0-4.5	GREEN gruen

ORDER NO. STRIP Bestell-Nr. Bandware	Rev.	WIRE RANGE Drahtgroessen Bereich (mm 2)	INSULATION-Ø Isolations-Ø (mm)	MATERIAL Werkstoff	SURFACE IN CONTACT AREA Oberflaeche im Kontaktbereich	CRIMP DIMENSION Crimpabmessungen (mm)				WIRE CRIMP Drahtcrimp	INSULATION CRIMP Isolations Crimp
						A	B	C	F		
1241418-4	A				TIN PLATED / SnAg verzinkt / SnAg						
2-1241418-3	A	4.0-6.0	3.4-4.3	CuNiSi	SILVER PLATED versilbert	4.5	6.9	8.7	20.95	E = 5.3 G = 5.6 D <sub>Dr</sub> = 2.9	H1= 8.15 H2= 7.0 K = 7.9 D <sub>Iso</sub> = 6.0
1-1241418-3	A				SILVER PLATED versilbert						
1241416-3	A				SILVER PLATED versilbert						
1241416-1	A	>2.5-4.0	3.4-4.5	CuNiSi	TIN PLATED verzinkt	4.0	5.9	7.7	19.95	E = 4.6 G = 4.8 D <sub>Dr</sub> = 2.4	H1= 8.15 H2= 7.0 K = 7.9 D <sub>Iso</sub> = 6.0
1241414-3	A				SILVER PLATED versilbert						
1241414-1	A	>1.0-2.5	2.2-3.7	CuNiSi	TIN PLATED verzinkt	3.5	5.9	7.7	19.95	E = 3.8 G = 4.0 D <sub>Dr</sub> = 1.7	H1= 8.15 H2= 7.0 K = 7.9 D <sub>Iso</sub> = 5.7
1241412-3	A				SILVER PLATED versilbert						
1241412-1	A	0.5-1.0	1.4-2.7	CuNiSi	TIN PLATED verzinkt	3.0	5.4	7.2	19.95	E = 2.8 G = 3.0 D <sub>Dr</sub> = 1.1	H1= 7.8 H2= 6.7 K = 7.5 D <sub>Iso</sub> = 5.5
5-1241410-3	A				SILVER PLATED versilbert						
1241410-3	A	0.35-0.5	1.2-2.3	CuNiSi	SILVER PLATED versilbert	2.5	4.9	6.7	19.95	E = 2.2 G = 2.2 D <sub>Dr</sub> = 0.8	H1= 7.7 H2= 6.6 K = 7.5 D <sub>Iso</sub> = 5.5
5-1241410-1	A				TIN PLATED verzinkt						
1241410-1	A				TIN PLATED verzinkt						
2-1241408-3	A				SILVER PLATED versilbert						
1-1241408-3	A	4.0-6.0	3.4-4.3	CuNiSi	SILVER PLATED versilbert	4.5	6.0	7.8	19.95	E = 5.3 G = 5.6 D <sub>Dr</sub> = 2.9	H = 6.7 K = 7.0 D <sub>Iso</sub> = 3.9
1241408-1	A				TIN PLATED verzinkt						
1241406-3	A				SILVER PLATED versilbert						
1241406-1	A	>2.5-4.0	3.4-4.5	CuNiSi	TIN PLATED verzinkt	4.0	5.2	6.8	19.05	E = 4.6 G = 4.8 D <sub>Dr</sub> = 2.4	H = 6.4 K = 6.7 D <sub>Iso</sub> = 4.0
1241404-3	A				SILVER PLATED versilbert						
1241404-1	A	>1.0-2.5	2.2-3.0	CuNiSi	TIN PLATED verzinkt	3.5	4.7	6.3	19.05	E = 3.8 G = 4.0 D <sub>Dr</sub> = 1.7	H = 4.7 K = 4.9 D <sub>Iso</sub> = 2.6
1241402-3	A				SILVER PLATED versilbert						
1241402-1	A	0.5-1.0	1.4-2.1	CuNiSi	TIN PLATED verzinkt	3.0	4.2	5.8	19.05	E = 2.8 G = 3.0 D <sub>Dr</sub> = 1.1	H = 3.8 K = 4.1 D <sub>Iso</sub> = 1.8
5-1241400-1	A				TIN PLATED verzinkt						
1241400-1	A	0.2-0.5	1.1-1.6	CuNiSi	TIN PLATED verzinkt	2.5	3.8	6.6	19.05	E = 2.2 G = 2.2 D <sub>Dr</sub> = 0.8	H = 3.1 K = 3.1 D <sub>Iso</sub> = 1.4

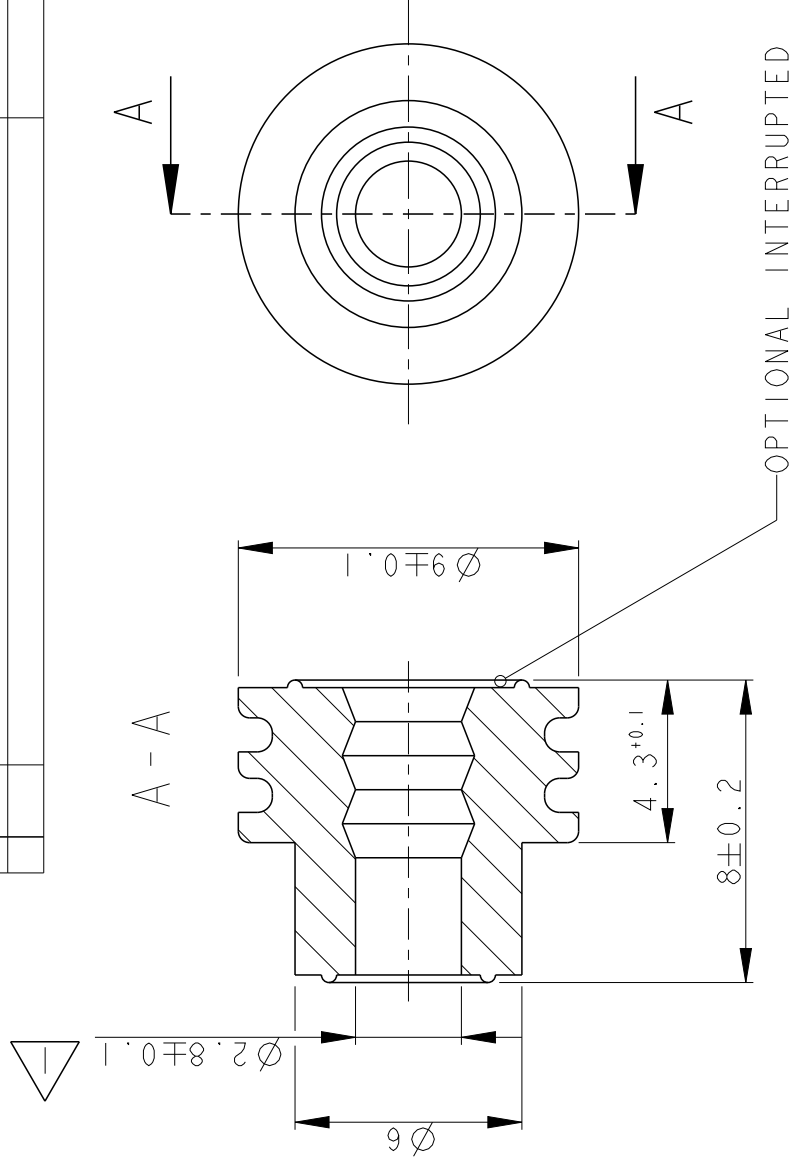


- NOTES  
Bemerkungen
- LASER WELDED  
Lasergeschweisht
  - SINGLE WIRE SEAL TO BE SELECTED ACCORDING TO INSULATION-Ø  
Auswahl der Einzeldichtung entsprechend dem Isolations-Ø
  - DIFFERENT FORM AND NUMBER OF THE SERRATIONS POSSIBLE  
Unterschiedliche Ausfuehrung und Anzahl der Ritzen moeglich
  - SILVER PLATED VERSIONS ARE MARKED WITH "Ag"  
Versilberte Versionen sind mit "Ag" gekennzeichnet
  - DIFFERENT ASSEMBLY CAUSED BY PRODUCTION OF THE SPRING ON THE BODY.  
SPOTWELDS CAN BE ABOVE OR DOWN.  
Fertigungsbedingte unterschiedliche Montage der Ueberfeder auf dem Body moeglich.  
Der Stoss kann sich oben oder unten befinden.
  - USED WITH TAB  $0.8 \pm 0.03 \text{mm} \times 4.8 \dots 6.3 \pm 0.1 \text{mm}$   
Verwendet mit Flachstecker  $0.8 \pm 0.03 \text{mm} \times 4.8 \dots 6.3 \pm 0.1 \text{mm}$
  - "Ag" MARKING ON SILVER PLATED VERSIONS FOR INCREASED LIMIT TEMPERATURE  
"Ag" Markierung auf versilberten Versionen fuer erhoehte Grenztemperatur
  - 1241400-1 nicht fuer Neuanwendungen, wird ersetzt durch 5-1241400-1  
1241410-1 nicht fuer Neuanwendungen, wird ersetzt durch 5-1241410-1  
1241410-3 nicht fuer Neuanwendungen, wird ersetzt durch 5-1241410-3  
1241400-1 SUPERSEDED BY PN 5-1241400-1  
1241410-1 SUPERSEDED BY PN 5-1241410-1  
1241410-3 SUPERSEDED BY PN 5-1241410-3



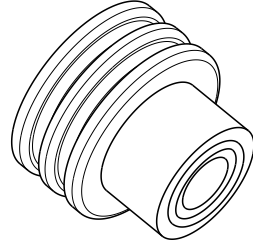
THIS DRAWING IS A CONTROLLED DOCUMENT.		OWN R. Meier	03DEC2001	NAME AMP MCP6.3/4.8K FLATCONTACT AMP MCP6.3/4.8K Flachkontakt PRODUCT GROUP DRAWING
DIMENSIONS: mm		CHK R. Schaefer	03DEC2001	
TOLERANCES UNLESS OTHERWISE SPECIFIED:		APPV M. Bleicher	28OCT2011	SIZE 116-18388
MATERIAL		FINISH	WEIGHT	RESTRICTED TO
Customer Drawing		SCALE 5:1	SHEET 1 of 2	REV B

P		LTR		DESCRIPTION		DATE		DWN		APVD	
	A3		REVISED (ECR-15-003702)		09MAR2015		M.G.		M.G.		M.G.



DEDICATED FOR INSULATION DIA:  
 3.4-3.7mm (FLR CABLE - WIRE SIZE 4.0mm<sup>2</sup>)  
 3.4-3.74mm (ALUMINIUM WIRE ONLY - WIRE SIZE 4mm<sup>2</sup>)

SEALING FOR STANDARD-POWER-TIMER, AMP MCP6.3/4.8K  
 AND 5.8mm TAB



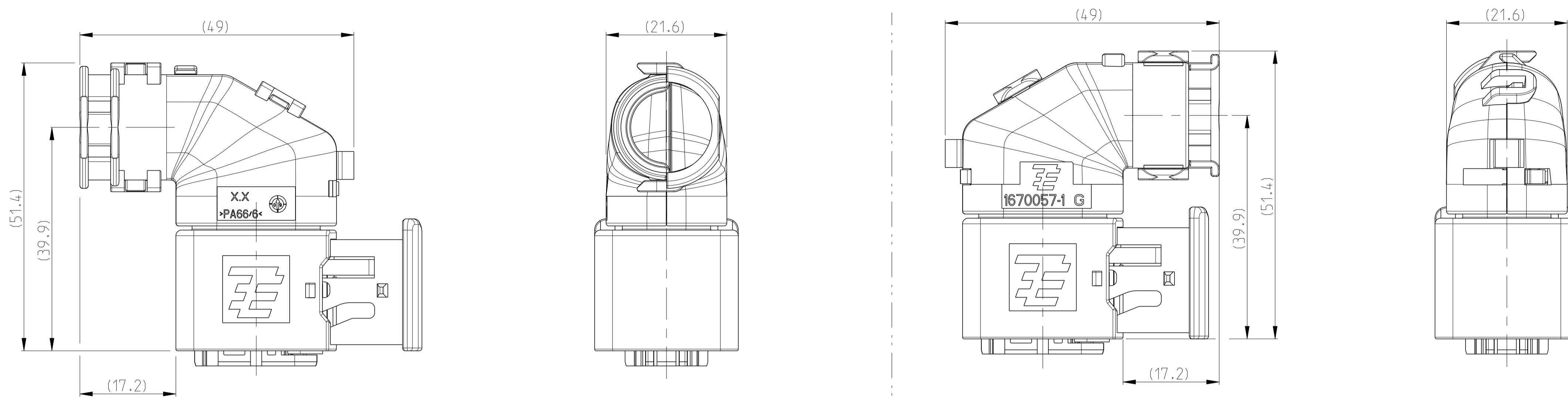
BLUE	SILICONE 50° SHORE A INHERENTLY LUBRICATED	1394512-1
COLOR	MATERIAL	PART Nr.

DIMENSIONS:		MATERIAL		FINISH	
mm		190CT2000		SEE TABLE	
TOLERANCES UNLESS OTHERWISE SPECIFIED:		190CT2000		SEE TABLE	
0 PLC	±0.2	PRODUCT SPEC		NAME	
1 PLC	±0.2	-		SINGLE WIRE SEAL	
2 PLC	±-	APPLICATION SPEC		SIZE	
3 PLC	±-	-		A4	
4 PLC	±-	WEIGHT		CAGE CODE	
ANGLES	±1°	0.25 gr		DRAWING NO	
		Customer Drawing		G=1394512	
		SCALE		RESTRICTED TO	
		5:1		-	
		SHEET		REV	
		1 OF 1		A3	



TE Connectivity

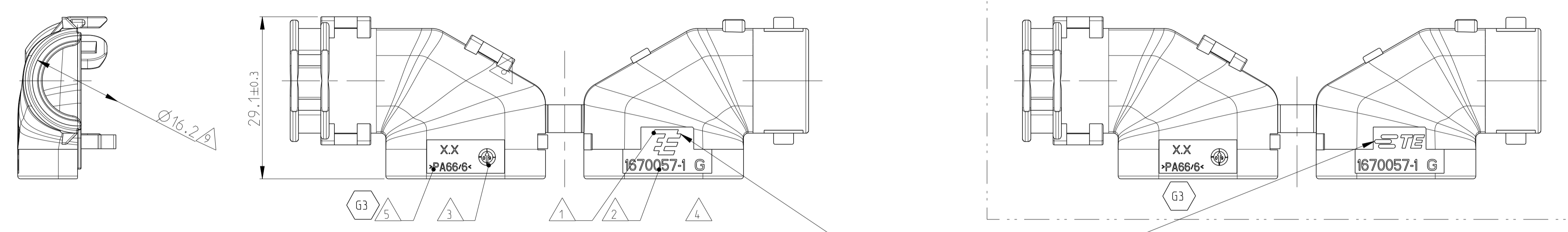
11 MOUNTED COVER OPTIONS  
 Befestigungsmoeglichkeiten der Kappe



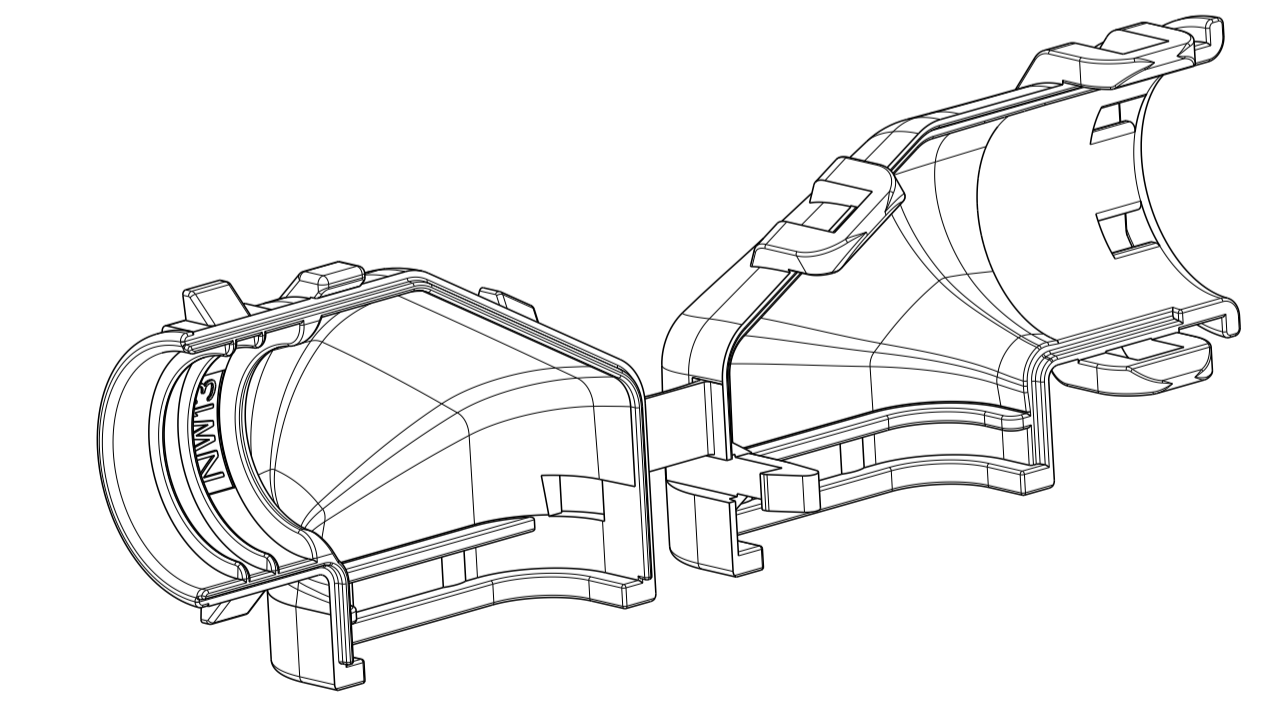
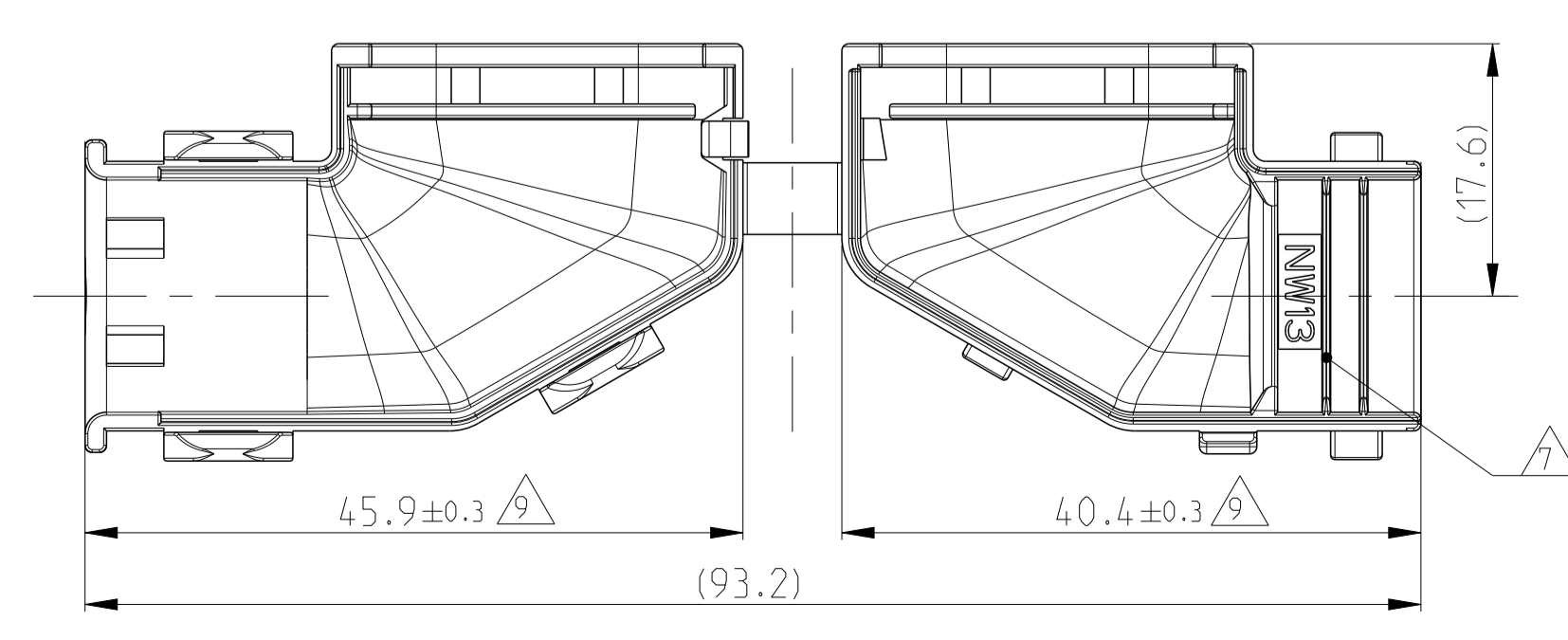
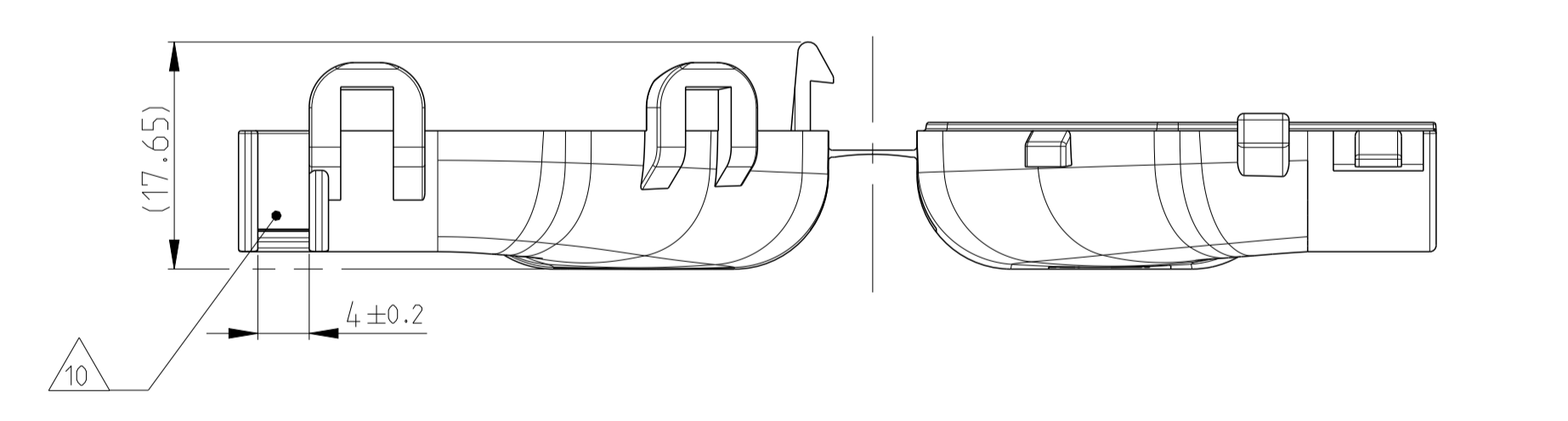
REVISIONS					
P	LTN	DESCRIPTION	DATE	DMN	APVD
G		ECR-09-012157 (PCN E-09-005080 PART CHANG.)	04MAR2009	SJ	CE
G1		DETAILS SEE PCN E-10-002668	04FEB2010	SJ	JG
G2		New view added with TE Logo depending on mold	28NOV2017	MAH.	GILC
G3		DETAILS SEE PCN E-18-018520	27NOV2018	MAH.	GILC

NOTES  
 Bemerkungen

- 1 TE LOGO  
TE Logo
- 2 TE ORDER-NO.  
TE Bestell-Nr.
- 3 PRODUCTION DATE  
Produktionsdatum
- 4 LETTER-INSERT FOR THE REVISION STATUS OF THE MOLD  
Schriftsatz fuer Aenderungszustand des Werkzeuges  
ACTUAL STATUS: SEE TABLE  
Aktueller Stand: siehe Tabelle
- 5 MATERIAL MARKING ACCORDING TO VDA 260  
Werkstoffkennzeichnung nach VDA 260
- 6 BULK PACKAGING IN CORRUGATED BOX  
Schuetztgut im Versandkarton
- 7 CABLE EXIT DESIGNED FOR CORRUGATED TUBE NW 13  
Kabelabgang ausgelegt fuer Wellrohr NW 13
- 8 MALFUNCTION CAUSED BY LAQUER IS NOT COVERED  
BY TE WARRANTY  
Funktionsbeeintraechtigung durch Lackieren liegt nicht  
im Einfluss und Gewährleistungsumfang von TE
- 9 WARPAGE UP TO -1.0mm FROM NOM. DIMENSION PERMITTED  
Verzug zulaessig bis -1.0mm vom Nennmass
- 10 MAX. CABLE TIE WIDTH: 3.8mm  
max. Kabelbinderbreite: 3.8mm
- 11 SUITABLE FOR TAB AND RECEPTACLE HOUSING GROUP C  
SEE PRODUCT GROUP DRAWING 1563709  
Passend fuer Flachstecker- und Buchsengehaeuse der Gruppe C  
siehe Produktgruppenzeichnung 1563709



TE LOGO RELATED TO MOLDING TOOL  
 TE Logo abhaengig von Spritzgusswerkzeug



0-1670057-1	G	COVER 90° Kappe 90°	1
TE ORDER-NO. TE Bestell-Nr.	REV.	DESCRIPTION Beschreibung	ITEM

THIS DRAWING IS A CONTROLLED DOCUMENT.

DIMENSIONS: mm	TOLERANCES UNLESS OTHERWISE SPECIFIED:	DMN D.Bischoff 26OCT2006	CHG J.Grandzow 31OCT2006	APVD F.Überwein 02NOV2006	NAME COVER 90 DEG. Kappe 90 Grad HDSCS - GROUP C
0 PLC ±0.1	ISO 80/5	1 PLC ±0.1	ISO 80/5	2 PLC ±0.1	ISO 80/5
3 PLC ±0.1	DIN 15001-100	4 PLC ±0.1	DIN 15001-100	ANGLES ±0.2°	116-18756
MATERIAL PA66/6 (V-0)	FINISH BLACK schwarz	WEIGHT 5.2g	SIZE A1	CAGE CODE 00779	DRAWING NO C=1670057
CUSTOMER DRAWING				SCALE 5:1	SHEET 1 OF 1

RESTRICTED TO REV. G3