

M1-1564544-1K

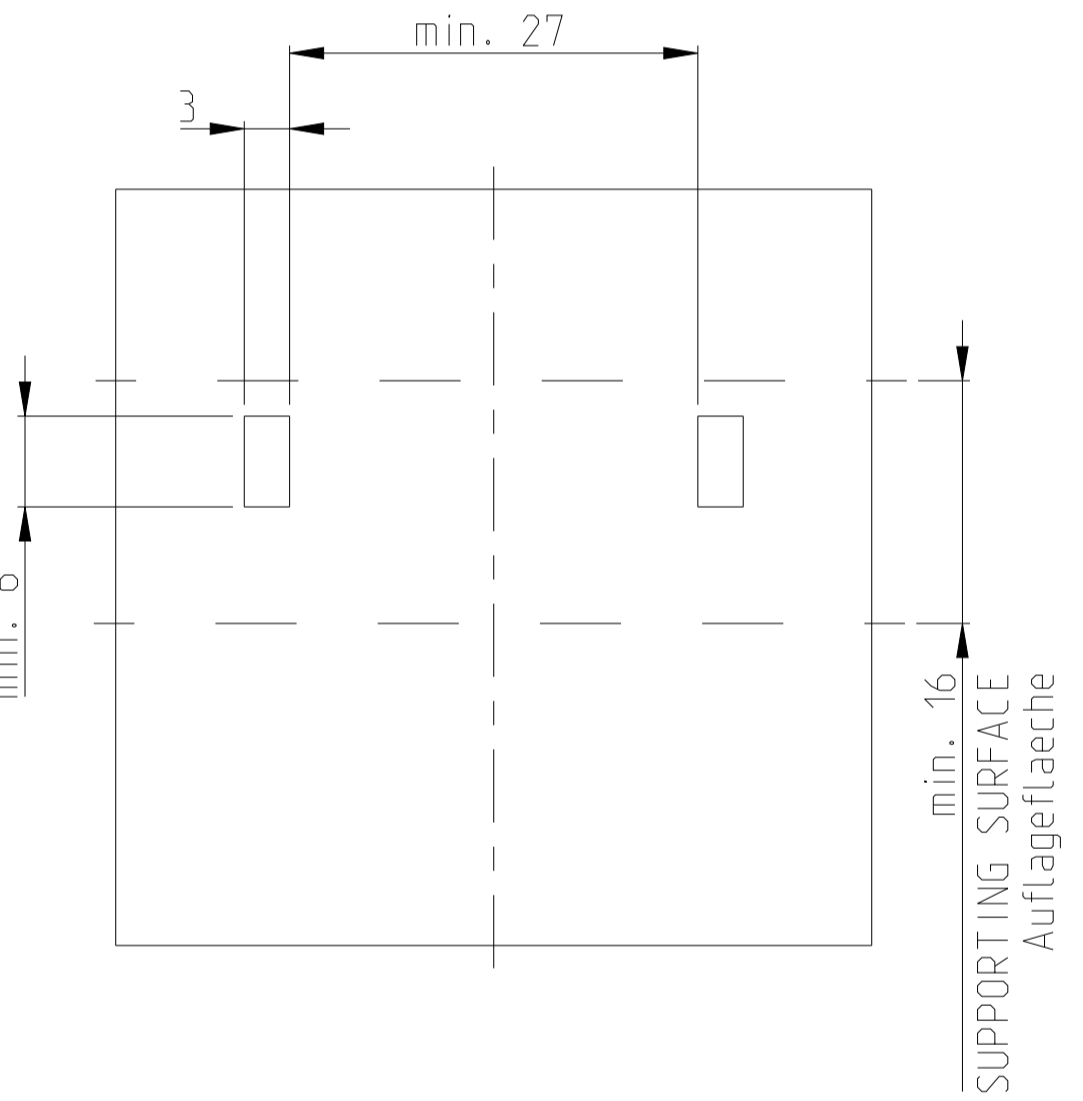
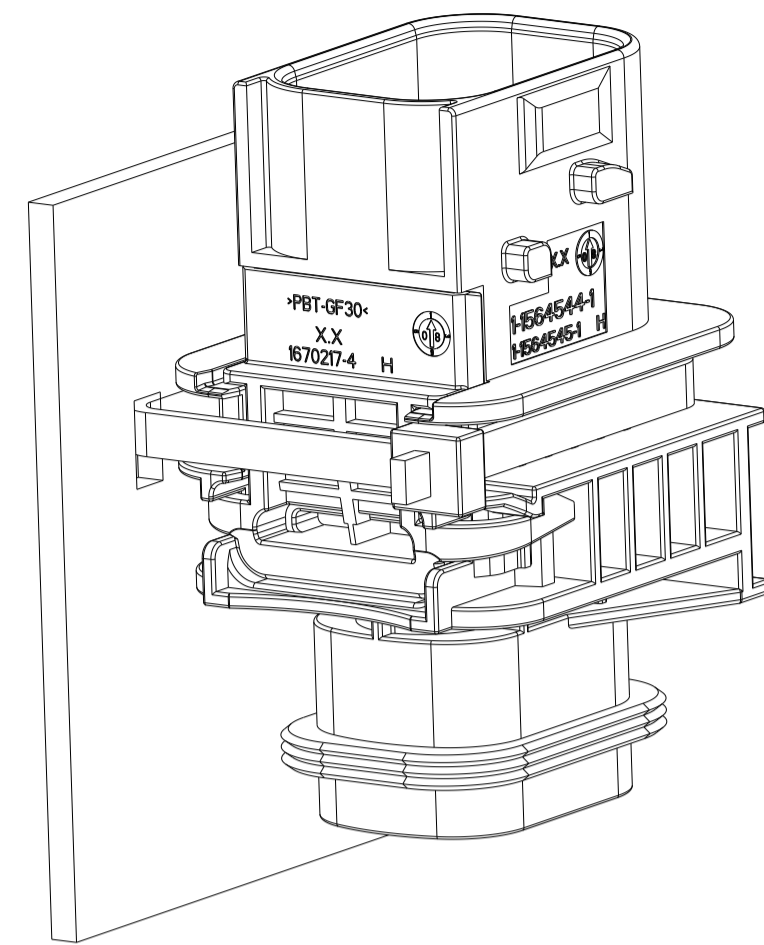


MINIKIT

Proseguire nella pagina successiva per visualizzare la scheda tecnica dei componenti

Revisione	Prodotto
REV.00 14/04/2026	OEM

PREFERRED MOUNTING SITUATION FOR CABLE TIE
 Bevorzugte Montagestellung fuer Kabelbinder



CODING "A"
Kodierung

PN: 1-1564544-1

CODING "B"
Kodierung

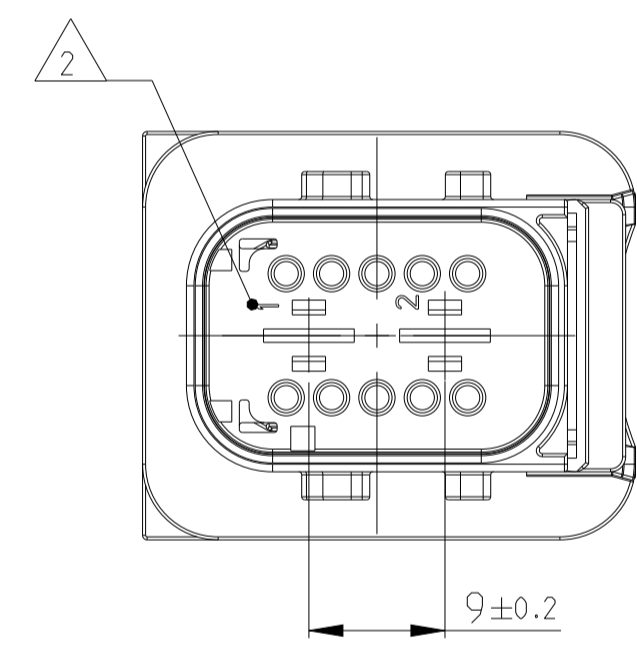
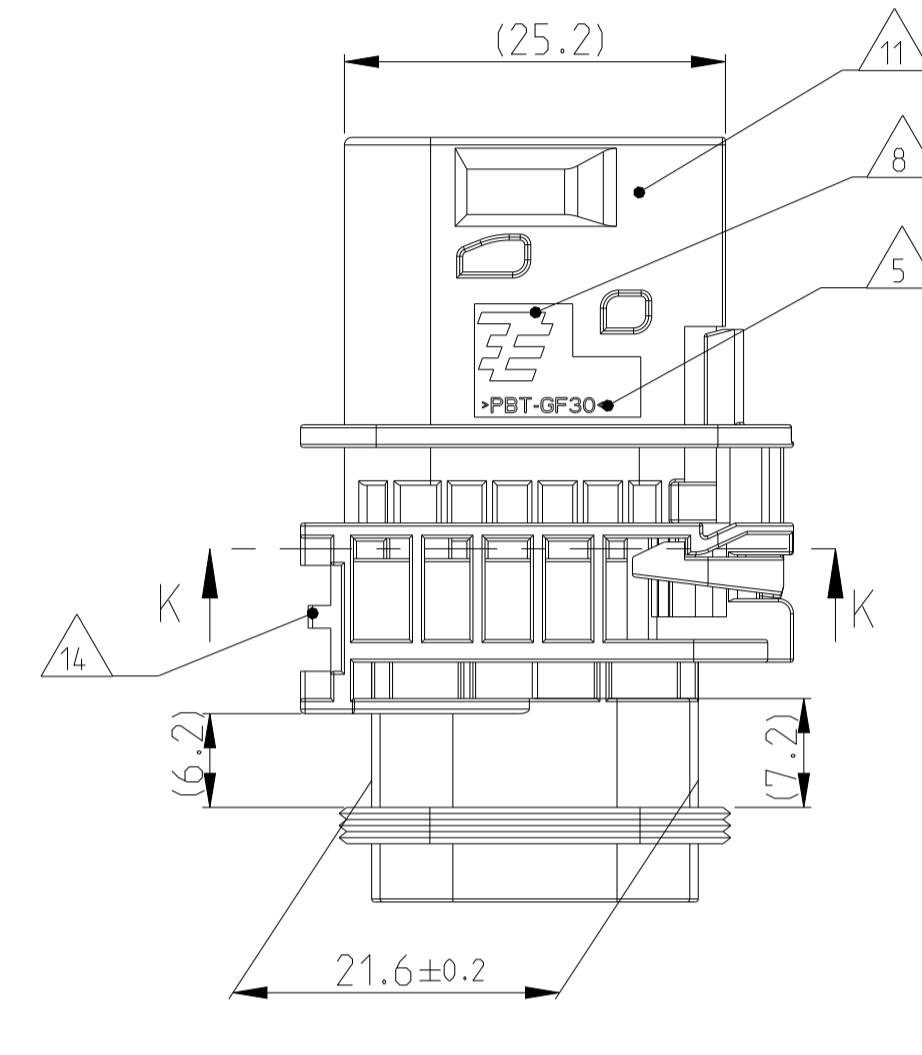
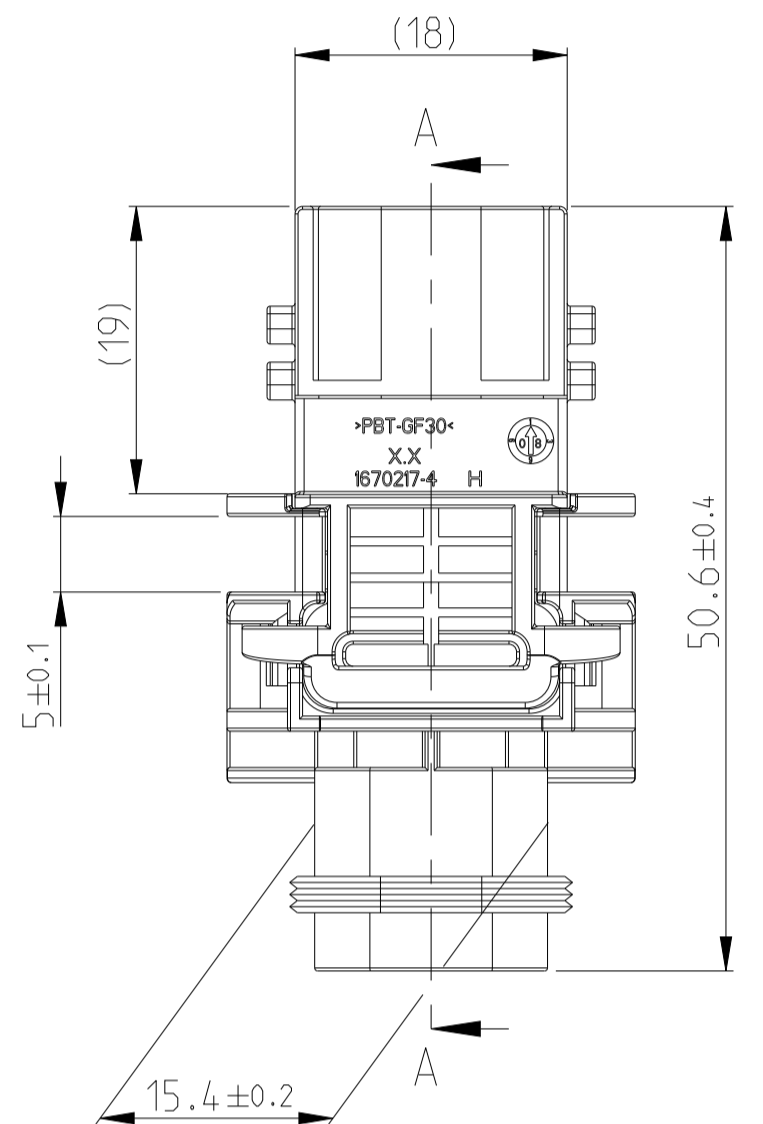
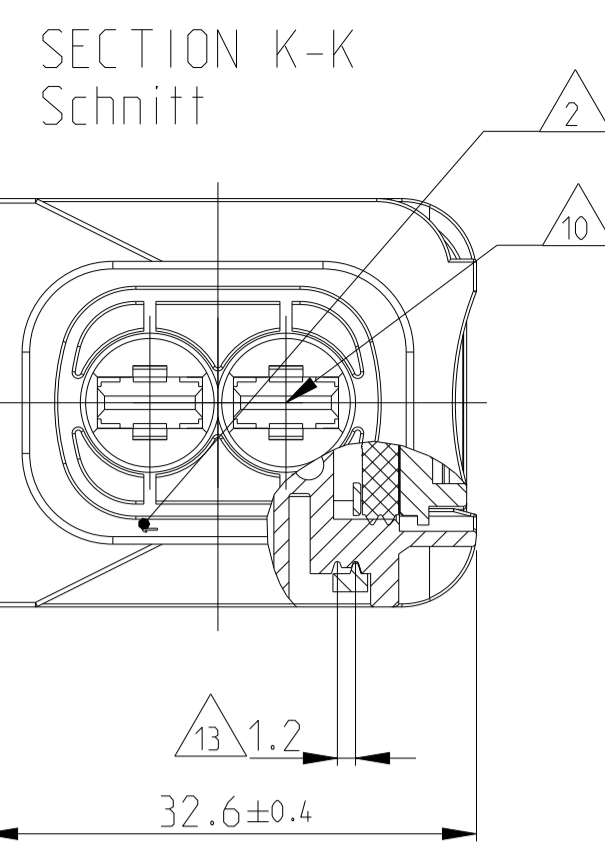
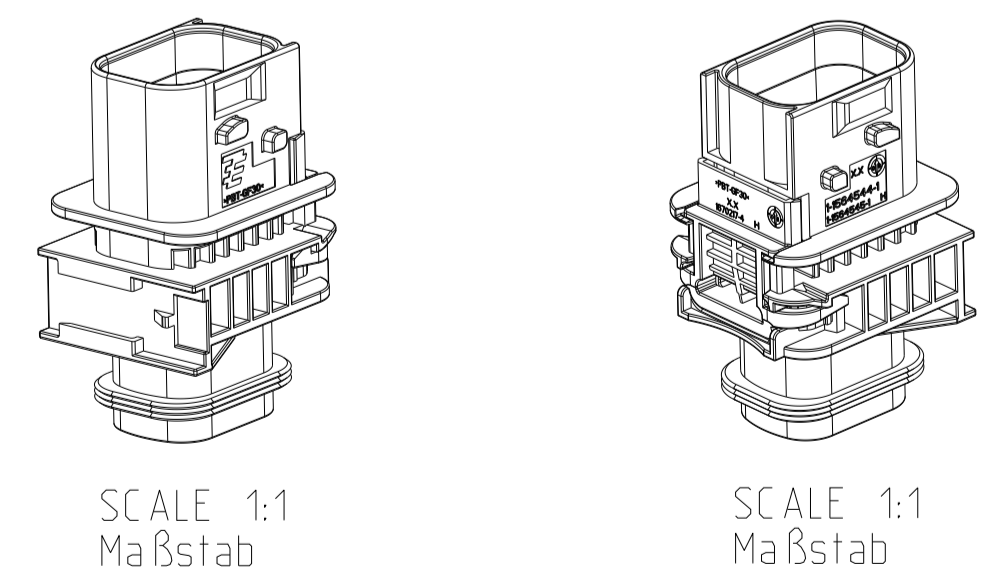
PN: 2-1564544-1

CODING "C"
Kodierung

PN: 3-1564544-1

CODING "D"
Kodierung

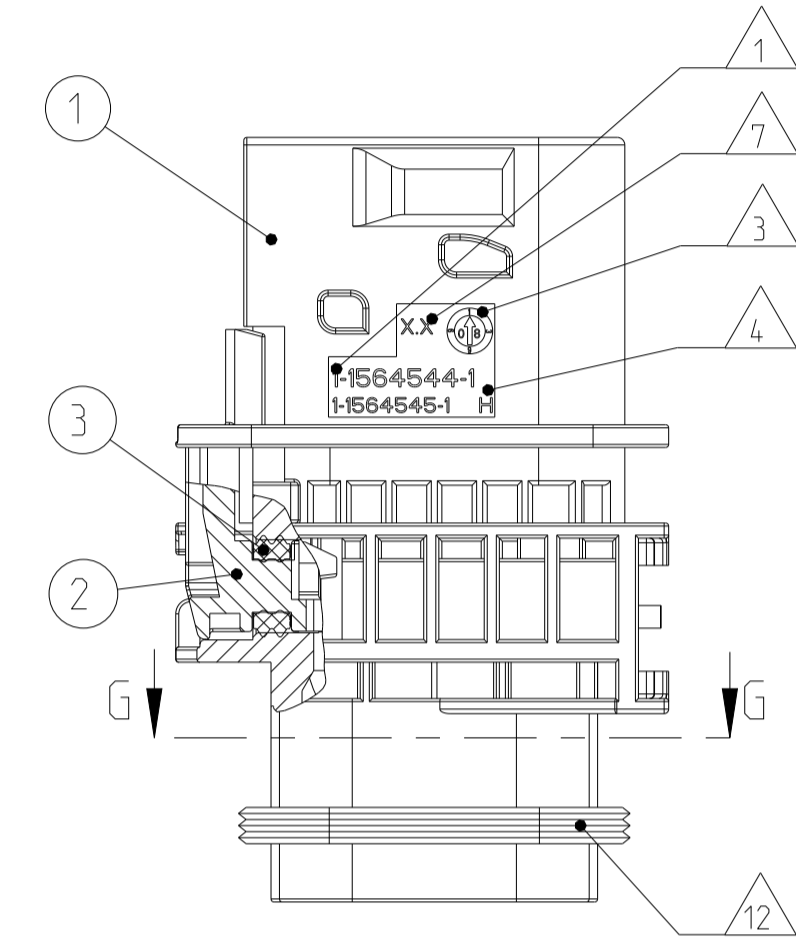
PN: 4-1564544-1



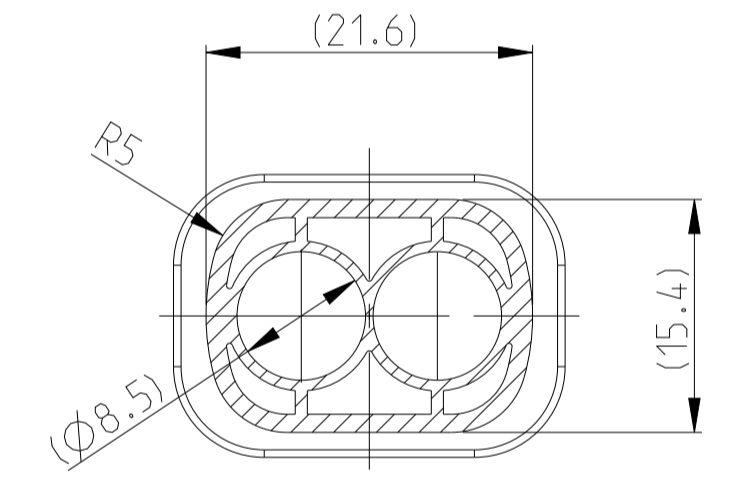
1-1564544-1 AS SHOWN
 1-1564544-1 wie gezeigt

DELIVERY CONDITION:
 SECONDARY LOCKING DEVICE
 IN PRE-LOCKED POSITION
 Lieferzustand:
 2. Kontaktsicherung in Vorraststellung

SECTION A-A
Schnitt



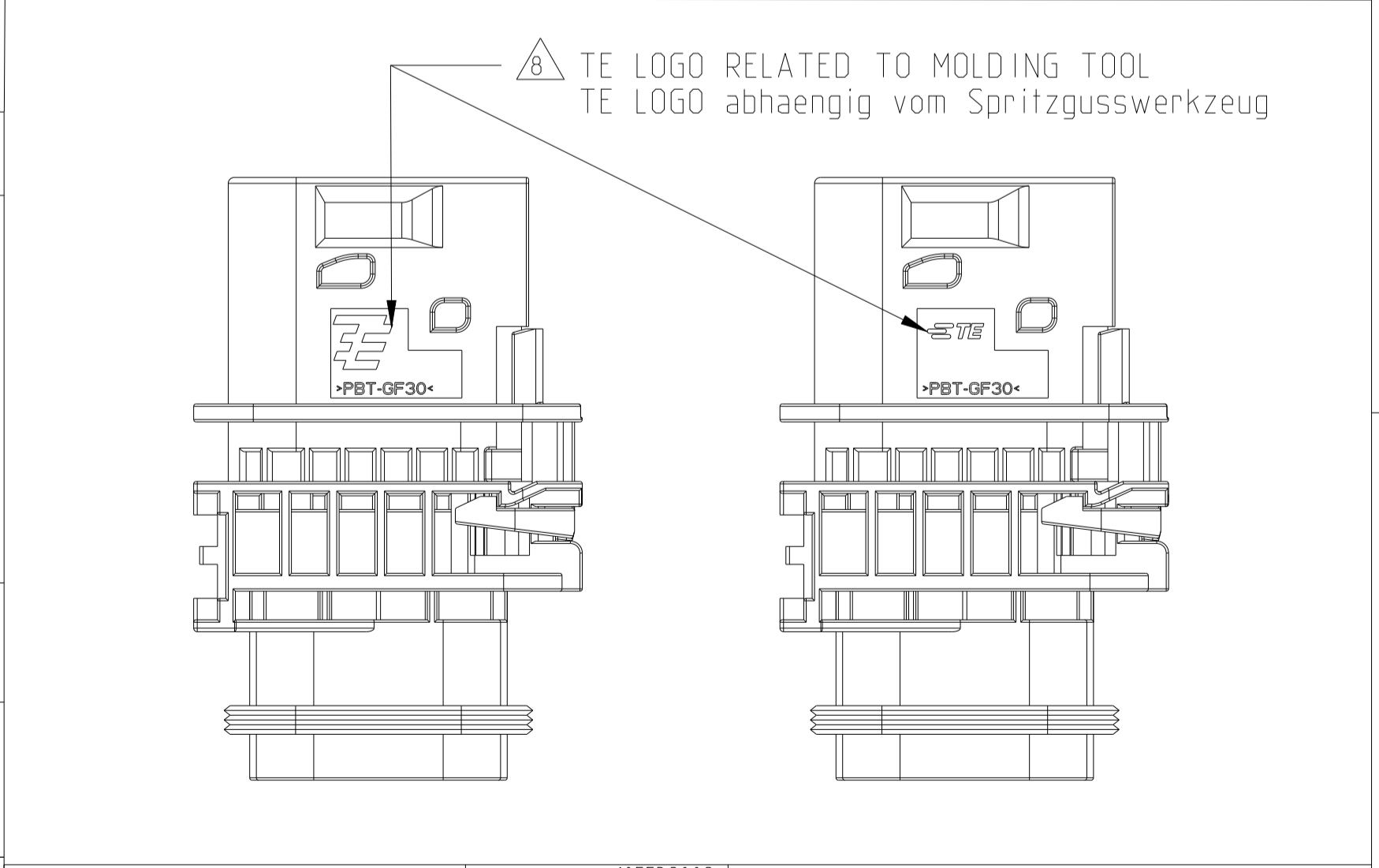
SECTION G-G
Schnitt



LOC	DIST	REV	DATE	BY	APPV
A1	-	H	10FEB2009	J.Grajanan	
		H1	11FEB2009	J.Grajanan	
		H2	25MAY2011	E.Gerwein	
		H3	24AUG2021	DRK	AW
			16MAR2022	NS	AW

- NOTES
Bemerkungen
- 1 TE ORDER-NO.
TE Bestell-Nr.
 - 2 CAVITY NUMBERING
Kammerbezeichnung
 - 3 PRODUCTION DATE
Produktionsdatum
 - 4 LETTER-INSERT FOR THE REVISION STATUS OF THE MOULD
Schriftsatz fuer Aenderungszustand des Werkzeuges
 - 5 MATERIAL MARKING ACCORDING TO VDA 260
Werkstoffkennzeichnung nach VDA 260
 - 6 BULK PACKAGING IN CORRUGATED BOX
Schuettgut im Versandkarton
 - 7 MOULD CAVITY MARKING
Nestmarkierung
 - 8 TE LOGO
TE Logo
 - 9 SUITABLE COUNTERPART SEE DRAWING: 1564542
passendes Gegenstueck siehe Zeichnung: 1564542
 - 10 CAVITIES MATED WITH TAB 5.8 x 0.8 MM (SW)
SEE PRODUCT GROUP DRAWING
TE NO: 1241895
MAX. WIRE SIZE: 6.0mm² FLR
ATTENTION:
SUITABLE WIRE SEALS FOR CAVITY DIAMETER 8.5MM
MUST BE USED (SAME AS FOR AMP MCP 6.3 CONTACTS
Kontaktkammer passend fuer Flachstecker 5.8 x 0.8 mm (EDS)
siehe Produktgruppenzeichnung
TE Nr: 1241895
max. Drahtgroessenbereich: 6.0mm² FLR
Achtung:
Entsprechende Einzeldichtungen fuer Kammerdurchmesser 8.5mm
muessen verwendet werden (die gleichen wie fuer AMP MCP 6.3 Kontakte
 - 11 INTERFACE ACC. DRAWING: 114-18740-1
Kragenschluss nach Zeichnung: 114-18740-1
 - 12 MATED WITH COVER SEE TE PN 1670057. 1670364
Passend zu Kappe siehe TE PN 1670057. 1670364
 - 13 SLIDING DISTANCE OF SECONDARY LOCKING
Verschiebeweg der zweiten Kontaktsicherung
 - 14 INTERFACE FOR FIXING PART
RAYMOND ODER-NO.: 017530. 018162
Schnittstelle fuer Befestigungsteil
Raymond Bestell-Nr.: 017530. 018162
 - 15 MALFUNCTION CAUSED BY LAQUER IS NOT
COVERED BY TE WARRANTY
Funktionsbeeintraechtigung durch Lackieren. Liegt nicht
im Einfluss und Gewährleistungsumfang von TE

ITEM NO	DESCRIPTION	COLOUR	MATERIAL
1	2POS. TAB HOUSING, CODE "1" 2pos. Flachsteckergehäuse, Kod. "1"	BLACK schwarz	PBT-GF30 / V-0
1	2POS. TAB HOUSING, CODE "B" 2pos. Flachsteckergehäuse, Kod. "B"	GREY grau	PBT-GF30 / V-0
1	2POS. TAB HOUSING, CODE "C" 2pos. Flachsteckergehäuse, Kod. "C"	GREEN grün	PBT-GF30 / V-0
1	2POS. TAB HOUSING, CODE "D" 2pos. Flachsteckergehäuse, Kod. "D"	BLUE blau	PBT-GF30 / V-0
2	SECONDARY LOCKING DEVICE zweite Kontaktsicherung	YELLOW gelb	PBT-GF30 / V-0
3	SEAL FOR SECONDARY LOCKING Dichtung fuer zweite Kontaktsicherung	WHITE weiss	MVD



TE ORDER-NO.	REV.	NO. OF POS.	CODE	QUANTITY	ITEM
TE Bestell-Nr.		Polzahl	Kodierung	Stueck	NO ASSY
4-1564544-1	H	2	D	-	4
3-1564544-1	H	2	C	-	3
2-1564544-1	H	2	B	-	2
1-1564544-1	H	2	A	1	1

THIS DRAWING IS A CONTROLLED DOCUMENT.
 DIESES ZEICHNUNGSDOKUMENT IST EIN DURCH TE KONTROLLIERTES DOKUMENT.
 ANFORDERUNG AN DEN VERKEHR: KEIN VERKEHR MIT DIESER ZEICHNUNG.
 TECHNISCHE ZEICHNUNG: KEIN VERKEHR MIT DIESER ZEICHNUNG.
 TECHNISCHE ZEICHNUNG: KEIN VERKEHR MIT DIESER ZEICHNUNG.

TE CONNECTIVITY

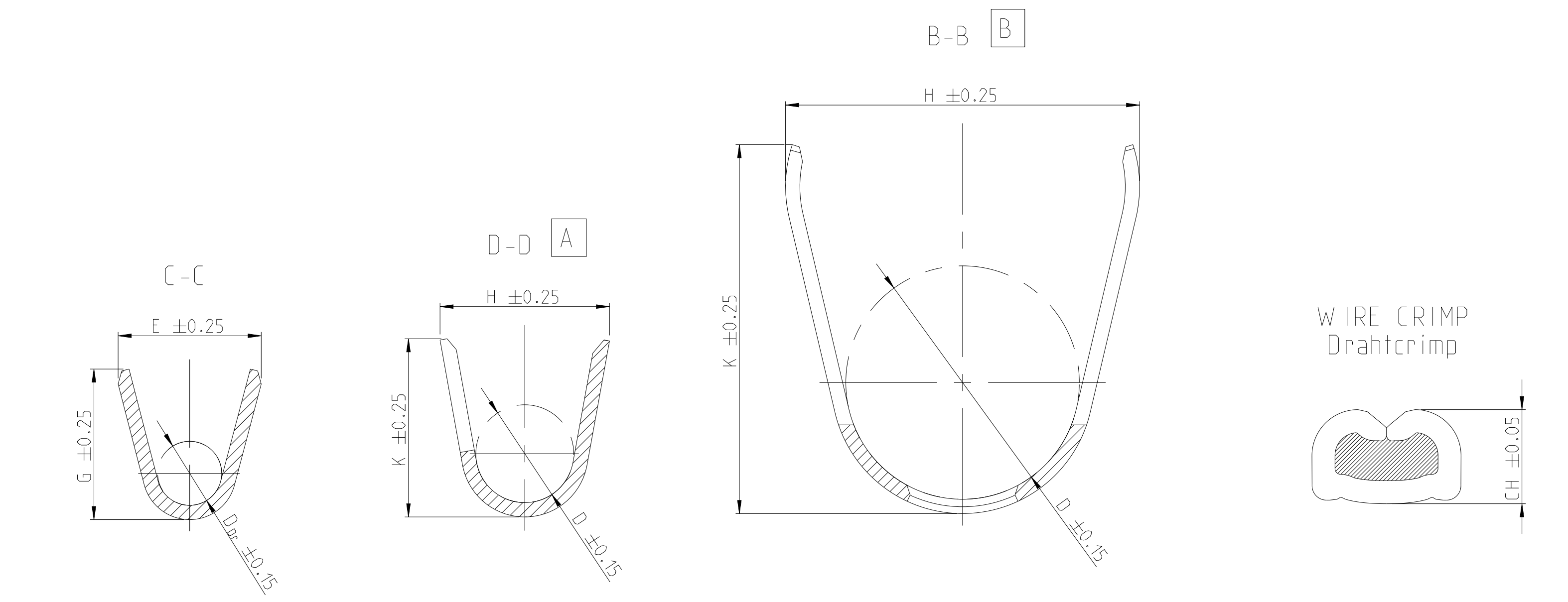
NAME: 2POS. TAB 5.8x0.8 TAB HSG. ASSY
 HEAVY DUTY SEALED CONNECTOR SERIES - GROUP C

SIZE: A1

WEIGHT: 18.95g

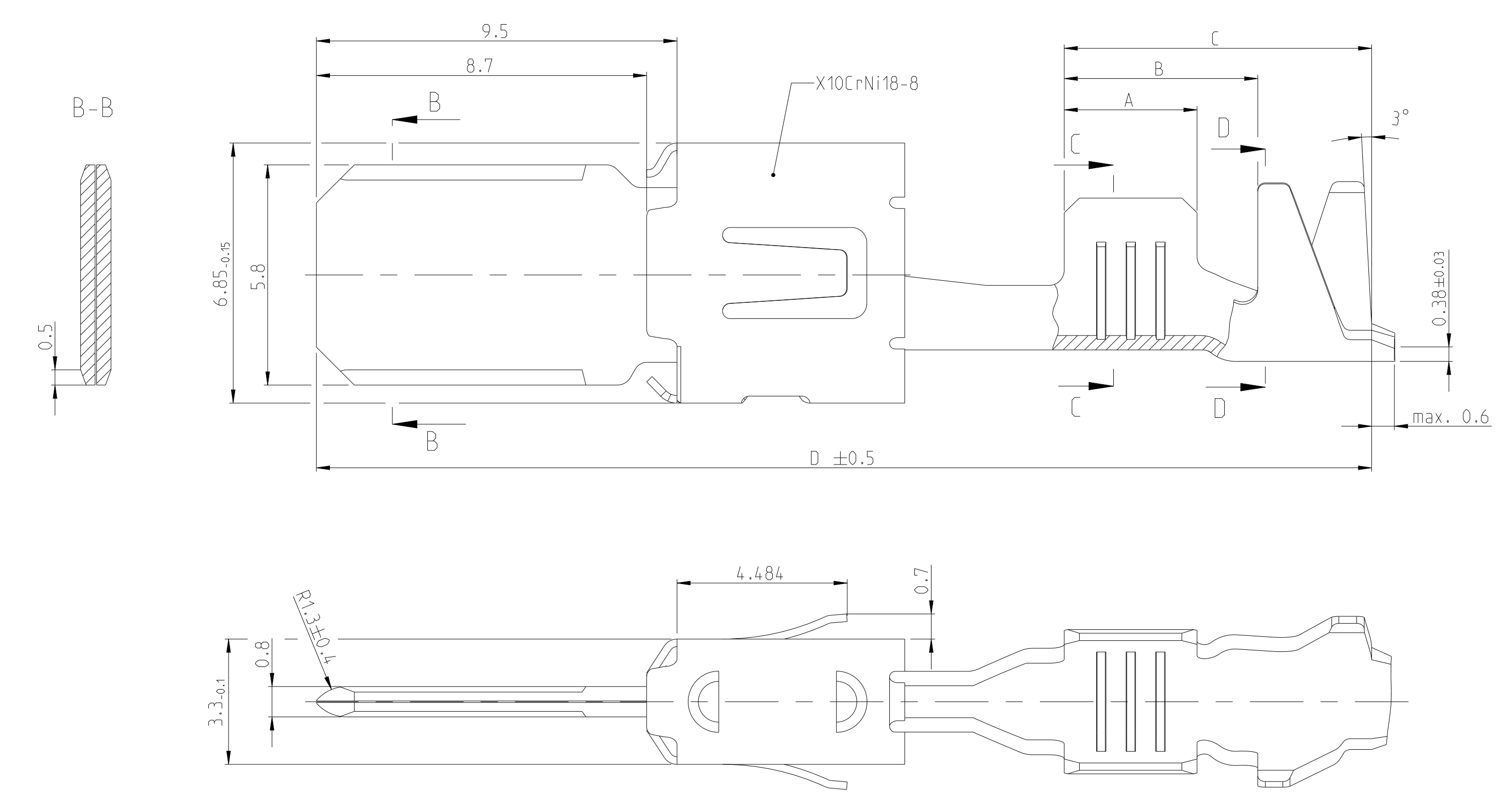
CUSTOMER DRAWING

NOTES
 Bemerkungen
 CONTACT AREA PRE SILVER MIN. 3µm
 OTHER AREA PRE SILVER MIN. 1µm
 SPRING BLANK
 Kontaktzone vorversilbert min. 3µm
 uebriger Bereich vorversilbert min. 1µm
 Ueberfederer blank
 PRE TIN MIN. 1µm
 SPRING BLANK
 Vorverzinkt min. 1µm
 Ueberfederer blank
 OBSOLETE
 Veraltet

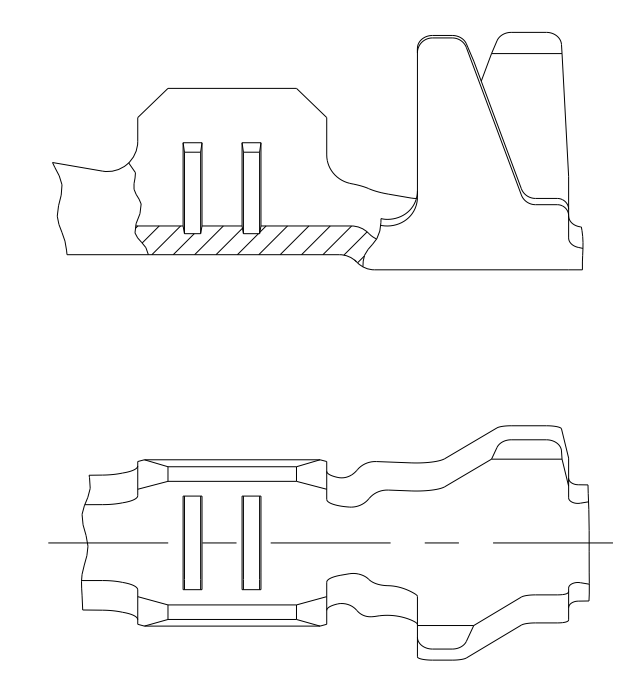


FLR-/FLK-WIRE
 FLR-/FLK-Leitung

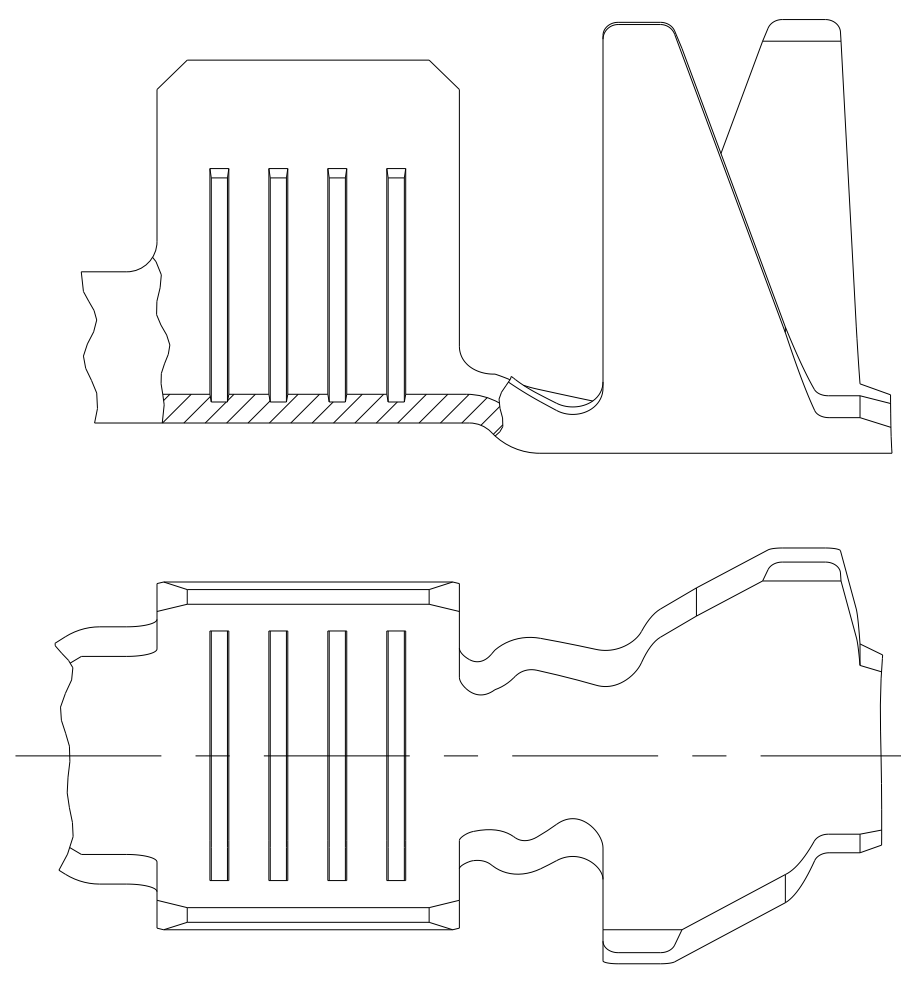
DESIGN 1
 Ausfuehrung 1



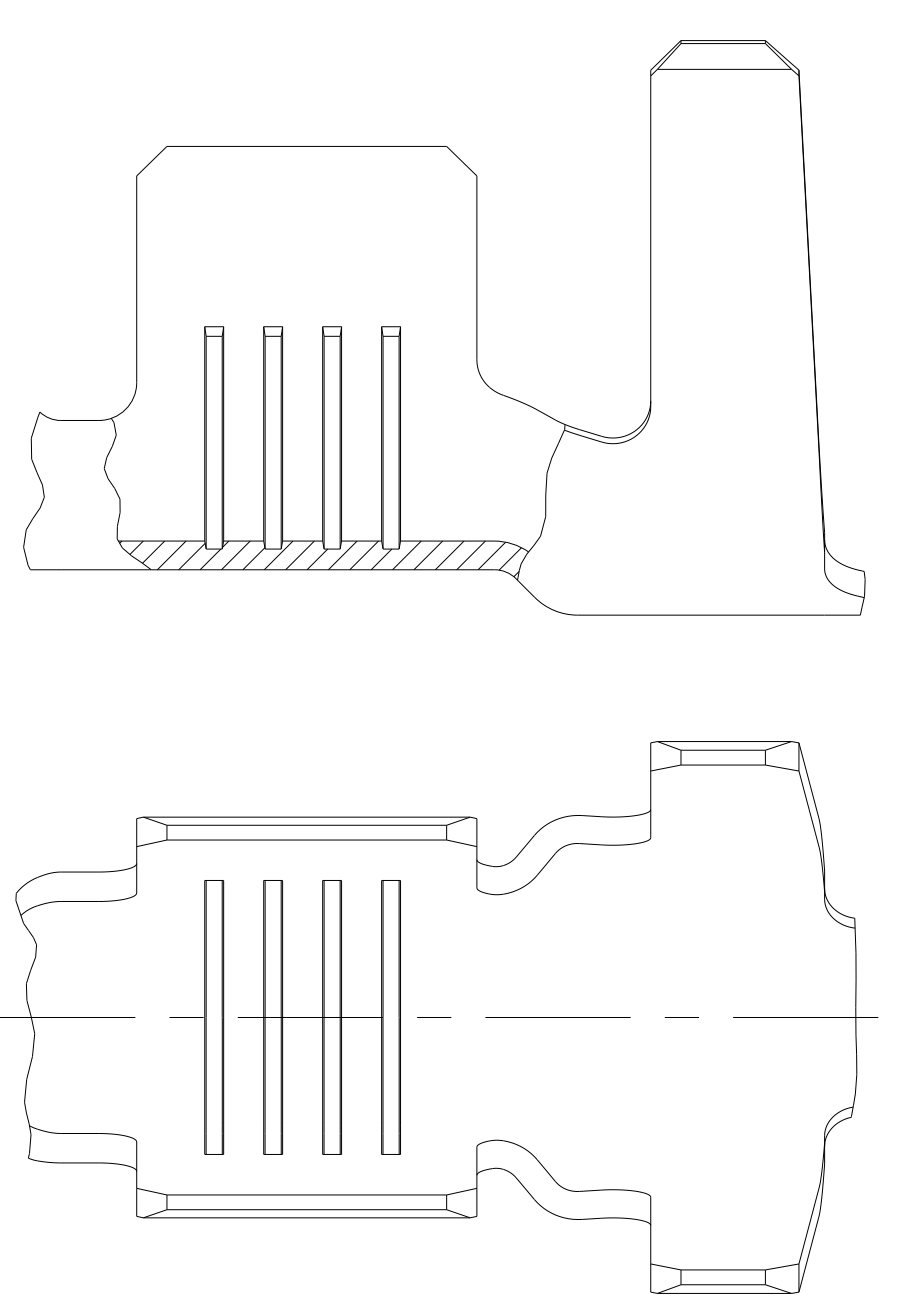
DESIGN 2
 Ausfuehrung 2



DESIGN 3
 Ausfuehrung 3

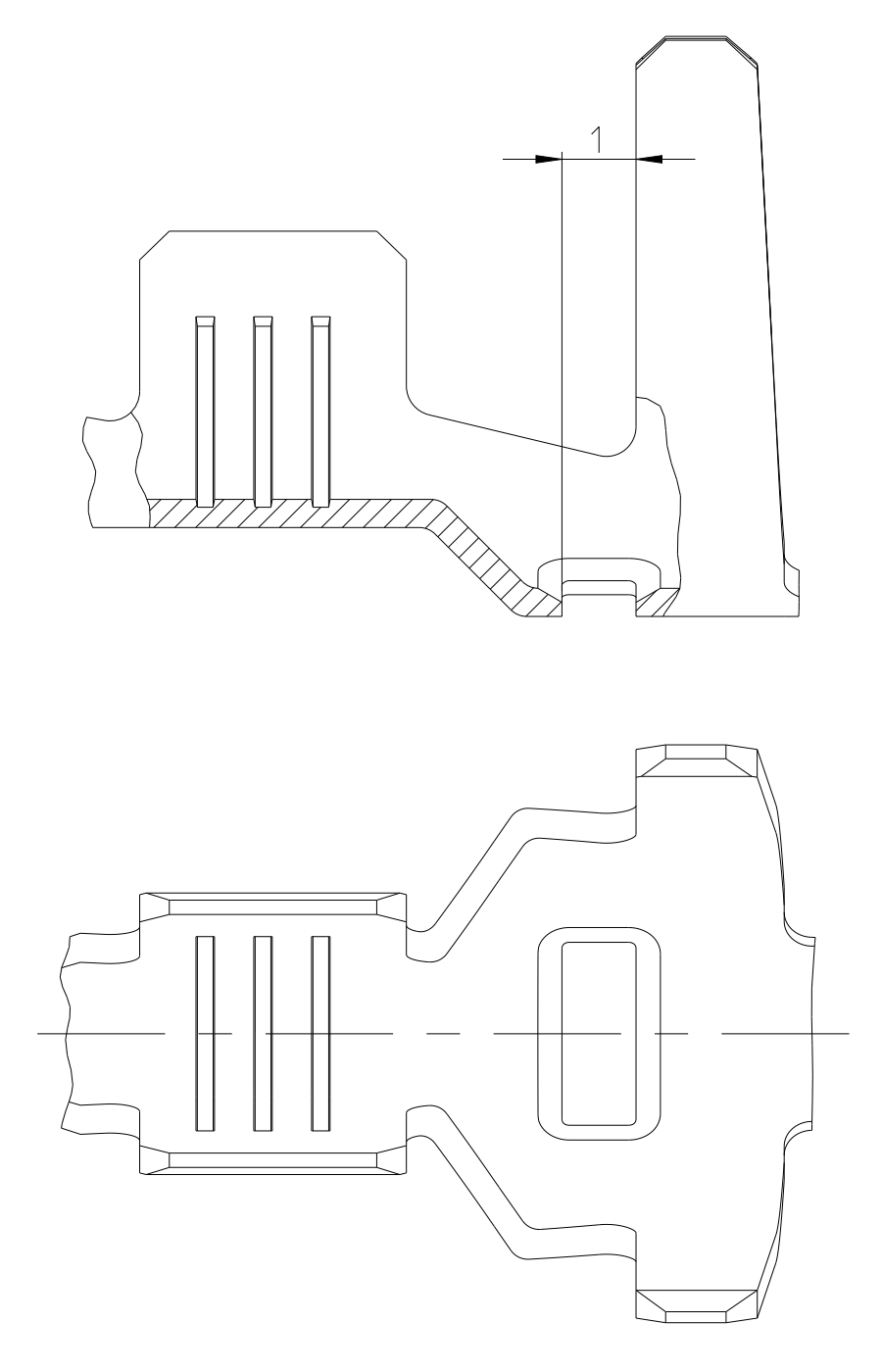


DESIGN 4
 Ausfuehrung 4

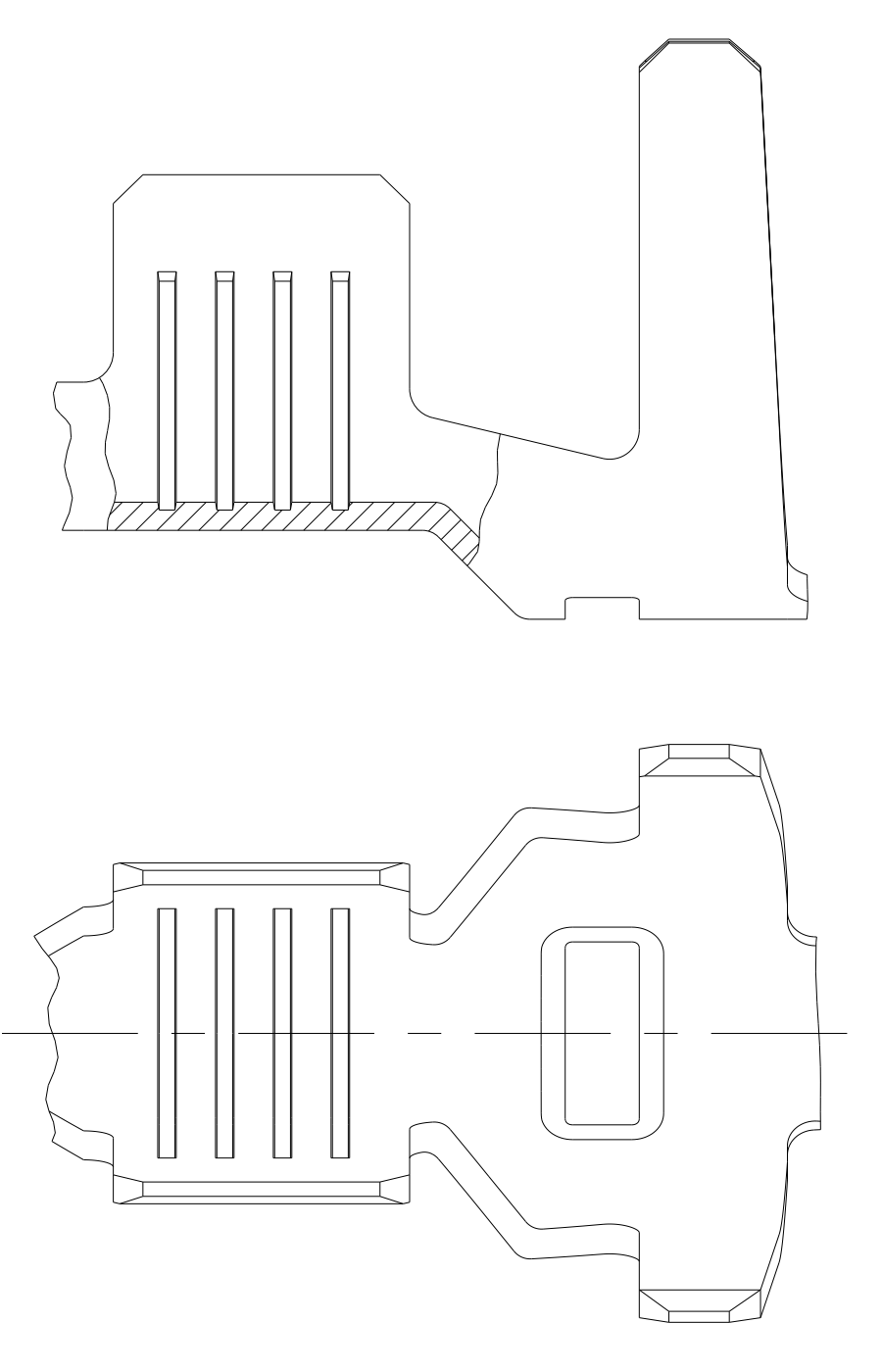


SINGLE WIRE SEAL
 Einzeldichtungssystem

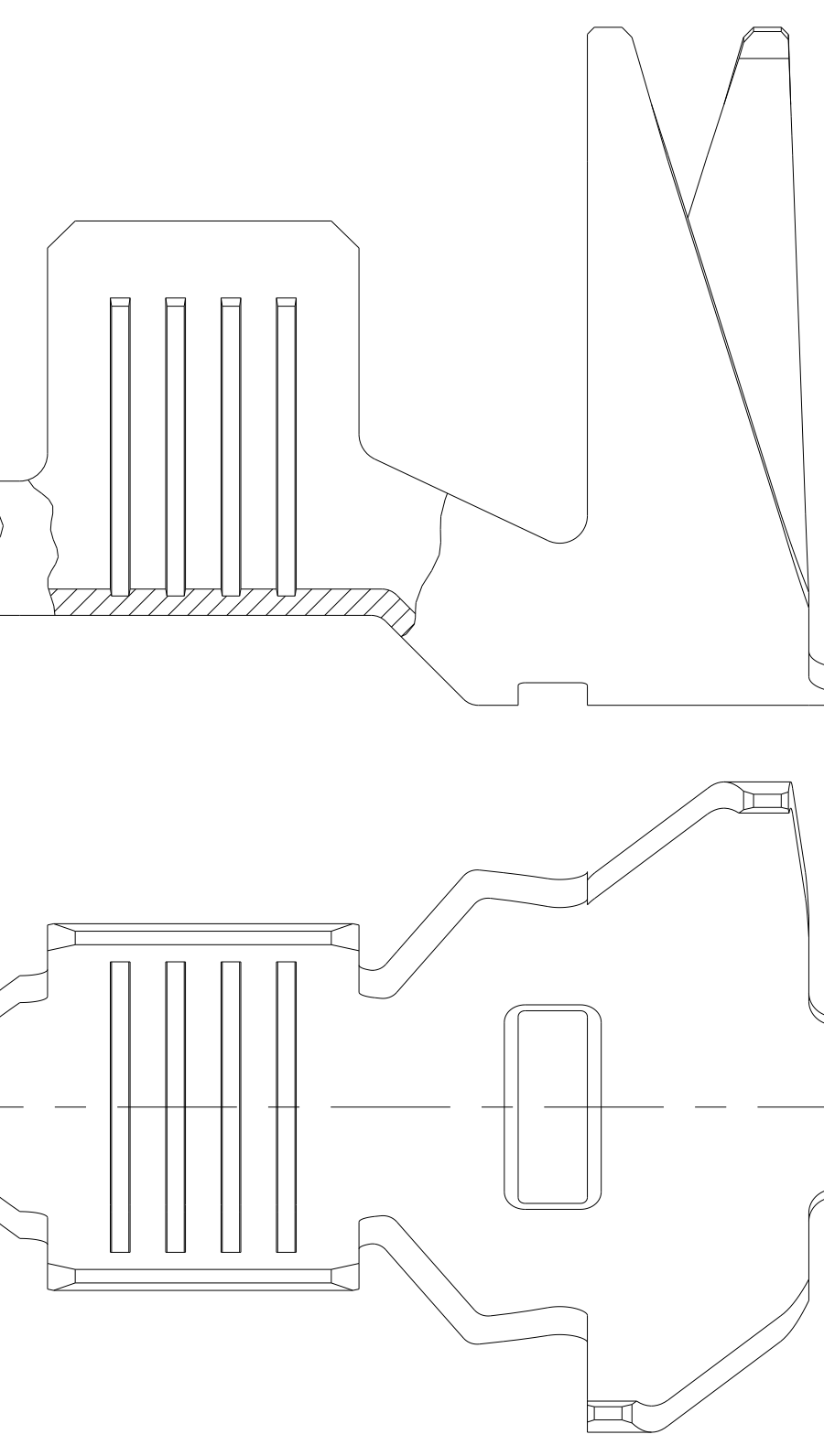
DESIGN 5
 Ausfuehrung 5



DESIGN 6
 Ausfuehrung 6

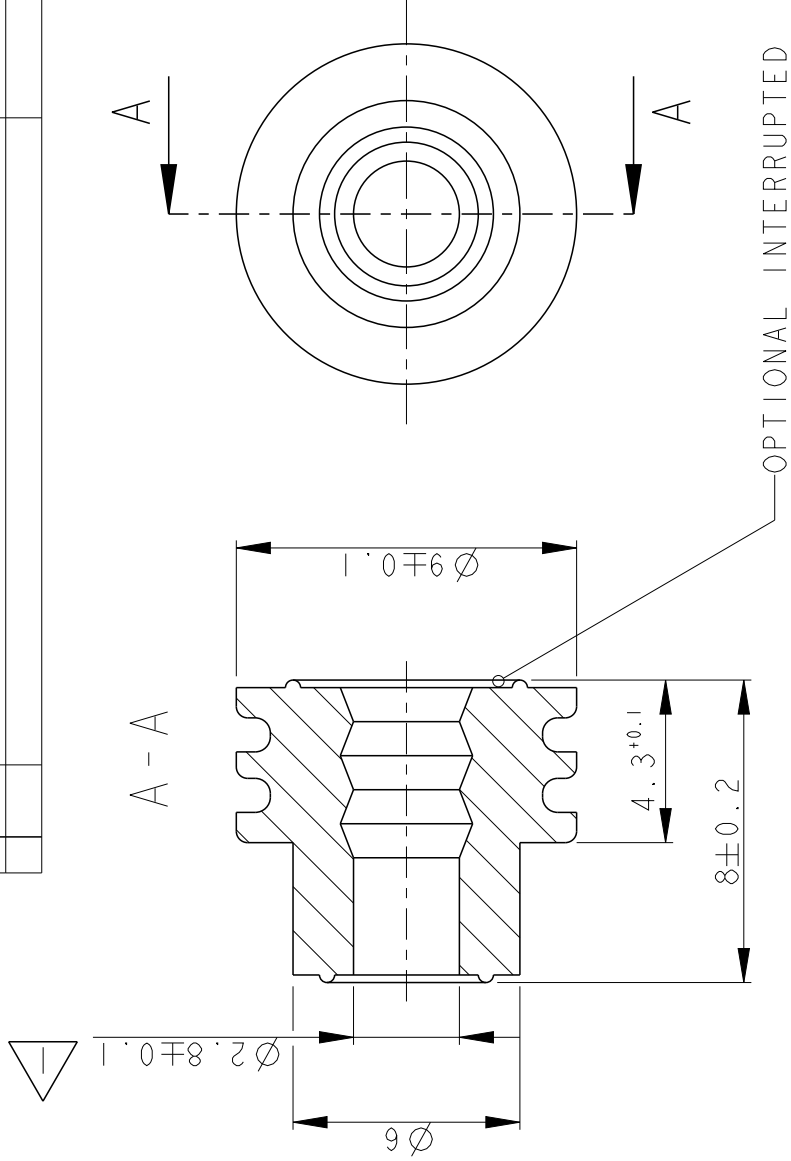


DESIGN 7
 Ausfuehrung 7

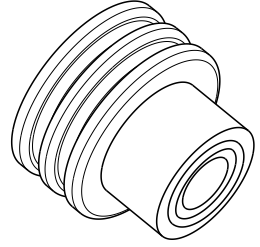


SINGLE WIRE SEAL / Einzeldichtungssystem	Part No.	Rev.	Material	Surface	DGB	SEE / siehe SECTION A-A Schnitt A-A	SEE / siehe SECTION B-B Schnitt B-B	SEE / siehe WIRE CRIMP Drahtcrimp	Application Tool (MQC APPLICATOR HD) Anschlagwerkzeug	Extraction Tool Ausdrueckwerkzeug No. 726548-1	A	B	C	D
						E, G, D _{Gr}	H, K, D	WIRE CRIMP Drahtcrimp						
SINGLE WIRE SEAL / Einzeldichtungssystem	2-2112966-1	A	CuFe2	△	6.0	E = 5.3 G = 5.7 D _{Gr} = 2.9	H = 9.4 K = 9.8 D = 6.2	6.0 mm ² = 2.35 AWG 10 = 2.30	1855636-6		4.5	7.8	11.0	29.3
	2-2112966-2	A	CuFe2	△	6.0	E = 5.3 G = 5.7 D _{Gr} = 2.9	H = 9.4 K = 9.8 D = 6.2	6.0 mm ² = 2.35 AWG 10 = 2.30	1855636-6		4.5	7.8	11.0	29.3
	2-962919-2	E	CuFe2	△	4.0	E = 4.6 G = 4.8 D _{Gr} = 2.3	H = 7.8 K = 7.8 D = 5.5	4.0 mm ² = 2.34	2-878567-2		4.0	7.1	9.1	28.3
	1-962919-2	D	CuSn4	△	4.0	E = 4.6 G = 4.8 D _{Gr} = 2.3	H = 7.8 K = 7.8 D = 5.5	4.0 mm ² = 2.34	539757-2		4.0	7.1	9.1	28.3
	1-962919-1	D	CuSn4	△	4.0	E = 4.6 G = 4.8 D _{Gr} = 2.3	H = 7.8 K = 7.8 D = 5.5	4.0 mm ² = 2.34	539757-2		4.0	7.1	9.1	28.3
	2-962918-2	E	CuFe2	△	>1.0 - 2.5	E = 3.8 G = 4.0 D _{Gr} = 1.7	H = 7.8 K = 7.8 D = 5.5	2.5 mm ² = 1.97 2.0 mm ² = 1.83 1.5 mm ² = 1.69	2-878566-2		3.6	6.7	8.7	28.3
	2-962918-1	E	CuFe2	△	>1.0 - 2.5	E = 3.8 G = 4.0 D _{Gr} = 1.7	H = 7.8 K = 7.8 D = 5.5	2.5 mm ² = 1.97 2.0 mm ² = 1.83 1.5 mm ² = 1.69	2-878566-2		3.6	6.7	8.7	28.3
	1-962918-2	D	CuSn4	△	>1.0 - 2.5	E = 3.8 G = 4.0 D _{Gr} = 1.7	H = 7.8 K = 7.8 D = 5.5	2.5 mm ² = 1.97 2.0 mm ² = 1.83 1.5 mm ² = 1.69	539757-2		3.6	6.7	8.7	28.3
	1-962918-1	D	CuSn4	△	>1.0 - 2.5	E = 3.8 G = 4.0 D _{Gr} = 1.7	H = 7.8 K = 7.8 D = 5.5	2.5 mm ² = 1.97 2.0 mm ² = 1.83 1.5 mm ² = 1.69	539757-2		3.6	6.7	8.7	28.3
FLK-WIRE / FLK-Leitung	2-968050-1	A	CuFe2	△	6.0	E = 5.3 G = 5.6 D _{Gr} = 2.9	H = 7.3 K = 7.6 D = 4.6	6.0 mm ² = 2.55 4.0 mm ² = 2.17	2-878968-2		4.5	6.8	9.1	28.8
	1-968050-1	A	CuSn4	△	4.0	E = 5.3 G = 5.6 D _{Gr} = 2.9	H = 7.3 K = 7.6 D = 4.6	6.0 mm ² = 2.55 4.0 mm ² = 2.17	2-878968-2		4.5	6.8	9.1	28.8
	2-962846-1	D	CuFe2	△	4.0	E = 4.6 G = 4.8 D _{Gr} = 2.4	H = 6.7 K = 7.0 D = 4.0	4.0 mm ² = 2.33	2-878564-2		4.0	6.0	10.8	30.5
	1-962846-2	C	CuSn4	△	4.0	E = 4.6 G = 4.8 D _{Gr} = 2.4	H = 6.7 K = 7.0 D = 4.0	4.0 mm ² = 2.33	539759-2		4.0	6.0	10.8	30.5
	1-962846-1	C	CuSn4	△	4.0	E = 4.6 G = 4.8 D _{Gr} = 2.4	H = 6.7 K = 7.0 D = 4.0	4.0 mm ² = 2.33	539759-2		4.0	6.0	10.8	30.5
	1-962845-2	D	CuSn4	△	>1.0 - 2.5	E = 3.8 G = 4.0 D _{Gr} = 1.7	H = 5.7 K = 5.9 D = 3.2	2.5 mm ² = 1.97 2.0 mm ² = 1.83 1.5 mm ² = 1.69	2-878563-2		3.6	5.2	9.0	28.7
	1-962845-1	D	CuSn4	△	>1.0 - 2.5	E = 3.8 G = 4.0 D _{Gr} = 1.7	H = 5.7 K = 5.9 D = 3.2	2.5 mm ² = 1.97 2.0 mm ² = 1.83 1.5 mm ² = 1.69	539759-2		3.6	5.2	9.0	28.7
	2-968050-2	A	CuFe2	△	6.0	E = 5.3 G = 5.6 D _{Gr} = 2.9	H = 7.3 K = 7.6 D = 4.6	6.0 mm ² = 2.55 4.0 mm ² = 2.17	2-878968-2		4.5	6.8	9.1	28.8
	2-963736-2	C	CuFe2	△	4.0	E = 4.6 G = 4.8 D _{Gr} = 2.3	H = 5.5 K = 5.7 D = 3.2	4.0 mm ² = 2.33	2-878562-2		4.0	5.9	9.3	29.0
FLR-WIRE / FLR-Leitung	2-963736-1	C	CuFe2	△	4.0	E = 4.6 G = 4.8 D _{Gr} = 2.3	H = 5.5 K = 5.7 D = 3.2	4.0 mm ² = 2.33	2-878562-2		4.0	5.9	9.3	29.0
	1-963736-2	B	CuSn4	△	4.0	E = 4.6 G = 4.8 D _{Gr} = 2.3	H = 5.5 K = 5.7 D = 3.2	4.0 mm ² = 2.33	2-878562-2		4.0	5.9	9.3	29.0
	1-963736-1	B	CuSn4	△	4.0	E = 4.6 G = 4.8 D _{Gr} = 2.3	H = 5.5 K = 5.7 D = 3.2	4.0 mm ² = 2.33	2-878562-2		4.0	5.9	9.3	29.0
	2-963735-2	C	CuFe2	△	>1.0 - 2.5	E = 3.8 G = 4.0 D _{Gr} = 1.7	H = 4.5 K = 4.7 D = 2.6	2.5 mm ² = 1.97 2.0 mm ² = 1.83 1.5 mm ² = 1.69	2-878561-2		3.5	5.1	8.1	27.8
	2-963735-1	C	CuFe2	△	>1.0 - 2.5	E = 3.8 G = 4.0 D _{Gr} = 1.7	H = 4.5 K = 4.7 D = 2.6	2.5 mm ² = 1.97 2.0 mm ² = 1.83 1.5 mm ² = 1.69	2-878561-2		3.5	5.1	8.1	27.8
	1-963735-2	B	CuSn4	△	>1.0 - 2.5	E = 3.8 G = 4.0 D _{Gr} = 1.7	H = 4.5 K = 4.7 D = 2.6	2.5 mm ² = 1.97 2.0 mm ² = 1.83 1.5 mm ² = 1.69	2-878561-2		3.5	5.1	8.1	27.8
	1-963735-1	B	CuSn4	△	>1.0 - 2.5	E = 3.8 G = 4.0 D _{Gr} = 1.7	H = 4.5 K = 4.7 D = 2.6	2.5 mm ² = 1.97 2.0 mm ² = 1.83 1.5 mm ² = 1.69	2-878561-2		3.5	5.1	8.1	27.8
	2-963734-2	C	CuFe2	△	0.5 - 1.0	E = 2.8 G = 3.0 D _{Gr} = 1.1	H = 3.3 K = 3.5 D = 1.8	1.0 mm ² = 1.56 0.75 mm ² = 1.47 0.5 mm ² = 1.38	2-878654-2		3.0	4.6	6.8	26.5
	2-963734-1	C	CuFe2	△	0.5 - 1.0	E = 2.8 G = 3.0 D _{Gr} = 1.1	H = 3.3 K = 3.5 D = 1.8	1.0 mm ² = 1.56 0.75 mm ² = 1.47 0.5 mm ² = 1.38	2-878654-2		3.0	4.6	6.8	26.5
1-963734-2	B	CuSn4	△	0.5 - 1.0	E = 2.8 G = 3.0 D _{Gr} = 1.1	H = 3.3 K = 3.5 D = 1.8	1.0 mm ² = 1.56 0.75 mm ² = 1.47 0.5 mm ² = 1.38	539759-2		3.0	4.6	6.8	26.5	
2-965984-1	A	CuFe2	△	0.2 - 0.5	E = 2.2 G = 2.2 D _{Gr} = 0.8	H = 3.1 K = 3.1 D = 1.4	-	-		2.5	3.7	5.7	26.5	
1-965984-1	B	CuSn4	△	0.2 - 0.5	E = 2.2 G = 2.2 D _{Gr} = 0.8	H = 3.1 K = 3.1 D = 1.4	-	-		2.5	3.7	5.7	26.5	


REVISIONS					
P	LTR	DESCRIPTION	DATE	DWN	APVD
A3		REVISED (ECR-15-003702)	09MAR2015	M.G.	M.G.



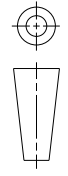

DEDICATED FOR INSULATION DIA:
 3.4-3.7mm (FLR CABLE - WIRE SIZE 4.0mm²)
 3.4-3.74mm (ALUMINIUM WIRE ONLY - WIRE SIZE 4mm²)
SEALING FOR STANDARD-POWER-TIMER, AMP MCP6.3/4.8K AND 5.8mm TAB



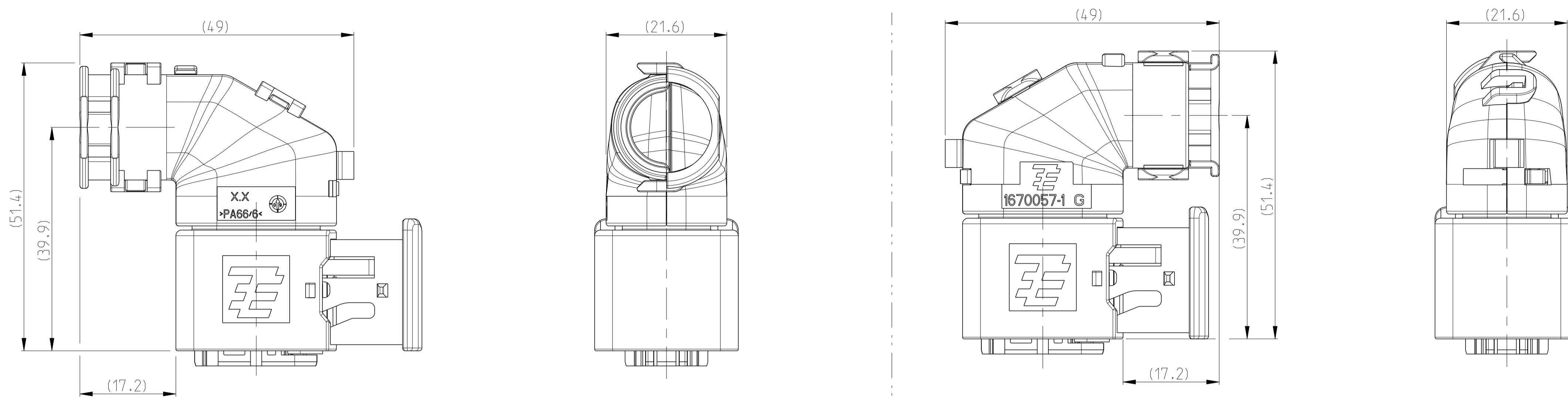
BLUE	SILICONE 50° SHORE A INHERENTLY LUBRICATED	1394512-1
COLOR	MATERIAL	PART Nr.

DWN	R. Schaefer	MATERIAL	SEE TABLE	FINISH	SEE TABLE
CHK	U. Muenk	190CT2000			
APVD	-				
PRODUCT SPEC	-	 TE Connectivity			
APPLICATION SPEC	-				
NAME	SINGLE WIRE SEAL				
SIZE	A4	CAGE CODE	DRAWING NO	RESTRICTED TO	
WEIGHT	0.25 gr	-	G-1394512	-	-
Customer Drawing		SCALE	5:1	SHEET	1 OF 1
				REV	A3

DIMENSIONS:	m
TOLERANCES UNLESS OTHERWISE SPECIFIED:	
0 PLC	±0.2
1 PLC	±0.2
2 PLC	±-
3 PLC	±-
4 PLC	±-
ANGLES	±1°



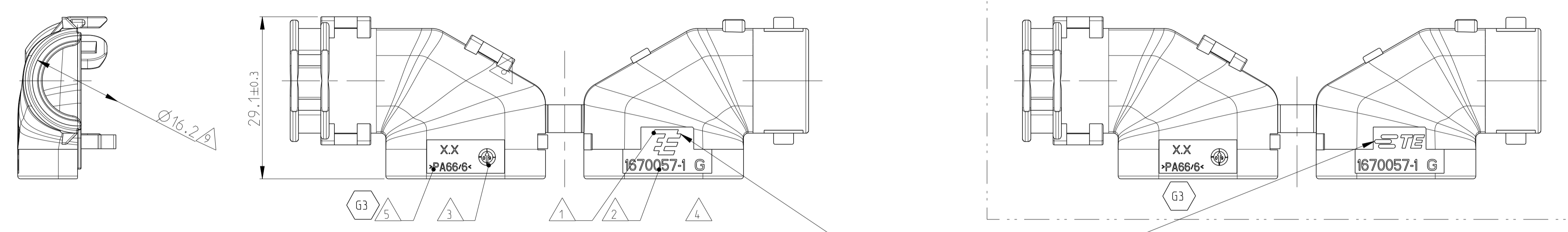
11 MOUNTED COVER OPTIONS
 Befestigungsmoeglichkeiten der Kappe



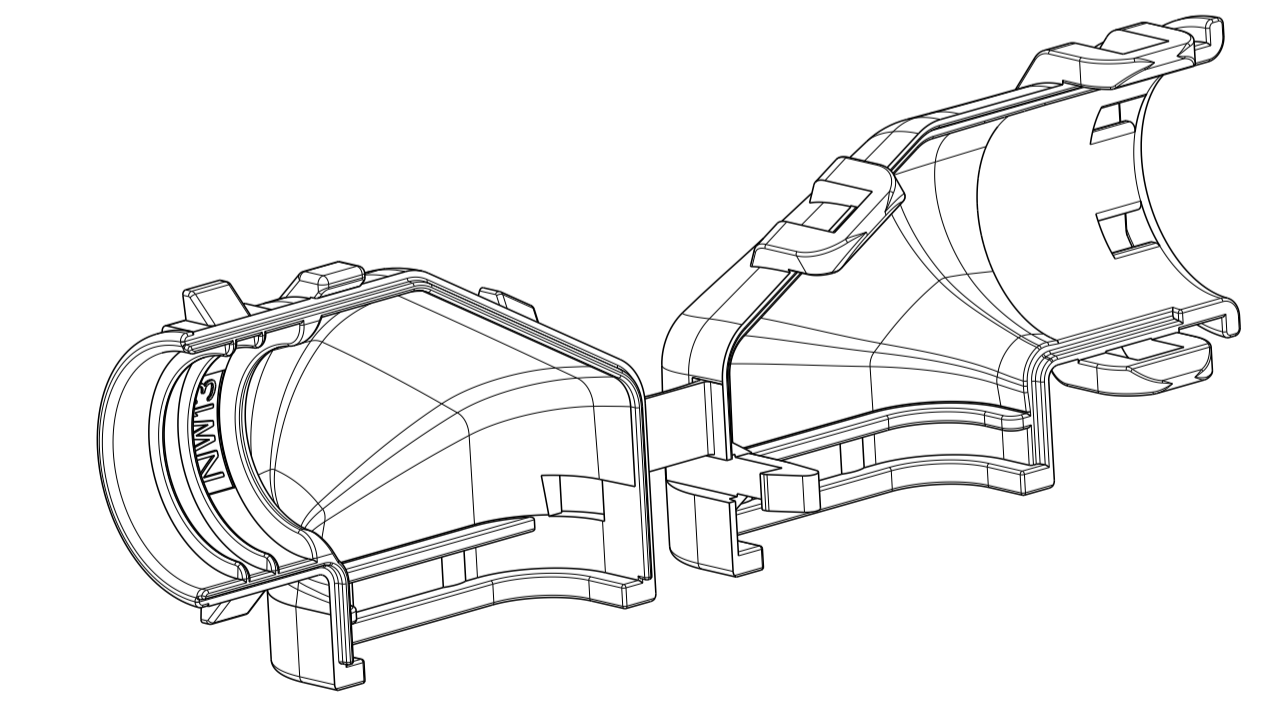
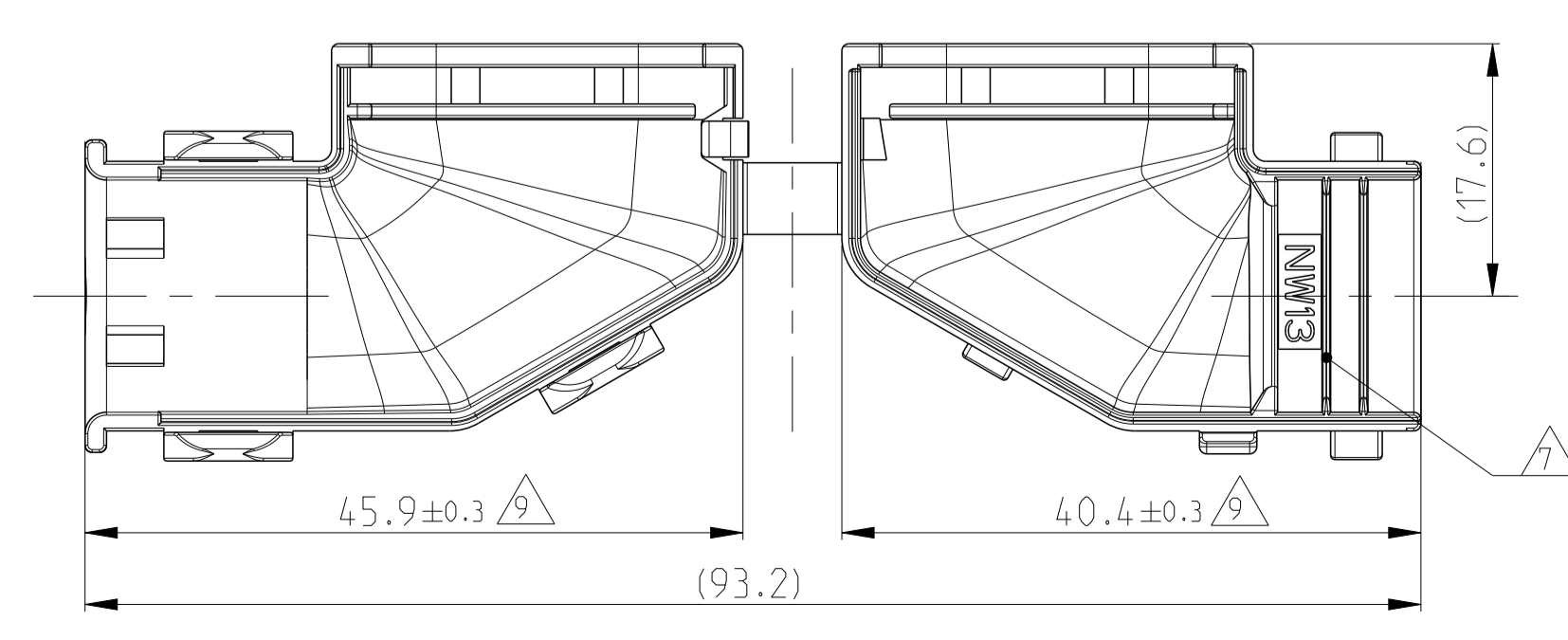
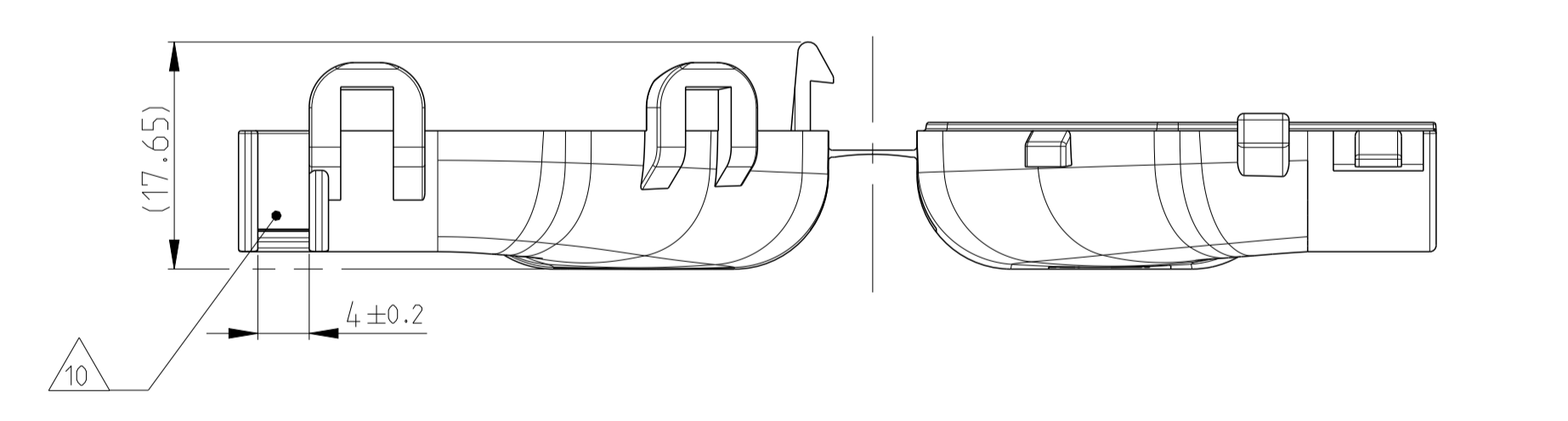
REVISIONS				
P.	LTN	DESCRIPTION	DATE	DMN APVD
G		ECR-09-012157 (PCN E-09-005080 PART CHANG.)	04MAR2009	SJ CE
G1		DETAILS SEE PCN E-10-002668	04FEB2010	SJ JG
G2		New view added with TE Logo depending on mold	28NOV2017	MAH. GILC
G3		DETAILS SEE PCN E-18-018520	27NOV2018	MAH. GILC

NOTES
 Bemerkungen

- 1 TE LOGO
TE Logo
- 2 TE ORDER-NO.
TE Bestell-Nr.
- 3 PRODUCTION DATE
Produktionsdatum
- 4 LETTER-INSERT FOR THE REVISION STATUS OF THE MOLD
Schriftsatz fuer Aenderungszustand des Werkzeuges
ACTUAL STATUS: SEE TABLE
Aktueller Stand: siehe Tabelle
- 5 MATERIAL MARKING ACCORDING TO VDA 260
Werkstoffkennzeichnung nach VDA 260
- 6 BULK PACKAGING IN CORRUGATED BOX
Schuetztgut im Versandkarton
- 7 CABLE EXIT DESIGNED FOR CORRUGATED TUBE NW 13
Kabelabgang ausgelegt fuer Wellrohr NW 13
- 8 MALFUNCTION CAUSED BY LAQUER IS NOT COVERED
BY TE WARRANTY
Funktionsbeeintraechtigung durch Lackieren liegt nicht
im Einfluss und Gewährleistungsumfang von TE
- 9 WARPAGE UP TO -1.0mm FROM NOM. DIMENSION PERMITTED
Verzug zulaessig bis -1.0mm vom Nennmass
- 10 MAX. CABLE TIE WIDTH: 3.8mm
max. Kabelbinderbreite: 3.8mm
- 11 SUITABLE FOR TAB AND RECEPTACLE HOUSING GROUP C
SEE PRODUCT GROUP DRAWING 1563709
Passend fuer Flachstecker- und Buchsengehaeuse der Gruppe C
siehe Produktgruppenzeichnung 1563709



TE LOGO RELATED TO MOLDING TOOL
 TE Logo abhaengig von Spritzgusswerkzeug



0-1670057-1	G	COVER 90° Kappe 90°	1
TE ORDER-NO. TE Bestell-Nr.	REV.	DESCRIPTION Beschreibung	ITEM

THIS DRAWING IS A CONTROLLED DOCUMENT.

DIMENSIONS: mm	TOLERANCES UNLESS OTHERWISE SPECIFIED: 0 PLC ±0.10 1 PLC ±0.15 2 PLC ±0.20 3 PLC ±0.25 4 PLC ±0.30 ANGLES ±0.5°	DMN 260CT2006 CHV 310CT2006 APVD J.Grandzow F. Oberwein 02NOV2006	NAME COVER 90 DEG. Kappe 90 Grad HDSCS - GROUP C
MATERIAL PA66/6 (V-0)	FINISH BLACK schwarz	WEIGHT 5.2g	SIZE A1
CUSTOMER DRAWING		SCALE 5:1	SHEET 1 OF 1

4805 (3/13)