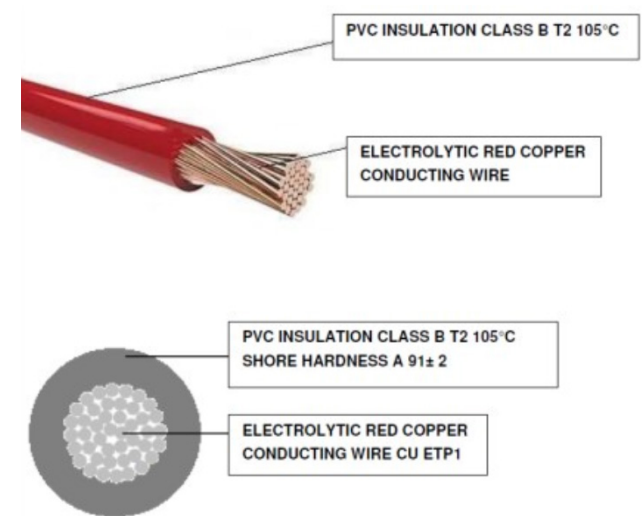


M 1-1718806-1C



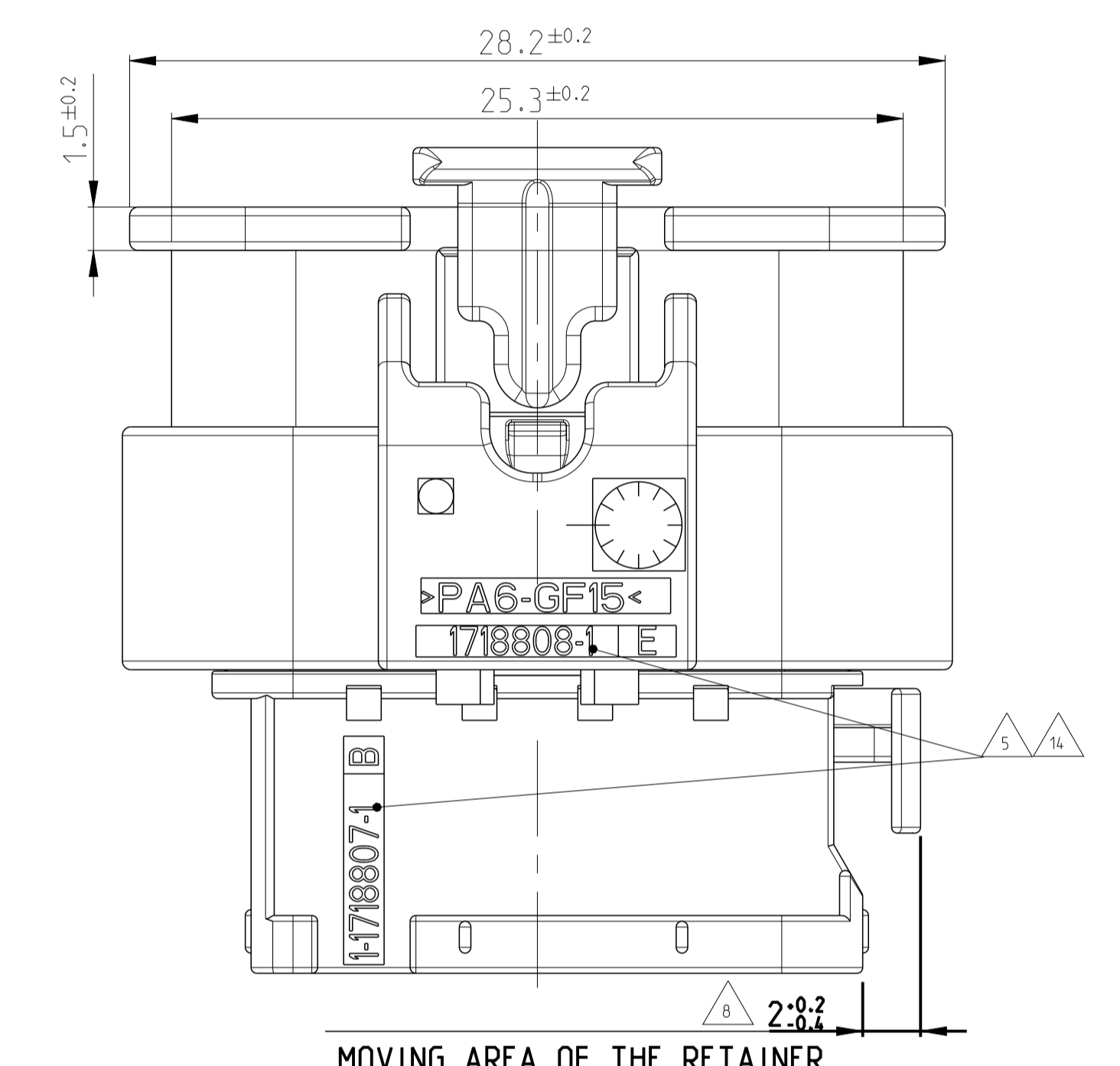
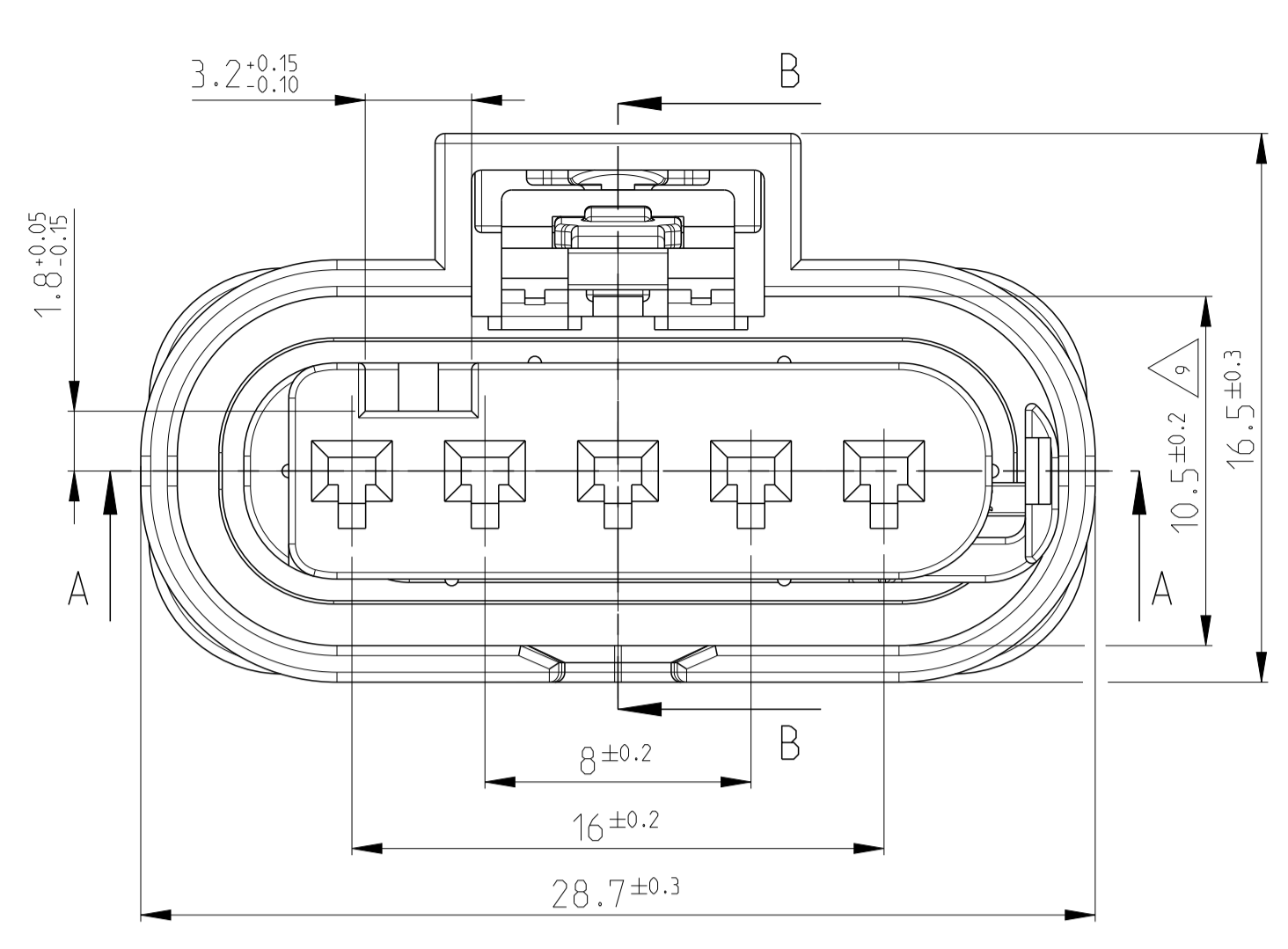
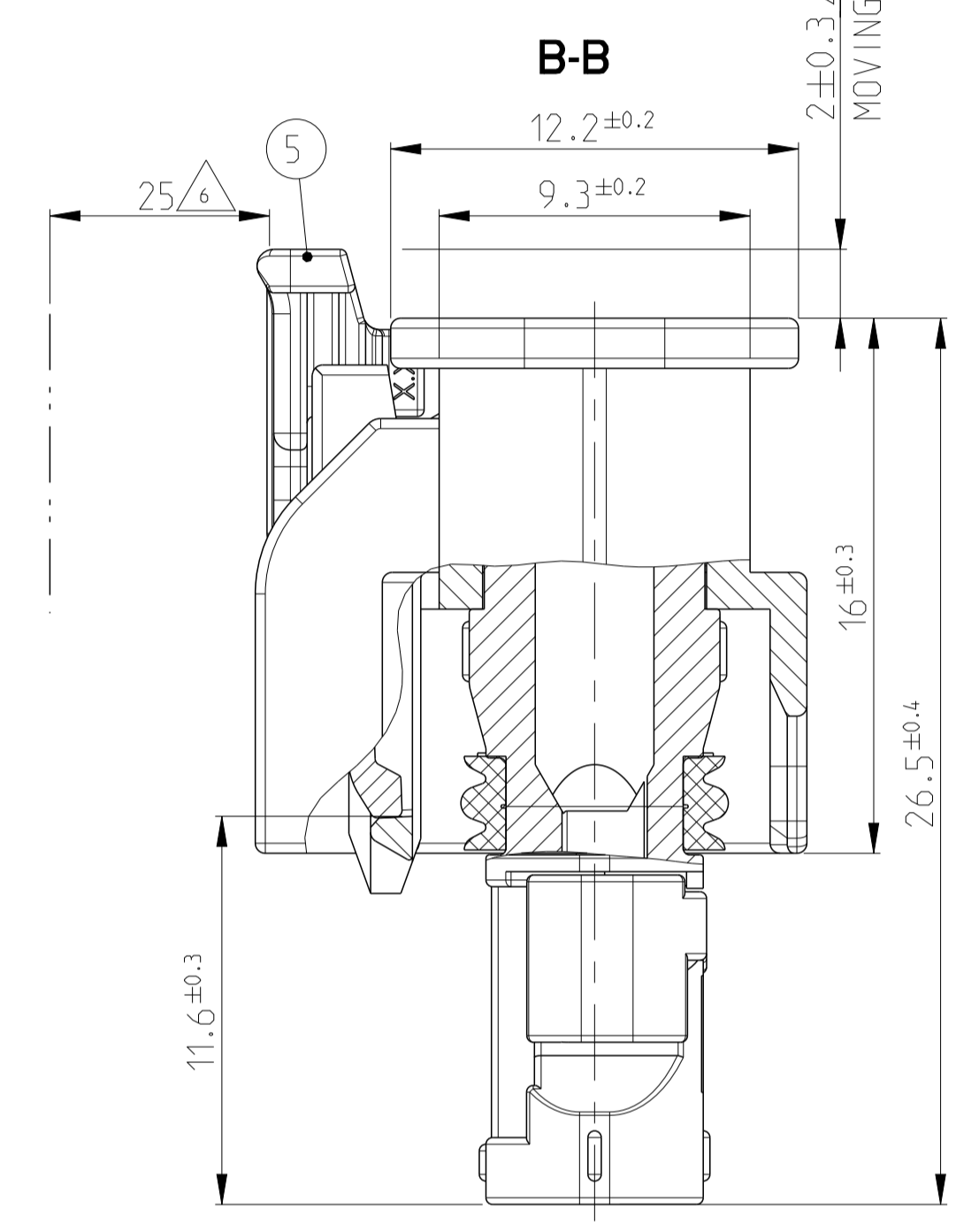
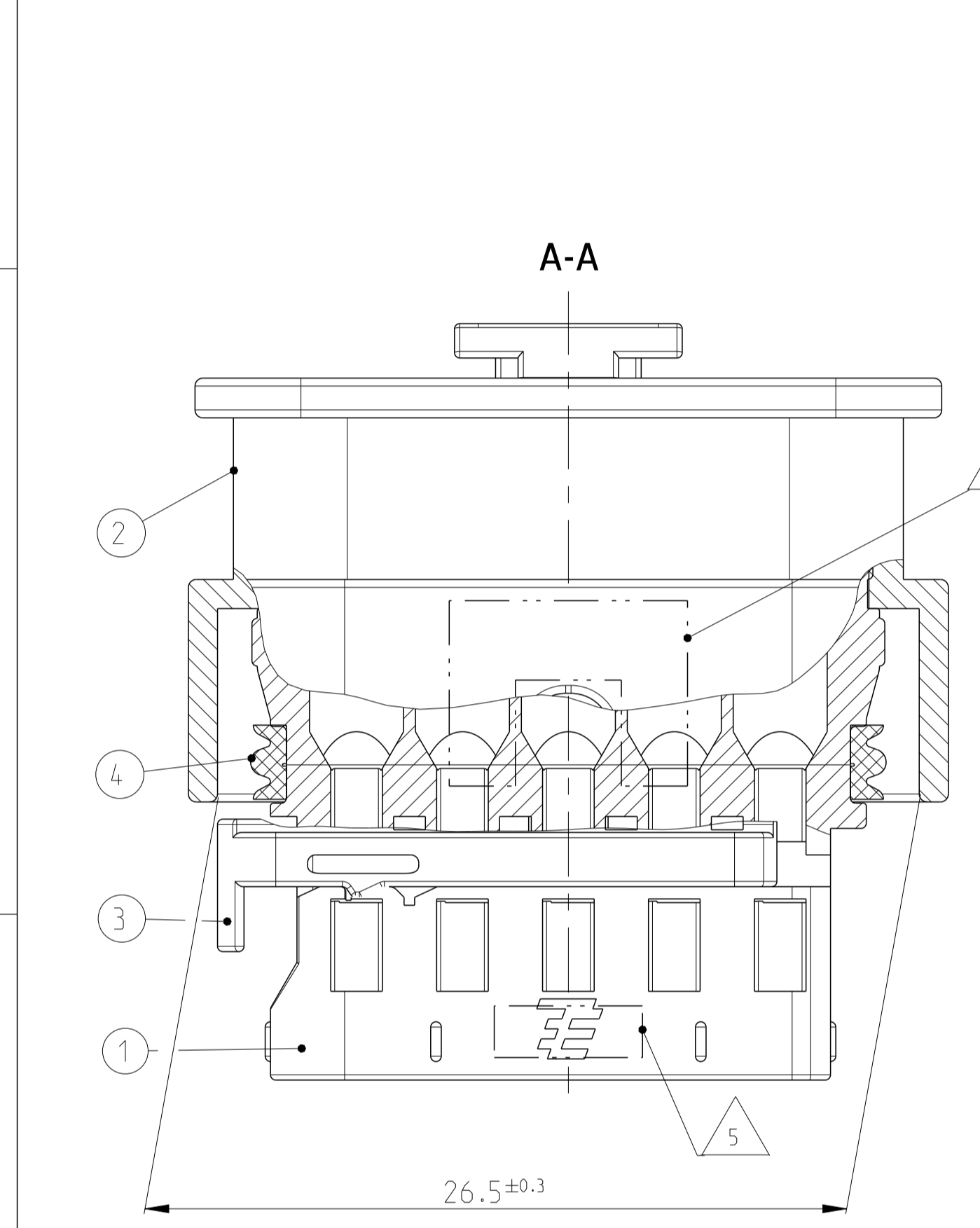
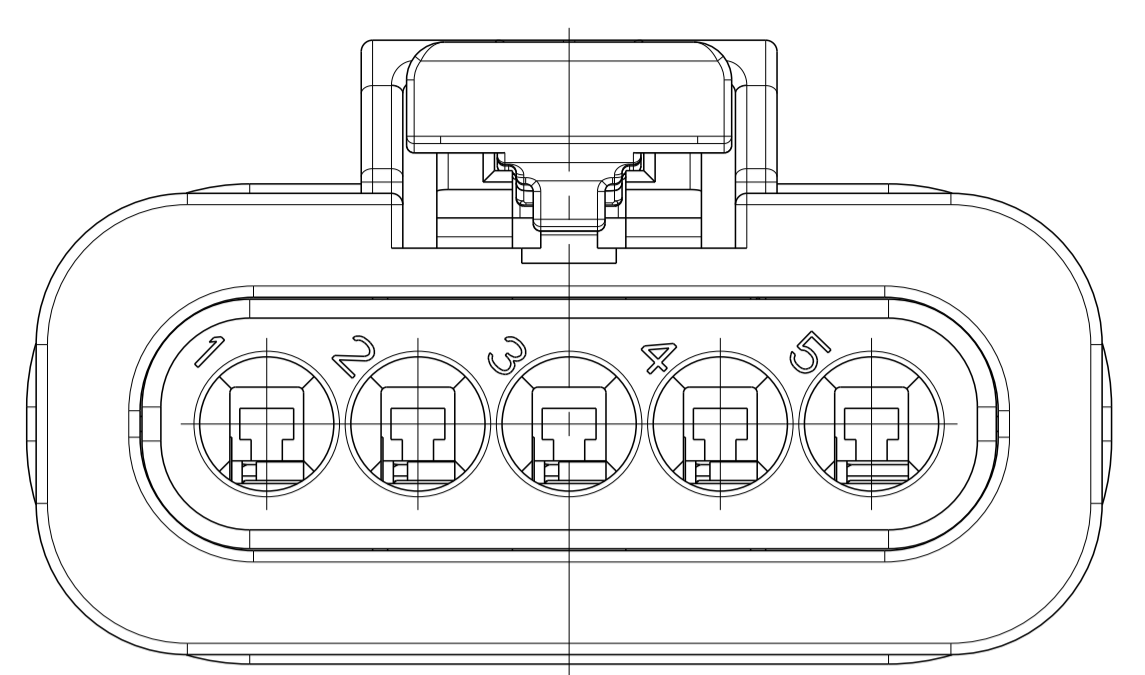
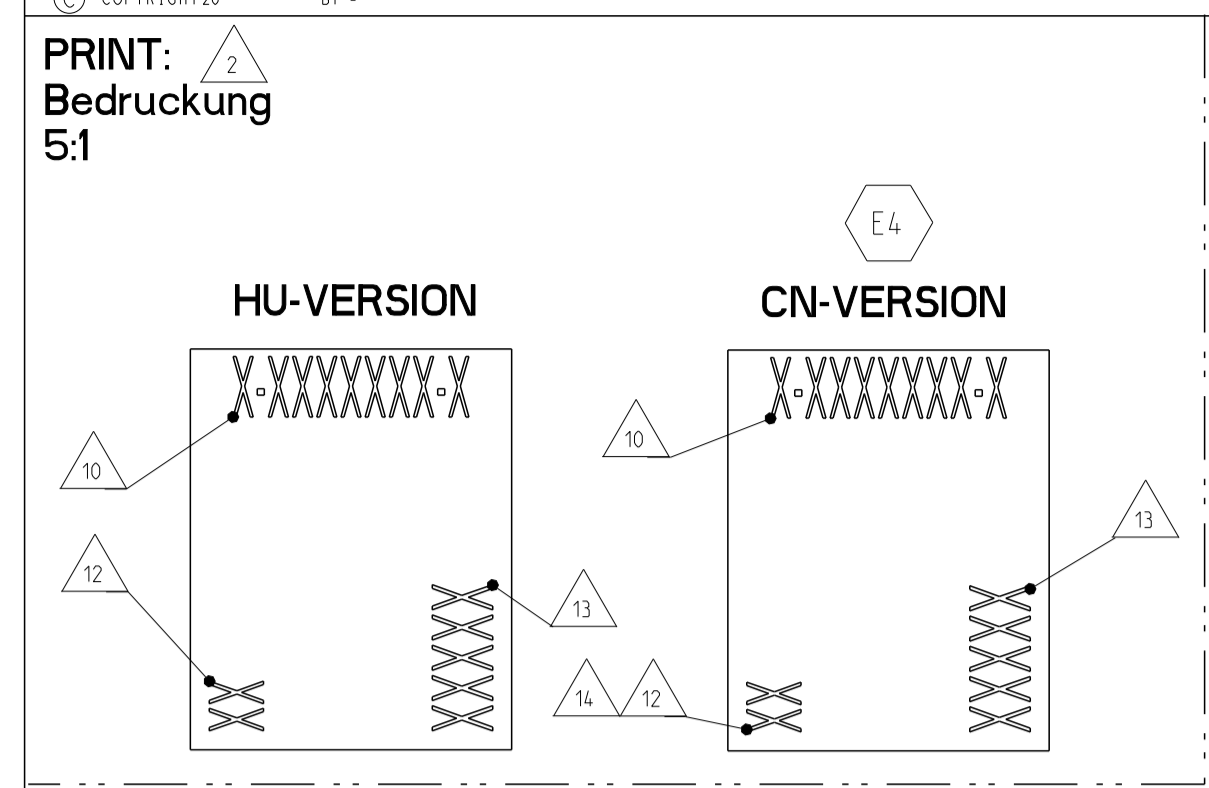
Caratteristiche CAVO	
Temperatura d'uso	-40 °C / +105 °C (IDLE STATE)
Sezione	1.00 mmq
Colore	Nero
Documenti di riferimento	ISO 19642 : 2019 / DIN 72551 ISO 6722 CLASS B / LV 112 / ISO 3795 FIAT 91107 / 18 (where applicable) ROHS II/III UN R118
Lunghezza	20 cm
Tipologia	F3T2



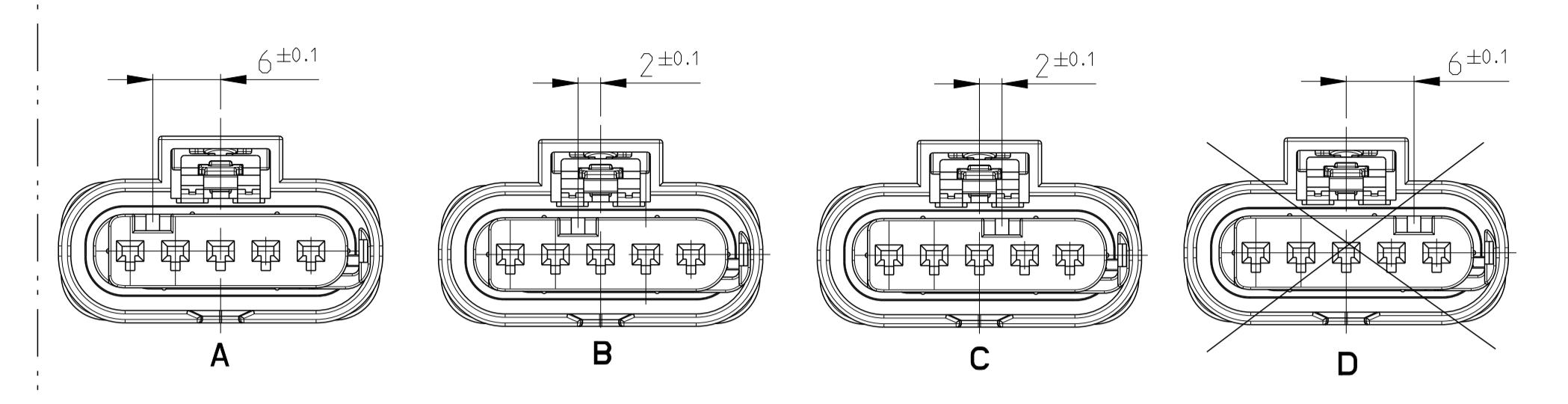
CROSS SECTION	COND. CONSTR.	EXT. DIAMETER.	INSUL. MATERIAL	EL. RES. MAX 20°	MAX VOLT.	INSULATION THICKNESS (+)
1 x 1,00	32 x 0,20 ± 0,01 mm	2,10 +0 mm -0,2 mm	PVC T2 HT 105 °C	18,5 OHM/KM	< 300 V	≥ 0,24

Proseguire nella pagina successiva per visualizzare la scheda tecnica dei componenti

Revisione	Prodotto
REV.00 13/04/2026	AfterMarket



**CODINGS
Kodierungen
M 2:1**



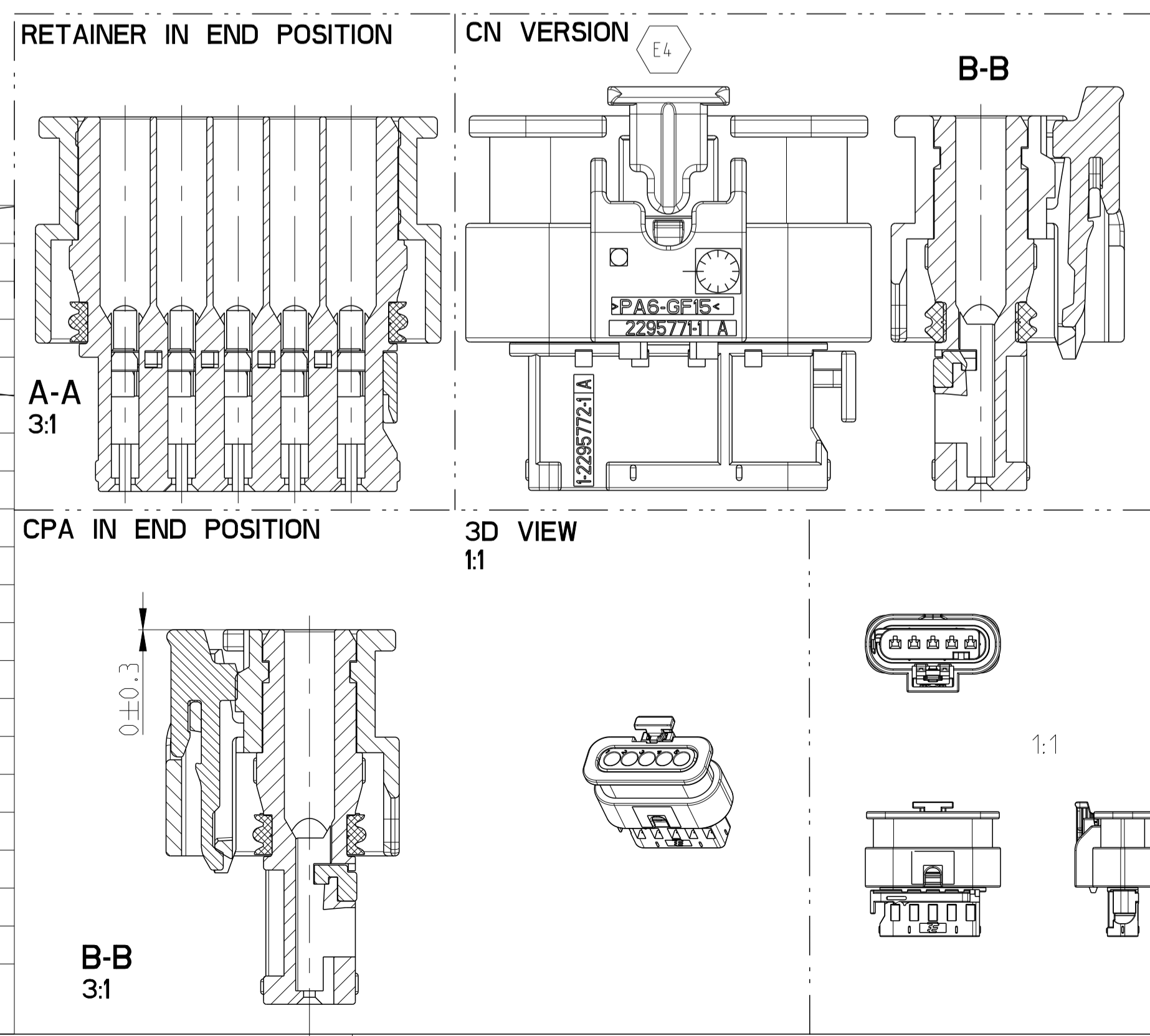
REVISIONS				
P	LTN	DESCRIPTION	DATE	OWN APVD
E1	3-1718806-1	ADDED TO BOM	22JUN2017	SZN RT
E2		LASERPRINT UPDATED WITH CN MANUF	13FEB2018	SZN RT
E3		DIVERGENT VERSION ADDED	10AUG2018	LSZ SZN
E4		LASER PRINT UPDATED WITH CN LOCATION	06AUG2019	SZN LSZ

**NOTES:
Bemerkungen:**

- ONLY THE GERMAN LANGUAGE VERSION IS AUTHORITY. Massgebend ist nur der deutsche Text.
- AREA FOR PRINT. Bereich für Bedruckung.
- USABLE CONTACTS MCON 1.2. SEE TE Connectivity -NO. 1452674, VERSION SINGLE WIRE SEAL. Verwendbare Kontakte MCON 1.2 siehe TE Connectivity -Zeichnung 1452674, Ausführung Einzeldichtung.
- MAX. WIRE SIZE RANGE 1.0 mm² FLR PERMITTED FOR CAVITY-Ø 3.55MM. QUANTITY SEE WIRE HARNESS DRAWING. FOR PERMISSIBLE CURRENT CARRYING CAPACITY OF THE SINGLE CONTACT SEE PRODUCT SPECIFICATION NO.108-18782 max. zulässiger Leitungsquerschnitt 1,0 mm² FLR, für Kammer-Ø 3,55mm die Stückzahl ist im Leitungssatz festgelegt die zulässige Strombelastbarkeit für die einzelnen Kontakte ist der Spezifikation 108-18782 zu entnehmen.
- SUPPLIER-MARK. Lieferantenkennzeichnung.
- SPACE OF ACTIVITY. Betätigungsfreiraum.
- SUPPLY CONDITION: CPA IN PRELOCKED POSITION. Auslieferungszustand: Gehäusesicherung in Vorraststellung.
- SUPPLY CONDITION: RETAINER IN PRELOCKED POSITION. Auslieferungszustand: Zweite Kontaktsicherung in Vorraststellung.
- WARPAGE PERMITTED TO MAX. -0.5mm. Verzug zulässig bis max. -0.5mm.
- TE CONNECTIVITY ORDER-NO. TE Connectivity Bestell-Nr.
- ACCORDING TO INTERFACE DRAWING SEE TE-NO. 114-18679-3. Passend zur Schnittstellen-Zeichnung siehe TE-Nr. 114-18679-3.
- ASSEMBLY LINE SEGMENT IDENTIFICATION. Markierung für Segment der Assembly Anlage.
- DATE CODE (DDYY). Datum Kodierung (TTJJ).
- OPTIONAL-DIVERGENT MARKING FOR PARTS FROM CHINESE AND U.S. PRODUCTION. Abweichende Beschriftung zulässig fuer Teile aus China und U.S. Produktion.

CODING A AS SHOWN
Kodierung A wie gezeichnet

TE-ORDER-NO.	COD	TITLE	REV	QTY	TITLE	MATERIAL	SURFACE/COLOUR	ITEM
4-1718806-1	D	5pos. MCON 1.2 - LL Connector, Sealed	D	1	MCON 1.2 - CPA	PA46-GF15	GRAY SIML. TO RAL 7037	5
				1	5pos. MCON 1.2 - Seal	MVQ-30	NATURE	4
				1	5pos. MCON 1.2 - Retainer	PA66-GF15	VIOLETT SIML. TO RAL 4006	3
				1	5pos. MCON 1.2 - Protec. Cover	PA6-GF15	VIOLETT SIML. TO RAL 9011	2
				1	5pos. MCON 1.2 - Recept. Hsg	PA66-GF30	GRAY SIML. TO RAL 4004	1
3-1718806-1	C	5pos. MCON 1.2 - LL Connector, Sealed	E	1	MCON 1.2 - CPA	PA46-GF15	GRAY SIML. TO RAL 7037	5
				1	5pos. MCON 1.2 - Seal	MVQ-30	NATURE	4
				1	5pos. MCON 1.2 - Retainer	PA66-GF15	VIOLETT SIML. TO RAL 4006	3
				1	5pos. MCON 1.2 - Protec. Cover	PA6-GF15	VIOLETT SIML. TO RAL 9011	2
				1	5pos. MCON 1.2 - Recept. Hsg	PA66-GF30	BLUE SIML. TO RAL 5012	1
2-1718806-1	B	5pos. MCON 1.2 - LL Connector, Sealed	E	1	MCON 1.2 - CPA	PA46-GF15	GRAY SIML. TO RAL 7037	5
				1	5pos. MCON 1.2 - Seal	MVQ-30	NATURE	4
				1	5pos. MCON 1.2 - Retainer	PA66-GF15	VIOLETT SIML. TO RAL 4006	3
				1	5pos. MCON 1.2 - Protec. Cover	PA6-GF15	BLACK SIML. TO RAL 9011	2
				1	5pos. MCON 1.2 - Recept. Hsg	PA66-GF30	NATURE	1
1-1718806-1	A	5pos. MCON 1.2 - LL Connector, Sealed	E	1	MCON 1.2 - CPA	PA46-GF15	GRAY SIML. TO RAL 7037	5
				1	5pos. MCON 1.2 - Seal	MVQ-30	NATURE	4
				1	5pos. MCON 1.2 - Retainer	PA66-GF15	VIOLETT SIML. TO RAL 4006	3
				1	5pos. MCON 1.2 - Protec. Cover	PA6-GF15	BLACK SIML. TO RAL 9011	2
				1	5pos. MCON 1.2 - Recept. Hsg	PA66-GF30	BLACK SIML. TO RAL 9011	1



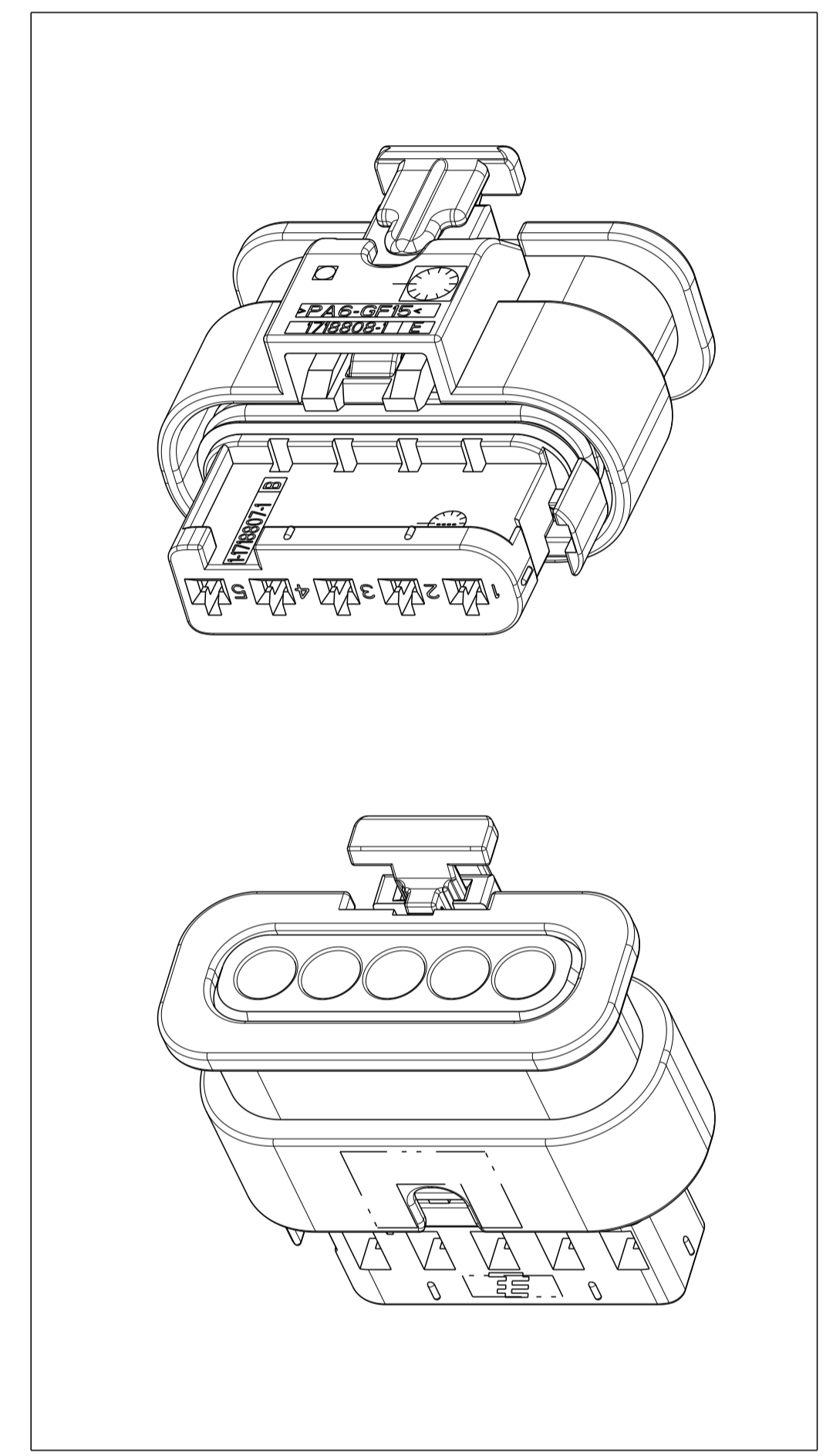
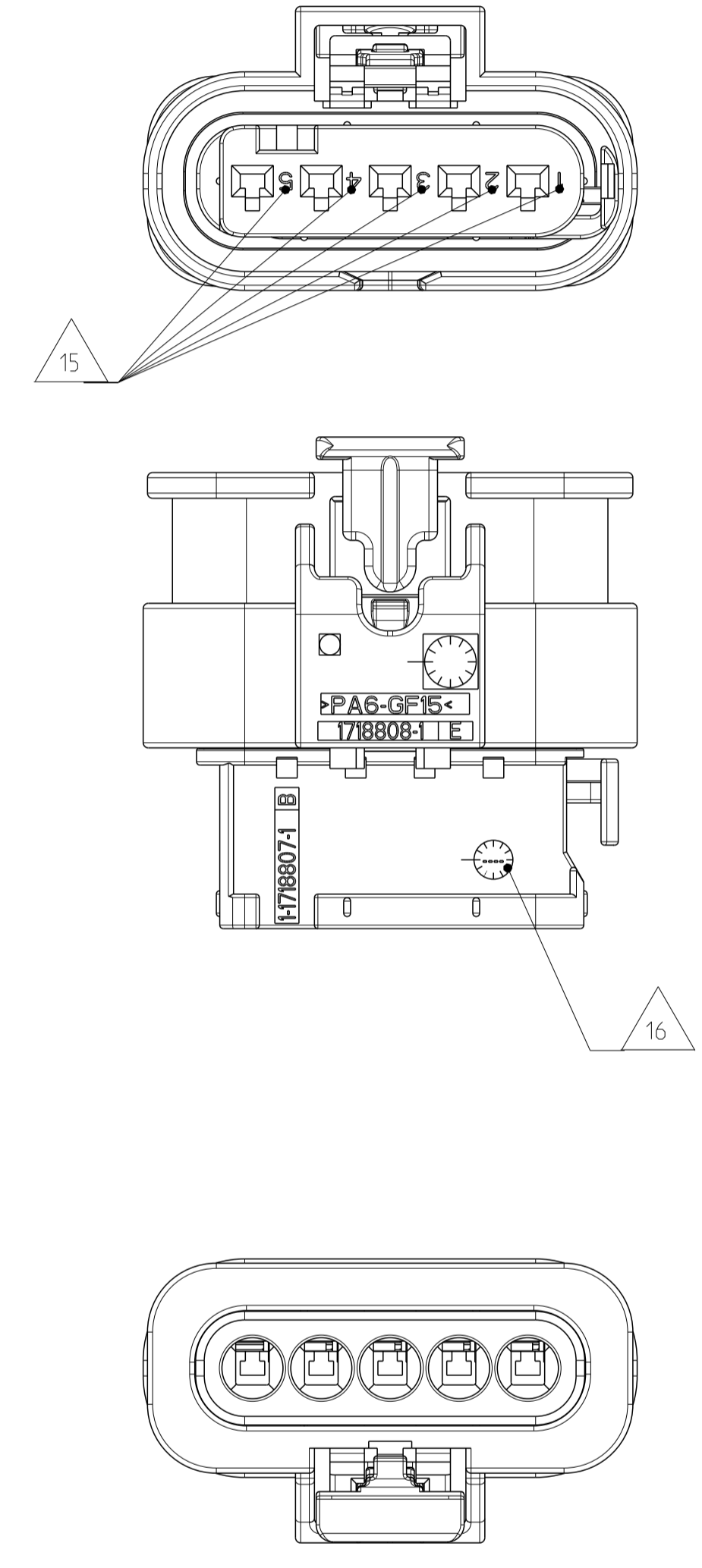
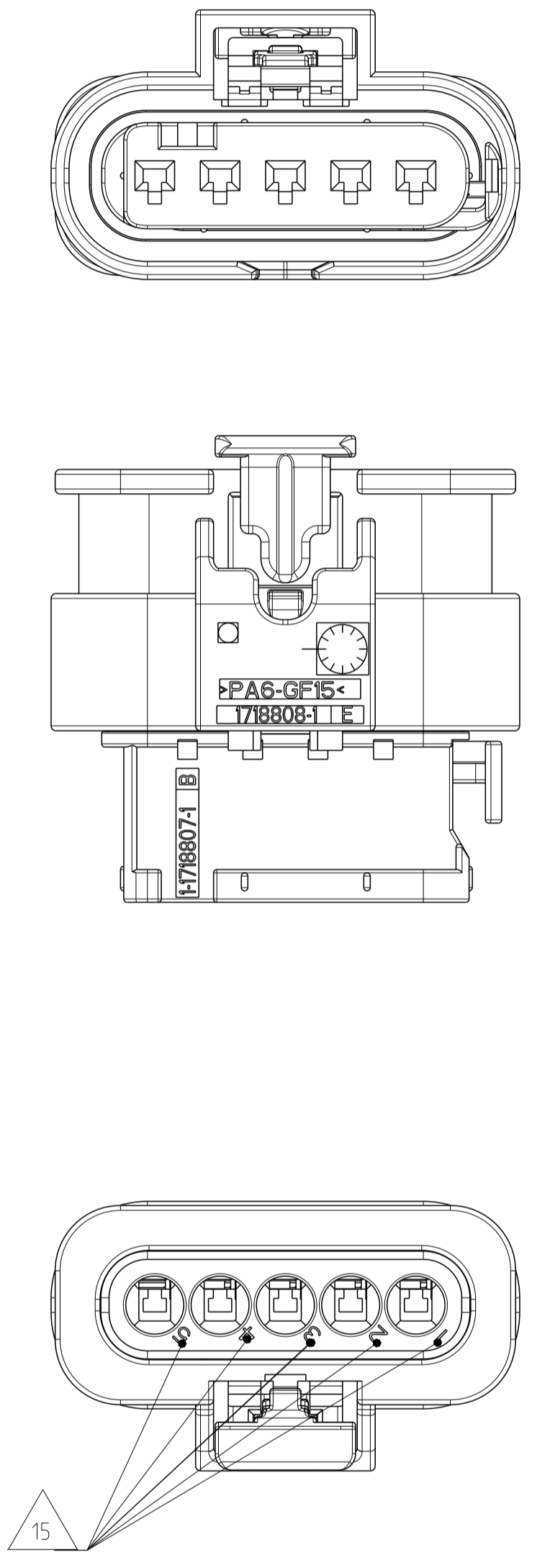
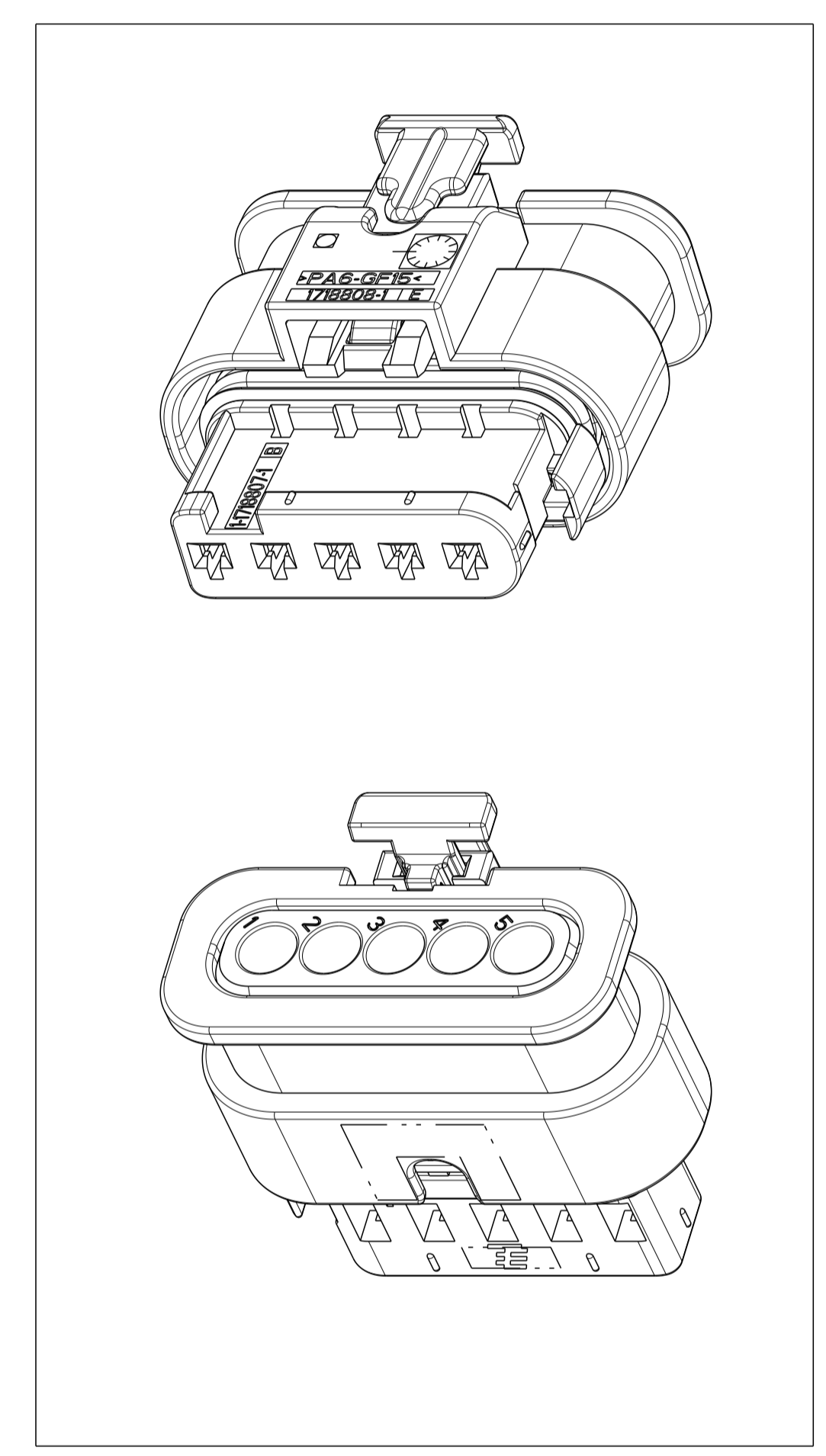
TOLERANCES UNLESS OTHERWISE SPECIFIED ACC. TO DIN 16901-140. CENTRIC TO NOMINAL DIMENSION. EDITION 1982-11 SHALL APPLY. Freimessstoleranzen nach DIN 16901-140. Es gilt die Ausgabe 1982-11.		THIS DRAWING IS A CONTROLLED DOCUMENT.		DWN: G. Roth CHK: A. Schraebel APVD:	09AUG2018 17FEB2005
DIMENSIONS: mm	TOLERANCES UNLESS OTHERWISE SPECIFIED	PRODUCT SPEC	APPLICATION SPEC	NAME	5pos. MCON 1.2 LL Connector, Sealed
0 PLC	±0.1	108-18969		SIZE	A1
1 PLC	±0.05			CAGE CODE	00779
2 PLC	±0.03			DRAWING NO	1718806
3 PLC	±0.013			RESTRICTED TO	
4 PLC	±0.01			SCALE	4:1
5 PLC	±0.0001			SHEET	1 OF 2
ANGLES				REV	E4
MATERIAL: TBD		WEIGHT		CUSTOMER DRAWING	

REVISIONS				
P.	LTN	DESCRIPTION	DATE	APVD
		SEE SHEET 1		

E3 Divergent marking for parts from various tools 3:1

Version 1

E3 Version 2



- E3** 15 Contact cavity marking
- 16 Date clock for inner housing

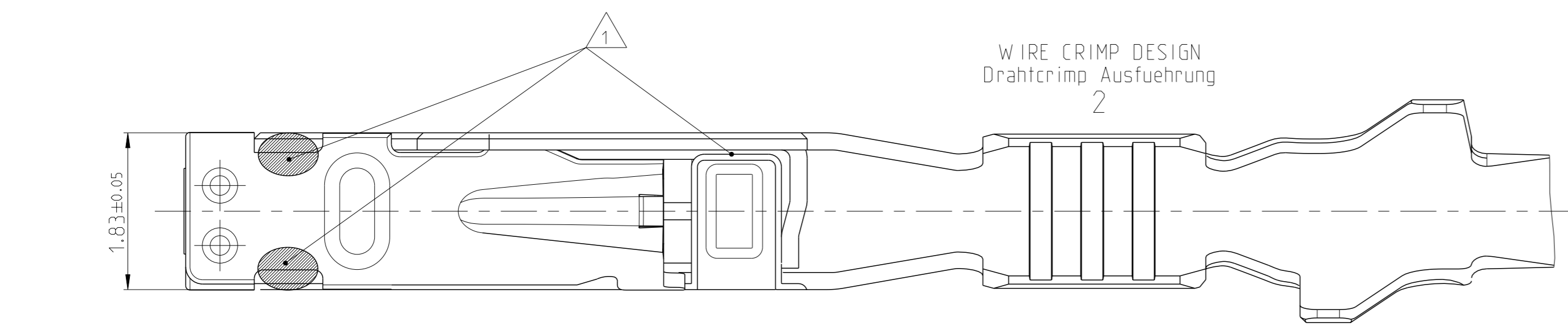
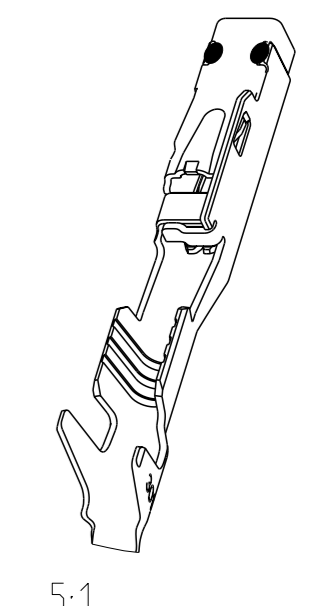
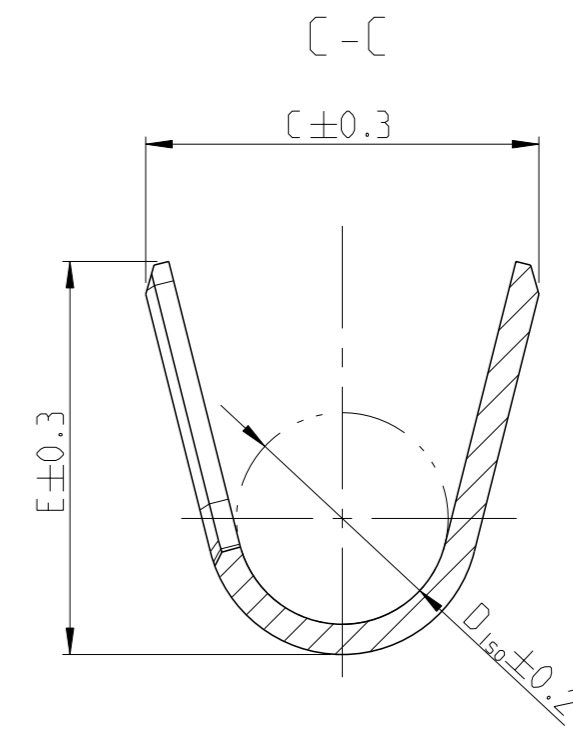
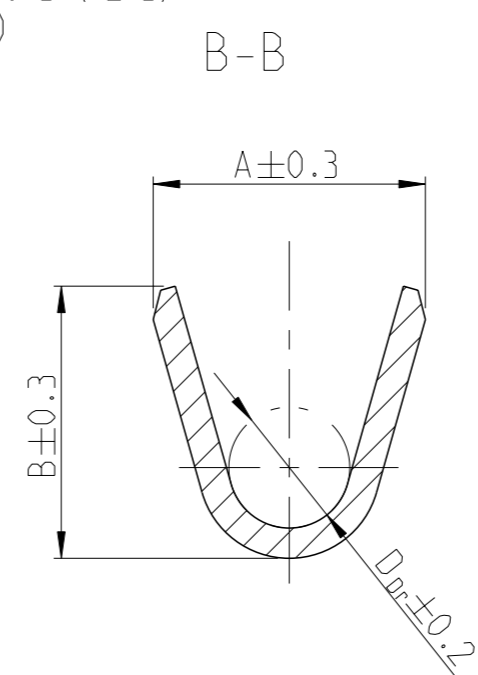
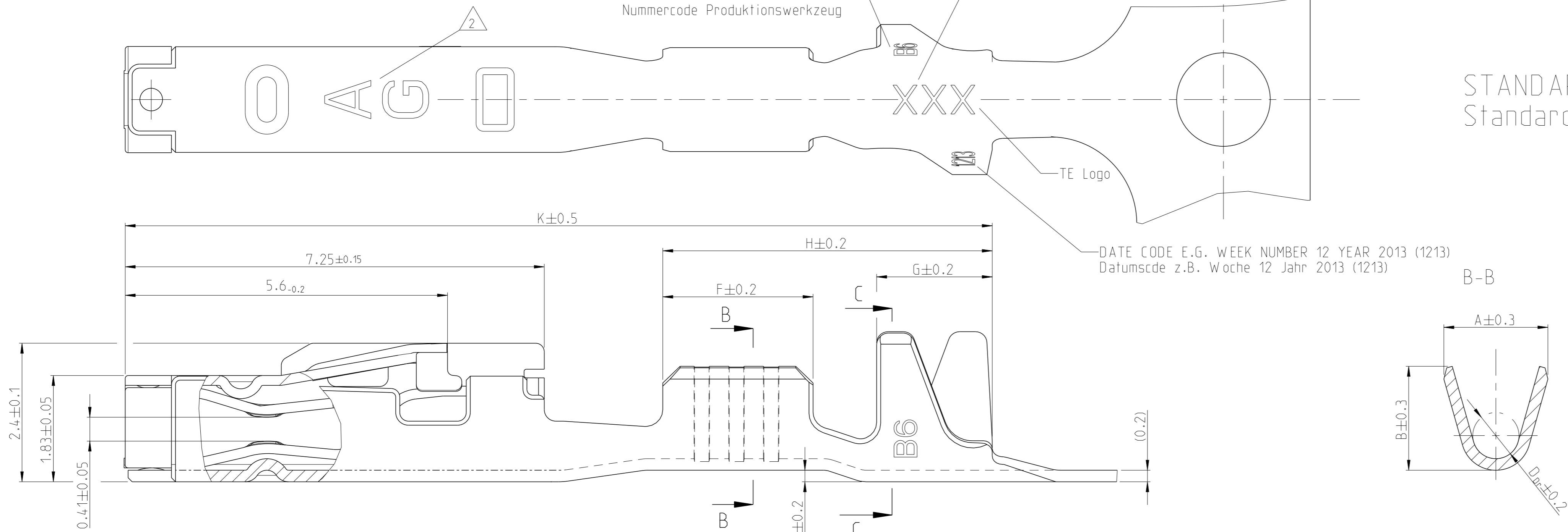
DIMENSIONS: mm		TOLERANCES UNLESS OTHERWISE SPECIFIED: 0 PLC ±0.5 1 PLC ±0.13 2 PLC ±0.075 3 PLC ±0.05 4 PLC ±0.025 ANGLES ±0.0001		THIS DRAWING IS A CONTROLLED DOCUMENT. DWN: G. Roth 17FEB2005 CHK: A. Schraebel 17FEB2005 APVD: -		NAME: 5pos. MCON 1.2 LL Connector, Sealed PRODUCT SPEC: - APPLICATION SPEC: -	
MATERIAL: TBD		FINISH: -		WEIGHT: -		SIZE: A1 CAGE CODE: 00779 DRAWING NO: C=1718806	
CUSTOMER DRAWING				SCALE: 4:1		SHEET: 2 OF 2	
						RESTRICTED TO: REV: 4	

Project No. PRJ-11-000001417	Loc A1	DIST -	REVISIONS			
#	CT#	DESCRIPTION	DATE	OWN	APVD	
C4		PN 2141861 and 2141970 active ECR-14-001724	06FEB2014	Abr	Raab	
C5		ECR-14-008680 CANCELED	12JUN2014	Abr	Raab	
C6		Name Changed to MCON 1.2 LL ECR-14-012725	25AUG2014	Abr	Raab	
C7		See PCN E-17-018644	21DEC2017	FRAN	KURF	

REVISION Aenderungsstand /
NUMBER CODE PRODUCTION TOOL
Nummercode Produktionswerkzeug

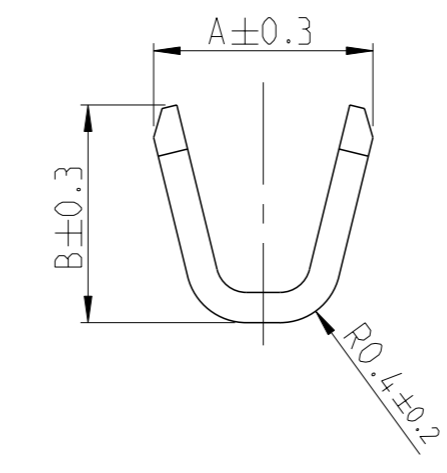
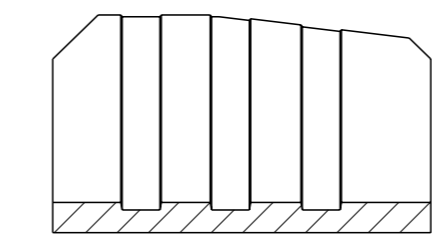
MANUFACTURING LOCATION CODE
Kennzahl Produktionsstandort

STANDARD APPLICATION
Standard Anwendung

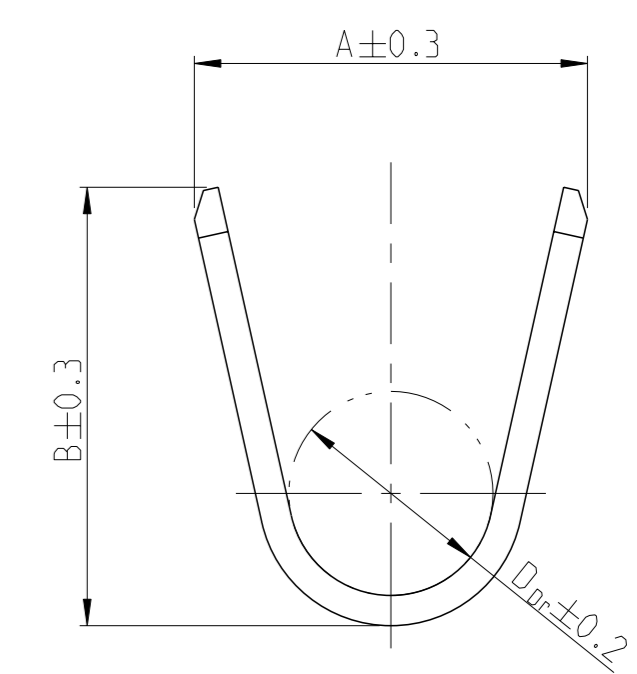
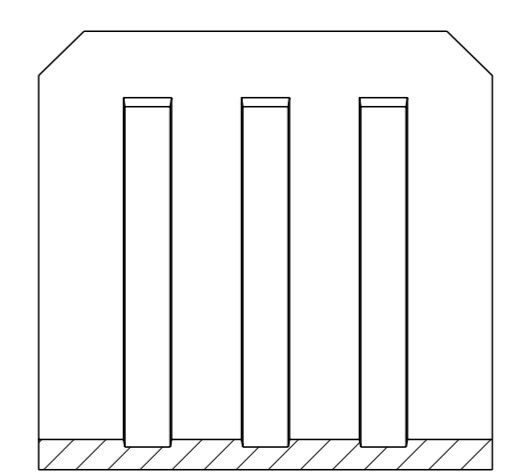


WIRE CRIMP DESIGN
Drahtcrimp Ausfuehrung
2

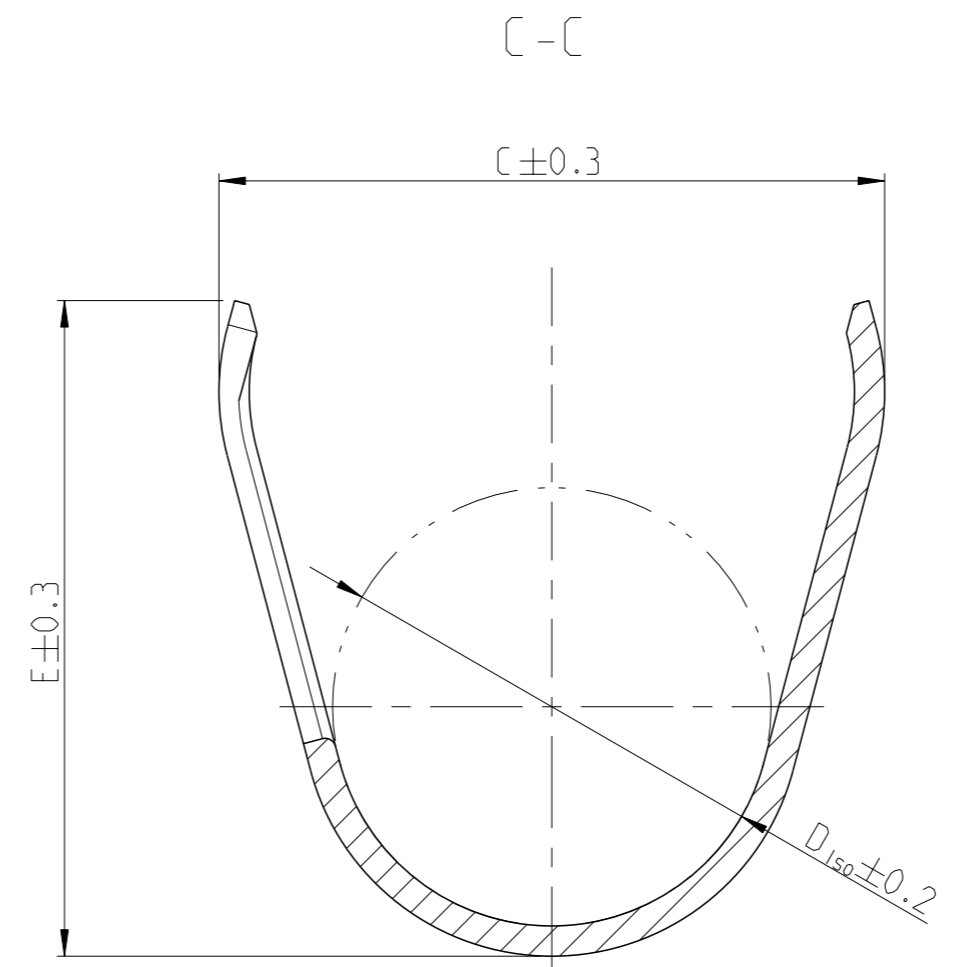
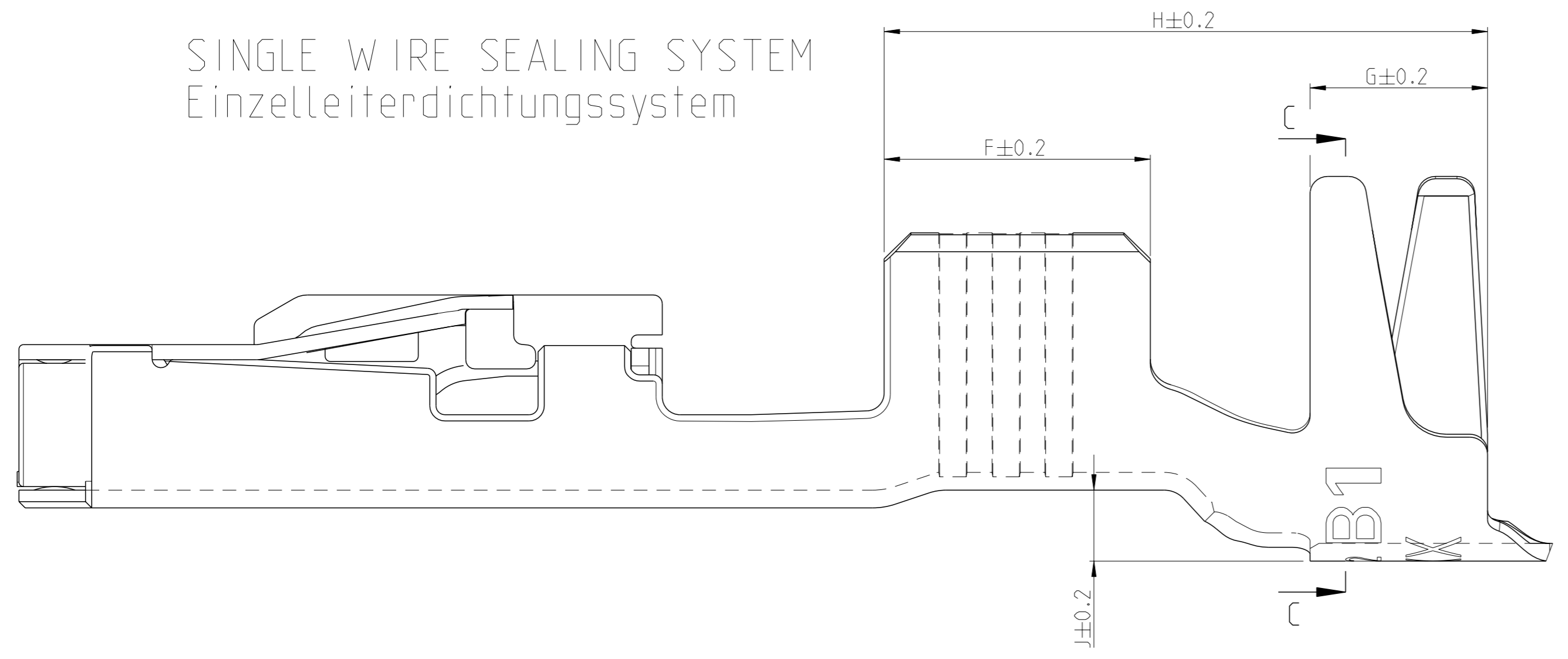
WIRE CRIMP DESIGN
Drahtcrimp Ausfuehrung
1



WIRE CRIMP DESIGN
Drahtcrimp Ausfuehrung
3



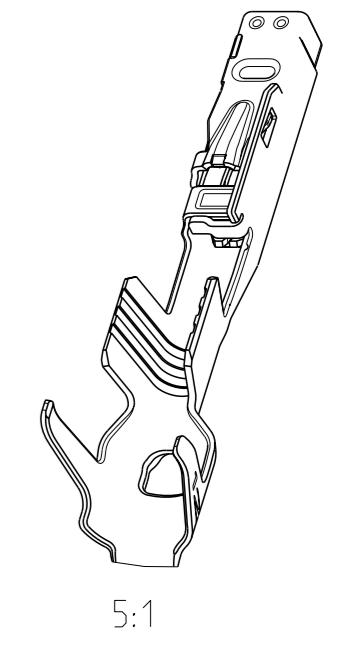
SINGLE WIRE SEALING SYSTEM
Einzelleiterdichtungssystem



NOTES
Bemerkungen

- 1 LASER WELDED
Lasergeschweisst
- 2 STAMPED INDICATOR FOR PLATING:
- AU GOLD PLATING
- AG SILVER PLATING
- TIN PLATING WITHOUT INDICATOR
Markierung fuer galvanische Ausfuehrung:
- AU vergoldet
- AG versilbert
- verzinkt: ohne Markierung

- 3 TO BE USED ON TAB
1.2±0.1 x 0.6±0.03 MM
geeignet fuer Flachstecker
1.2±0.1 x 0.6±0.03 mm



THIS DRAWING IS A CONTROLLED DOCUMENT.		OWN E. Horn	11NOV2011		TE Connectivity
DIMENSIONS: mm		CHK R. Meier	11NOV2011		NAME MCON 1.2 LL (LOCKING-LANCE)
TOLERANCES UNLESS OTHERWISE SPECIFIED: ±0.2		APVD V. Seigel	11NOV2011	SIZE 108-18782	RESTRICTED TO
MATERIAL		FINISH		APPLICATION SPEC 114-18464	SCALE 20:1
WEIGHT 0.18 g		Customer Drawing		114-18464	SHEET 1 OF 2
Customer Drawing		SCALE 20:1		REV 7	

LOC	DIST	REVISIONS			
A1	-	REV	DATE	OWN	APVD
		1	SEE SHEET 1	-	-

VERSION / Ausführung	REV.	RANGE Bereich	INSULATION-Ø Isolations-Ø (mm)	AWG	mm ²	BODY Kontakt-körper	SPRING Kontakt-feder	BODY Kontakt-körper	SPRING Kontakt-feder	DESIGN WIRE-CRIMP Ausführung Draht-Crimp	WIRE CRIMP Drahtcrimp					INSULATION CRIMP Isolationscrimp					F	G	H	J	K	SINGLE WIRE SEAL FOR CAVITY DIAMETER	BLINDPLUG ORDER NO. Blindstopfen Bestell-Nr.	APPLICATION TOOLS Verarbeitungswerkzeuge
											A	B	D _{Dr}	C	E	D _{ISO}	A	B	C	E								
C7																												
SEE APPLICATION SPEC. 114-18464 siehe Verarbeitungsspez. 114-18464																												

7- VARIANTS FOR NEW APPLICATIONS

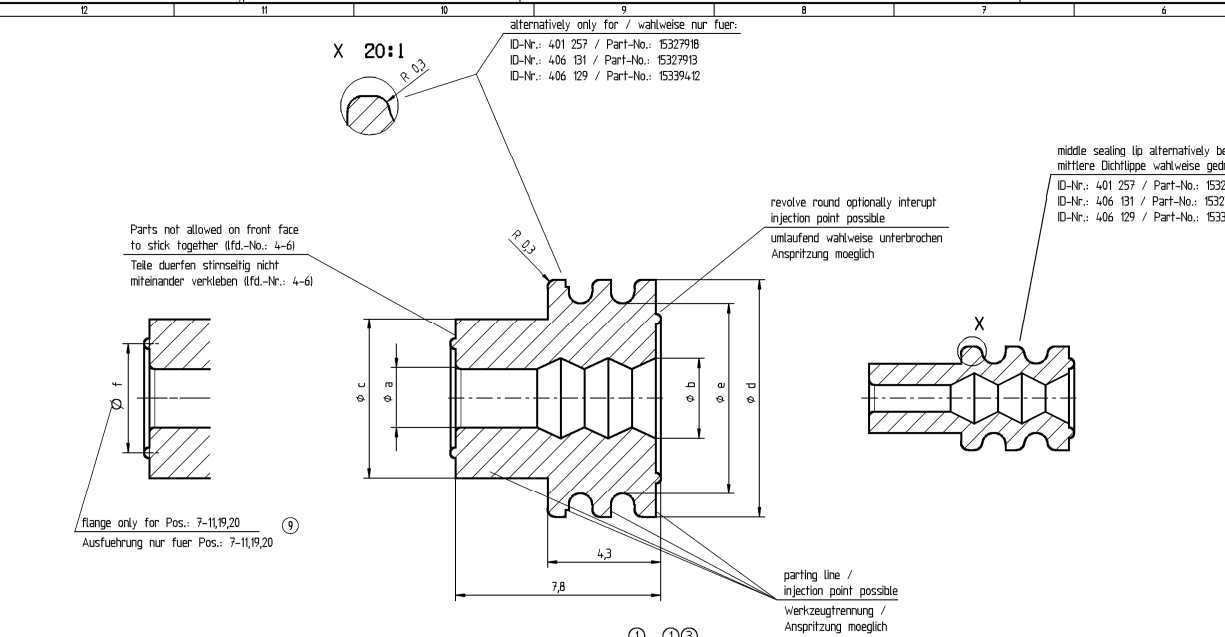
- NOTES
Bemerkungen
- 4 ONLY FOR FLR-WIRE SEE DIN 72551, PART 6 AND AWG WIRE ACCORDING DC-SPEC: MS-8288 ; MS-7889 ; MS-9532
Nur fuer FLR-Leitung nach DIN 72551, Teil 6 und AWG Leitung nach DC-SPEC: MS-8288 ; MS-7889 ; MS-9532
 - 5 PRE TIN SnAg 1.0 TO 3.0µm
Vorverzinkt SnAg 1.0 bis 3.0µm
 - 6 SPRING GOLD PLATED MIN. 0.8µm (only contact area)
Kontaktfeder galv. vergoldet min.0.8µm (nur Kontaktzone)
 - 7 SPRING SILVER PLATED 2.0 TO 5.0µm (only contact area)
Kontaktfeder galv. versilbert 2.0 bis 5.0µm (nur Kontaktzone)
 - 8 BODY PRE TIN Sn 1.0 TO 3.0µm
Kontaktkoerper vorverzinkt Sn 1.0 bis 3.0µm
 - 9 REINFORCED WIRE ACCORDING TO LV 112-4
Zugverstaerkte Leitung nach LV 112-4

VERSION / Ausführung	REV.	RANGE Bereich	INSULATION-Ø Isolations-Ø (mm)	AWG	mm ²	BODY Kontakt-körper	SPRING Kontakt-feder	BODY Kontakt-körper	SPRING Kontakt-feder	DESIGN WIRE-CRIMP Ausführung Draht-Crimp	WIRE CRIMP Drahtcrimp					INSULATION CRIMP Isolationscrimp					F	G	H	J	K	Ø3.55 [mm]	Ø3.95 [mm]	BLINDPLUG ORDER NO. Blindstopfen Bestell-Nr.	APPLICATION TOOLS Verarbeitungswerkzeuge
											A	B	D _{Dr}	C	E	D _{ISO}	A	B	C	E									
0- VARIANTS SUPERSEDED BY 7- VARIANTS (SEE TABLE ON TOP)																													
SEE APPLICATION SPEC. 114-18464 siehe Verarbeitungsspez. 114-18464																													

0- VARIANTS SUPERSEDED BY 7- VARIANTS (SEE TABLE ON TOP)

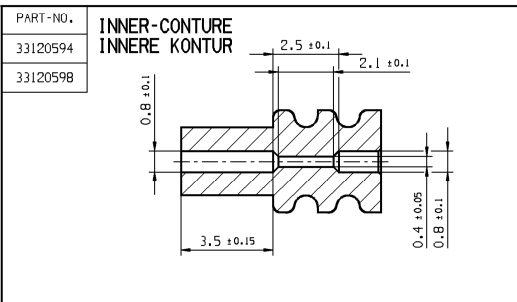
THIS DRAWING IS A CONTROLLED DOCUMENT.

OWN: E. Horn	11NOV2011	STE TE Connectivity
CHK: R. Meier	11NOV2011	
APVD: V. Seigel	11NOV2011	
PRODUCT SPEC		
DIMENSIONS: mm		TOLERANCES UNLESS OTHERWISE SPECIFIED:
		±0.2
MATERIAL: -		FINISH: -
NAME: MCON 1.2 LL (LOCKING-LANCE)		SIZE: A1
APPLICATION SPEC: 108-18782		CAGE CODE: 00779
DRAWING NO: 114-18464		DRAWING NO: C=1452674
WEIGHT: -		RESTRICTED TO: -
Customer Drawing		SCALE: - SHEET: 2 OF 2 REV: C7



Zone	DWG Status	REV IN/PCDE	Revision history	Date	Name	Check	St. GH
01			Initial release Freigebe	16.JUN00	U.Tor.	J.Moch	R.Wis.
D12	01	AA	Part-Nr. 403 960 and Part-No. 072074 deleted Part-Nr. 697 990 and Part-No. 072074 corrected	05DEC02	Frimm	Cvasa	R.Wis.
C12	01	AB	Part-Nr. 608 447 and Part-No. 076347 deleted Part-Nr. 698 497 and Part-No. 076347 corrected	05DEC02	Frimm	Cvasa	R.Wis.
B12	01	AC	Cable Ø 2,8-3,8 was 2,8-2,9 Liftung Ø 2,8-3,8 var 2,2-2,9	05DEC02	Frimm	Cvasa	R.Wis.
C9	01	AD	Cable Ø 17-21 was 17-21 Liftung Ø 17-21 var 17-21	17DEC03	Frimm	Cvasa	R.Wis.
C11	02		Part-No. 072090 added Part-No. 072090 Minus	18MY04	Frimm	Cvasa	R.Wis.
C11	03		Part-No. 050872 added Part-No. 050872 Minus	25OC04	Frimm	Cvasa	R.Wis.
C9	03	AA	Cable Ø 19-21 was 17-21 Liftung Ø 19-21 var 17-21				
C/D11	AB		Part-REV / Date corrected Part-REV / Datum korrigiert	24MY05	Frimm	Cvasa	R.Wis.
C/D11	03	AC	Part-No. 052708 Rev 02 01000 var 33 02187 Part-No. 052708 Rev 02 01000 var 33 02187	23AUG05	Frimm	Cvasa	R.Wis.
D6-12	04		Part-No. 054461, 054462 added Part-No. 054461, 054462 Minus				
B4	AA		Remark No. 1 added Bemerkung Nr. 1 Minus	30ESE05	Frimm	Cvasa	R.Wis.
D6-12	05		Part-No. 052646 added Part-No. 052646 Minus	16MY06	Frimm	Cvasa	R.Wis.
C7	06		Green var added Part-No. 053644 Green var Minus Part-No. 053644	27JUL06	Frimm	Cvasa	R.Wis.
A9	06	AA	Cable 2,8-3,8 was 2,8-2,9 Part-No. 052708A Cable 2,8-3,8 var 2,8-2,9 Part-No. 052708A	06OC06	Frimm	Cvasa	R.Wis.
A9	06	AB	Cable 2,8-3,8 was 2,8-2,9 Part-No. 052708A Cable 2,8-3,8 var 2,8-2,9 Part-No. 052708A	08NO06	Frimm	Cvasa	R.Wis.
A-D9	06	AC	Pos-Numbering changed according to D-drawing Pos-Nummerierung an D-Zeichnung angepasst	26JAO7	Frimm	Cvasa	P.Les.
C-A6	07		Part 075244, 075240, 075235, 075237 added Teile 075244, 075240, 075235, 075237 Minus	15OC08	W.Szo	Frimm	K.PH
D12	08		Part-No. 054461, 054462, 054463 deleted Teile-Nr. 054461, 054462, 054463 entfernt	09DEC09	V.Kas	J.Saf	SYS
C8	08	AA	Cable cross section for Part-No. 0539412 changed Kabelquerschnitt fuer Teil-Nr. 0539412 geaendert	01OC13	K.Wir.	T.Plin	SYS
E12	09		Part 310294 and 310298 added Teile 310294 und 310298 Minus	31OC13	A.HHG	A.URB	SYS
FB	09	AA	DM 16 F00V2 MSS 16 ENTERT	30JUN14	A.HHG	A.URB	SYS
	09	AB	DRNs corrected in BOM DRNs korrigiert in Stückliste	30AP15	V.KAS	K.STO	SYS
	09	AC	RAL 107 WAS RAL 106 INFITING ERROR RAL 107 WAS RAL 106 SCHWELDTALER	28JUN16	V.KAS	K.STO	SYS
E7	09	AD	SH RAL ADD04/010	13JUL16	R.MDL	V.KAS	SYS
F11	09	AE	POSITION 16 AND 18 ADDED / POSITIONEN 16 UND 18 HINZUGEFUEGT	10AUG16	P.SCH	E.OSW	SYS
C8	09	AF	CABLE DIAMETER CHANGED - WHITE ERROR KABELDIAMETER GEANDERT - SCHWELDTALER	09JAN17	P.SCH	V.KAS	SYS
A-B6	09	AG	CABLE DIAM FROM MAX. 2,9 TO 2,7 CORRECTED KABELDIAM. VON MAX. 2,9 ZU 2,7 KORRIGIERT	20JUL17	V.KAS	T.BOL	SYS
B9	09	AH	CABLE DIAM FROM MAX. 2,9 TO 3 CORRECTED KABELDIAM. VON MAX. 2,9 ZU 3 KORRIGIERT	05OC18	T.MAZ	V.KAS	SYS

Loose / Lose				Put on the belt / geputert				Pos.	Cbl.Ø Ltg.φ	Cable cross-section mm ² altern. Leitungsquerschnitt mm ² wahlw.		Color Farbe	SIM RAL	Dimension φ Mass φ					
ID-Nr.:	Part-No.:	Part REV	Date Datum	ID-Nr.:	Part-No.:	Part- REV	Date Datum			FLY	FLRY			ax0,1	bx0,2	cx0,2	dx0,1	e ^{+0,1} -0,2	fs0,2
Seal for female-terminal 1,5 mm and tab-terminal 1,5 mm Dichtung fuer Flachsteckhuelse 1,5 mm und Flachstecker 1,5 mm																			
---	33120594	01	31OC13	---	---	---	---	0,8-12	0,08-0,13	black schwarz	9011	---	---	2,6	3,9	2,6	---		
406 131	1532791B	42	13JUN00	---	---	---	2	12-16	0,35-0,5	wine red weinrot	3027	0,8	1,4	2,6	3,9	2,6	---		
401 257	1532791B	42	13JUN00	401 258	15344666	42	13JUN00	1	12-2,0	yellow gelb	1016	0,8	1,4	2,6	3,9	2,6	---		
---	15344778	37	05MY99	---	---	---	12	1,4-2,0	0,5-1,0	gray grau	7000	1,0	1,9	2,6	3,9	2,6	---		
406 129	15339412	42	13JUN00	---	---	---	3	1,9-2,1	0,75-1,5	maize maisgelb	1007	1,5	1,9	2,6	3,9	2,6	---		
---	13735535	01	15OC08	---	---	01	15OC08	21	12-2,0	yellow gelb	1016	1,0	1,9	2,6	3,9	2,6	---		
---	13735527	01	15OC08	---	---	01	15OC08	22	12-2,0	green gruen	6010	1,0	1,9	2,6	3,9	2,6	---		
Seal for female-terminal 2,8 mm and tab-terminal 2,8 mm Dichtung fuer Flachsteckhuelse 2,8 mm und Flachstecker 2,8 mm																			
---	33120598	01	31OC13	---	---	---	---	0,8-12	0,08-0,13	wine red weinrot	3027	---	---	3,4	5,65	4,5	---		
401 199	15327860	42	13JUN00	401 198	10718144	42	13JUN00	4	12-2,0	blue blau	5010	0,8	1,6	3,4	5,65	4,5	---		
---	15498732	01	25OC04	---	---	---	15	12-2,0	0,35	gray grau	7000	0,8	1,6	3,4	5,65	4,5	---		
404 924	10720901	01	18MY04	---	---	---	14	12-2,0	0,35	orange orange	2004	0,8	1,6	3,4	5,65	4,5	---		
401 187	15327863	42	13JUN00	401 188	15344643	42	13JUN00	5	2,0-2,7	red / brown rot / braun	3011	1,6	2,2	3,4	5,65	4,5	---		
401 259	15327859	42	13JUN00	401 260	10720641	42	13JUN00	6	2,7-3	maize maisgelb	1007	2,2	3,0	3,4	5,65	4,5	---		
Seal for female-terminal 4,8 mm and tab-terminal 4,8 mm Dichtung fuer Flachsteckhuelse 4,8 mm und Flachstecker 4,8 mm																			
401 201	15363779	42	13JUN00	401 200	15344644	42	13JUN00	7	12-2,0	yellow gelb	1016	0,8	1,6	6,0	9,0	7,2	3,4		
401 203	15363604	42	13JUN00	401 202	15344645	42	13JUN00	8	2,0-2,7	white weiss	9010	1,6	2,2	6,0	9,0	7,2	3,7		
401 205	15327864	42	13JUN00	401 204	15337204	42	13JUN00	9	2,7-3,8	red / brown rot / braun	3011	2,2	3,0	6,0	9,0	7,2	4,1		
401 208	15363605	42	13JUN00	401 207	15344646	42	13JUN00	10	4,0-4,5	green gruen	6010	3,2	3,9	6,0	9,0	7,2	4,6		
401 210	15344647	42	13JUN00	401 209	15344404	42	13JUN00	11	4,7-5,3	gray grau	7000	3,8	4,8	6,5	9,0	7,2	5,15		
---	13735454	01	15OC08	---	---	01	15OC08	19	2,7-3,8	blue blau	5010	2,2	3,0	6,0	9,0	7,2	4,1		
---	13735480	01	15OC08	---	---	01	15OC08	20	2,7-3,8	green gruen	6010	2,2	3,0	6,0	9,0	7,2	4,1		



PART-NO.
33120594
33120598

**INNER-CONTOUR
INNERE KONTUR**

Remarks :
 - Material: Silicone, self-lubricated,
 Tensile strength: Rm min. 6,2 Nm/mm²
 Gap argumentation > 375% DIN 53 504-52
 ozoneresistent, heatresistant -40 to +180°C
 gauged on testboard

Bemerkungen :
 - Werkstoff: Silikon, selbstschmierend,
 Zugfestigkeit: Rm min. 6,2 Nm/mm²
 Reissdehnung > 375% DIN 53 504-52
 ozonestaendig, temperaturbestaendig -40 bis +180°C
 gemessen an Pruefplatten

Scale/Verst. 1:1
 Scale/Verst. 5:1

DELPHI
 D - 4219 WUPPERTAL

Part No. see chart / siehe Tabelle
 Part No. see drawing / siehe Zeichnung

Übersicht ohne Maßstab
 This drawing
 Scale/Verst. 1:1

Scale/Verst. 5:1

DELPHI
 D - 4219 WUPPERTAL

Project/Proj. 6501.1713/003
 Date/Termin 16JUN00
 Drawn/Gezeichnet J.Moch
 Checked/Geprüft R.Wis.

Scale/Verst. 10:1
 Einzellandr. dichtung
 Scale/Verst. 1:1; 5:1

Drawing - No. 15446589
 Format A1

DELPHI
D - 4219 WUPPERTAL

DELPHI
D - 4219 WUPPERTAL