

# M 1337245-3C



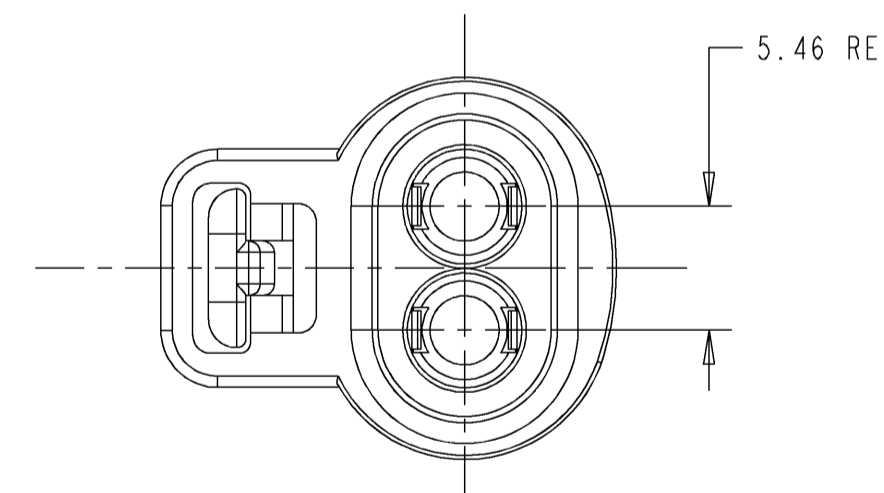
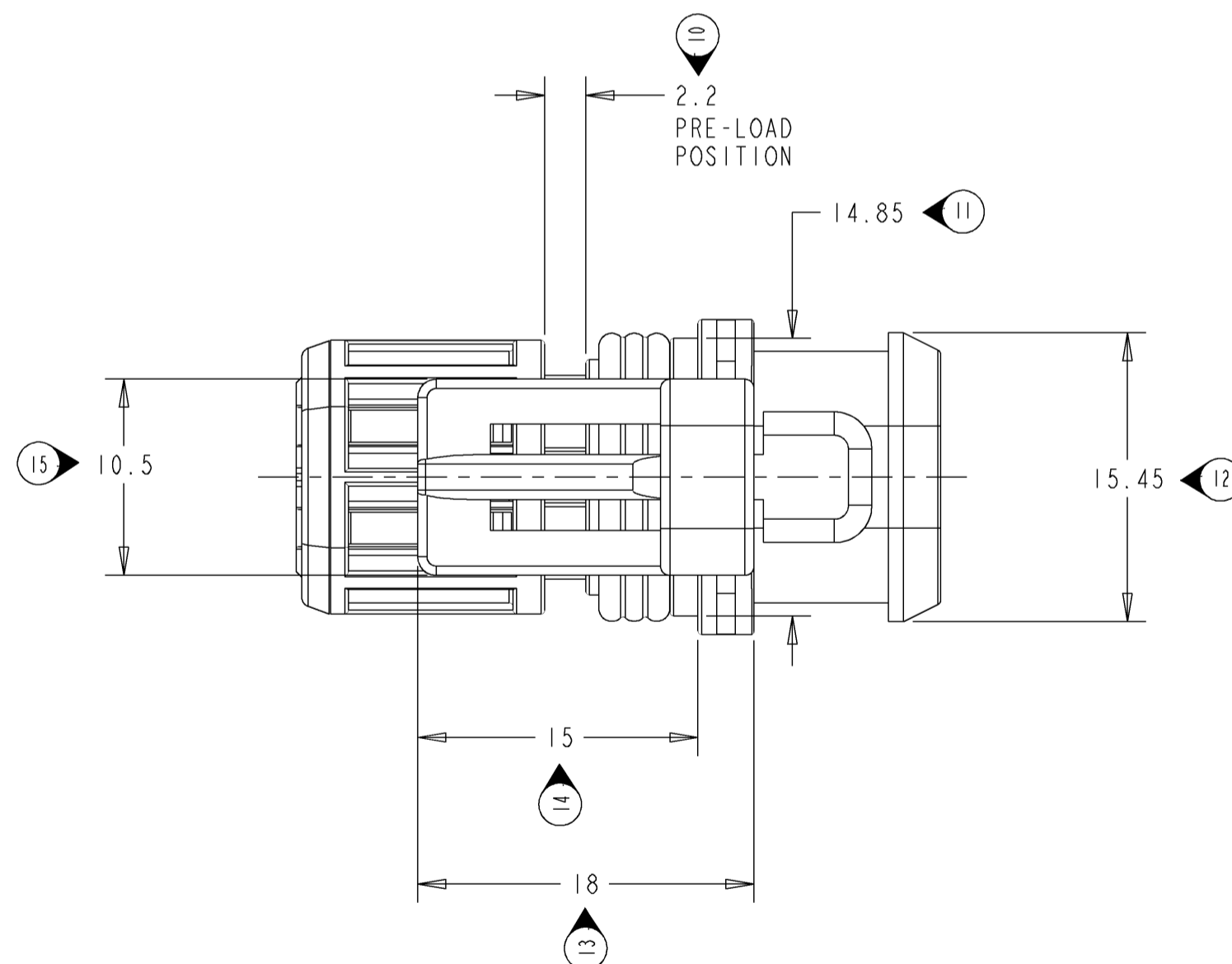
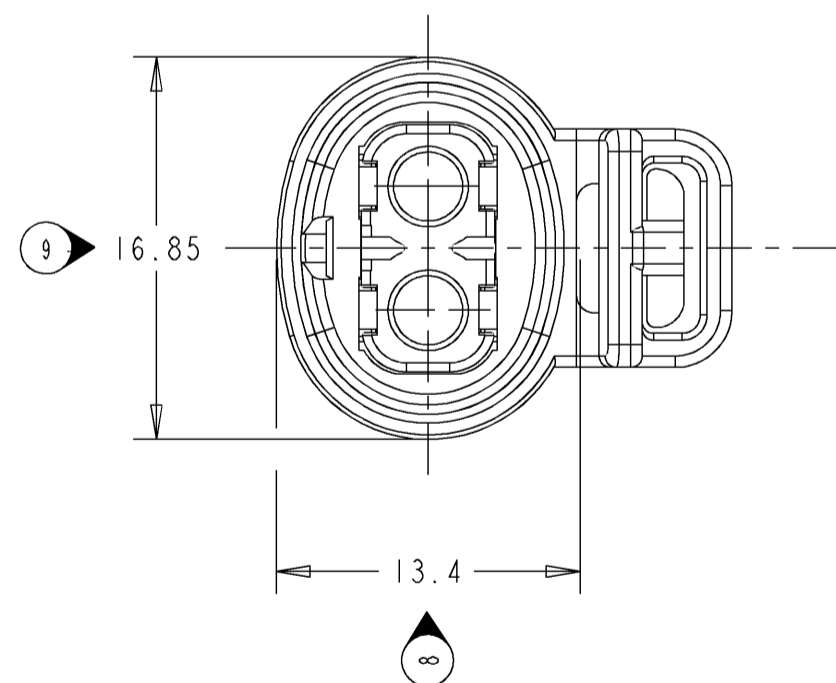
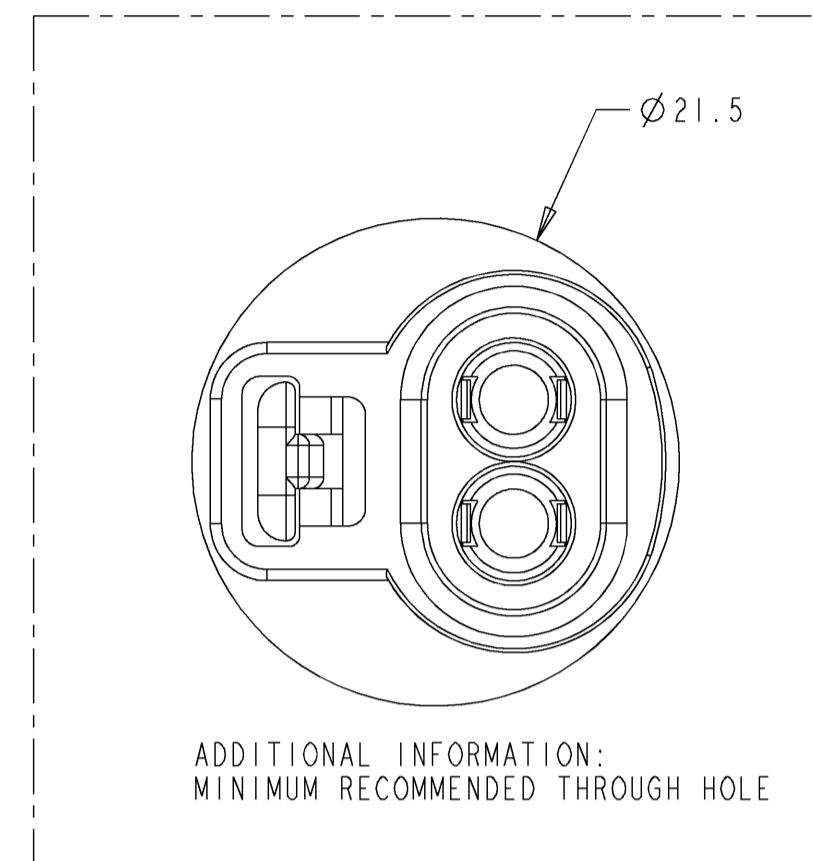
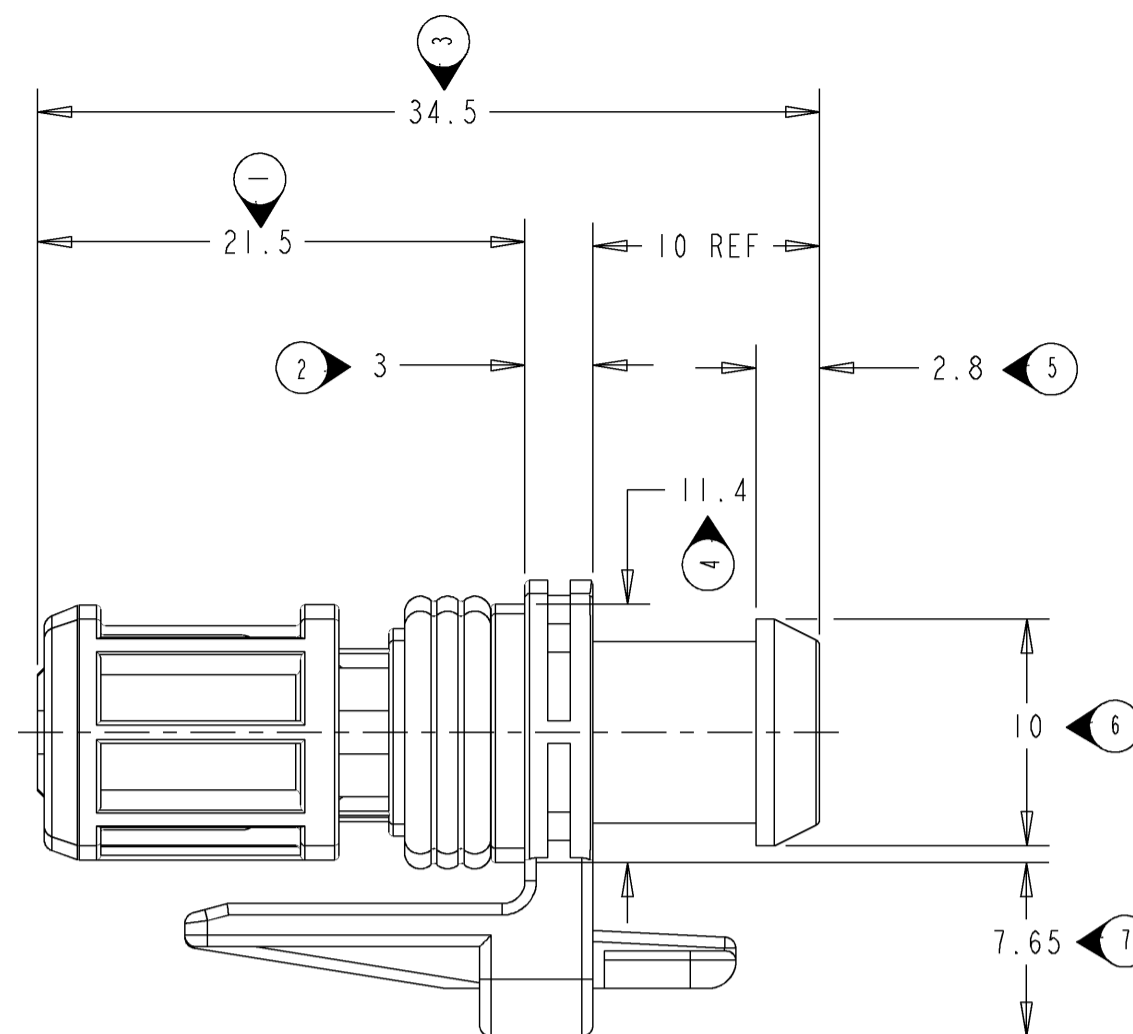
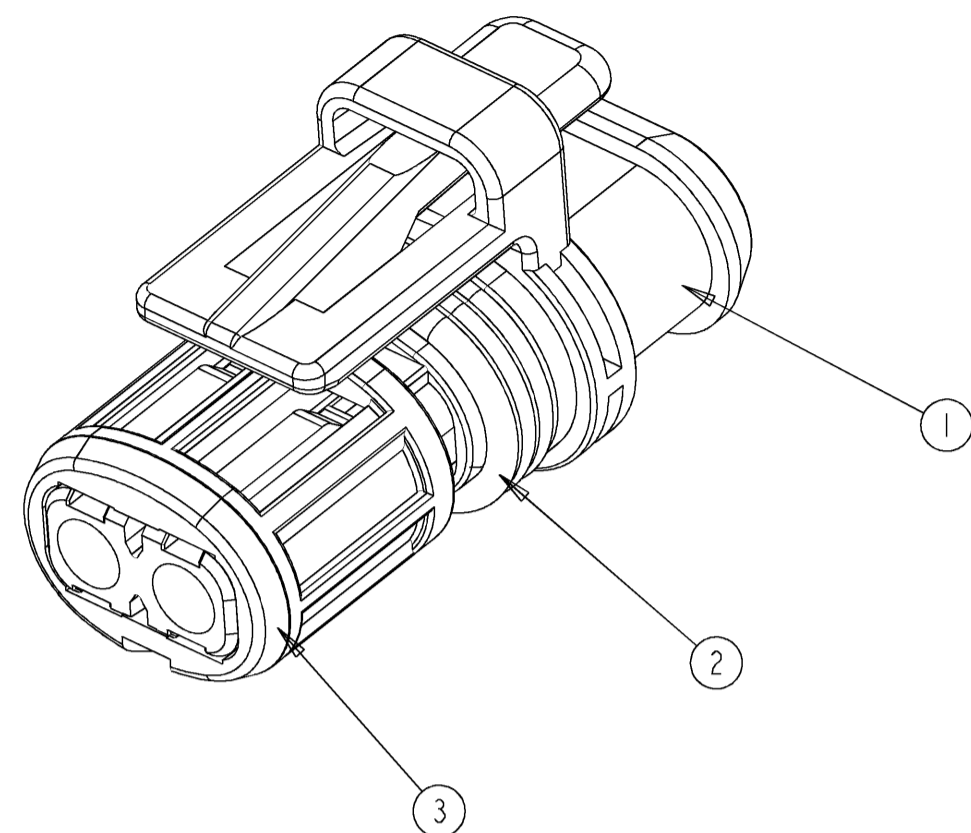
MINIKIT

*Proseguire nella pagina successiva per visualizzare la scheda tecnica dei componenti*

Revisione	Prodotto
REV.00 10/04/2026	OEM

THIS DRAWING IS UNPUBLISHED. RELEASED FOR PUBLICATION 2009  
 © COPYRIGHT 2009 BY TYCO ELECTRONICS CORPORATION. ALL INTERNATIONAL RIGHTS RESERVED.

LOC	DIST	REVISIONS			
P	LTR	DESCRIPTION	DATE	DWN	APVD
	O	EB00-0537-00	30NOV2000	RJC	MJW
	A	EB00-0191-01	29MAY2001	RJC	MJW
	B	EB00-0084-02	5MAR2002	MJH	RB
	C	ECR-06-007815	29MAR2006	MJH	RB
	CI	ECR-09-025091	16NOV2009	ABS	MH



NOTES:

1. FOR USE WITH CONTACT SYSTEM Ø1.5MM SOCKET: PART No. 929988 / 929989 / 929990 / 1-1719188-0  
 PART No. 1-1719188-0 IS A HIGH NORMAL FORCE CONTACT FOR USE ON HIGH VIBRATION APPLICATIONS (FUEL INJECTORS)

REFER TO CONTACT APPLICATION SPECIFICATION 114-18040-1 FOR WIRE SIZE & INSULATION DIAMETER SIZE DETAILS.

2. MATING INTERFACE DETAILS: 114-3223

THIS DRAWING IS A CONTROLLED DOCUMENT FOR TYCO ELECTRONICS CORPORATION. IT IS SUBJECT TO CHANGE AND THE CONTROLLING ENGINEERING ORGANIZATION SHOULD BE CONTACTED FOR THE LATEST REVISION.

DIMENSIONS:	TOLERANCES UNLESS OTHERWISE SPECIFIED:
mm	0 PLC ±
	1 PLC ±
	2 PLC ±
	3 PLC ±
	4 PLC ±
	ANGLES ±°
MATERIAL	FINISH

RED	NYLON 6.6 13% G.F.	SECONDARY LOCK	3	1337245-3
GREEN	FLOUROCARBON, SILICON OIL COATED	SEAL	2	
BLACK	NYLON 6.6 13% G.F.	HOUSING	1	
COLOUR	MATERIAL	ITEM	PART NUMBER	
MADE FROM				
DWN	D.R.TERRY	4MAY2000	Tyco Electronics UK Ltd Stanmore, Middlesex, HA7 4RS	
CHK	R.CHALLIS	28MAR2000		
APVD	M.WHELAN	29MAR2000		
PRODUCT SPEC	108-3428-1	NAME: 2 POSITION 1.5mm SOCKET		
APPLICATION SPEC	114-3219	RECEPTACLE CONNECTOR ASSY.		
WEIGHT	-	SIZE	CAGE CODE	DRAWING NO
		A2	00779	1337245
CUSTOMER DRAWING	SCALE	3:1	SHEET	1 OF 1
				REV C1

REVISIONS					
#	DATE	DESCRIPTION	DATE	OWN	APPROV
M9	14APR2011	REVISED PER ECO-11-005150	14APR2011	RK	HMR
M10	01JUN2011	Swage in insulation area section C-C corrected.	01JUN2011	Kirs.	Merz
M11	17JUN2016	929990-4 SUPERSEDED BY 929990-1	17JUN2016	JJH	MC
M12	22APR2022	DIAMETER SYMBOLS ADDED	22APR2022	JS	CASS

1 PRE TINNED  
vorverzinkt 1-2 µm

2 FINISH: ELECTROPLATED SILVER  
Oberfläche: galvanisch versilbert

ZONE "A": MIN 1-3 µm Ag  
min 1-3 µm Ag

ZONE "B": MIN 1-3 µm ELECTROPLATED SN  
min 1-3 µm galvanisch Sn

REST: SILVER OR TIN ALLOWED. IN TRANSITION AREAS  
OVERLAPPING LAYER OR PLAIN SURFACES ARE NOT ALLOWED.  
Silber oder Zinn erlaubt. Im Übergangsbereich sind keine  
ueberlappenden Schichten oder blanke Stellen erlaubt.

3 PLAIN  
blank

4 FINISH: ROLL-CLAD GOLD  
Oberfläche: walzplattiert Gold

ZONE "A": MIN 1.2 µm AuNi5 OVER 10±2 µm Ni INTERFACE LAYER  
min 1.2 µm AuNi5 ueber 10±2 µm Zwischenschicht

REST: MIN. 1-2 µm ELECTROPLATED Sn  
min. 1-2 µm galvanisch Sn

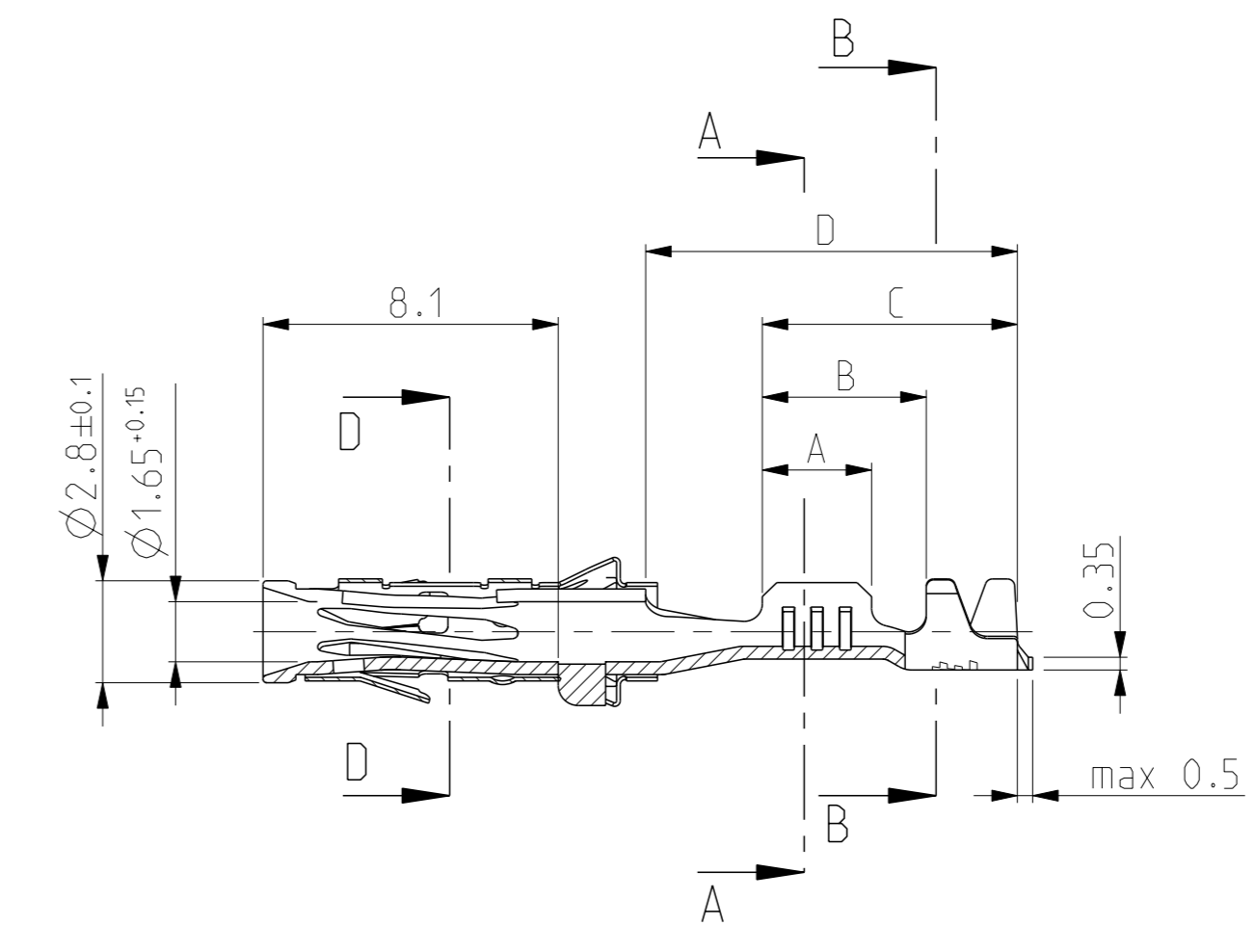
5 FINISH: ELECTROPLATED GOLD  
Oberfläche: galvanisch vergoldet

ZONE "A": MIN 0.8 µm ELECTROPLATED Au OVER MIN 1.3 µm ELECTROPLATED Ni LAYER  
AT CONTACT AREA  
min 0.8 µm galvanisch Au ueber min 1.3 µm galvanisch Ni Zwischenschicht  
im Kontaktbereich

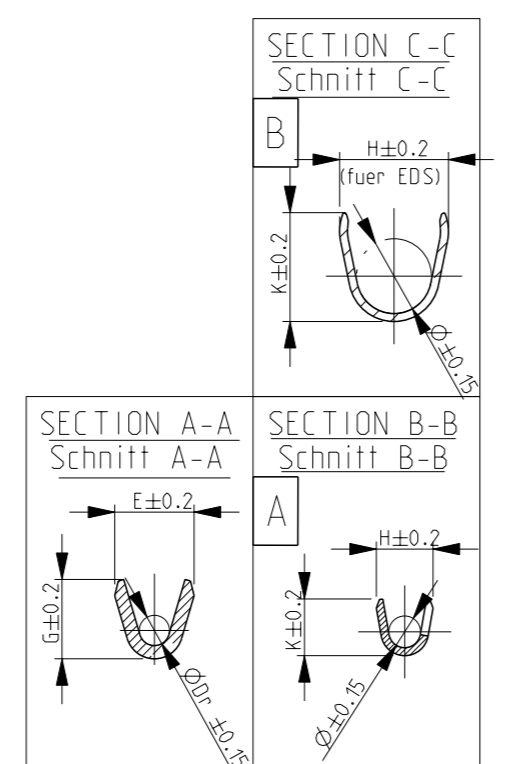
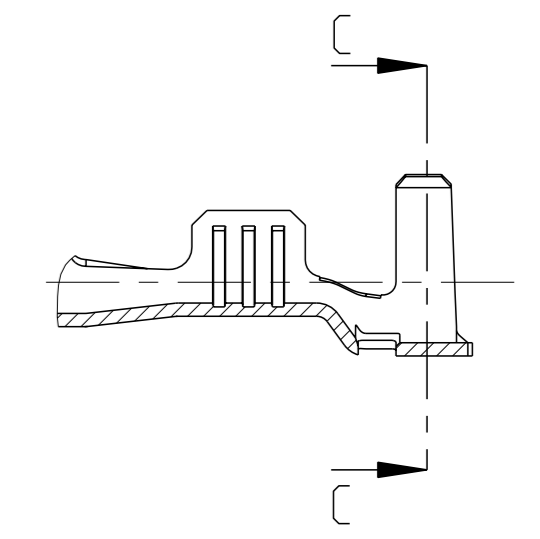
ZONE "B": MIN 1-2 µm ELECTROPLATED Sn OVER MIN 0.05 µm ELECTROPLATED Ni LAYER  
min 1-2 µm galvanisch Sn ueber min 0.05 µm galvanisch Ni Zwischenschicht

REST: Au, Sn OR Ni SURFACE. NO PLAIN SURFACES ALLOWED.  
Au, Sn oder Ni Oberfläche. Keine blanken Stellen erlaubt.

VERSION A  
(UNSEALED / ungedichtet)



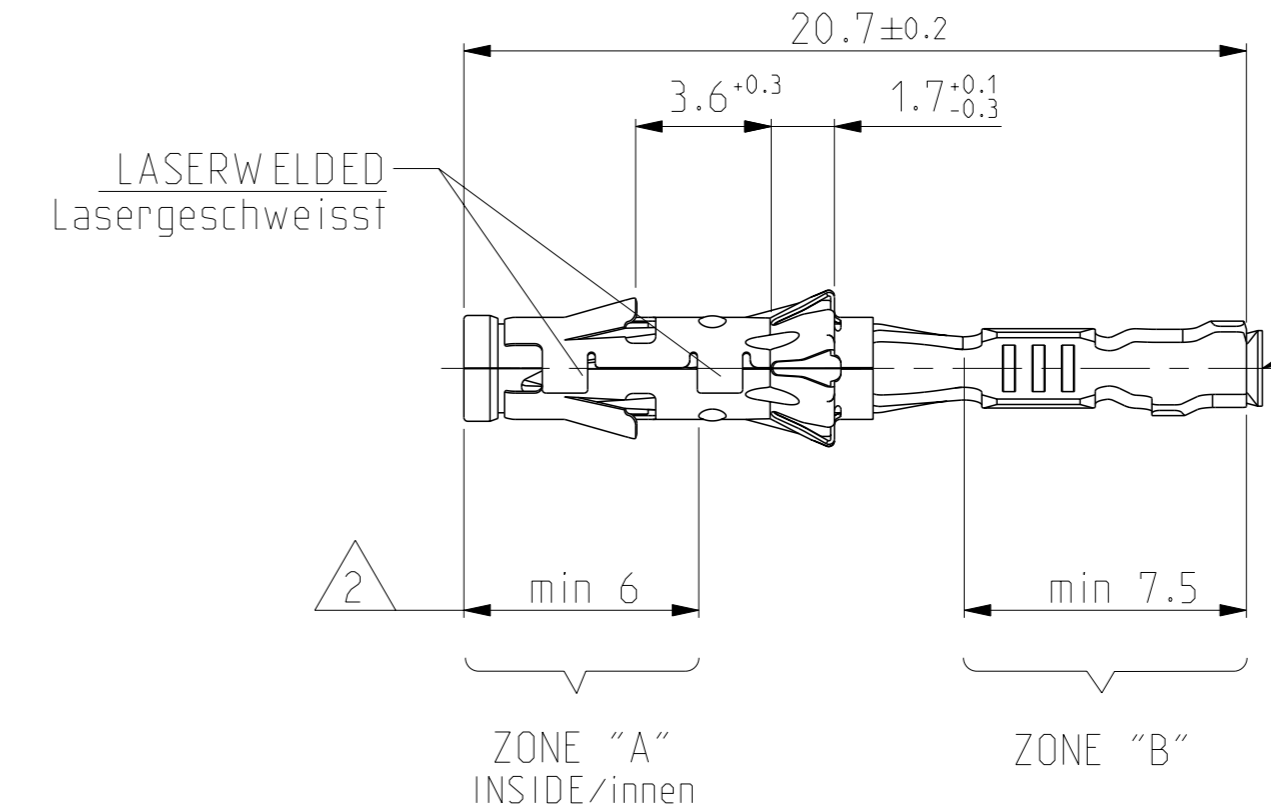
VERSION B  
(SINGLE WIRE SEAL-SYSTEM /  
Einzel-Dichungs-System)  
DGB 0.5 - 2.5 mm



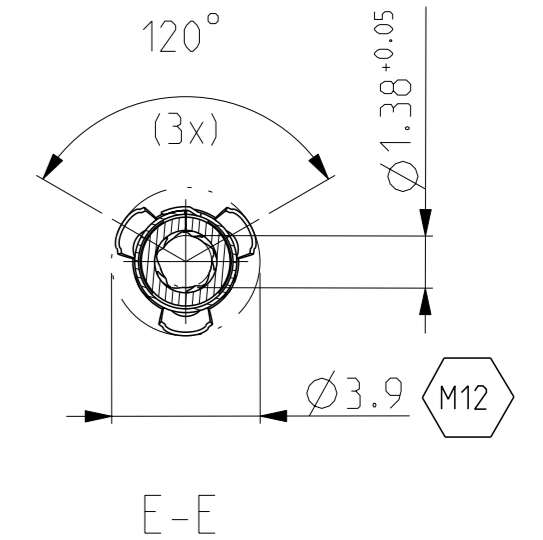
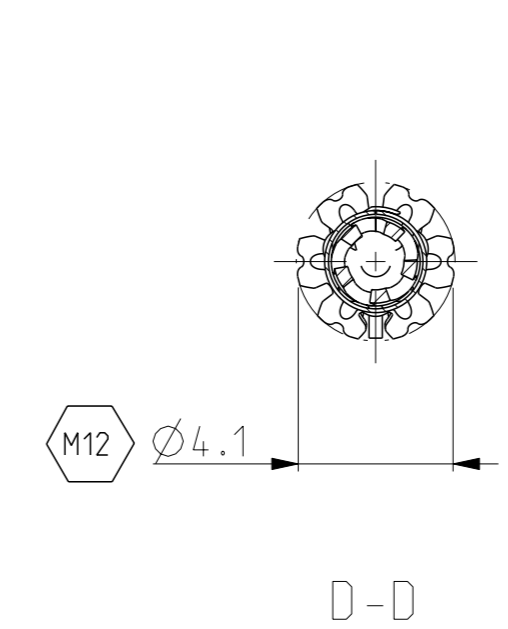
Version B SINGLE WIRE SEAL-SYSTEM/ Einzel-Dichungs-System	1-929990-0	1-962999-0	K	CuNi18Zn20	3	>1.0-2.5 FLR	2.2-3.0	E=3.6 G=3.8 Ø <sub>Dr</sub> =1.7	H=5.0 K=5.0 Ø=3.6	4	7.2	8.7	10.4	828905-1	828922-1
	929990-7	962999-7	K	CuNiSi	2										
Version A (UNSEALED / ungedichtet)	929990-4 SUPERSEDED BY 929990-1	962999-4	K	CuFe2	1	0.5-1.0 FLR	1.2-2.1	E=2.6 G=2.8 Ø <sub>Dr</sub> =1.1	H=4.8 K=4.8 Ø=3.2	3	5.4	7	10.2	828904-1	828922-1
	929990-3	-	K	CuNiSi	4										
	929990-1	962999-1	K	CuNiSi	1										
	1-929989-0	1-962998-0	A	CuNi18Zn20	3										
	929989-8	962998-8	A	CuNiSi	5										
	929989-7	962998-7	A	CuNiSi	2										
	929989-4	962998-4	M	CuFe2	1										
	929989-1	962998-1	M	CuNiSi	1										
	929988-4	962997-4	J	CuFe2	1										
	929988-2	962997-2	K	CuNiSi	2										
929988-1	962997-1	J	CuNiSi	1											

ORDER-No.  
SINGLE SEAL  
Einzel-Dichtung

ORDER-No.  
DEAD END PLUG  
Blindstopfen



CUT-OFF FOR STRIP FORM AND LP-PARTS  
Trennstelle fuer Bandware und LP Teile



Version A (UNSEALED / ungedichtet)	929987-4	962996-4	L	CuFe2	1	>1.0-2.5 FLR	1.9-3.0	E=3.6 G=3.8 Ø <sub>Dr</sub> =1.7	H=4.3 K=4.5 Ø=2.6	4	5.5	8.5	10.2
	929987-1	962996-1	L	CuNiSi	1								
Version A (UNSEALED / ungedichtet)	929986-4	962995-4	L	CuFe2	1	0.5-1.0 FLR	1.4-2.1	E=2.6 G=2.8 Ø <sub>Dr</sub> =1.1	H=3.2 K=3.4 Ø=1.8	3	4.5	7	10.2
	929986-1	962995-1	L	CuNiSi	1								
	929985-4	962994-4	J	CuFe2	1								
	929985-1	962994-1	J	CuNiSi	1								

ORDER-NO. STRIP FORM Bandware	ORDER-NO. LOOSE PIECE Einzelausfuhrung	REV.	MATERIAL Werkstoff	SURFACE Oberflaeche	DGB [mm 2]	ISOL. Ø [mm]	WIRE CRIMP Drahtcrimp	INSUL.-CRIMP Isol.-Crimp	A	B	C	D
							CRIMP DIMENSION (mm) Crimpabmessungen (mm)					

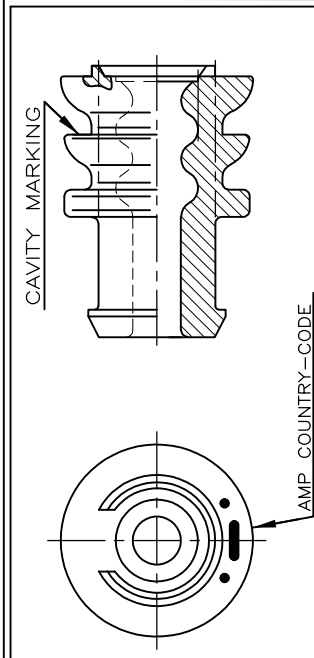
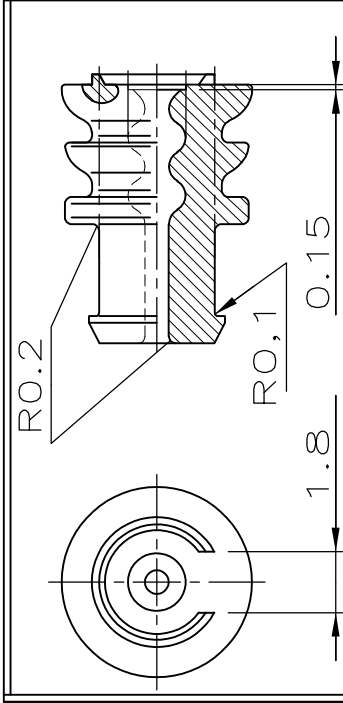
THIS DRAWING IS A CONTROLLED DOCUMENT.		OWN Abraham, G.	17OCT2003	 TE Connectivity
DIMENSIONS: mm		CHK Goepfel, C.	18OCT2003	
TOLERANCES UNLESS OTHERWISE SPECIFIED:		APPROV Bleicher, M.	22OCT2003	NAME DIA. 1.5mm SOCKET CONTACT Dia. 1.5mm Buchsenkontakt
 0 PLC 2 PLC 3 PLC 4 PLC ANGLES ±1.5°		PRODUCT SPEC 108-18028	APPLICATION SPEC 116-18040	RESTRICTED TO
MATERIAL		WEIGHT 0.4g	SIZE A	SCALE 5:1
CUSTOMER DRAWING		00779	©=1355063	SHEET 1 OF 1

LOC	DIST	REVISIONS ÄNDERUNGEN		
—	—	P	LTR	DATE
		J2	REVISED PER ECR-11-025934	28DEC11
				RK
				HMR

VERWENDET FÜR  
 WAR NR. 87-9398-51  
 ÄNDERUNGEN, DIE DEM  
 TECHNISCHEN FORT-  
 SCHRITT DIENEN, BE-  
 HALTEN WIR UNS VOR



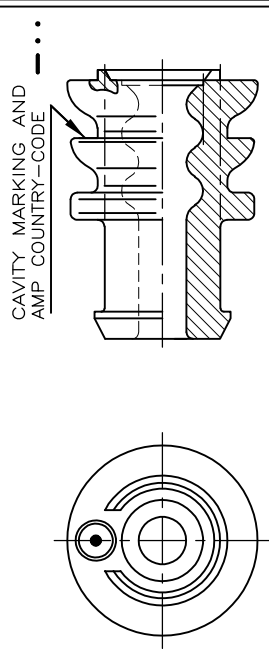
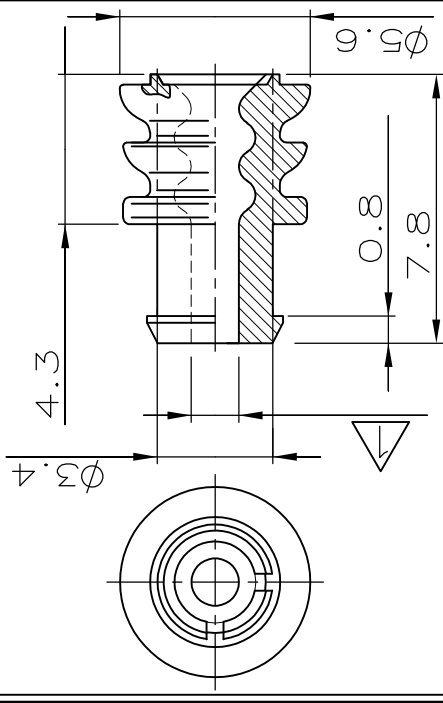
M 1:1



Wahlweise Form  
 ALTERNATIVE PART-DESIGN

Wahlweise Form  
 ALTERNATIVE PART-DESIGN

RELEASED FOR PUBLICATION  
 FREI FÜR VERÖFFENTLICHUNG



THIS DRAWING IS UNPUBLISHED  
 VERÄSSLICHE UNVERÖFFENTLICHTE ZEICHNUNG.

1 Für Isolationsø 2.2-3.0 mm

828905-1	J	SILICON SHORE A 50' lubriziert	weiß
BESTELL-NR.	REV	WERKSTOFF	OBERFLÄCHE FARBE

CAD-ORIGINAL  
 ZEICHNUNG NICHT ÄNDERN

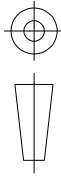
ZEICHNUNG GÜLTIG AB .....

DIMENSIONS: MASSEINHEITEN	mm	MATERIAL	SILICON	FINISH OBERFLÄCHE/FARBE	-
DWN	H. Bouda	16. MAY 88			
CHK	W. PFEFFER	17. MAY 88			
APVD	-				

TOLERANCES UNLESS OTHERWISE SPECIFIED: ALLGEMEIN TOLERANZEN	NAME	STE	TE Connectivity
0 PLC ± -	PRODUCT SPEC		
1 PLC ± 0.3 mm	APPLICATION SPEC		
2 PLC ± -	VERÄRBEITUNGSSPEZ.		
3 PLC ± -			
4 PLC ± -			
ANGLES/WINKEL ± -			

Einzelichtung (DIA 5.6)

SIZE	CAGE CODE	DRAWING NO ZEICHNUNGS-NR.	RESTRICTED TO NUR FUER
A4	00779	C=828905	-



WEICHT GEWICHT	SCALE MASSSTAB	SHEET BLATT	OF VON	REV
-	5:1	1	1	J2

CUSTOMER DRAWING/KUNDENZEICHNUNG