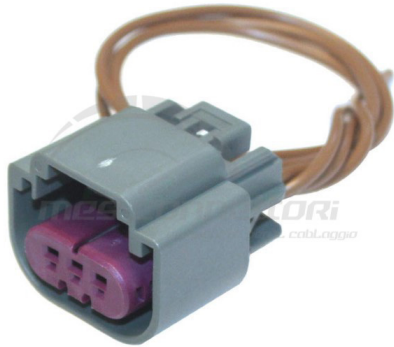
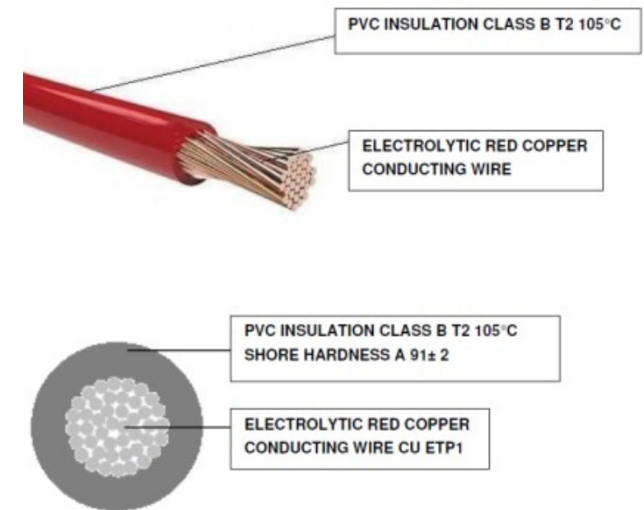


M 1996-C



Caratteristiche CAVO	
Temperatura d'uso	-40 °C / +105 °C (IDLE STATE)
Sezione	1.00 mmq
Colore	Marrone
Documenti di riferimento	ISO 19642 : 2019 / DIN 72551 ISO 6722 CLASS B / LV 112 / ISO 3795 FIAT 91107 / 18 (where applicable) ROHS II/III UN R118
Lunghezza	20 cm
Tipologia	F3T2



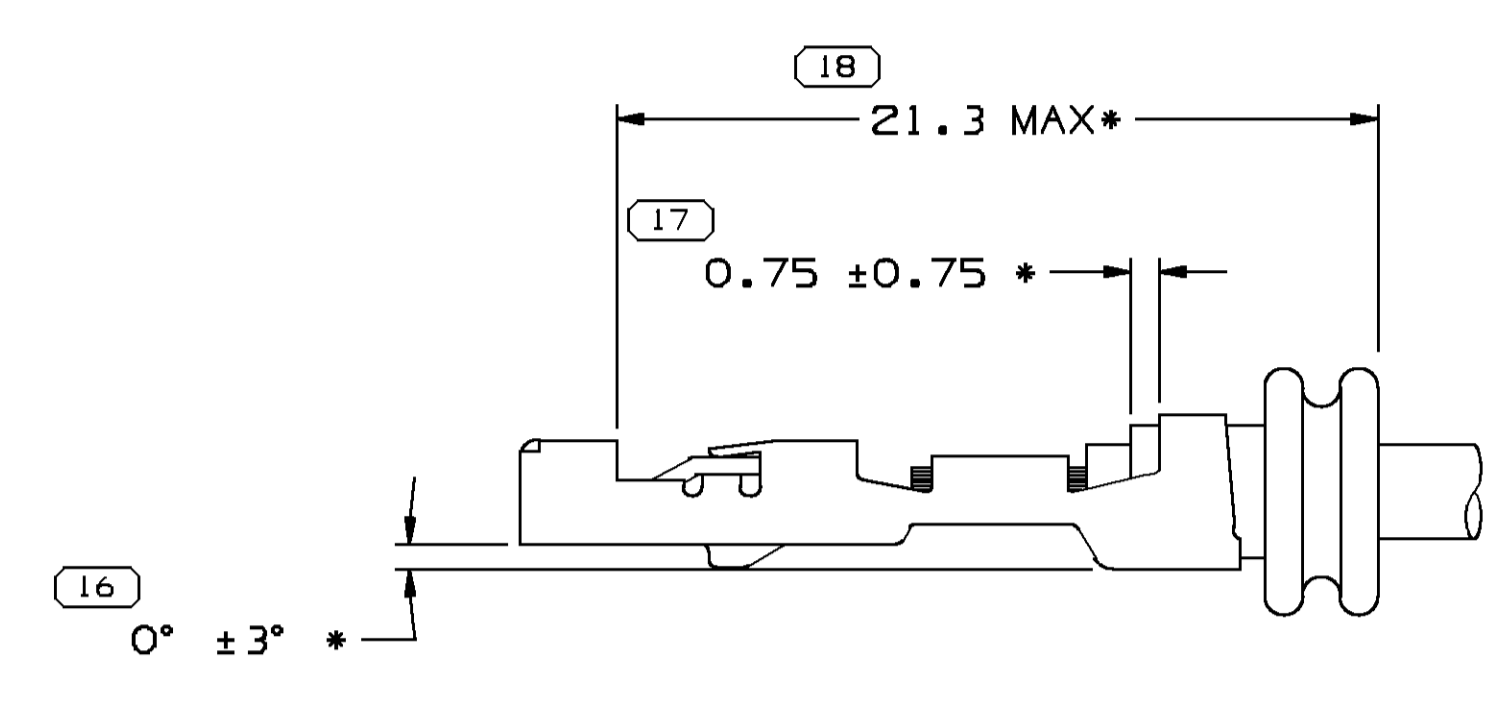
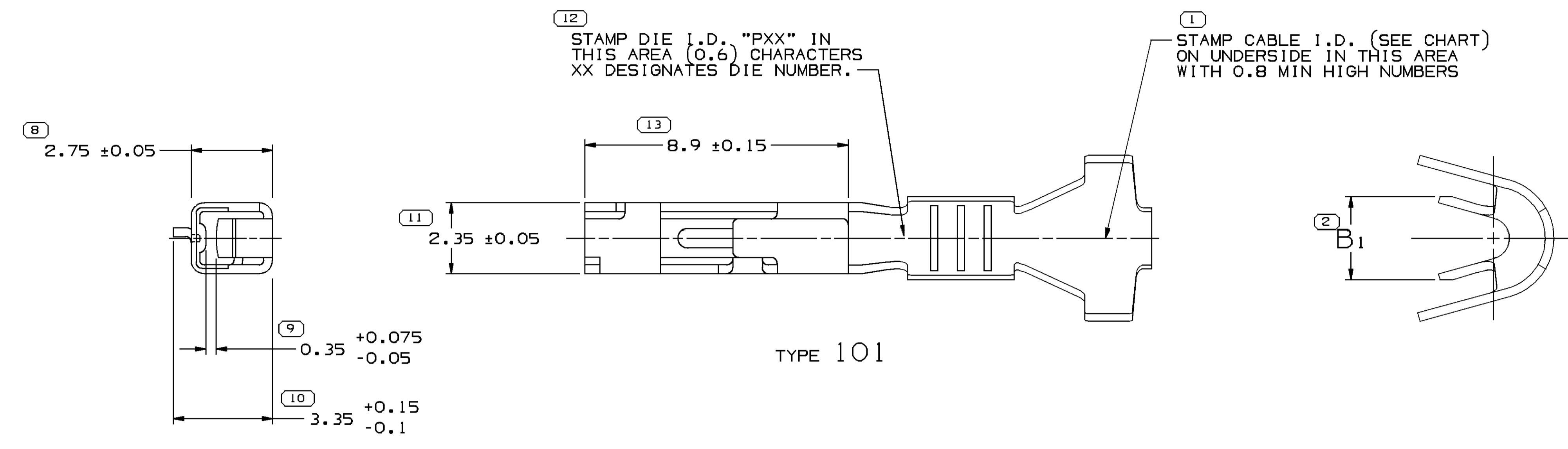
CROSS SECTION	COND. CONSTR.	EXT. DIAMETER.	INSUL. MATERIAL	EL. RES. MAX 20°	MAX VOLT.	INSULATION THICKNESS (+)
1 x 1,00	32 x 0,20 ± 0,01 mm	2,10 +0 mm -0,2 mm	PVC T2 HT 105 °C	18,5 OHM/KM	< 300 V	≥ 0,24

Proseguire nella pagina successiva per visualizzare la scheda tecnica dei componenti

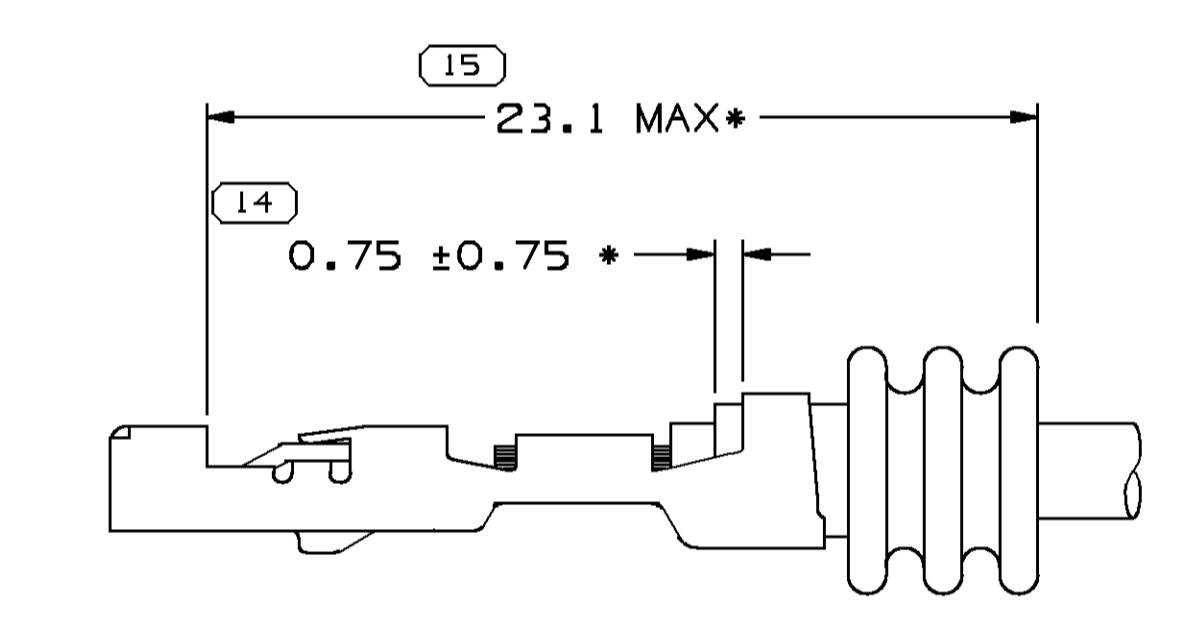
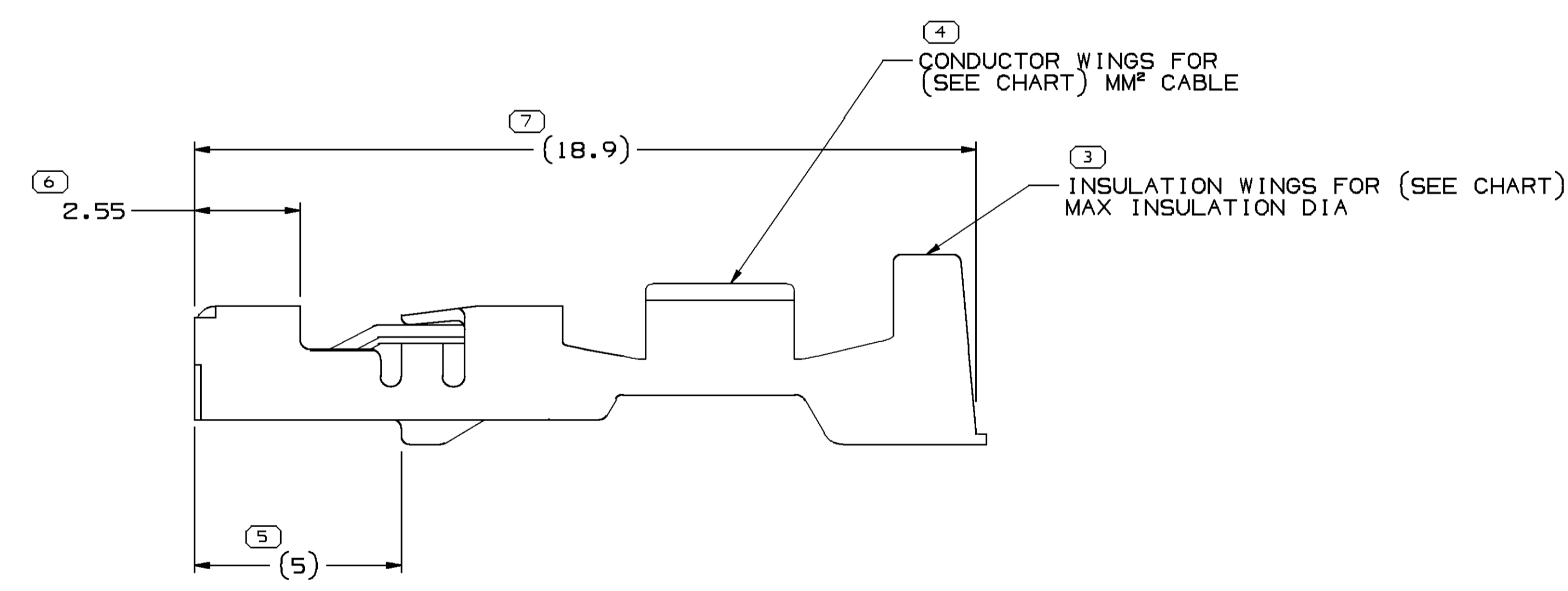
Revisione	Prodotto
REV.00 10/04/2026	OEM

SYMBOL DEFINITION		TOTAL NO OF INSPECTIONS REQUIRED	
A DIMENSION WITHOUT AN INSPECTION REPORT SYMBOL () DOES NOT REQUIRE INSPECTION. IT MAY BE CONTROLLED ON THE INDIVIDUAL COMPONENT DRAWING.		18	
	LAST NO. USED	18	

MISSING SYMBOLS		NO MISSING SYMBOL NUMBER	
DATE	STG	REV	N/P
30JL02	R	01	-
12SE03	R	02	-
17SE03	R	03	-
24CC03	R	04	-
16AU04	R	05	-
16MY05	R	06	-
05NO08	R	07	-
16MR10	R	08	-
04AU10	R	09	-
30SE10	R	10	-
23MY11	R	11	-



2 RIB SEAL POSITION REF AND TERMINAL/CABLE ALIGNMENT
SCALE 5:1



3 RIB SEAL POSITION REF
SCALE 5:1

NOTES

- UNLESS OTHERWISE SPECIFIED AND/OR INDICATED: DIMENSIONS ARE TO FACE OF VIEW SHOWN AND AUTOMATICALLY ROUNDED BY COMPUTER FOR INSPECTION. (SEE MATH MODEL FOR PRECISE DIMENSIONS.) FOR ALL OTHER DIMENSIONS NOT SHOWN BUT REQUIRED FOR TOOL BUILD, SEE MATH MODEL FOR PRECISE TOOL PATH DATA.
- REFERENCE MATING COMPONENTS OR EQUIVALENT:
TERMINAL - 15304706
- * DENOTES DIMENSIONS MADE AT CUT-OFF AND CRIMP DIE.
- DO NOT PROBE, TEST OR OTHERWISE CONTACT THE INTERIOR REGION (THE SPRING OR ANY MOVING PART) OF THIS TERMINAL. SEVERE DAMAGE CAN OCCUR, COMPROMISING THE PERFORMANCE OF THE ELECTRICAL INTERFACE.
- PLATING TYPE:
1. REFLOW TIN 1.9-3.3 MICROMETERS THICK WITH A COPPER UNDERPLATE 0.5 MICROMETER TO 1.0 MICROMETER THICK.

PLATING TYPE INFORMATION SHOWN ABOVE IS REFERENCE ONLY. PLATING REQUIREMENTS ARE CONTAINED IN APPLICABLE MATERIAL SPECIFICATION.

PART NO	REV	N/P	STATUS	PREFERRED MAT'L SIZE	ALTERNATIVE MAT'L SIZE	MAT'L DESCRIPTION	SIZE (MM²)	ID	DIA	TYPE	B _{1±0.2}	APPLICATION	TYPICAL CABLE SEAL OR EQUIVALENT	TYPICAL SEALING CAVITY CONFIGURATION	CONTACT AREA PLATING TYPE (SEE NOTE 5)	CRIMP AREA PLATING TYPE (SEE NOTE 5)
15326267	04	AG	-	0.3 X 26.71	0.3 X 27.38	COPPER ALLOY	0.75 - 0.8	18	2.02 - 1.7	101	2.65	SEALED (MINI)	15305351	3.2 X 4 OVAL	I	I
15326266	04	AG	-	0.3 X 26.71	0.3 X 27.38	COPPER ALLOY	0.35 - 0.5	21	1.85 - 1.2	101	2.1	SEALED (MINI)	15366022	3.2 X 4 OVAL	I	I
15326265	04	AG	-	0.3 X 26.71	0.3 X 27.38	COPPER ALLOY	0.75 - 1	17	2.25 - 1.7	101	2.65	SEALED (GT)	15366060	Ø 4 ROUND	I	I
15326264	04	AG	-	0.3 X 26.71	0.3 X 27.38	COPPER ALLOY	0.35 - 0.5	21	1.85 - 1.2	101	2.1	SEALED (GT)	15366021	Ø 4 ROUND	I	I

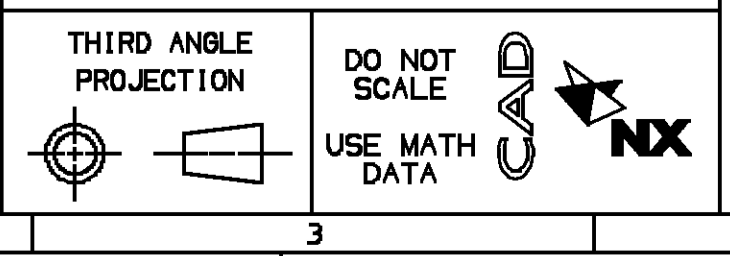
PART DRAWING	
DATE	18AP97
OR	H. CASTRILLON
APV02	FCO, KOPCA
APV03	S.C. HSIEH
APV04	
APV05	

DELPHI
DELPHI PACKARD ELECTRICAL/ELECTRONIC ARCHITECTURE
WARREN, OH

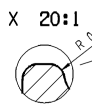
DATE: 18AP97
OR: H. CASTRILLON
APV02: FCO, KOPCA
APV03: S.C. HSIEH
APV04:
APV05:
SUBSTANCE OF CONCERN AND RECYCLED CONTENT, PER DELPHI (02449001)

DRAWING NUMBER: 12191815
SHEET NO: 2 OF 2
REV: 11

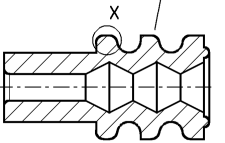
PROCESS SENSITIVE DIMENSION	
DIMENSIONS ENCLOSED IN () INDICATE REFERENCE DIMENSIONS AND NO TOLERANCE LIMITS ARE ESTABLISHED	
DIMENSIONAL RANGE (MM)	CHART CD
FROM 0 TO 12	> 12
TOLERANCE UNLESS OTHERWISE SPECIFIED	
±0.1	±0.2
ANGULAR TOLERANCE ±2°	



alternatively only for / wahlweise nur fuer:
 ID-Nr.: 401 257 / Part-No.: 1532791B
 ID-Nr.: 406 131 / Part-No.: 1532791B
 ID-Nr.: 406 129 / Part-No.: 15339412



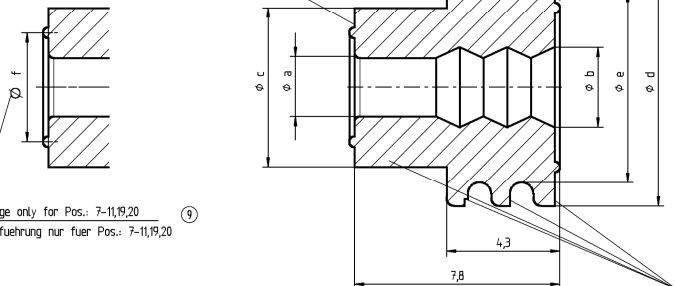
middle sealing lip alternatively bent only for:
 mittlere Dichtlippe wahlweise gedreht nur fuer:
 ID-Nr.: 401 257 / Part-No.: 1532791B
 ID-Nr.: 406 131 / Part-No.: 1532791B
 ID-Nr.: 406 129 / Part-No.: 15339412



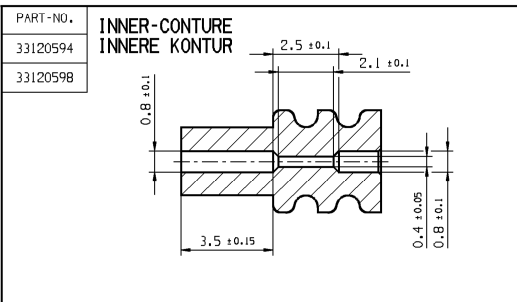
Parts not allowed on front face to stick together (afd.-Nr.: 4-6)
 Teile duerfen stimsseitig nicht miteinander verkleben (afd.-Nr.: 4-6)

revolve round optionally interrupt injection point possible
 umlaufend wahlweise unterbrochen Anspritzung moeglich

parting line / injection point possible
 Werkzeugtrennung / Anspritzung moeglich



Loose / Lose				Put on the belt / geguert				Pos.	Cbl.Ø Ltg.Ø	Cable cross-section mm² altern. Leitungsquerschnitt mm² wahlw.		Color Farbe	SIM RAL	Dimension φ Mass ø					
ID-Nr.:	Part-No.:	Part REV	Date Datum	ID-Nr.:	Part-No.:	Part-REV	Date Datum			FLY	FLRY			ax0,1	bx0,2	cx0,2	dx0,1	e+0,1 -0,2	fs0,2
Seal for female-terminal 1,5 mm and tab-terminal 1,5 mm Dichtung fuer Flachsteckhuelse 1,5 mm und Flachstecker 1,5 mm																			
---	33120594	01	310C13	---	---	---	---	0,8-12	0,08-0,13	black schwarz	9011	---	---	2,6	3,9	2,6	---		
406 131	1532791B	42	13JN00	---	---	---	2	12-16	0,35-0,5	wine red weinrot	3027	0,8	1,4	2,6	3,9	2,6	---		
401 257	1532791B	42	13JN00	401 258	15344666	42	13JN00	1	12-2,0	gray gelb	7000	1,0	1,9	2,6	3,9	2,6	---		
---	15344778	37	05MY99	---	---	---	12	1,4-2,0	0,5-1,0	green gruenn	6010	1,0	1,9	2,6	3,9	2,6	---		
406 129	15339412	42	13JN00	---	---	---	3	1,9-2,1	0,75-1,5	maize maissgelb	1007	1,5	1,9	2,6	3,9	2,6	---		
---	13735535	01	150C08	---	---	01	150C08	21	12-2,0	yellow gelb	1016	1,0	1,9	2,6	3,9	2,6	---		
---	13735527	01	150C08	---	---	01	150C08	22	12-2,0	green gruenn	6010	1,0	1,9	2,6	3,9	2,6	---		
Seal for female-terminal 2,8 mm and tab-terminal 2,8 mm Dichtung fuer Flachsteckhuelse 2,8 mm und Flachstecker 2,8 mm																			
---	33120598	01	310C13	---	---	---	---	0,8-12	0,08-0,13	wine red weinrot	3027	---	---	3,4	5,65	4,5	---		
401 199	15327860	42	13JN00	401 198	10718144	42	13JN00	4	12-2,0	blue blau	5010	0,8	1,6	3,4	5,65	4,5	---		
---	15498732	01	250C04	---	---	---	15	12-2,0	0,35	gray grau	7000	0,8	1,6	3,4	5,65	4,5	---		
404 924	10722091	01	11MY04	---	---	---	14	12-2,0	0,35	orange orange	2004	0,8	1,6	3,4	5,65	4,5	---		
401 187	15327863	42	13JN00	401 188	15344643	42	13JN00	5	2,0-2,7	red / brown rot / braun	3011	1,6	2,2	3,4	5,65	4,5	---		
401 259	15327859	42	13JN00	401 260	10720641	42	13JN00	6	2,7-3	maize maissgelb	1007	2,2	3,0	3,4	5,65	4,5	---		
Seal for female-terminal 4,8 mm and tab-terminal 4,8 mm Dichtung fuer Flachsteckhuelse 4,8 mm und Flachstecker 4,8 mm																			
401 201	15363779	42	13JN00	401 200	15344644	42	13JN00	7	12-2,0	yellow gelb	1016	0,8	1,6	6,0	9,0	7,2	3,4		
401 203	15363604	42	13JN00	401 202	15344645	42	13JN00	8	2,0-2,7	white weiss	9010	1,6	2,2	6,0	9,0	7,2	3,7		
401 205	15327864	42	13JN00	401 204	15337204	42	13JN00	9	2,7-3,8	red / brown rot / braun	3011	2,2	3,0	6,0	9,0	7,2	4,1		
401 208	15363605	42	13JN00	401 207	15344646	42	13JN00	10	4,0-4,5	green gruenn	6010	3,2	3,9	6,0	9,0	7,2	4,6		
401 210	15344647	42	13JN00	401 209	15344404	42	13JN00	11	4,7-5,3	gray grau	7000	3,8	4,8	6,5	9,0	7,2	5,15		
---	13735454	01	150C08	---	---	01	150C08	19	2,7-3,8	blue blau	5010	2,2	3,0	6,0	9,0	7,2	4,1		
---	13735480	01	150C08	---	---	01	150C08	20	2,7-3,8	green gruenn	6010	2,2	3,0	6,0	9,0	7,2	4,1		



Remarks :
 - Material: Silicone, self-lubricated,
 Tensile strength: Rm min. 6,2 Nm/mm²
 Gap argumentation > 375% DIN 53 504-52
 ozoneresistant, heatresistant -40 to +180°C
 gauged on testboard

Bemerkungen :
 - Werkstoff: Silikon, selbstschmierend,
 Zugfestigkeit: Rm min. 6,2 Nm/mm²
 Reissdehnung > 375% DIN 53 504-52
 ozonbestaendig, temperaturbestaendig -40 bis +180°C
 gemessen an Pruefplatten

Zone	DWG Status REV IN P/DWG	Revision history	Date	Name	Check	St. GR
01	01	Initial release Freigebe	16JUN00	U.Tor.	J.Moch	R.Wis.
D12	01	AA ID-Nr.: 403 960 and Part-No.: 07207A deleted ID-Nr.: 697 960 and Part-No.: 07207A corrected	05DEC02	Frimm	Cvasa	R.Wis.
C12	01	AB ID-Nr.: 608 447 and Part-No.: 076347 deleted ID-Nr.: 698 447 and Part-No.: 076347 corrected	05DEC02	Frimm	Cvasa	R.Wis.
B12	01	AC Cable ø 2,8-3,8 was 2,8-2,9	05DEC02	Frimm	Cvasa	R.Wis.
C9	01	AD Luftung ø 2,8-3,8 var 2,2-2,9	17DEC03	Frimm	Cvasa	R.Wis.
C11	02	AE Luftungs ø 17-21 var 17-21	11MY04	Frimm	Cvasa	R.Wis.
C11	03	AF Part-No.: 072090 added Part-No.: 072090 Minus	25OC04	Frimm	Cvasa	R.Wis.
C9	03	AA Part-No.: 050872 added Part-No.: 050872 Minus	24MY05	Frimm	Cvasa	R.Wis.
C/D11	03	AB Part-REV / Date corrected Part-REV / Datum korrigiert	23AUG05	Frimm	Cvasa	R.Wis.
D6-12	04	Part-No.: 052078 Rev 42 0400 var 33 02187 Part-No.: 052793 Rev 42 0400 var 33 02187	23AUG05	Frimm	Cvasa	R.Wis.
B4	AA	Part-No.: 154461, 154462 added Part-No.: 154461, 154462 Minus	30SEP05	Frimm	Cvasa	R.Wis.
D6-12	05	Part-No.: 152604 added Part-No.: 152604 Minus	16MY06	Frimm	Cvasa	R.Wis.
C7	06	Green var added Part-No.: 053644 Green var. Minus Part-No.: 053644	27JUL06	Frimm	Cvasa	R.Wis.
A9	06	AA Cable 2,8-3,8 was 2,8-2,9 Part-No.: 053764 Cable 2,8-3,8 var 2,8-2,9 Part-No.: 053764	06OC06	Frimm	Cvasa	R.Wis.
A9	06	AB Cable 2,8-4,0 var 2,8 Part-No.: 053764 Cable 2,8-4,0 var 2,8 Part-No.: 053764	08NO06	Frimm	Cvasa	R.Wis.
A-D9	06	AC Pos-Numbering changed according to D-drawing Pos-Nummerierung an D-Zeichnung angepasst	26JA07	Frimm	Cvasa	P.Les.
C-A6	07	Part 072044, 072040, 072035, 072027 added Part 072044, 072040, 072035, 072027 Minus	15OC08	W.Szo	Frimm	K.PH
D12	08	Part-No.: 154461, 154462, 154463 deleted Part-No.: 154461, 154462, 154463 Minus	09DEC09	V.Kas	J.Saf	SYS
C8	08	AA Cable cross section for Part-No. 1539412 changed (altersquerschnitt fuer Teil-Nr. 1539412) changed	01OC13	K.wir.	T.Plin	SYS
E12	09	Part 310094 and 310098 added Part 310094 and 310098 Minus	31OC13	A.HHG	A.URB	SYS
FB	09	AA SW 16 FORMED MASS 16 ENTERT	30JUN14	A.HHG	A.URB	SYS
09	AB	SPRS corrected in BOM SPRS korrigiert in Stückliste	30AP15	V.KAS	K.STO	SYS
09	AC	RAL 107 WAS RAL 106 INFITING ERROR RAL 107 WAS RAL 106 SCHWENKUNTER	28JUN16	V.KAS	K.STO	SYS
E7	09	AD SH RAL ADDITION	13JUL16	R.MDL	V.KAS	SYS
F11	09	AE POSITIONS R AND 70 ADDED / POSITIOEN R UND 70 HINZU	10AUG16	P.SCH	E.OSW	SYS
C8	09	AF CABLE DIAMETER CHANGED - WIRELINE ERROR KABELDIAMETER GEANDERT - SCHREIBFEHLER	09JAN17	P.SCH	V.KAS	SYS
A-B6	09	AG CABLE DIAM FROM MAX. 2,9 TO 2,7 CORRECTED (KABELDIAM. VON MAX. 2,9 ZU 2,7 KORREGIERT)	20JUL17	V.KAS	T.BOL	SYS
B9	09	AH CABLE DIAM FROM MAX. 2,9 TO 3 CORRECTED (KABELDIAM. VON MAX. 2,9 ZU 3 KORREGIERT)	05OC18	T.MAZ	V.KAS	SYS



Scale/Maßstab	Scale/Maßstab
1:1	5:1

Results of this document and other B to others and the use or consideration of the contents thereof, are forbidden without express authority. Otherwise any data in the present of changes. All rights are reserved in the event of the grant of a patent or the registration of a utility model or design. Weitergabe oder Verwertung dieser Unterlagen, insbesondere das Weitergeben an Dritte, ist ohne schriftliche Genehmigung der DELPHI AG ist ausdrücklich untersagt.

DELPHI D - 4219 WUPPERTAL

Part No.: see chart / siehe Tabelle
 Part No.: see drawing / siehe Zeichnung

Dimensions without tolerance
 ± 0,2
 -0,2

Dimensions with tolerance
 ± 0,2
 -0,2

Scale/Maßstab: 10:1
 1:1; 5:1

Cable seal
 Einzeldrahtdichtung

6501.1713/003

15446589
 A1

DELPHI

DELPHI

CONTROL DOCUMENTS ARE ONLY AVAILABLE ON THE SERVER