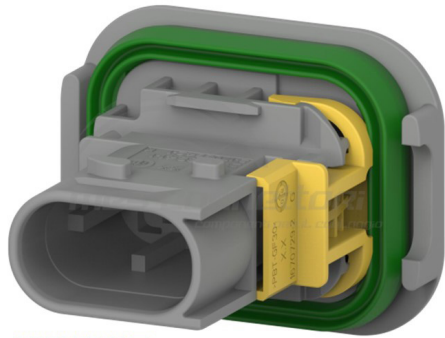


# M 2-1703841-1K



MINIKIT

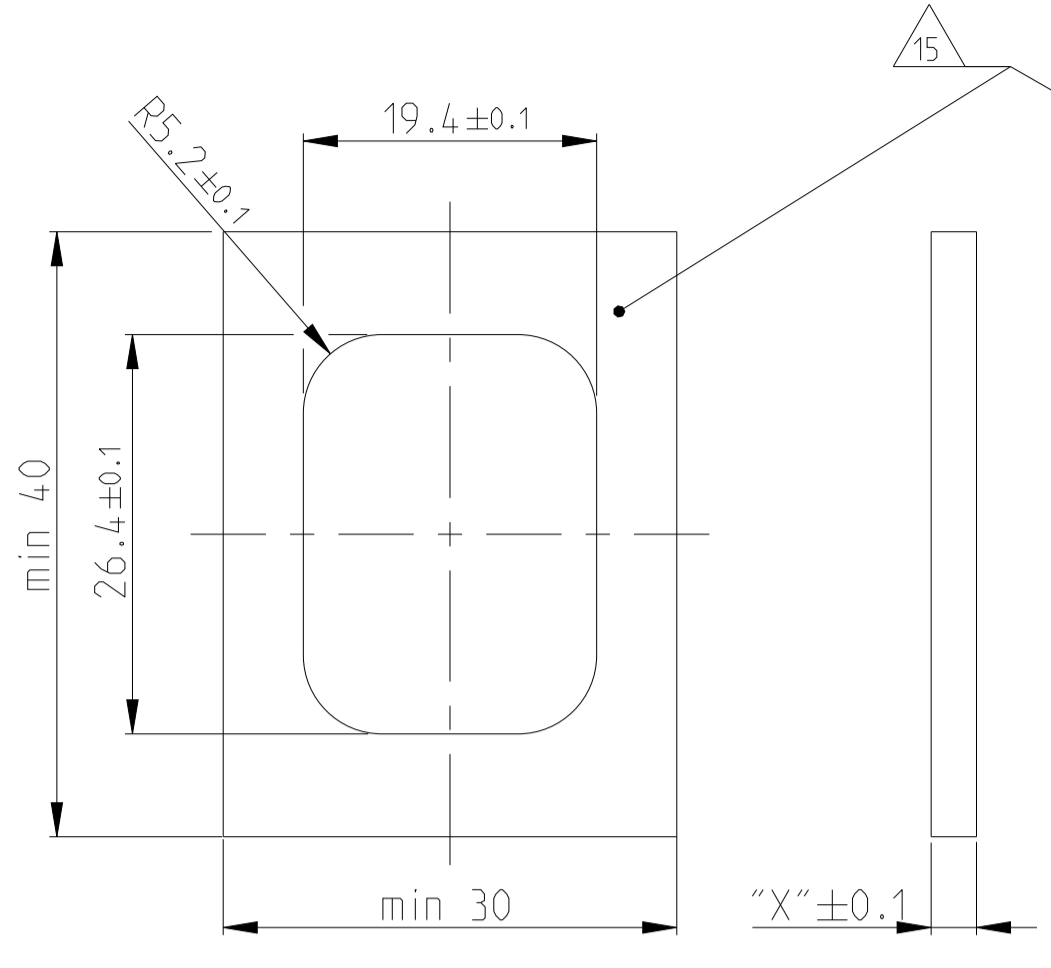
*Proseguire nella pagina successiva per visualizzare la scheda tecnica dei componenti*

Revisione	Prodotto
REV.00 15/04/2026	OEM

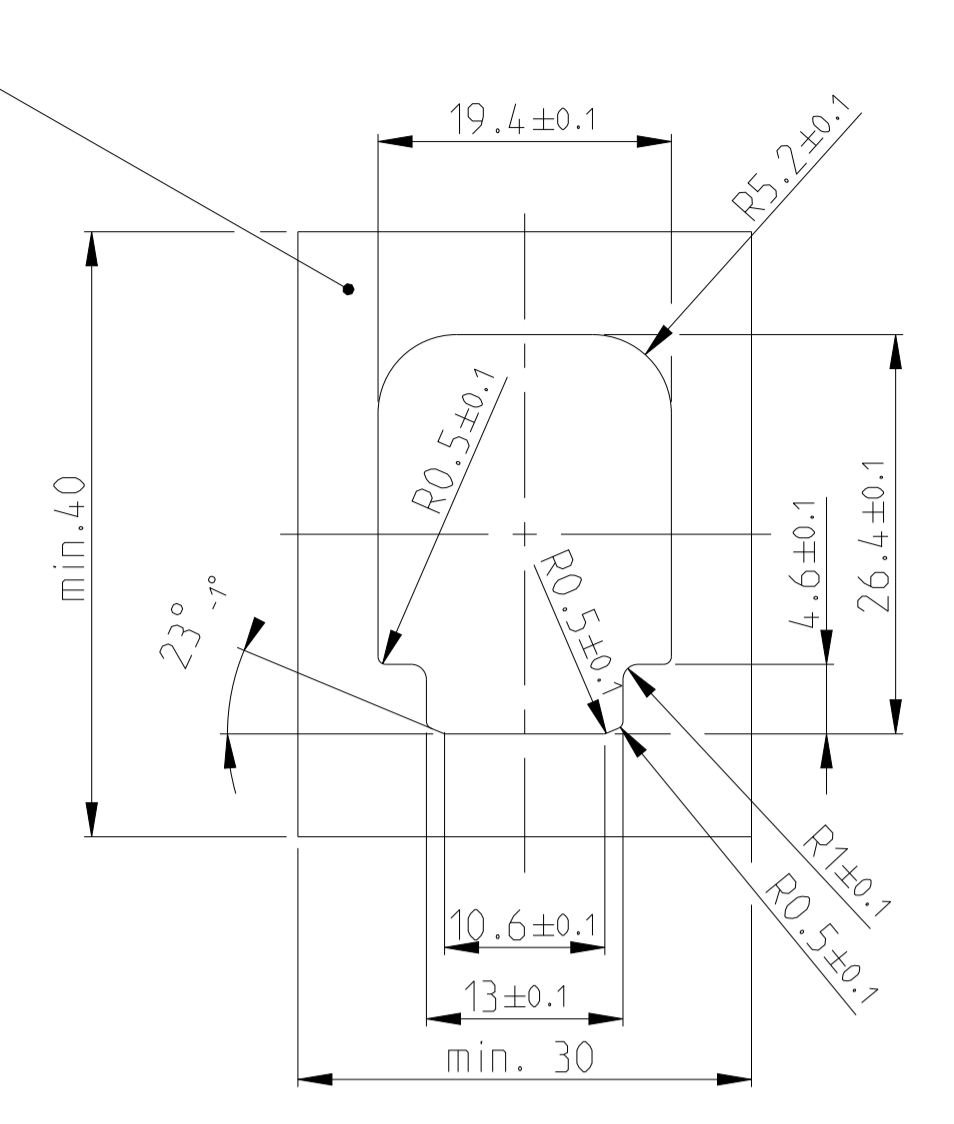
1-1703841-1 AS SHOWN  
1-1703841-1 wie gezeigt

LOC	DIST	REV	DATE	OWN	APPV
A1	-	H	22SEP2010	AK	JG
		J	25MAY2011	DB	JG
		J1	130C12016	MAH	GILC
		J2	15MAR2022	NS	AW

CUT OFF (SYMMETRICAL)  
Befestigungsausschnitt (symmetrisch)

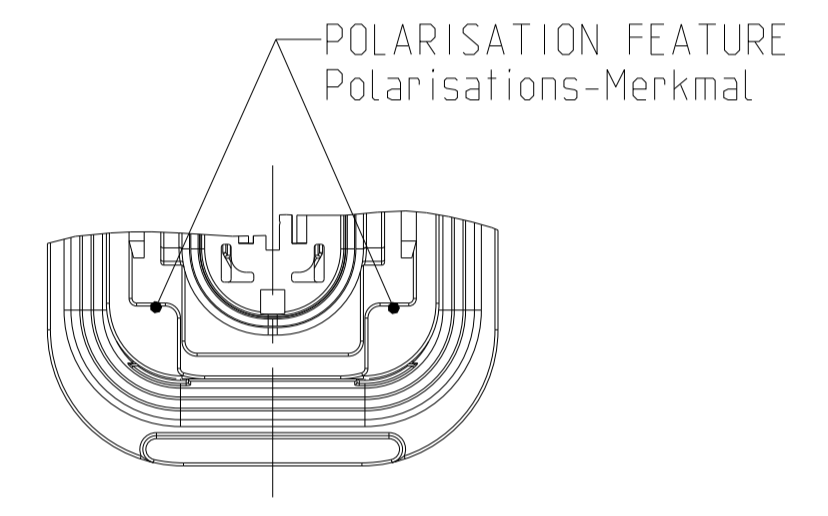


CUT OFF WITH POLARISATION  
Befestigungsausschnitt mit Polarisation

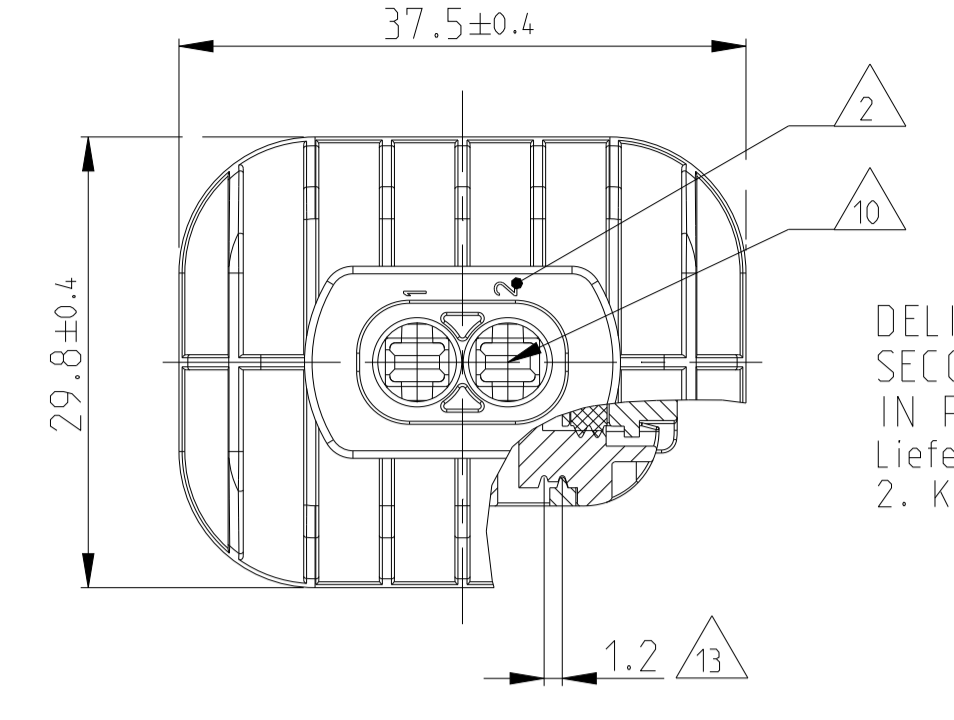


FIXING WITH SLIDE  
Befestigung mit Schieber

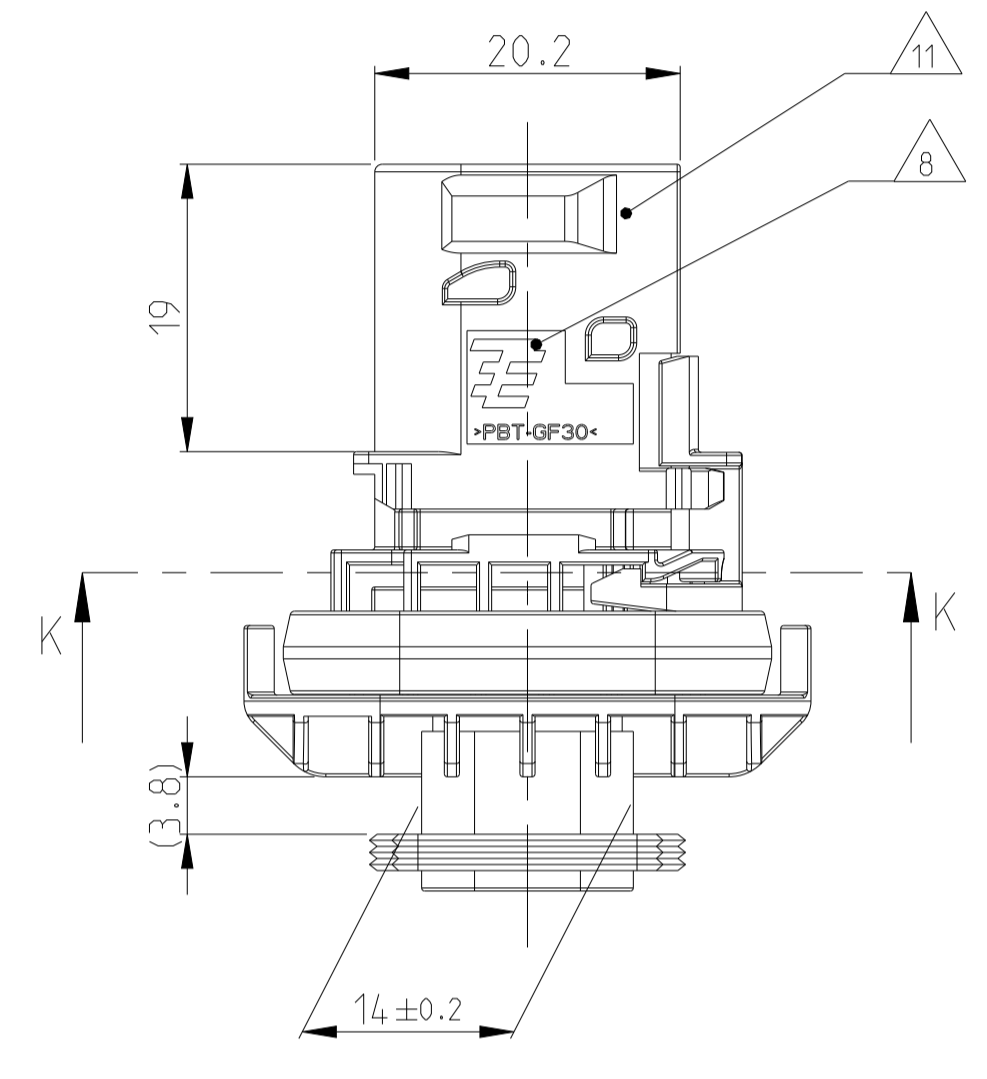
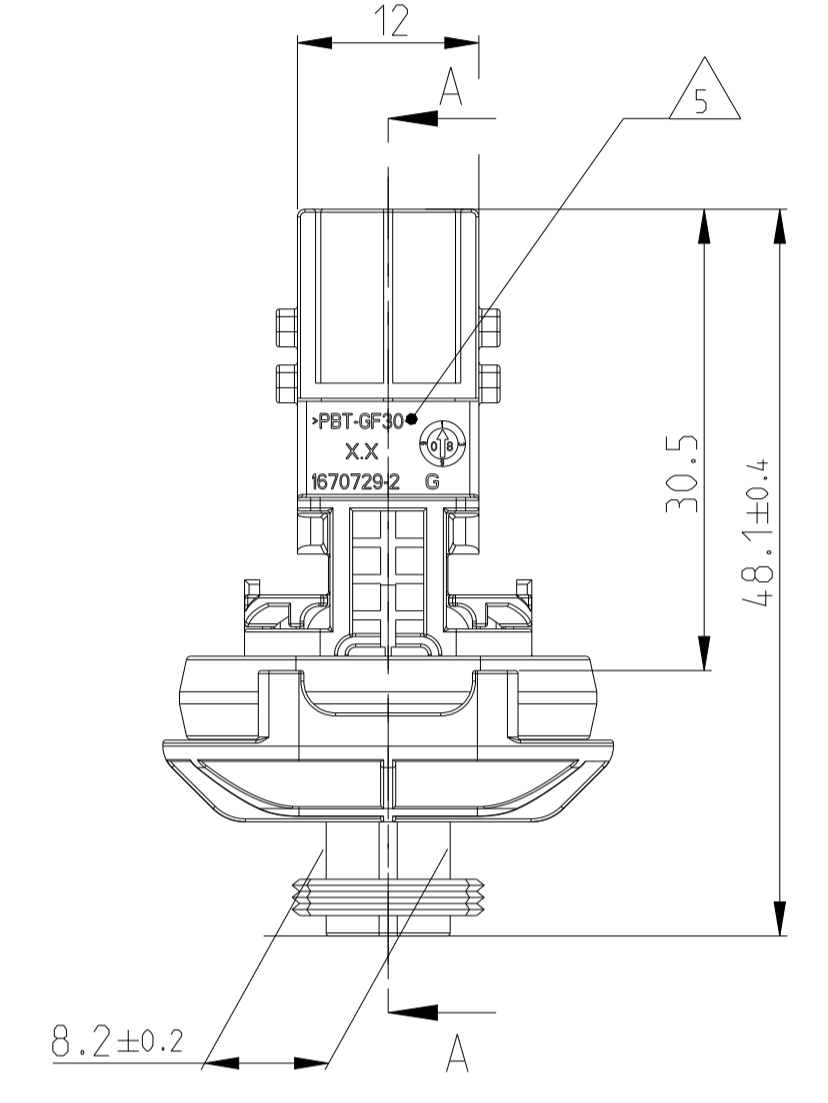
W ALLTHICKNESS "X" Wandstaerke "X"	TE ORDER NO. TE Best. Nr.
1.5mm	N.N.
2.5mm	0-1703838-2
3.0mm	0-1703838-1
3.5mm	0-1703838-6
4mm	N.N.



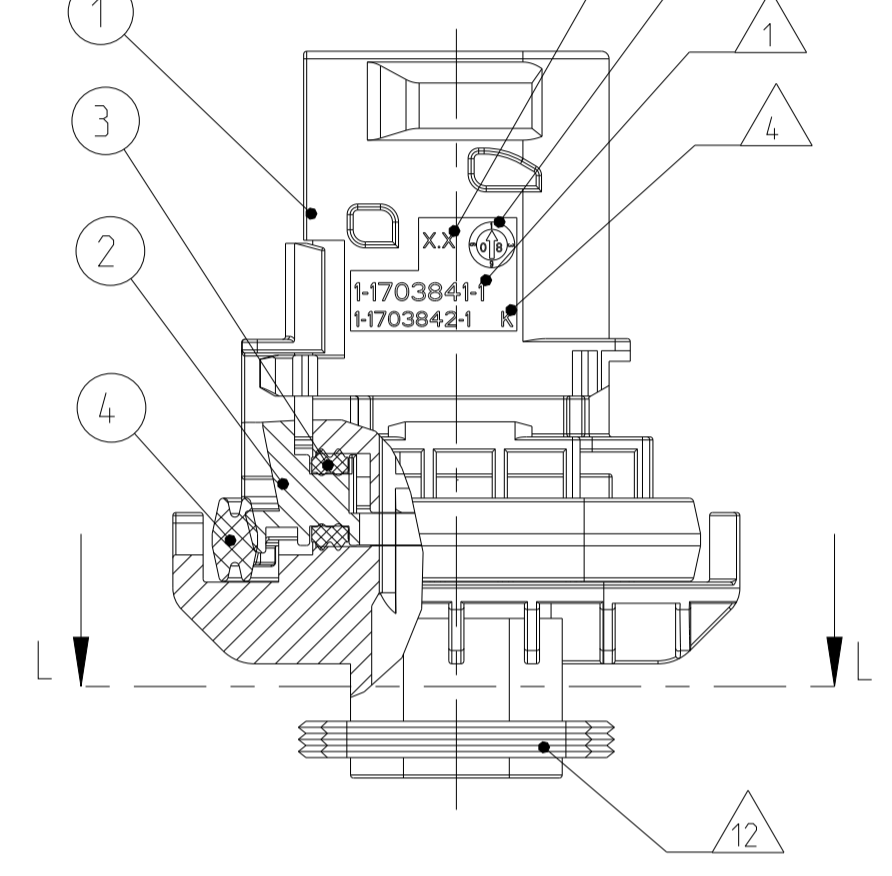
SECTION K-K  
Schnitt



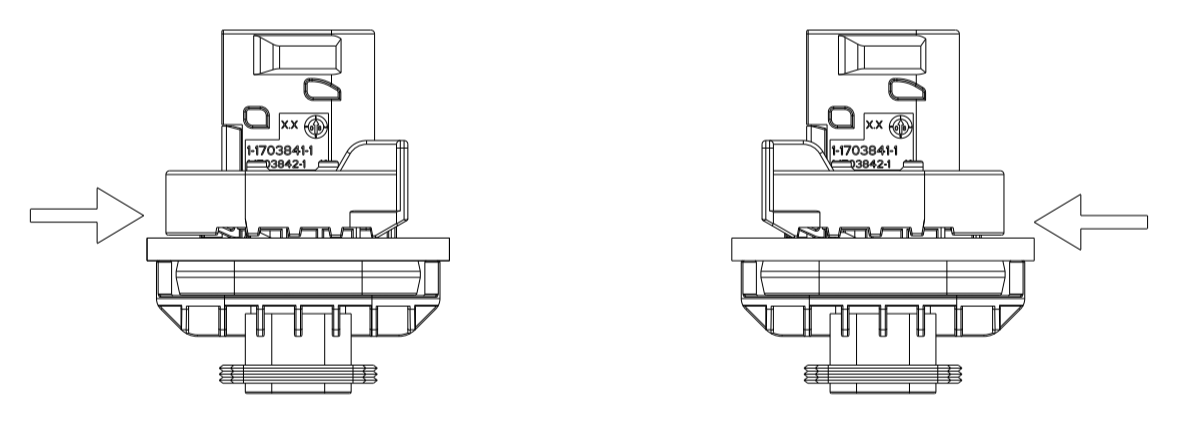
DELIVERY CONDITION:  
SECONDARY LOCKING DEVICE  
IN PRE-LOCKED POSITION  
Lieferzustand:  
2. Kontaktsicherung in Vorraststellung



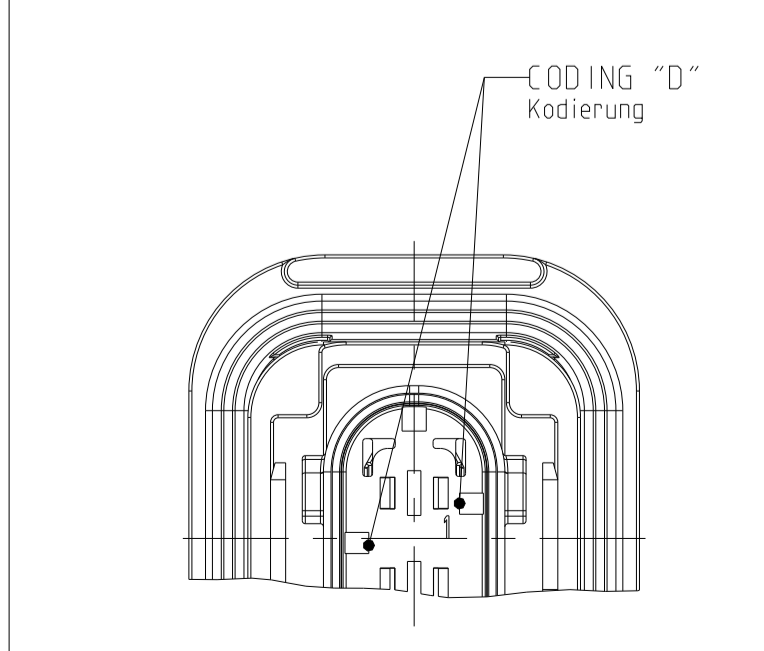
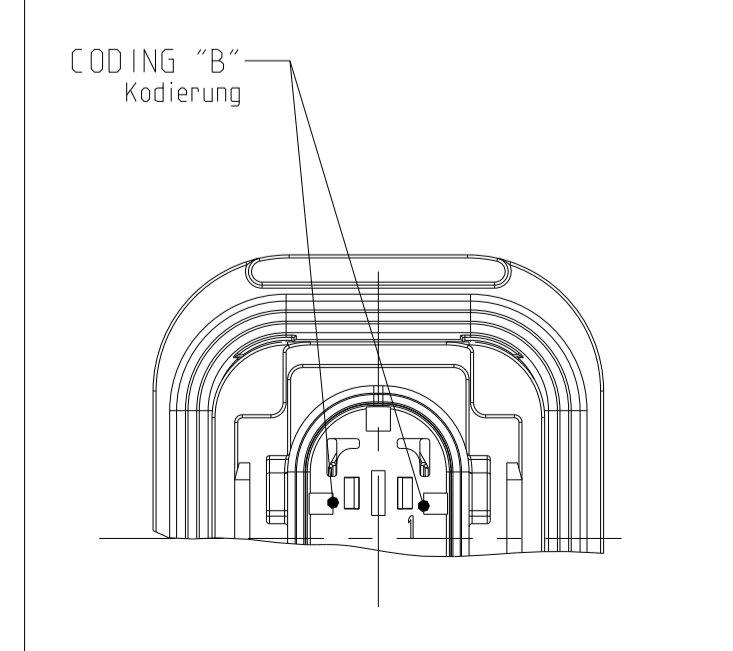
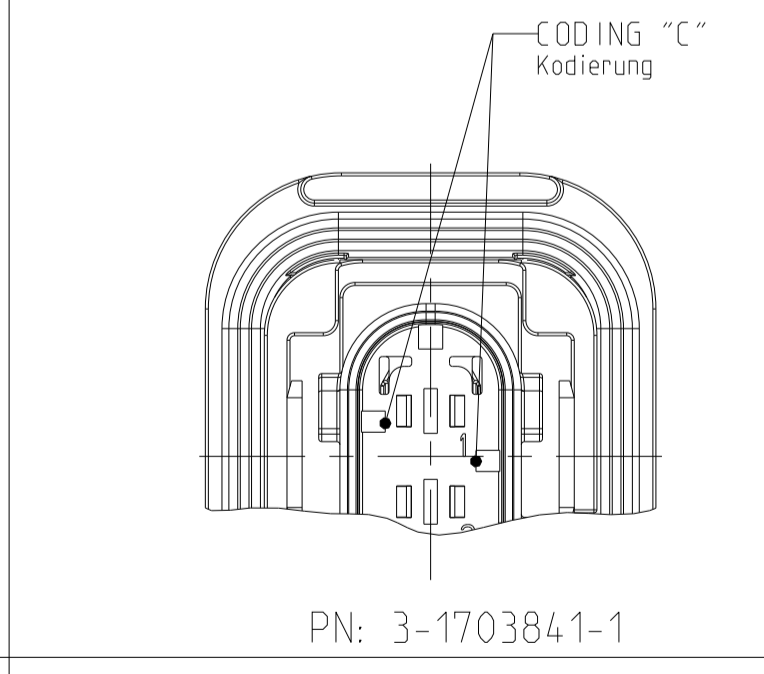
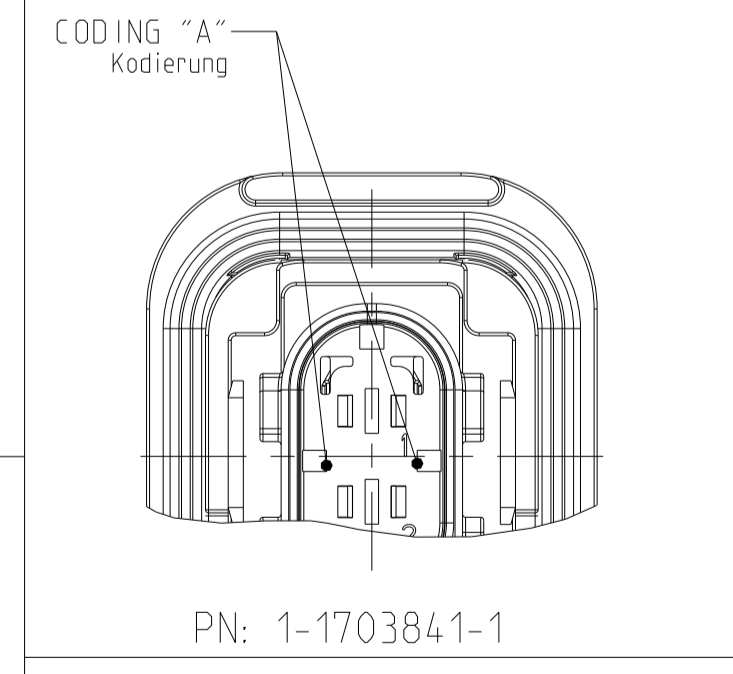
SECTION A-A  
Schnitt



SLIDE FROM BOTH DIRECTIONS MOUNTABLE  
Schieber von beiden Seiten montierbar



SCALE 1:1  
Maßstab



NOTES  
Bemerkungen

- 1 TE ORDER-NO.  
TE Bestell-Nr.
- 2 CAVITY NUMBERING  
Kammerbezeichnung
- 3 PRODUCTION DATE  
Produktionsdatum
- 4 LETTER INSERT FOR THE REVISION STATUS OF THE MOULD  
Schriftsatz fuer Aenderungszustand des Werkzeuges
- 5 MATERIAL MARKING ACCORDING TO VDA 260.  
Werkstoffkennzeichnung nach VDA 260
- 6 BULK PACKAGING IN CORRUGATED BOX  
Schuetztgut im Versandkarton
- 7 MOULD CAVITY MARKING  
Nestmarkierung
- 8 TE LOGO  
TE Logo
- 9 SUITABLE COUNTERPART SEE DRAWING 1418483  
Passendes Gegenstueck siehe Zeichnung 1418483
- 10 CAVITIES MATED WITH TAB 2.8 x 0.8 MM (SWS)  
SEE PRODUCT GROUP DRAWING TE - NO.: 1355052  
MAX. WIRE SIZE: 2.5mm² FLR (AWG 12 TXL)
- 11 INTERFACE ACC. DRAWING: 114-18743-1  
Kragenanschluss nach Zeichnung: 114-18743-1
- 12 MATED WITH COVER SEE DRAWING: 1670150, 1670365  
AND COVERS OF GROUP B ON PRODUCT GROUP DRAWING 1563709  
Passend zu Kappe siehe Zeichnung: 1670150, 1670365  
und Kappen der Gruppe B auf Produktgruppenzeichnung 1563709

- 14 SLIDING DISTANCE OF SECONDARY LOCKING  
Verschiebeweg der zweiten Kontaktsicherung
- 14 MALFUNCTION CAUSED BY LAQUER IS NOT COVERED  
BY TE WARRANTY  
Funktionsbeeintraechtigung durch Lackieren. Liegt nicht  
im Einfluss und Gewaehrleistungsumfang von TE
- 14 SEALING SURFACE CUT-OFF  
Dichtflaeche Blechausschnitt
- SURFACE ROUGHNESS Ra MAX. 1.8µm OR LESS FOR METAL PARTS.  
Werkzeugoberflaeche Ra Max. 1.8µm oder weniger fuer Metallteile
- SURFACE ROUGHNESS MIN. VDI 3400 - CLASS 24 FOR PLASTIC PARTS.  
Werkzeugoberflaeche Min. VDI 3400 - Class 24 fuer Kunststoffteile.
- THE FLATNESS MUST BE WITHIN THE TOLERANCE OF THE SHEET.  
THEREFORE WITHIN (±0.1MM).  
Die Ebenheit muss innerhalb der Toleranz des Blechs liegen (±0.1mm).
- NO SINK MARKS, EJECTOR. DRAFT. DENTS. SCRATCHES.  
RECESSES ON THE SEALING AREA ALLOWED.  
Keine Einfallstellen, Auswerfer, Ausformschraegen, Delle,  
Kratzer, Absaeetze zulassig.

ITEM NO	DESCRIPTION	MATERIAL	COLOUR
1	2POS. TAB HOUSING, CODE "A" 2pos. Flachsteckergewaeuse, Kod. "A"	BLACK GRY	
1	2POS. TAB HOUSING, CODE "A" 2pos. Flachsteckergewaeuse, Kod. "A"	GRY	
1	2POS. TAB HOUSING, CODE "C" 2pos. Flachsteckergewaeuse, Kod. "C"	GREEN	
1	2POS. TAB HOUSING, CODE "D" 2pos. Flachsteckergewaeuse, Kod. "D"	BLUE	
2	2POS. TAB HOUSING, CODE "B" 2pos. Flachsteckergewaeuse, Kod. "B"	YELLOW	
3	SEAL FOR SECONDARY LOCKING Dichtung fuer zweite Kontaktsicherung	MVD	WHITE
4	AXIAL SEAL 20x24 Axialdichtung 20x24	MVD	GREEN

4-1703841-1	J	2	D	-	-	1	1	1	1	4
3-1703841-1	J	2	C	-	-	1	1	1	1	3
2-1703841-1	J	2	B	-	1	-	1	1	1	2
1-1703841-1	J	2	A	1	-	-	1	1	1	1

TE ORDER-NO. REV. NO. OF POS. CODE QUANTITY ITEM NO

TE Bestell-Nr. Polzahl Kodierung Stueck ASSY

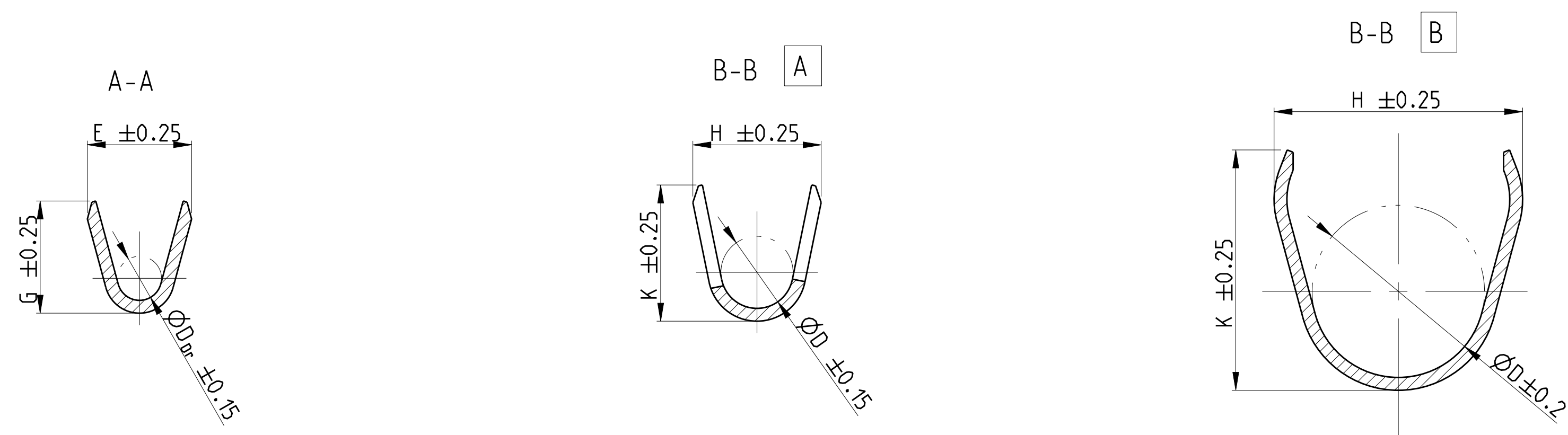
THIS DRAWING IS A CONTROLLED DOCUMENT. DATE OF IMPLEMENTATION: 23 JAN 2008. APPROVAL: J. Grandzow. ALL RIGHTS RESERVED. ALL RIGHTS RESERVED. ALL RIGHTS RESERVED.

OWNER: S. Jaeger, 23 JAN 2008. CHG: J. Grandzow, 24 JAN 2008. APPV: J. Grandzow, 24 JAN 2008.

NAME: 2POS. TAB 2.8x0.8. TAB HSG. ASSY. PRODUCT SPEC: 108-94.020. HEAVY DUTY SEALED CONNECTOR SERIES - GROUP A (2).

SIZE: A1. CAGE CODE: 00779. DRAWING NO.: 1703841. WEIGHT: 15g. CUSTOMER DRAWING: /KUNDENZEICHNUNG. SCALE: 2:1. SHEET: 1 OF 1. REV: J2.

### STRIP FORM Bandware

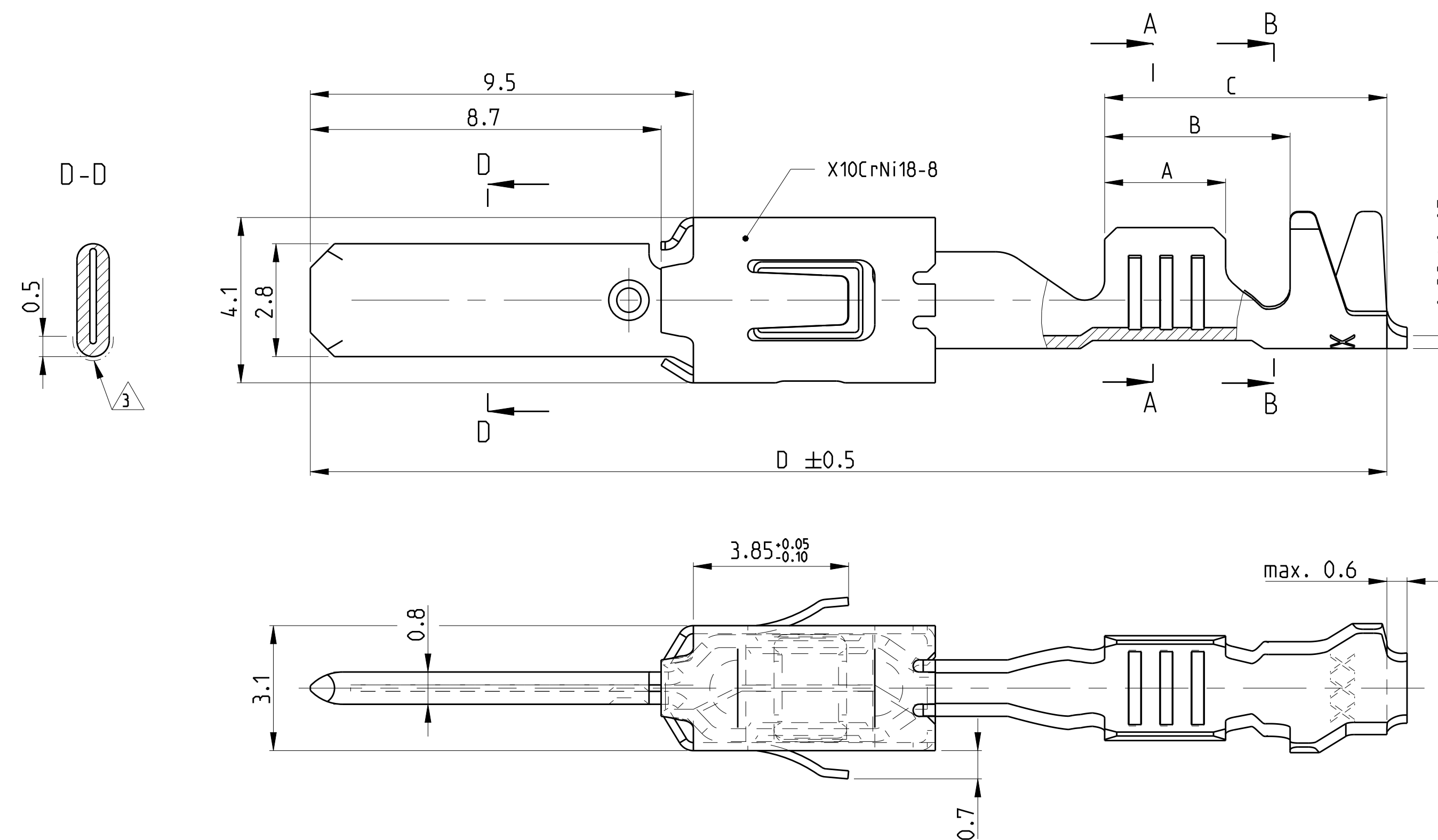


- 1 CONTACT AREA PRE SILVER MIN. 3µm  
CANTILEVER SPRING PLAIN  
Kontaktzone vorversilbert min. 3µm  
Ueberfeder blank
- 2 CONTACT BODY NI-PLATING MIN. 0.5µm; CONTACT AREA PRE-GOLD MIN. 0.6µm  
OVER NICKEL; CRIMP AREA PRE-TIN  
CANTILEVER SPRING PLAIN  
Kontaktkoerper vernickelt min. 0.5µm; Kontaktzone vorvergoldet min. 0.6µm ueber Nickel  
Crimpzone vorverzinkt; Ueberfeder blank
- 3 IN THIS AREA CRACK SHAPING AT THE SURFACE PERMISSIBLE  
In diesem Bereich Rissbildung in der Oberflaeche zulassig
- 4 PRE-TIN MIN. 1µm; CANTILEVER SPRING PLAIN  
vorverzinkt min. 1µm; Ueberfeder blank

- 5 AWG 12 TXL 828905-1 OR / oder 282536-1  
AWG 12 GXL 638865-1
- 6 ATTENTION! CONSTRUCTION OF THE CONTACT CAVITY IN THE AREA OF THE SINGLE WIRE SEAL IS  $\phi 6.4^{+0.1}_{-0.05}$   
Achtung! Die Kammer ist im Bereich der Einzeldichtung auf  $\phi 6.4^{+0.1}_{-0.05}$  auszuliegen
- 7 PUNCHED WITH VOLATILIZING STAMPING-OIL  
Gestanz mit verfluechtigendem Stanzoeel

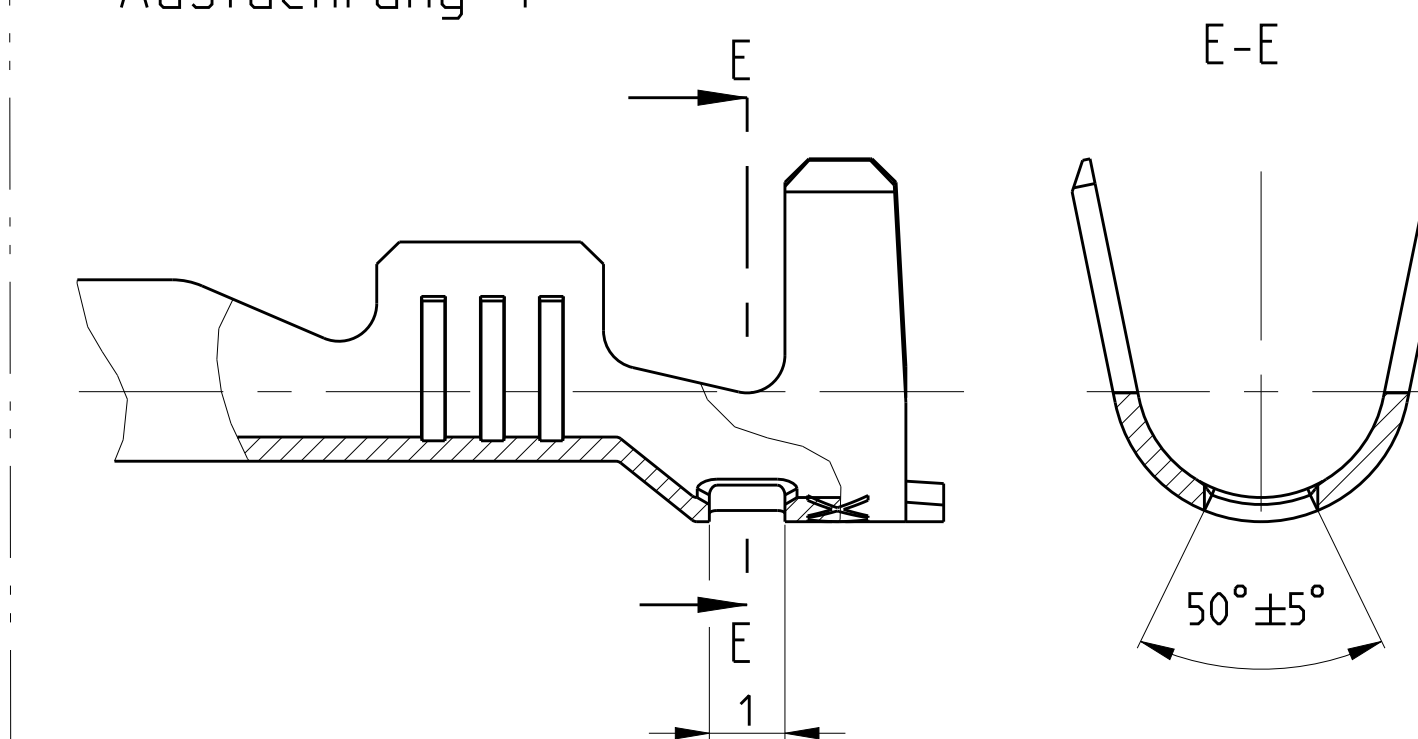
### FLR-/FLK-WIRE FLR-/FLK-Leitung

#### DESIGN 1 Ausfuehrung 1

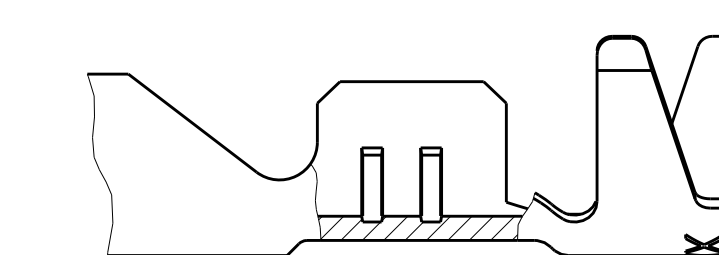


### SINGLE WIRE SEAL Einzeldichtungssystem

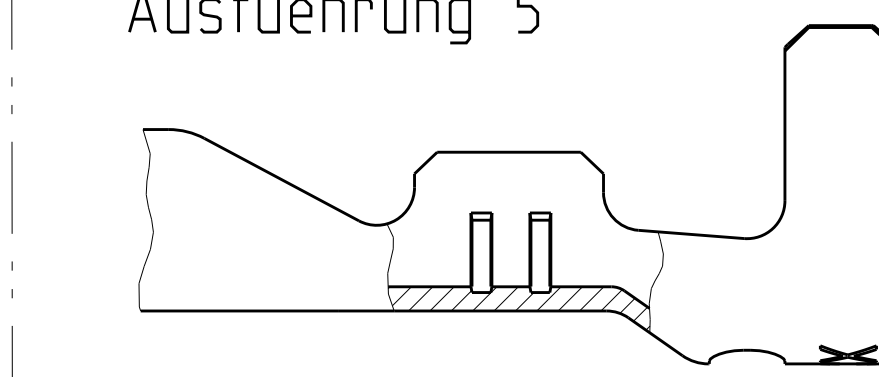
#### DESIGN 4 Ausfuehrung 4



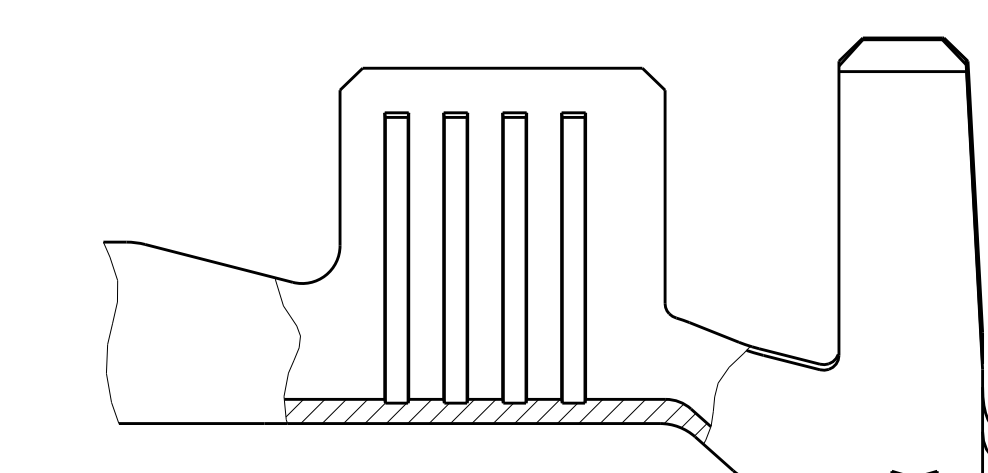
#### DESIGN 2 Ausfuehrung 2



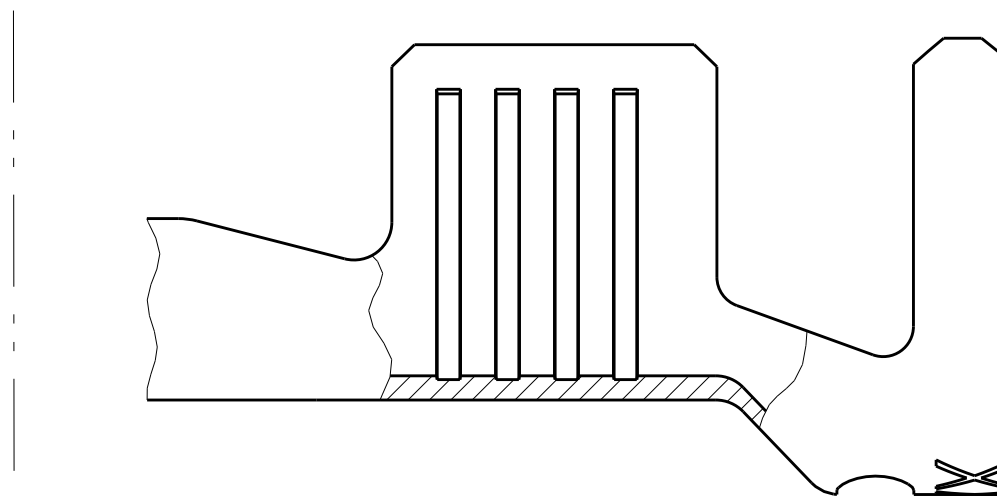
#### DESIGN 5 Ausfuehrung 5



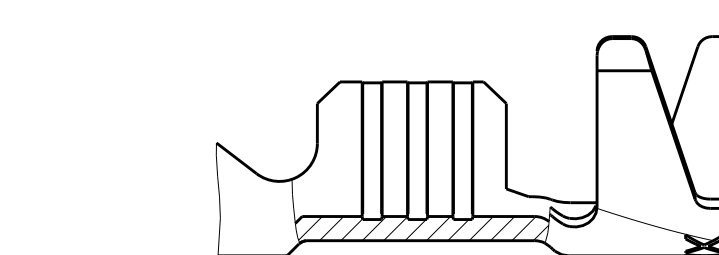
#### DESIGN 3 Ausfuehrung 3



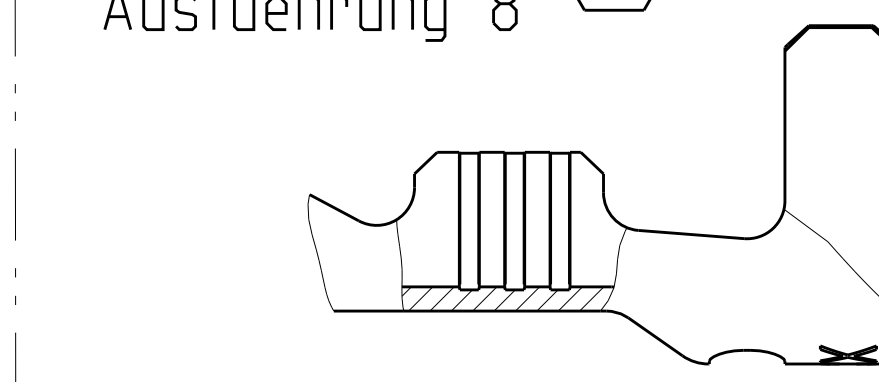
#### DESIGN 6 Ausfuehrung 6



#### DESIGN 7 Ausfuehrung 7



#### DESIGN 8 Ausfuehrung 8



TE ORDER-NO.	DESIGN REV	MATERIAL	SURFACE	DGB	INSULATION	STRIP FORM		APPLICATION TOOL	HAND TOOL	TE ORDER-NO.	TE ORDER-NO.	A	B	C	D
						WIRE CRIMP	INSUL. CRIMP								
1-1719504-2	A	4	CuSn4	12 AWG	max. 3.0	E = 4.0 G = 4.2 D <sub>Dr</sub> = 2.0	H = 5.3 K = 5.0 D = 3.6	1852291-3	-	3.5	6.0	7.6	26.8	828922-1	
3-968947-1	A	4	CuSn0.20	FLR	max. 3.7	E = 4.5 G = 4.7 D <sub>Dr</sub> = 2.3	H = 6.2 K = 6.0 D = 4.3	MQC APPLICATOR 2-541537-2	539635-1 MATRIZE : 539727-2	4.3	6.9	8.5	28.5	828985 (Ø6.4)	828986-1
2-968947-2	A	6	CuFe	FLR	max. 3.0	E = 3.6 G = 3.8 D <sub>Dr</sub> = 1.7	H = 5.3 K = 5.0 D = 3.6	MQC APPLICATOR 2-878560-2	734440-1	3.5	6.0	7.6	26.8	828905 (Ø5.0)	
1-968947-2	A	6	CuSn4	FLR	max. 2.1	E = 2.6 G = 2.9 D <sub>Dr</sub> = 1.2	H = 5.0 K = 4.8 D = 3.3	MQC APPLICATOR 2-878559-2	734438-1	3.0	5.4	7.0	26.8	828904 (Ø5.0)	828922-1
1-968947-1	A	6	CuSn4	FLR	max. 2.1	E = 2.1 G = 2.1 D <sub>Dr</sub> = 0.8	H = 4.7 K = 4.5 D = 3.2	MQC APPLICATOR 2-878558-2	539635-1 MATRIZE : 539737-2	2.5	4.9	6.5	26.8	828904 (Ø5.0)	
2-968946-1	A	3	CuSn0.20	FLR	2.7 - 3.7	E = 4.5 G = 4.7 D <sub>Dr</sub> = 2.3	H = 5.7 K = 5.9 D = 3.3	MQC APPLICATOR 2-541534-2	539635-1 MATRIZE : 539723-2	4.3	6.6	8.5	28.5		
2-962843-3	C	1	CuFe	FLK	2.4 - 3.7	E = 3.6 G = 3.8 D <sub>Dr</sub> = 1.7	H = 5.5 K = 5.7 D = 3.2	MQC APPLICATOR 2-878552-2	734417-3	3.6	5.2	8.9	28.6		
2-962843-2	C	1	CuSn4	FLR	2.1 - 2.9	E = 3.6 G = 3.8 D <sub>Dr</sub> = 1.7	H = 4.3 K = 4.5 D = 2.6	MQC APPLICATOR 2-878551-2	734417-2	3.6	5.2	8.2	27.9		
2-962842-3	E	1	CuFe	FLR	1.4 - 2.1	E = 2.6 G = 2.8 D <sub>Dr</sub> = 1.1	H = 3.2 K = 3.4 D = 1.8	MQC APPLICATOR 2-878550-2	734417-1	3.0	4.6	7.0	26.7		
2-962842-2	F	1	CuSn4	FLR	1.3 - 1.6	E = 2.1 G = 2.1 D <sub>Dr</sub> = 0.8	H = 2.9 K = 2.9 D = 1.4	MQC APPLICATOR 2-878549-2	734538-1	2.5	3.7	5.8	25.5		

THIS DRAWING IS A CONTROLLED DOCUMENT. DATE: 14 JUN 1999. DRAWN BY: K. Gerlach. CHECKED BY: M. Bleicher. APPROVED BY: [Signature].

PRODUCT GROUP DRAWING FOR TAB 2.8x0.8. PRODUCT GRUPPENZEICHNUNG fuer Flachstecker 2.8x0.8.

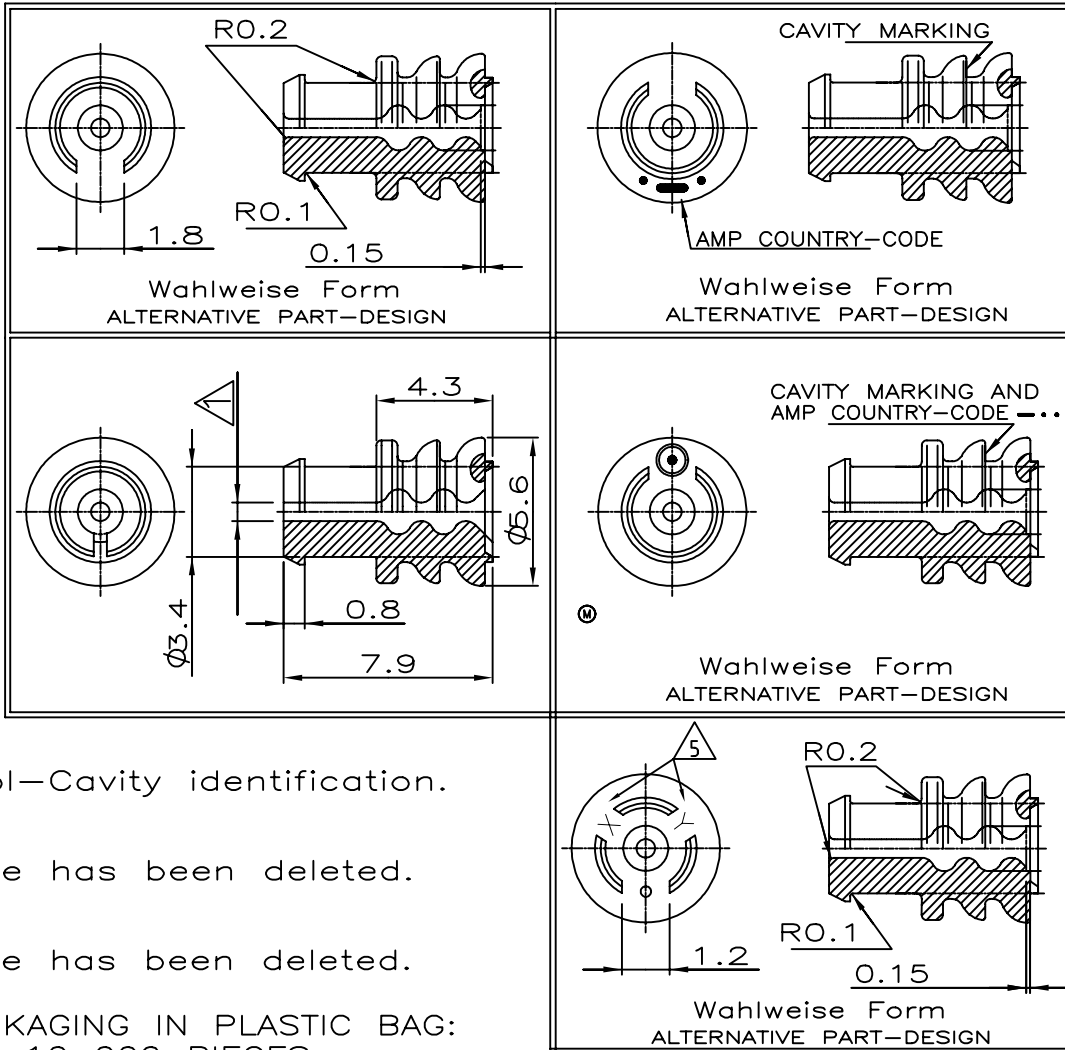
Customer Drawing. SCALE: 10:1. SHEET: 1 of 1.

NUMMER	828904
VERWENDET FÜR	
WAR NR.	87-9398-50

ÄNDERUNGEN, DIE DEM  
TECHNISCHEN FORT-  
SCHRITT DIENEN, BE-  
HALTEN WIR UNS VOR

REVISIONS				
P	LTR	DESCRIPTION	DATE	APVD
	M5	Alternate CAV.ID format added.	11NOV2025	BV GB

M 1:1



- 5 Tool-Cavity identification.
- 4 Note has been deleted.
- 3 Note has been deleted.
- 2 PACKAGING IN PLASTIC BAG:  
QTY 10 000 PIECES
- 1 Für Isolationsø 1.2-2.1 mm

TE Connectivity. All Rights Reserved.

828904-3	4	M	SILICON SHORE A 50 <sup>+</sup> lubriziert	hellblau
828904-2	3	M		
828904-1	2	M		

CAD-ORIGINAL  
ZEICHNUNG NICHT ÄNDERN

Ⓢ	BESTELL-NR.	REV	WERKSTOFF	OBERFLÄCHE	ZEICHNUNG GÜLTIG AB .....							
DIMENSIONS: mm			DWN H.Bouda	16 MAY 88	MATERIAL	FINISH						
TOLERANCES UNLESS OTHERWISE SPECIFIED:			CHK W. PFEFFER	17 MAY 88	TE Connectivity							
0 PLC ± -			APVD	-					NAME Einzeldichtung (DIA 5.6)			
1 PLC ± 0.3			PRODUCT SPEC	-								
2 PLC ± -			APPLICATION SPEC	-	SIZE	CAGE CODE	DRAWING NO	RESTRICTED TO				
3 PLC ± -			WEIGHT	0,000000	A4	00779	Ⓒ-828904	-				
4 PLC ± -			CUSTOMER DRAWING			SCALE	5:1	SHEET	1 OF 1			
ANGLES ± -						REV			M5			

