

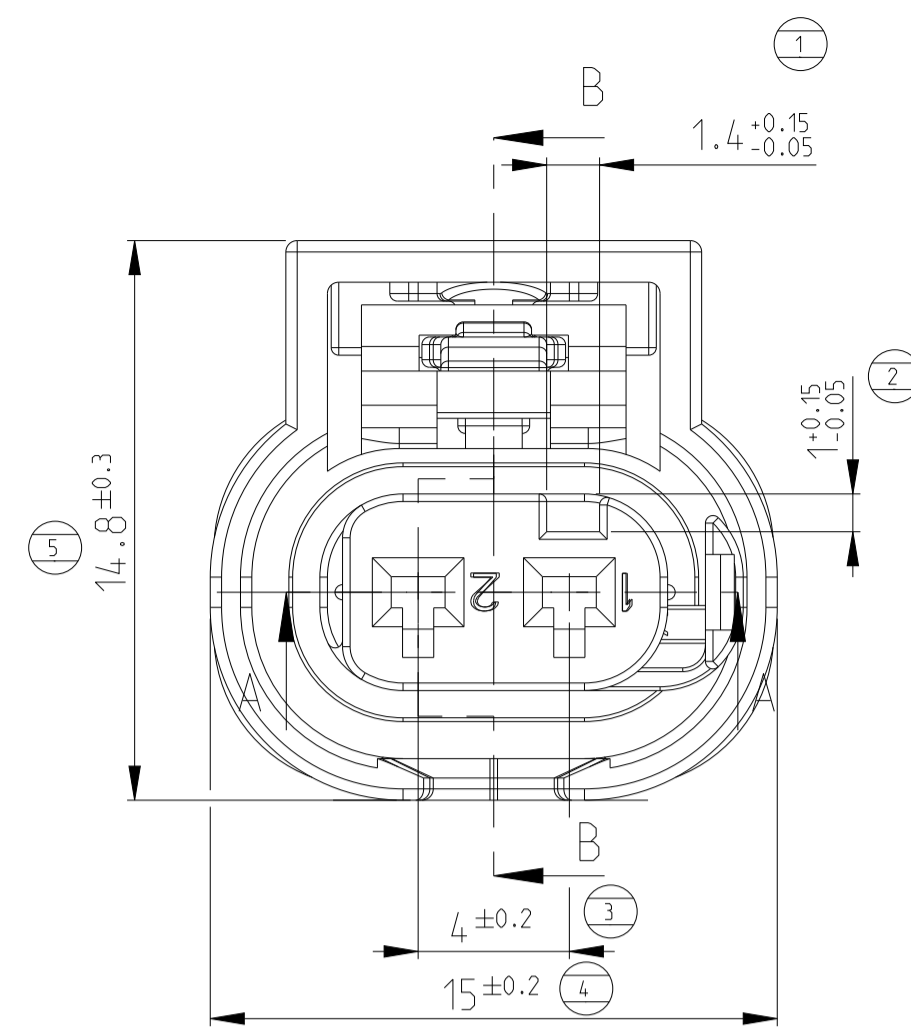
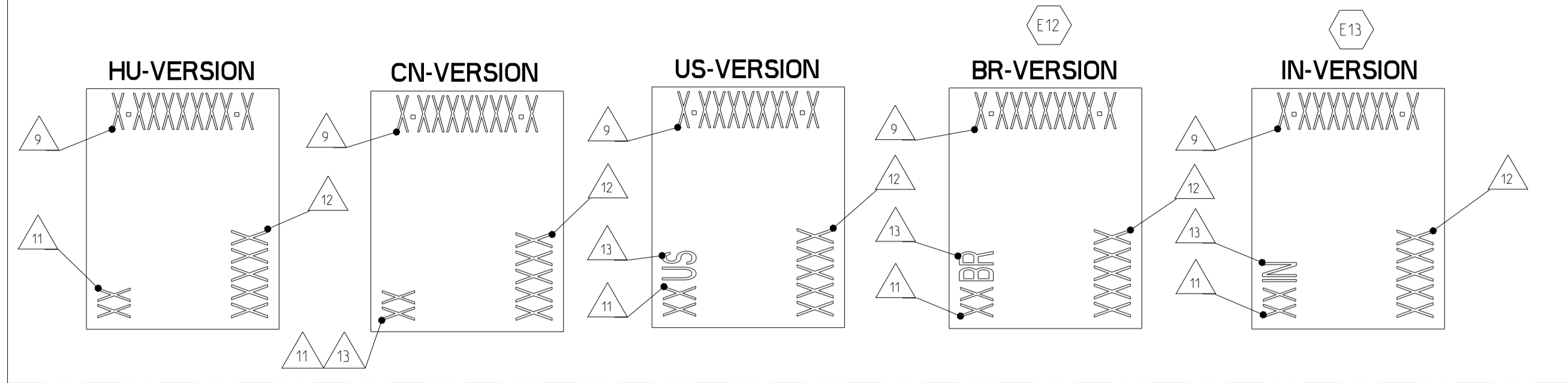
# M 2-1718643-1K



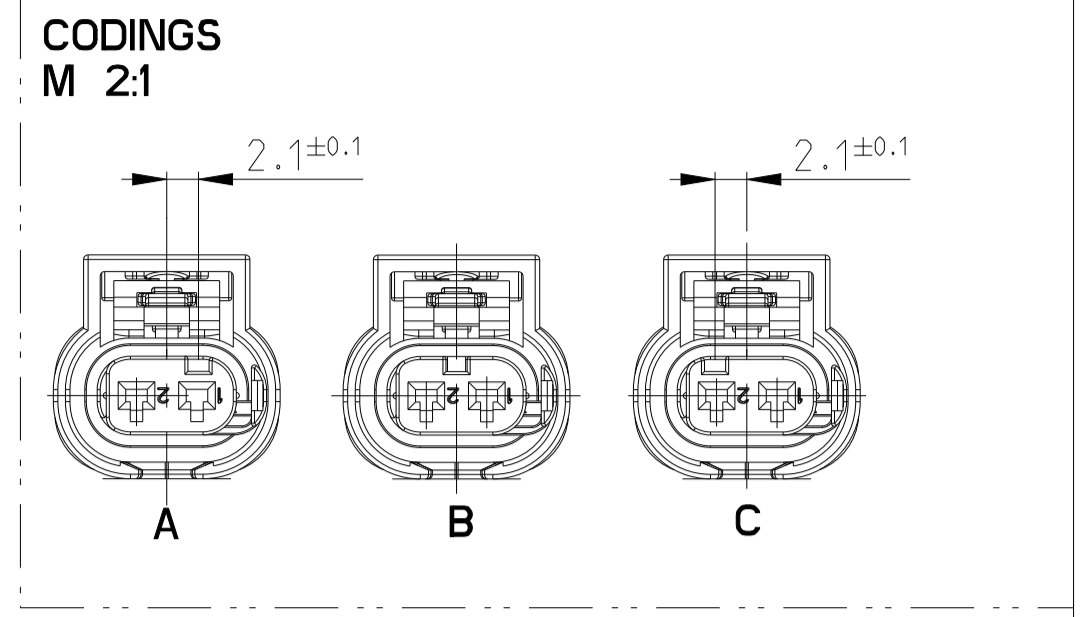
*Proseguire nella pagina successiva per visualizzare la scheda tecnica dei componenti*

Revisione	Prodotto
REV.00 15/04/2026	OEM

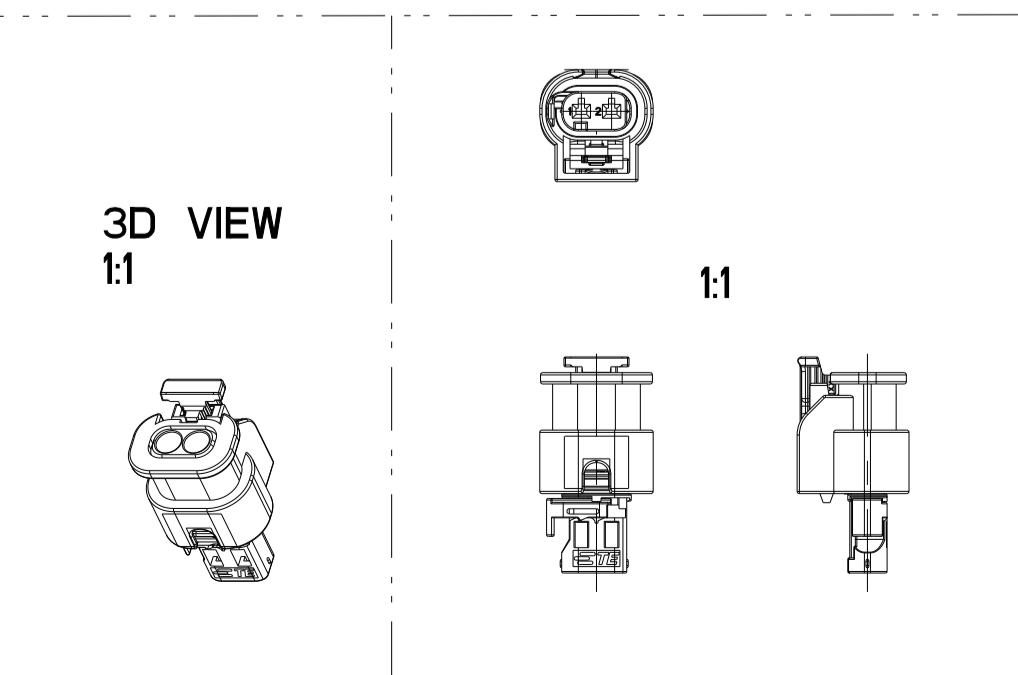
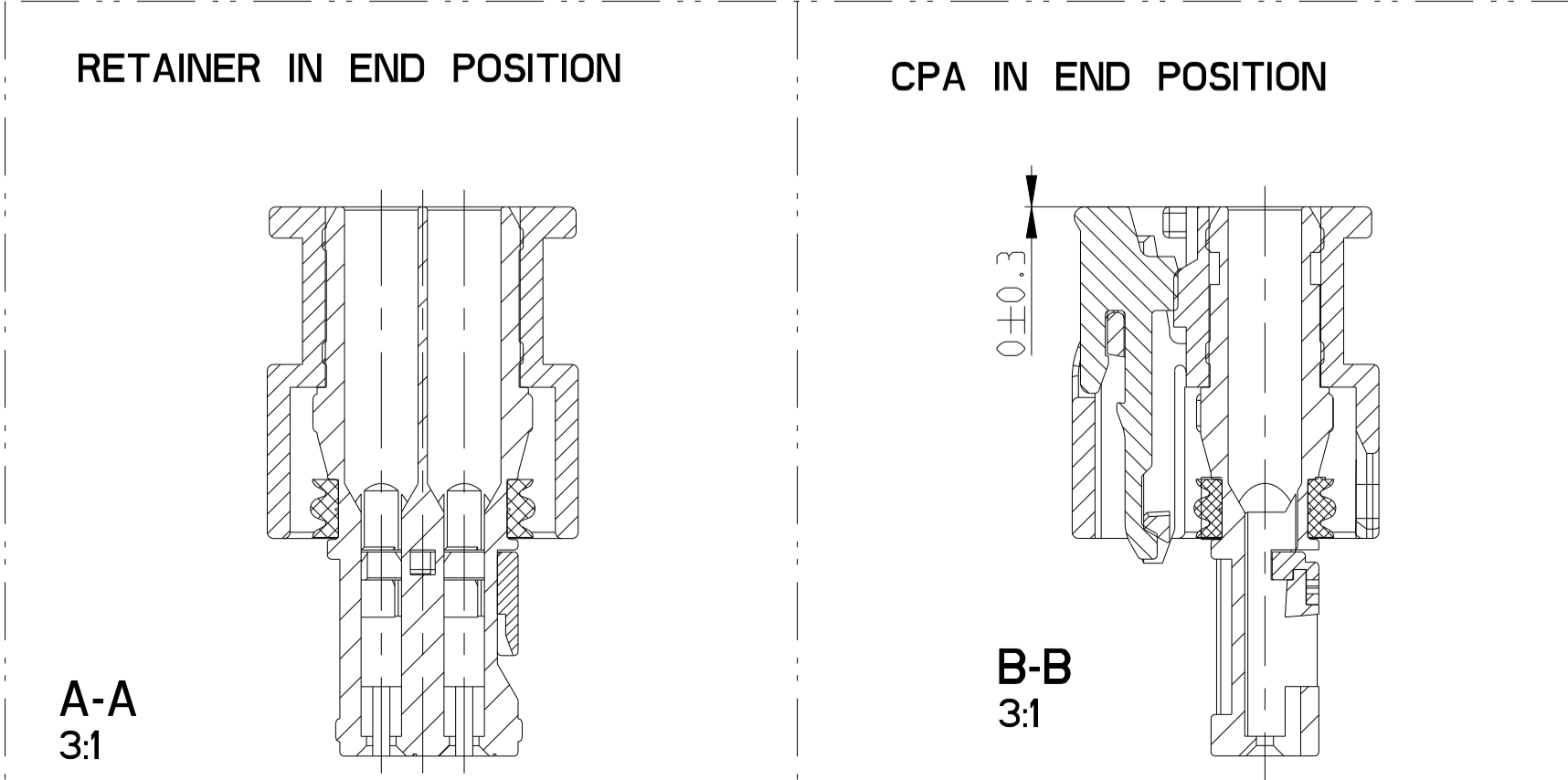
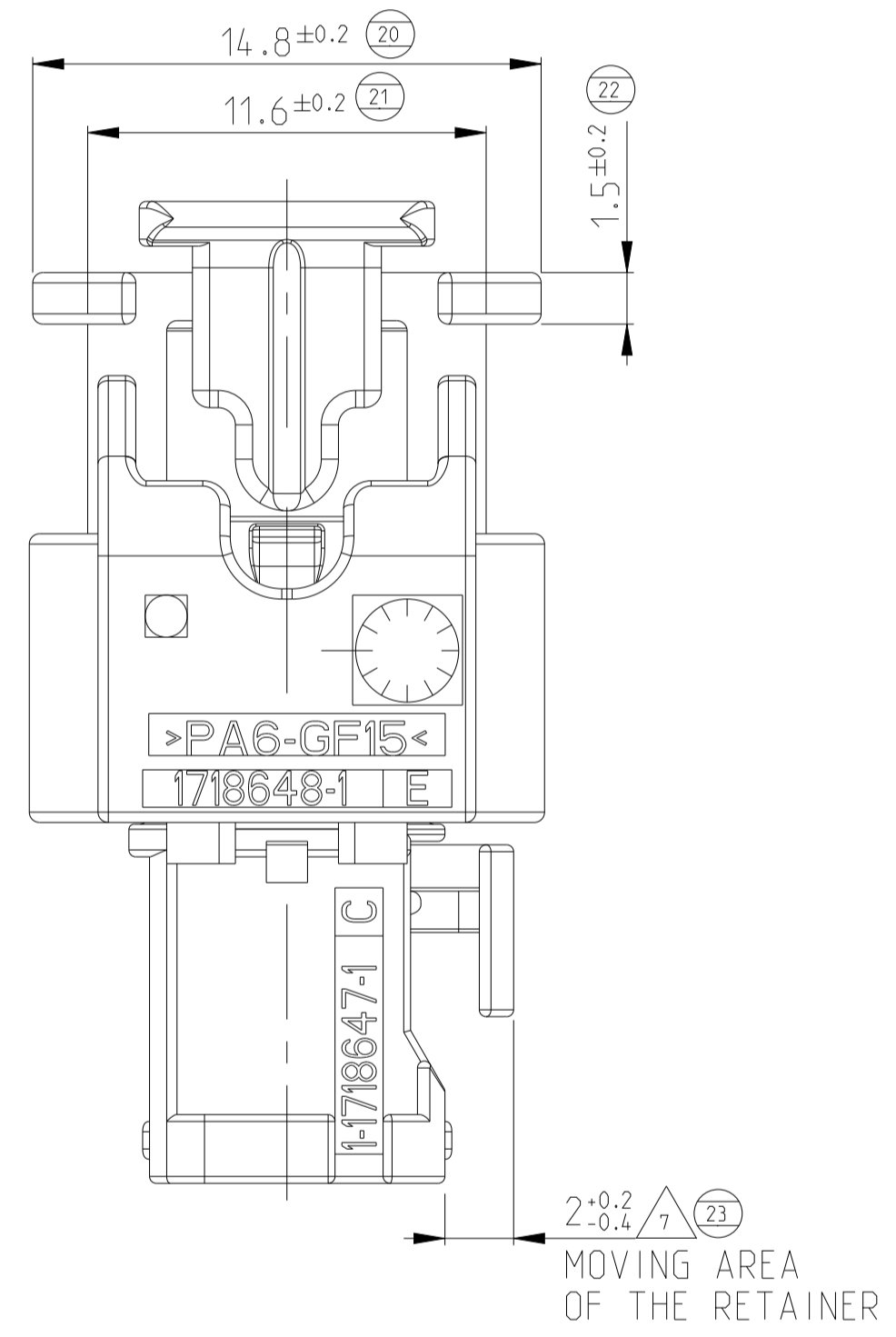
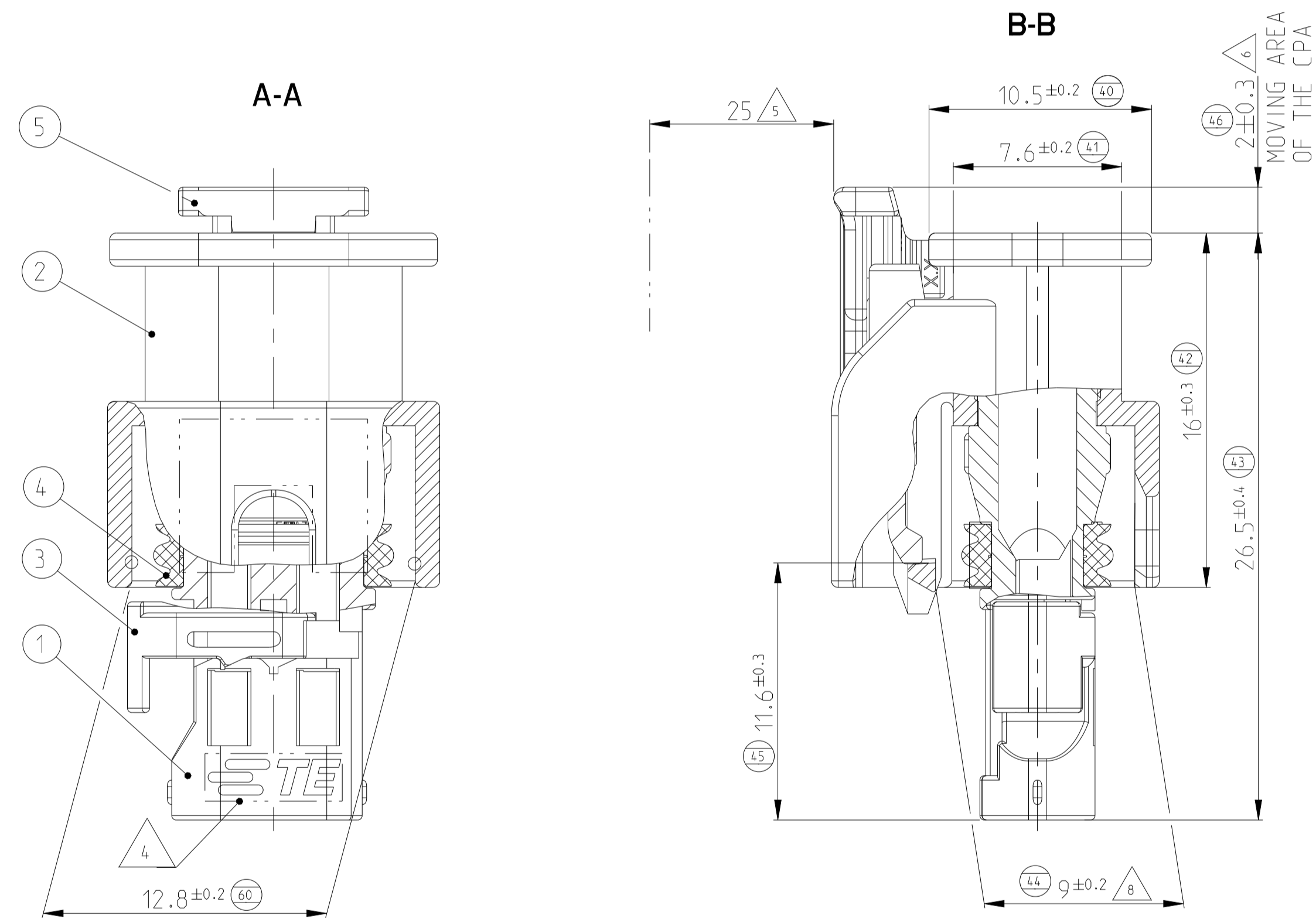
PRINT: 5:1



REVISIONS				
P	LTN	DESCRIPTION	DATE	APVD
E10		LASER PRINT UPDATED	04DEC2017	Sz LSz
E11		DIVERGENT MARKING ADDED	18JUL2018	SZn LSZ
E12		LASER PRINT UPDATED WITH BR VERSION	19NOV2018	SZn LSZ
E13		DIVERGENT MARKING ADDED	13FEB2025	SZn LSZ



- 1 AREA FOR PRINT
- 2 USABLE CONTACTS MCON 1.2 LL  
SEE TE-NO. 1452674. SINGLE WIRE SYSTEM
- 3 MAX. WIRE SIZE RANGE 1.5 mm<sup>2</sup> FLR PERMITTED WITH COMPATIBLE SW'S FOR CAVITY-Ø 3.55MM FOR PERMISSIBLE CURRENT CARRYING CAPACITY OF THE SINGLE CONTACT. MAX OPERATING TEMPERATURE, VIBRATION RESISTANCE SEE PRODUCT SPECIFICATION NO.108-18782
- 4 SUPPLIER-MARK
- 5 SPACE OF ACTIVITY
- 6 SUPPLY CONDITION: CPA IN PRELOCKED POSITION
- 7 SUPPLY CONDITION: RETAINER IN PRELOCKED POSITION
- 8 WARPAGE PERMITTED TO MAX. -0.5mm
- 9 TE ORDER-NO.
- 10 ACCORDING TO INTERFACE DRAWING  
SEE TE-NO. 114-18679-3
- 11 ASSEMBLY LINE SEGMENT IDENTIFICATION
- 12 DATE CODE (DDDDYY)
- 13 DIVERGENT MARKING FOR PARTS PRODUCED IN DIFFERENT REGIONS

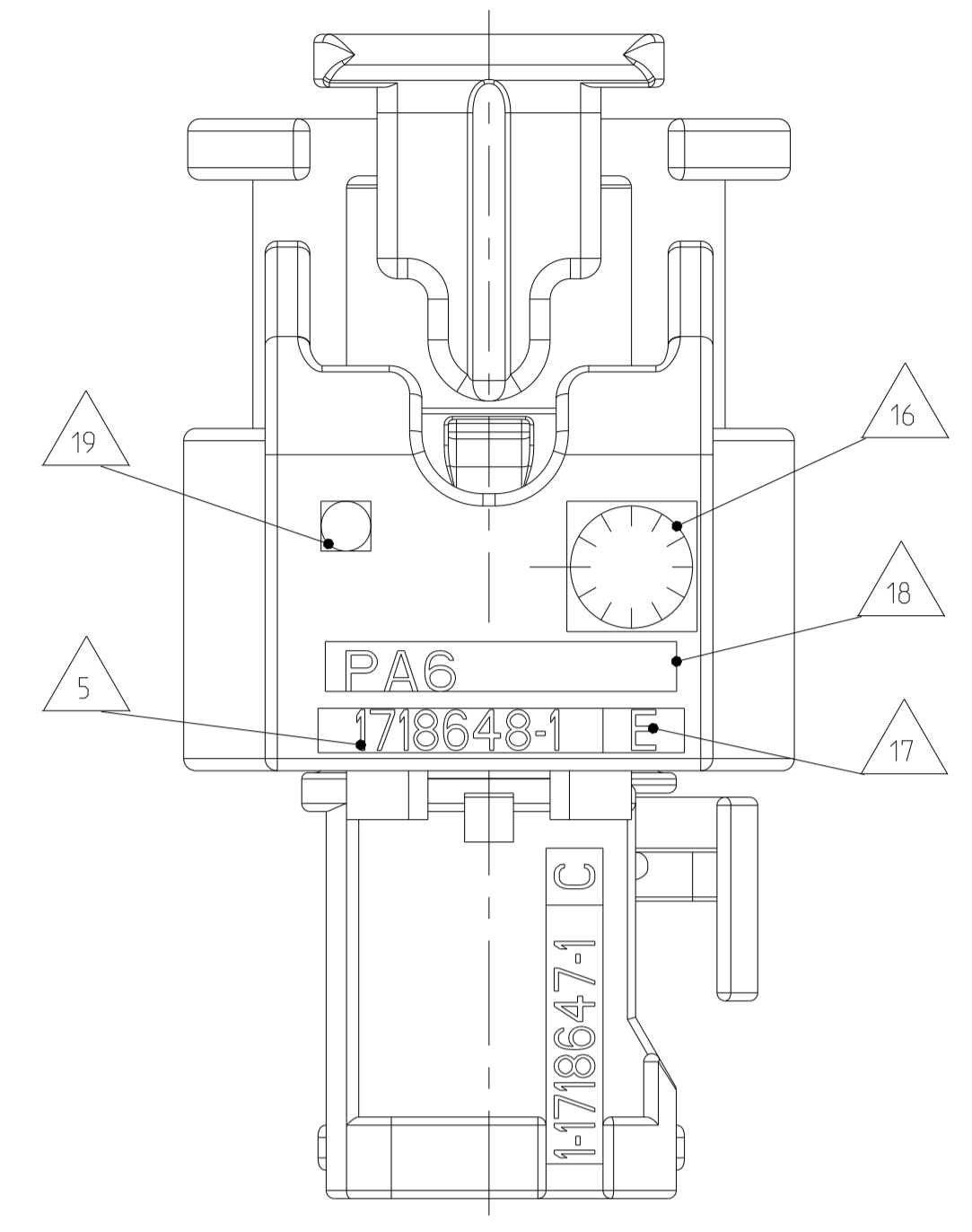


THIS DRAWING IS A CONTROLLED DOCUMENT.		OWN: C. L'Abbate 180CT2004	<b>TE</b> TE Connectivity																			
DIMENSIONS: mm		CHK: A. Schroevel 13JAN2005																				
TOLERANCES UNLESS OTHERWISE SPECIFIED:		APVD: J. Woller	NAME: 2pos. MCON 1.2 - LL Connector Sealed																			
<table border="1"> <tr><td>1</td><td>PLC</td><td>±</td></tr> <tr><td>2</td><td>PLC</td><td>±</td></tr> <tr><td>3</td><td>PLC</td><td>±</td></tr> <tr><td>4</td><td>PLC</td><td>±</td></tr> <tr><td>ANGLES</td><td></td><td>±2°</td></tr> <tr><td>FINISH</td><td></td><td></td></tr> </table>		1	PLC	±	2	PLC	±	3	PLC	±	4	PLC	±	ANGLES		±2°	FINISH			PRODUCT SPEC: 108-18969		SIZE: A
1	PLC	±																				
2	PLC	±																				
3	PLC	±																				
4	PLC	±																				
ANGLES		±2°																				
FINISH																						
MATERIAL: -		APPLICATION SPEC: 114-18861		CAGE CODE: 00779																		
WEIGHT: 2.4 g		DRAWING NO: C=1718643		RESTRICTED TO: -																		
CUSTOMER DRAWING		SCALE: 5:1		SHEET: 1 OF 2																		

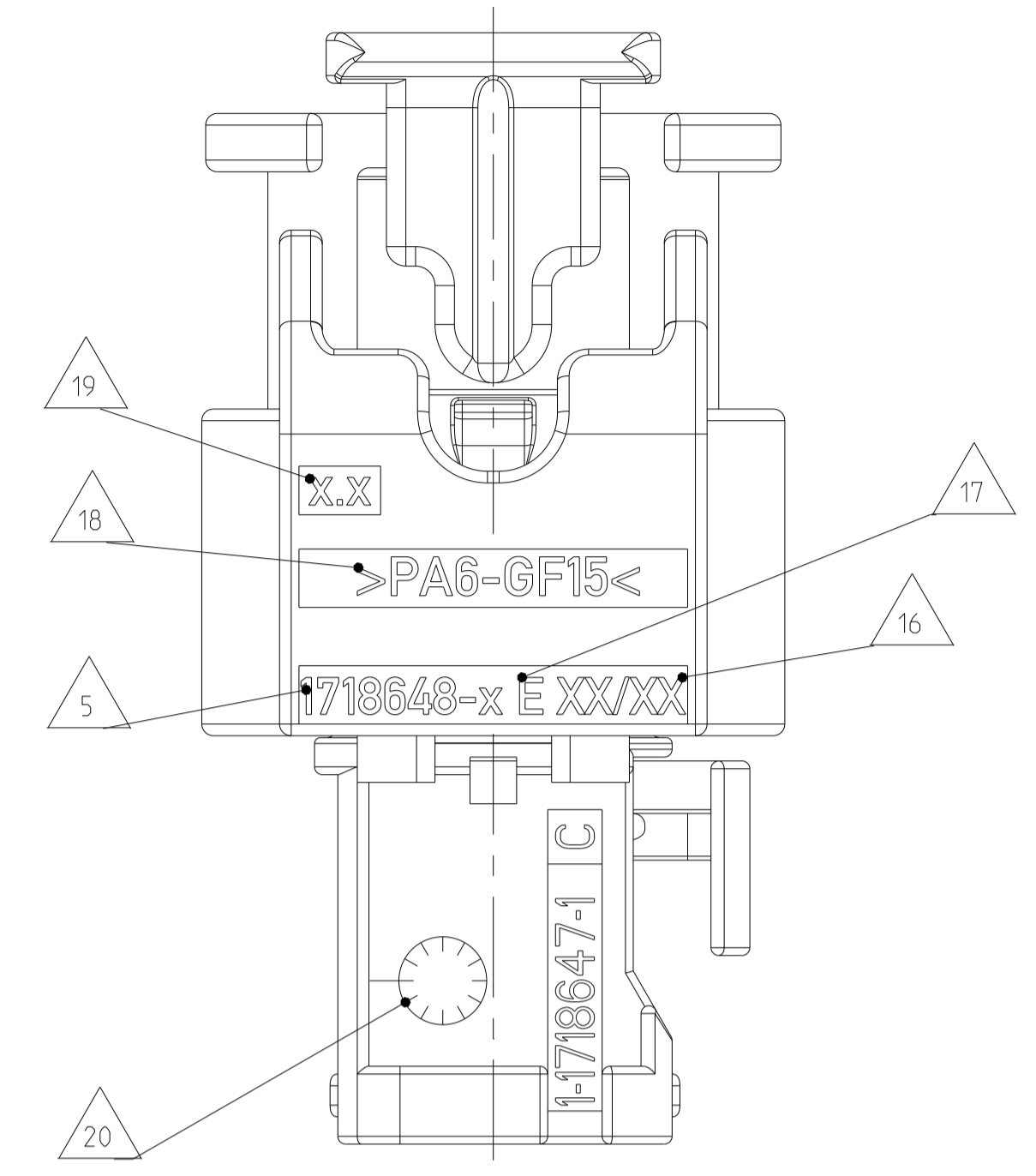
E11

# Divergent marking is allowed for parts from different tools

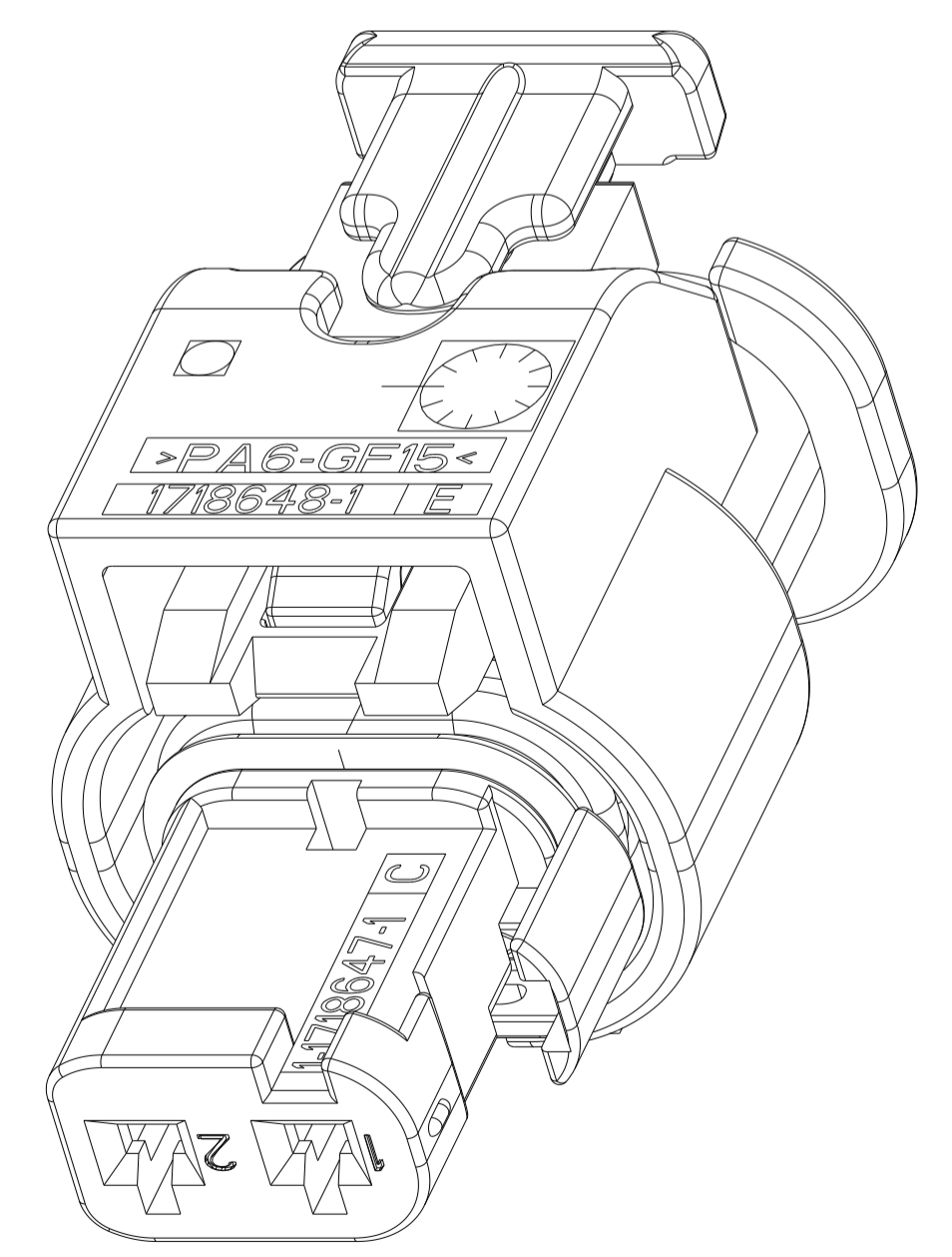
Version 1



E11 Version 2



- 5 TE PART NO.:
- 16 - CIRCULAR DATE INSERT ONLY FOR VERSION 1  
- DATE FORMAT FOR VERSION 2 (YY/MM)
- 17 REVISION, CORRESPONDING TO ACTUAL REVISION
- 18 MATERIAL IDENTIFICATION
- 19 MOULD CAVITY IDENTIFICATION
- 20 DATE INSERT FOR RECEPTACLE HOUSING



TE ORDER-NO.	9	COD	TITLE	REV	QTY	TITLE	MATERIAL	SURFACE/COLOUR	ITEM
3-1718643-4	C	CONNECTOR 2POS.	A	1	CPA	PA46-GF15	RED SIML. RAL 3000	5	
				1	SEAL	MVQ	NATURE	4	
				1	RETAINER	PA66-GF15	VIOLETT SIML. RAL 4006	3	
				1	OUTER HOUSING	PA6-GF15	SULFUR YELLOW SIML. RAL 1016	2	
				1	INNER HOUSING	PA66-GF30	BLUE SIML. RAL 5012	1	
2-1718643-4	B	CONNECTOR 2POS.	A	1	CPA	PA46-GF15	RED SIML. RAL 3000	5	
				1	SEAL	MVQ	NATURE	4	
				1	RETAINER	PA66-GF15	VIOLETT SIML. RAL 4006	3	
				1	OUTER HOUSING	PA6-GF15	SULFUR YELLOW SIML. RAL 1016	2	
				1	INNER HOUSING	PA66-GF30	NATURE	1	
1-1718643-4	A	CONNECTOR 2POS.	A	1	CPA	PA46-GF15	RED SIML. RAL 3000	5	
				1	SEAL	MVQ	NATURE	4	
				1	RETAINER	PA66-GF15	VIOLETT SIML. RAL 4006	3	
				1	OUTER HOUSING	PA6-GF15	SULFUR YELLOW SIML. RAL 1016	2	
				1	INNER HOUSING	PA66-GF30	BLACK RAL 9011	1	
3-1718643-1	C	CONNECTOR 2POS.	A	1	CPA	PA46-GF15	GREY SIML. RAL 7037	5	
				1	SEAL	MVQ	NATURE	4	
				1	RETAINER	PA66-GF15	VIOLETT SIML. RAL 4006	3	
				1	OUTER HOUSING	PA6-GF15	BLACK RAL 9011	2	
				1	INNER HOUSING	PA66-GF30	BLUE SIML. RAL 5012	1	
2-1718643-1	B	CONNECTOR 2POS.	E	1	CPA	PA46-GF15	GREY SIML. RAL 7037	5	
				1	SEAL	MVQ	NATURE	4	
				1	RETAINER	PA66-GF15	VIOLETT SIML. RAL 4006	3	
				1	OUTER HOUSING	PA6-GF15	BLACK RAL 9011	2	
				1	INNER HOUSING	PA66-GF30	NATURE	1	
1-1718643-1	A	CONNECTOR 2POS.	E	1	CPA	PA46-GF15	GREY SIML. RAL 7037	5	
				1	SEAL	MVQ	NATURE	4	
				1	RETAINER	PA66-GF15	VIOLETT SIML. RAL 4006	3	
				1	OUTER HOUSING	PA6-GF15	BLACK RAL 9011	2	
				1	INNER HOUSING	PA66-GF30	BLACK RAL 9011	1	

THIS DRAWING IS A CONTROLLED DOCUMENT.  
DEUTSCH: DIE DIMENSIONEN SIND IN MILLIMETER ANGEBEN. ANDERERWEISE SIND DIE DIMENSIONEN IN ZOLL ANGEBEN. ANDERERWEISE SIND DIE DIMENSIONEN IN ZOLL ANGEBEN. ANDERERWEISE SIND DIE DIMENSIONEN IN ZOLL ANGEBEN.

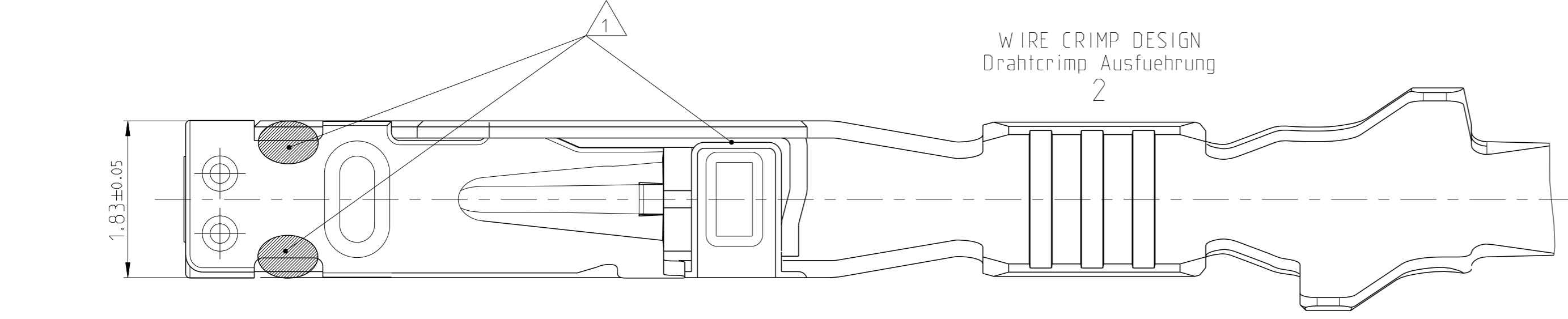
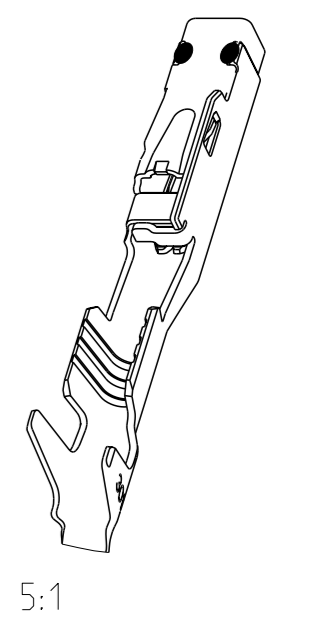
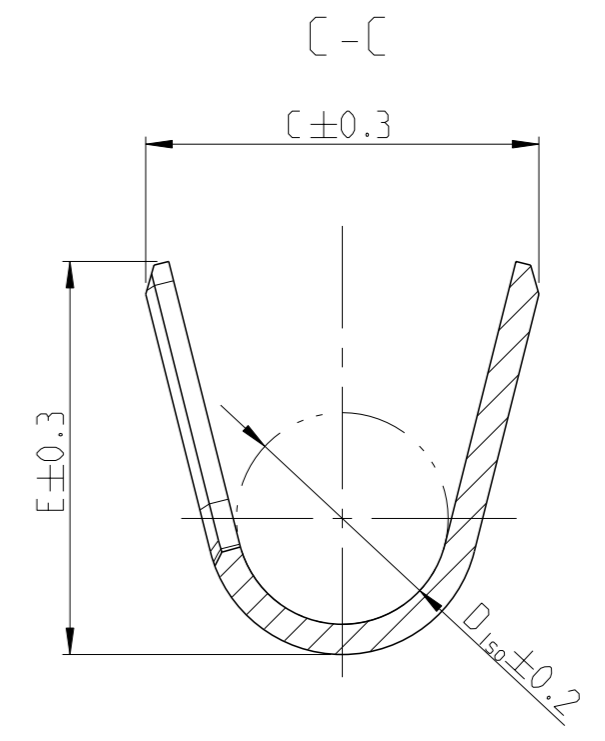
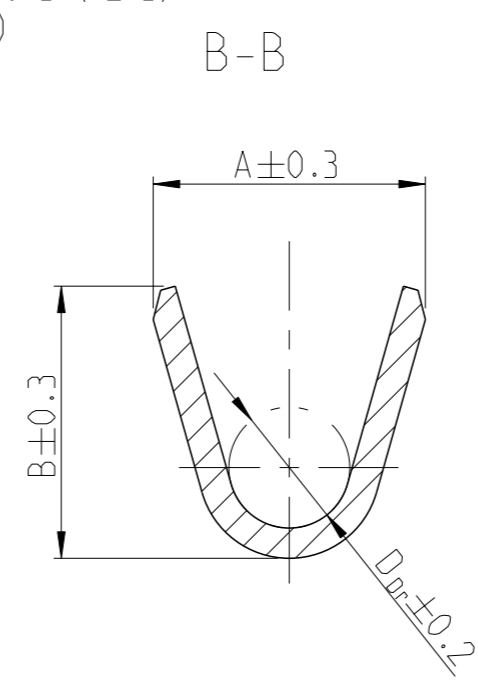
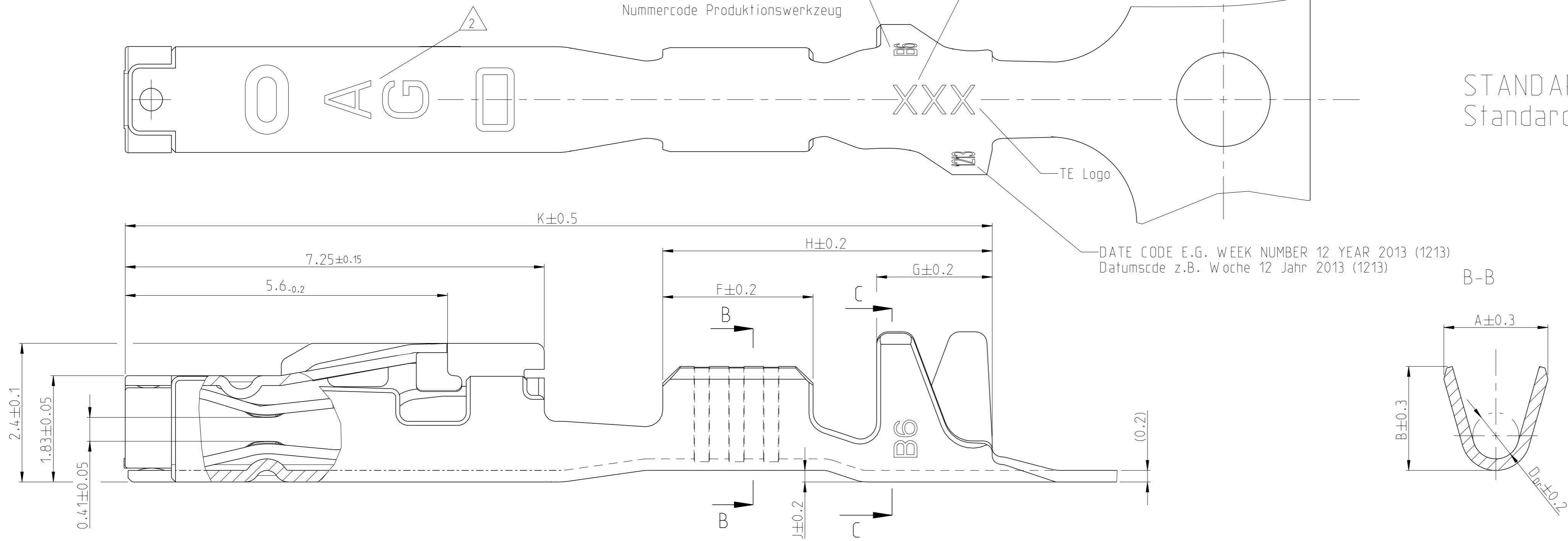
DIMENSIONS: MASSENHEITEN: mm	TOLERANCES UNLESS OTHERWISE SPECIFIED: ALLE DIMENSIONEN	DWG: L'Abbate 180CT2004 CHK: A. Schroeberl 13JAN2005 APVD: J. Woller NAME: 2pos. MCON 1.2 - LL Connector Sealed PRODUCT SPEC: - PRODUCT SPEC: 108-18969 APPLICATION SPEC: - VERARBEITUNGSPEZ.: 114-18861	DATE: 13JAN2005 DRAWING NO.: 1718643 SCALE: 5:1 SHEET: 2 OF 2 REV: E13
------------------------------------	--	---	--

MATERIAL: -  
 FINISH/OBERFLÄCHE/FARBE: -  
 WEIGHT/GEWICHT: 2.4 g  
 CUSTOMER DRAWING: /KUNDENZEICHNUNG

REVISION Aenderungsstand /  
 NUMBER CODE PRODUCTIONTOOL  
 Nummernote Produktionswerkzeug

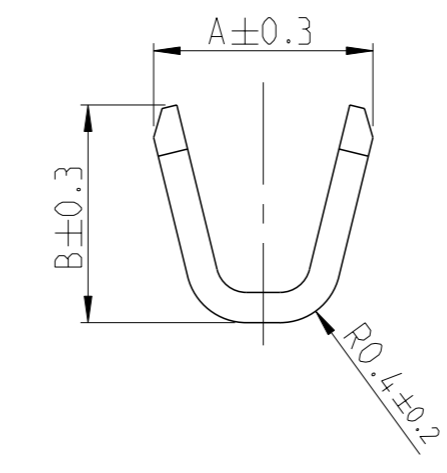
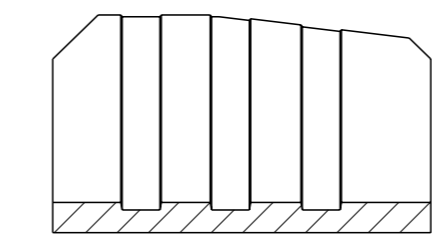
MANUFACTURING LOCATION CODE  
 Kennzahl Produktionsstandort

STANDARD APPLICATION  
 Standard Anwendung

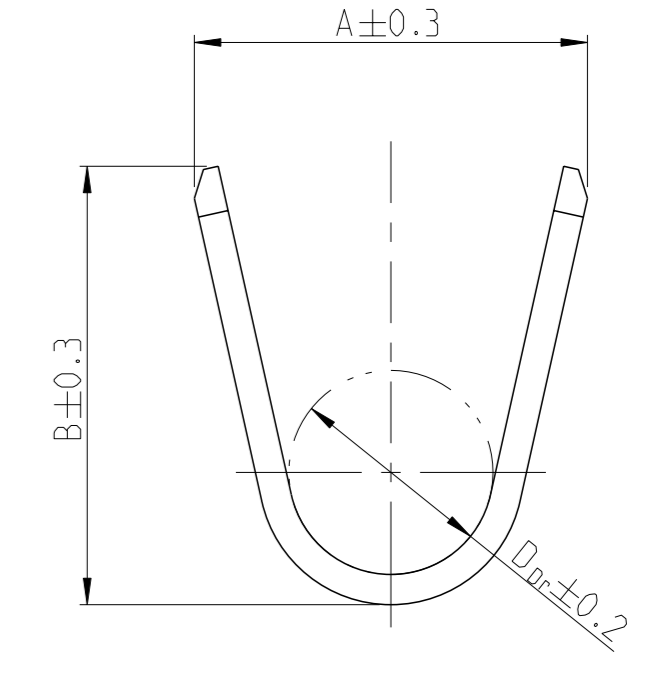
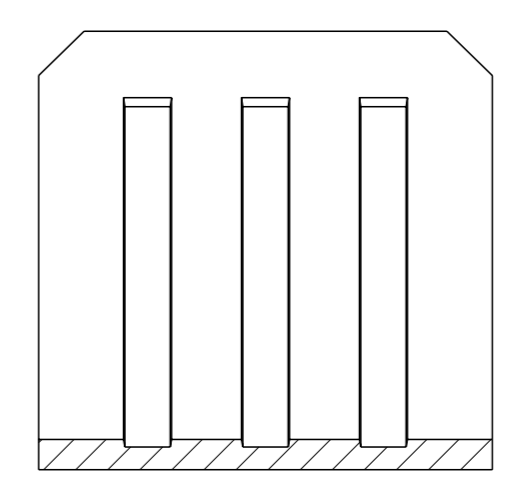


WIRE CRIMP DESIGN  
 Drahtcrimp Ausfuehrung  
 2

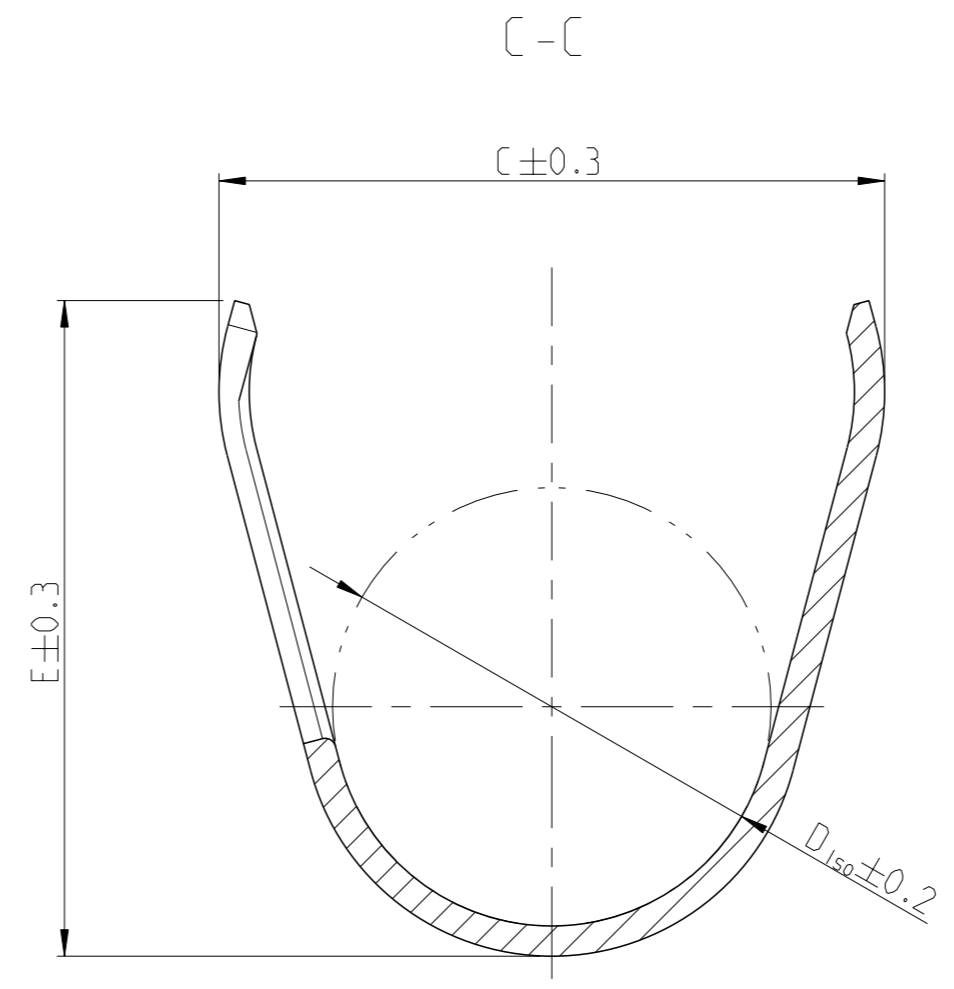
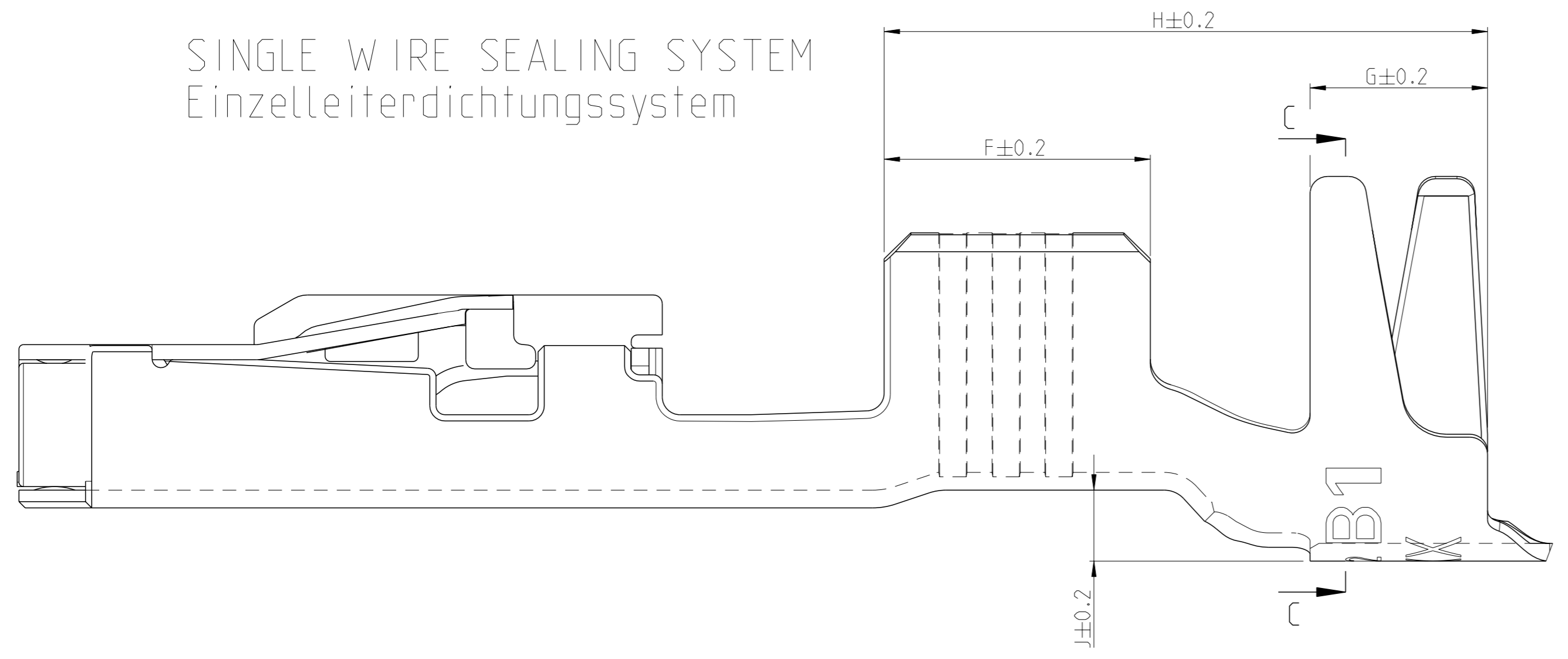
WIRE CRIMP DESIGN  
 Drahtcrimp Ausfuehrung  
 1



WIRE CRIMP DESIGN  
 Drahtcrimp Ausfuehrung  
 3



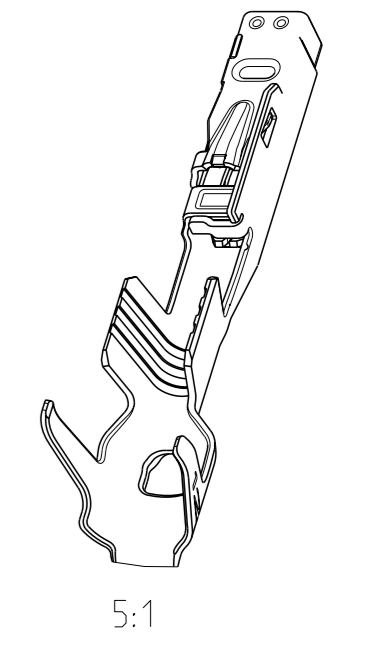
SINGLE WIRE SEALING SYSTEM  
 Einzelleiterdichtungssystem



NOTES  
 Bemerkungen

- 1 LASER WELDED  
 Lasergeschweisst
- 2 STAMPED INDICATOR FOR PLATING:  
 - AU GOLD PLATING  
 - AG SILVER PLATING  
 - TIN PLATING WITHOUT INDICATOR  
 Markierung fuer galvanische Ausfuehrung:  
 - AU vergoldet  
 - AG versilbert  
 - verzinkt: ohne Markierung

3 TO BE USED ON TAB  
 1.2±0.1 x 0.6±0.03 MM  
 geeignet fuer Flachstecker  
 1.2±0.1 x 0.6±0.03 mm



THIS DRAWING IS A CONTROLLED DOCUMENT.		OWN E. Horn 11NOV2011	APV V. Seigel 11NOV2011	NAME MCON 1.2 LL (LOCKING-LANCE)
DIMENSIONS: mm	TOLERANCES UNLESS OTHERWISE SPECIFIED: ±0.2	CHK R. Meier 11NOV2011	PRODUCT SPEC 108-18782	SIZE 114-18464
MATERIAL	FINISH	APV V. Seigel 11NOV2011	APPLICATION SPEC 114-18464	RESTRICTED TO
Customer Drawing		WEIGHT 0.18 g	SCALE 20:1	SHEET 1 of 2
			REV C7	

LOC	DIST	REVISIONS			
A1	-	REV	DATE	OWN	APVD
		1	SEE SHEET 1	-	-

VERSION / Ausführung	REV.	RANGE Bereich	INSULATION-Ø Isolations-Ø (mm)	AWG	mm <sup>2</sup>	BODY Kontakt-körper	SPRING Kontakt-feder	BODY Kontakt-körper	SPRING Kontakt-feder	DESIGN WIRE-CRIMP Ausführung Draht-Crimp	C7											SINGLE WIRE SEAL FOR CAVITY DIAMETER	BLINDPLUG ORDER NO. Blindstopfen Bestell-Nr.	APPLICATION TOOLS Verarbeitungswerkzeuge	
											A	B	D <sub>Dr</sub>	C	E	D <sub>ISO</sub>	F	G	H	J	K				
STANDARD APPLICATION Standardanwendung	2141970-3	A	0.13-	0.95-	-	0.13	CuSn4	CuNiSi	8	7	1	1.5	1.4	-	4.0	3.9	2.6	2.5	1.9	6.2	0.6	16	SEE APPLICATION SPEC. 114-18464 siehe Verarbeitungsspez. 114-18464		
	2141970-2	A	0.22	0.95-	-	0.17				6	1	1.5	1.4	-	4.0	3.9	2.6	2.5	1.9	6.2	0.6	16			
	2141970-1	A	9	1.2	-	0.22				5	1	1.5	1.4	-	4.0	3.9	2.6	2.5	1.9	6.2	0.6	16			
	7-1452665-3	A	0.25-	1.1-	-	0.25				7	2	1.8	1.8	0.8	4.2	4.3	2.6	2.6	2.0	6.4	0.8	16			
	7-1452665-2	A	0.25-	1.1-	24	-				6	2	1.8	1.8	0.8	4.2	4.3	2.6	2.6	2.0	6.4	0.8	16			
	7-1452665-1	A	0.35	1.75	22	-				5	2	1.8	1.8	0.8	4.2	4.3	2.6	2.6	2.0	6.4	0.8	16			
	7-1452668-3	A	0.5-	1.4-	20	0.5				7	2	2.0	2.1	1.1	4.2	4.3	2.7	2.6	2.0	6.4	0.8	16			
	7-1452668-2	A	0.5-	1.4-	-	0.75				6	2	2.0	2.1	1.1	4.2	4.3	2.7	2.6	2.0	6.4	0.8	16			
	7-1452668-1	A	0.75	1.9	-	0.75				5	2	2.0	2.1	1.1	4.2	4.3	2.7	2.6	2.0	6.4	0.8	16			
	7-1452671-3	A	1-	1.9-	18	-				7	2	2.6	2.9	1.35	4.4	4.3	2.9	3.0	2.0	6.8	0.8	16.55			
	7-1452671-2	A	1-	1.9-	-	1				6	2	2.6	2.9	1.35	4.4	4.3	2.9	3.0	2.0	6.8	0.8	16.55			
	7-1452671-1	A	1.5	2.4	16	-				5	2	2.6	2.9	1.35	4.4	4.3	2.9	3.0	2.0	6.8	0.8	16.55			
7-1452671-1	A	1.5	2.4	-	1.5	5	2	2.6	2.9	1.35	4.4	4.3	2.9	3.0	2.0	6.8	0.8	16.55							

**7- VARIANTS FOR NEW APPLICATIONS**

- NOTES  
Bemerkungen
- 4 ONLY FOR FLR-WIRE SEE DIN 72551, PART 6 AND AWG WIRE ACCORDING DC-SPEC: MS-8288 ; MS-7889 ; MS-9532  
Nur fuer FLR-Leitung nach DIN 72551, Teil 6 und AWG Leitung nach DC-SPEC: MS-8288 ; MS-7889 ; MS-9532
  - 5 PRE TIN SnAg 1.0 TO 3.0µm  
Vorverzinnt SnAg 1.0 bis 3.0µm
  - 6 SPRING GOLD PLATED MIN. 0.8µm (only contact area)  
Kontaktfeder galv. vergoldeft min.0.8µm (nur Kontaktzone)
  - 7 SPRING SILVER PLATED 2.0 TO 5.0µm (only contact area)  
Kontaktfeder galv. versilbert 2.0 bis 5.0µm (nur Kontaktzone)
  - 8 BODY PRE TIN Sn 1.0 TO 3.0µm  
Kontaktkoerper vorverzinnt Sn 1.0 bis 3.0µm
  - 9 REINFORCED WIRE ACCORDING TO LV 112-4  
Zugverstaerkte Leitung nach LV 112-4

VERSION / Ausführung	REV.	RANGE Bereich	INSULATION-Ø Isolations-Ø (mm)	AWG	mm <sup>2</sup>	BODY Kontakt-körper	SPRING Kontakt-feder	BODY Kontakt-körper	SPRING Kontakt-feder	DESIGN WIRE-CRIMP Ausführung Draht-Crimp	C7											SINGLE WIRE SEAL FOR CAVITY DIAMETER	BLINDPLUG ORDER NO. Blindstopfen Bestell-Nr.	APPLICATION TOOLS Verarbeitungswerkzeuge	
											A	B	D <sub>Dr</sub>	C	E	D <sub>ISO</sub>	F	G	H	J	K				
STANDARD APPLICATION Standardanwendung	0-1452665-3	B	0.25-	1.1-	-	0.25	CuSn0.15/0.2	CuNiSi	5	7	2	1.8	1.8	0.8	4.2	4.3	2.6	2.6	2.0	6.4	0.8	16	SEE APPLICATION SPEC. 114-18464 siehe Verarbeitungsspez. 114-18464		
	0-1452665-2	B	0.25-	1.1-	24	-				6	2	1.8	1.8	0.8	4.2	4.3	2.6	2.6	2.0	6.4	0.8	16			
	0-1452665-1	B	0.35	1.75	22	-				5	2	1.8	1.8	0.8	4.2	4.3	2.6	2.6	2.0	6.4	0.8	16			
	0-1452668-3	C	0.5-	1.4-	20	0.5				7	2	2.0	2.1	1.1	4.2	4.3	2.7	2.6	2.0	6.4	0.8	16			
	0-1452668-2	C	0.5-	1.4-	-	0.75				6	2	2.0	2.1	1.1	4.2	4.3	2.7	2.6	2.0	6.4	0.8	16			
	0-1452668-1	C	0.75	1.9	-	0.75				5	2	2.0	2.1	1.1	4.2	4.3	2.7	2.6	2.0	6.4	0.8	16			
	0-1452671-3	B	1-	1.9-	18	-				7	3	2.6	2.9	1.35	4.4	4.3	2.9	3.0	2.0	6.8	0.8	16.55			
	0-1452671-2	B	1-	1.9-	-	1				6	3	2.6	2.9	1.35	4.4	4.3	2.9	3.0	2.0	6.8	0.8	16.55			
	0-1452671-1	B	1.5	2.4	16	-				5	3	2.6	2.9	1.35	4.4	4.3	2.9	3.0	2.0	6.8	0.8	16.55			
	0-1452671-1	B	1.5	2.4	-	1.5				5	3	2.6	2.9	1.35	4.4	4.3	2.9	3.0	2.0	6.8	0.8	16.55			

**0- VARIANTS SUPERSEDED BY 7- VARIANTS (SEE TABLE ON TOP)**

THIS DRAWING IS A CONTROLLED DOCUMENT.

OWNER: E. Horn 11NOV2011  
 CHK: R. Meier 11NOV2011  
 APVD: V. Seigel 11NOV2011

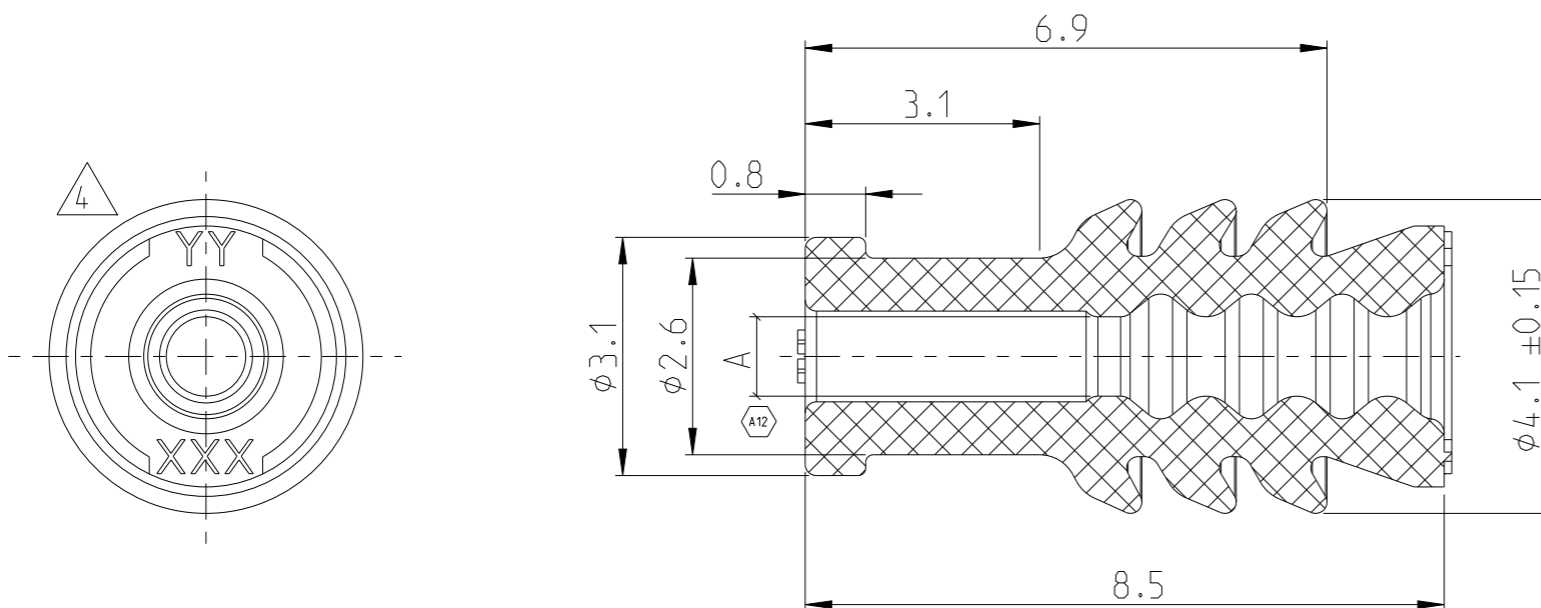
**STE** TE Connectivity

NAME: MCON 1.2 LL (LOCKING-LANCE)

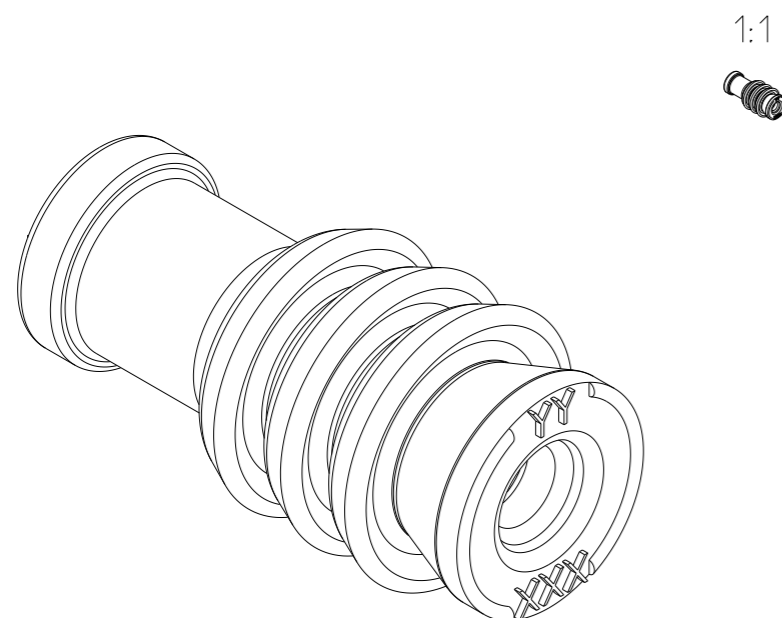
SIZE: A1 CAGE CODE: 00779 DRAWING NO: 1452674 RESTRICTED TO: -

SCALE: - SHEET: 2 OF 2 REV: C7

P	LTR	DESCRIPTION	DATE	DWN	APVD
A9		NEW DASH # 1-967067-1, TEMPERED	09JAN2012	MAH.	ABE.
A10		NEW PRO-E DRAWING	02FEB2012	MAH.	ABE.
A11		NEW CREO DRAWING	27APR2023	BV	GB
A12		DRAWING CORRECTION	09DEC2024	BV	GB



- 1 Suitable for Socket Contact for Single Wire Seal. SEE: 929454, 929419, 1241611
- 2 Suitable for Pin Contact for Single Wire Seal. SEE: 929453
- 3 Siloxane is minimized through Tempering Process.
- 4 XXX YY : Cavity markings.



Same as 967067-2	Same as 967067-2	5-967067-2	A	Same as 967067-2	Same as 967067-2	VMQ 50	-
Same as 967067-1	Same as 967067-1	5-967067-1	A	Same as 967067-1	Same as 967067-1		-
φ1.4 - 2.1	φ1.0±0.15	1-967067-1	A	Green	-	967067-1	3
φ0.9 - 1.4	φ0.6±0.15	967067-2	A	Yellow	0.07	VMQ 50	-
φ1.4 - 2.1	φ1.0±0.15	967067-1	A	Green	0.06		-
ISO-DIA	DIM "A"	ORDER No.	REV	COLOUR	WEIGHT	MATERIAL	HEAT TREAT

THIS DRAWING IS A CONTROLLED DOCUMENT.

DWN S. GARCIA 29JUL1999

CHK R. JETTER 28JUL1999

APVD -

NAME Micro Quadlock System  
SINGLE WIRE SEAL for cavity DIA 3.45mm



DIMENSIONS:	TOLERANCES UNLESS OTHERWISE SPECIFIED:
mm	M3 DIN7715
	0 PLC ±-
	1 PLC ±-
	2 PLC ±-
	3 PLC ±-
	4 PLC ±-
	ANGLES ±-
MATERIAL	FINISH
SEE TABLE	-
	-

PRODUCT SPEC

114-18025

APPLICATION SPEC

108-18403

WEIGHT

TABLE

CUSTOMER DRAWING

SIZE A3 CAGE CODE 00779 DRAWING NO. C=967067 RESTRICTED TO -

SCALE 10:1 SHEET 1 OF 1 REV A12