

M 22900-K



MINIKIT

Proseguire nella pagina successiva per visualizzare la scheda tecnica dei componenti

| Revisione | Prodotto |
|----------------------|----------|
| REV.00 08/04/2026 | OEM |

| REV | DATE | DESCRIPTION | BY | CHK | APPV |
|-----|-----------|---------------------------|----|-----|------|
| D1 | 22MAY2024 | REVISED PER PCN-24-210159 | PS | CB | |
| D2 | 18NOV2024 | REVISED PER PCN-24-226098 | PS | CB | |
| D4 | 08SEP2025 | REVISED PER PCN-25-254987 | AP | AJ | |
| D5 | 06NOV2025 | REVISED PER PCN-25-257854 | RT | EC | |

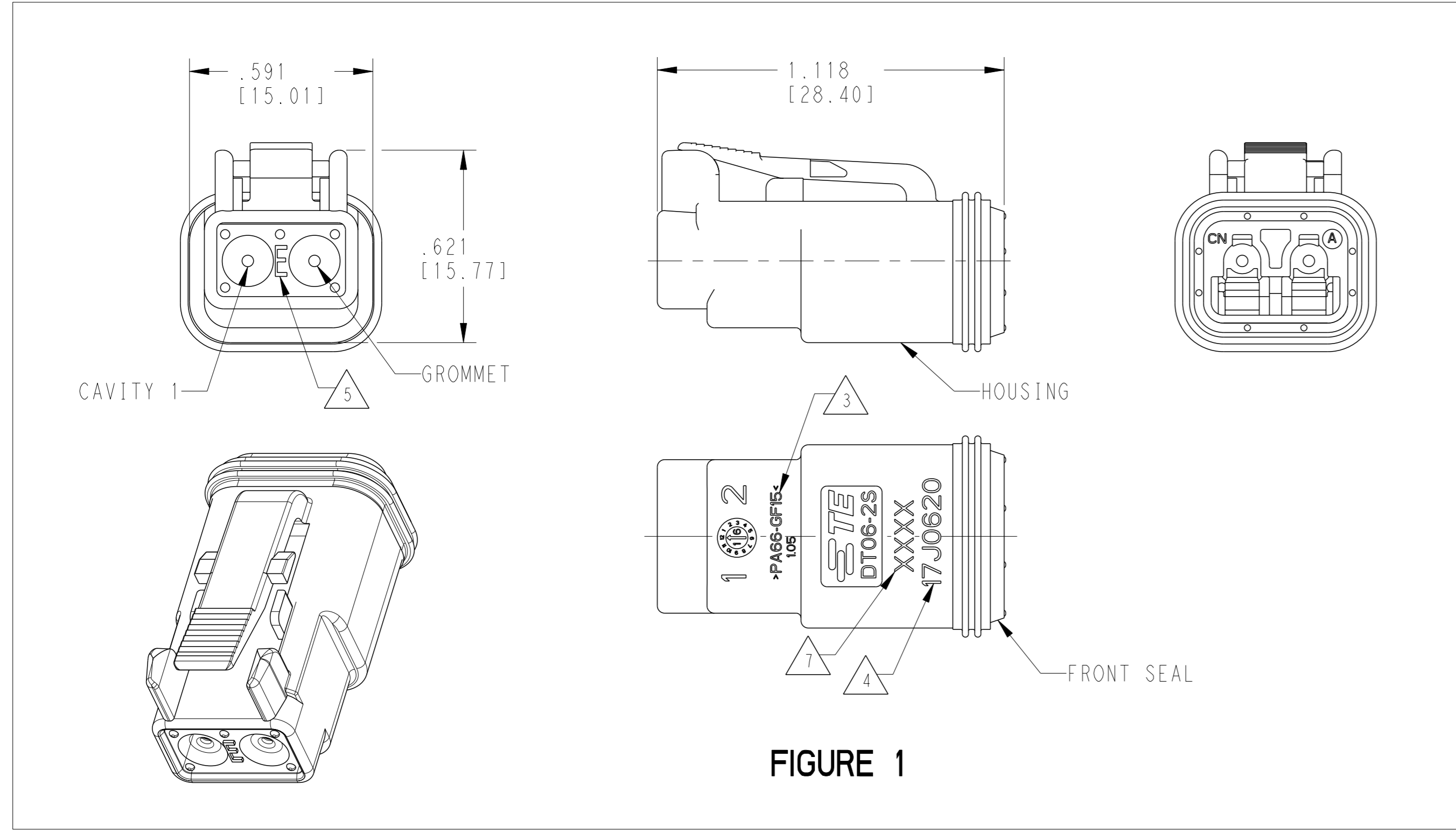


FIGURE 1

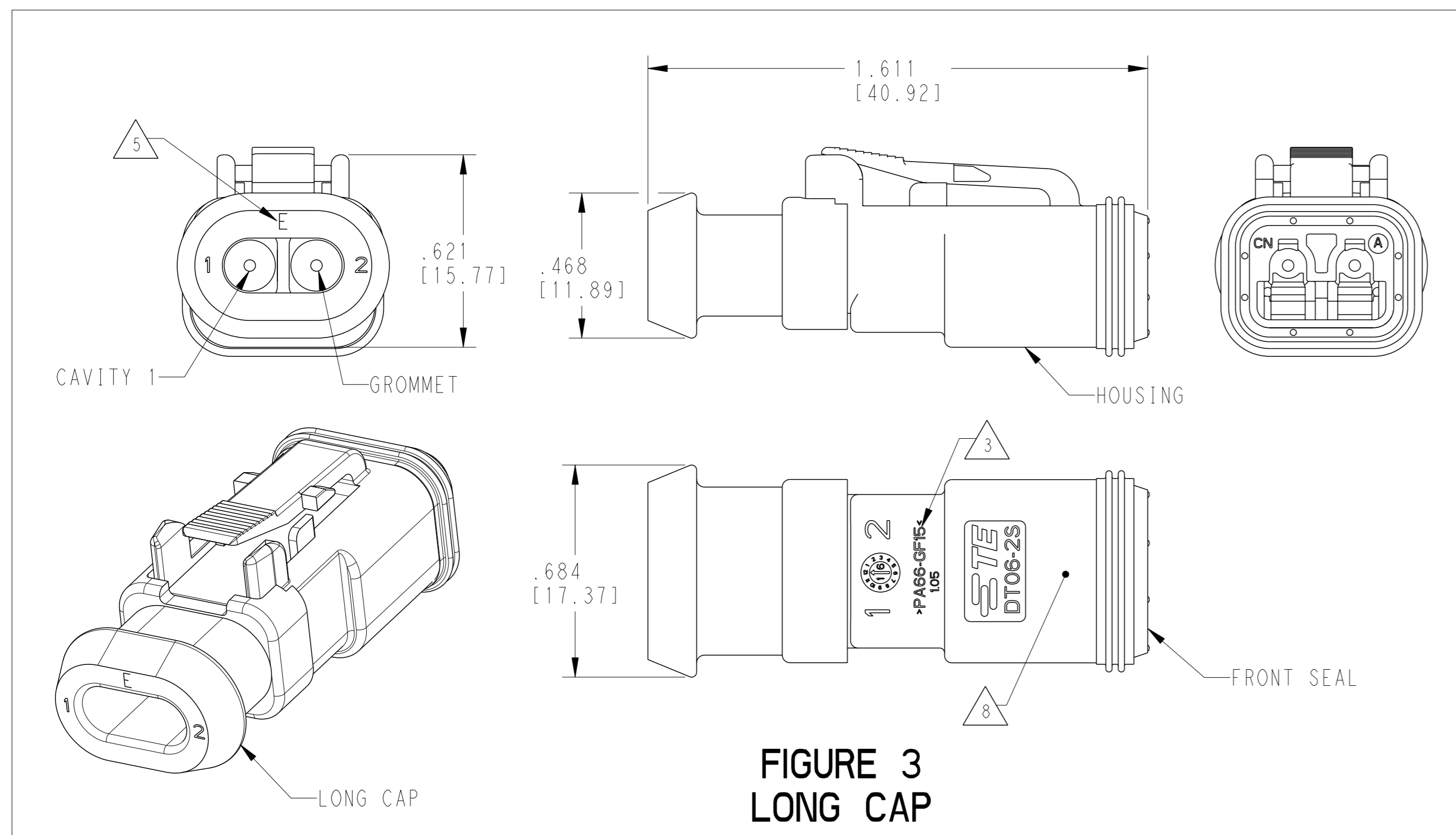


FIGURE 3 LONG CAP

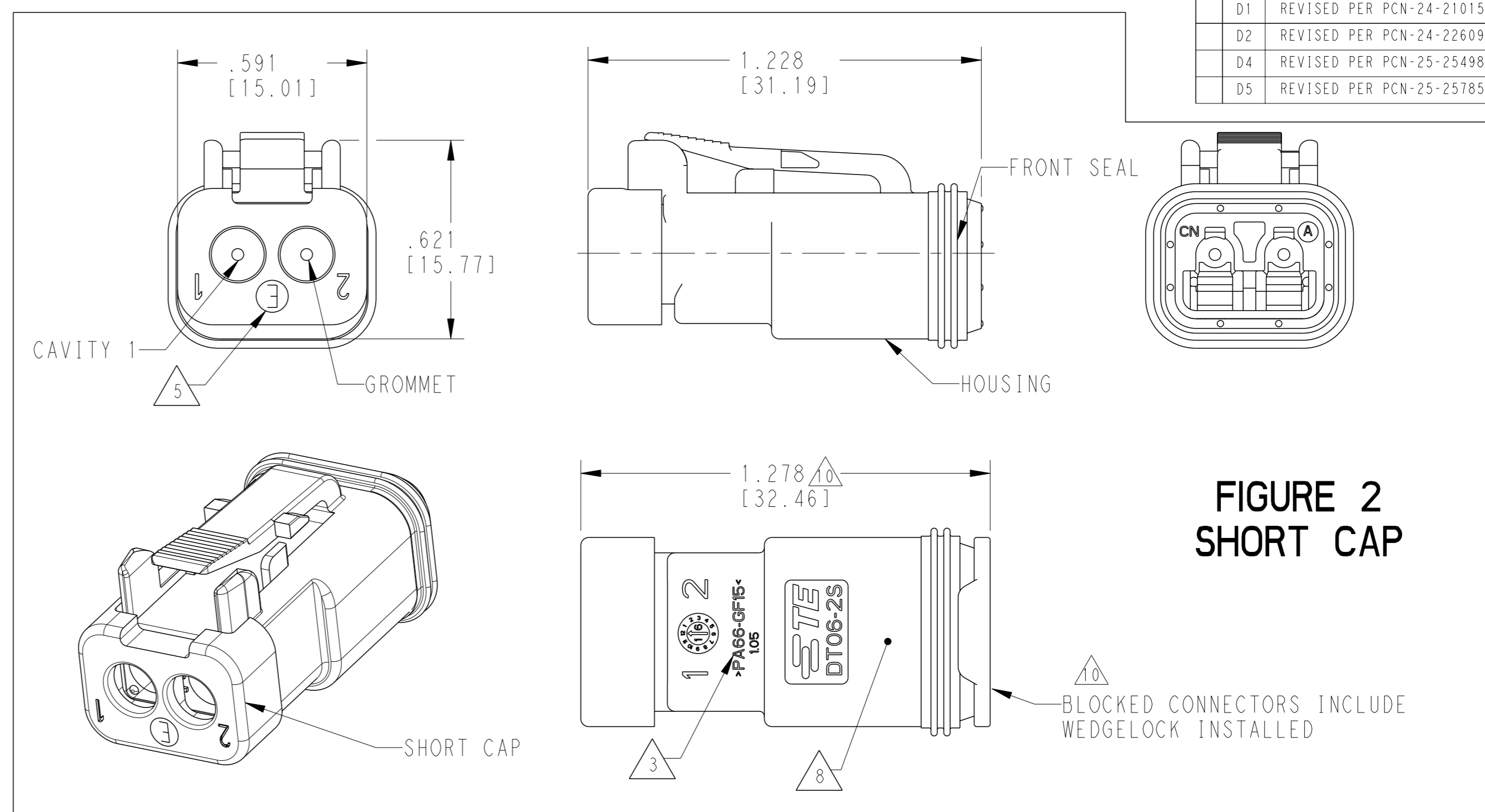


FIGURE 2 SHORT CAP

| CONTACT SIZE | WIRE RANGE | INSULATION OD SEALING RANGE | SEAL IDENTIFICATION |
|--------------|-------------------------------------|-----------------------------|------------------------|
| 16 | 14-20 AWG [2.5-0.5mm ²] | .088-.145 [2.23-3.68] | STANDARD SEAL |
| | | .053-.120 [1.35-3.05] | EXTRA THIN SEAL E-SEAL |

| TE INTERNAL PART NUMBER | DEUTSCH PART NUMBER | PN REV | HOUSING COLOR | STANDARD SEAL GROMMET | EXTRA THIN SEAL E-SEAL GROMMET | BLOCKED SEAL ¹⁰ | SHORT CAP | LONG CAP | FIGURE |
|-------------------------|---------------------|--------|---------------|-----------------------|--------------------------------|----------------------------|-----------|----------|--------|
| DT06-2S | DT06-2S | A | GREY | X | | | | | 1 |
| DT06-2S-C015 | DT06-2S-C015 | F | GREY | | X | | | | 1 |
| DT06-2S-C017 | DT06-2S-C017 | B | GREY | | | X | X | | 2 |
| DT06-2S-CE01 | DT06-2S-CE01 | E | GREY | | X | | X | | 2 |
| DT06-2S-CE03 | DT06-2S-CE03 | B | BLACK | | X | | X | | 2 |
| DT06-2S-CE04 | DT06-2S-CE04 | C | GREY | | X | | | X | 3 |
| DT06-2S-CE05 | DT06-2S-CE05 | B | BLACK | | X | | X | | 2 |
| DT06-2S-CE06 | DT06-2S-CE06 | B | BLACK | | X | | | | 1 |
| DT06-2S-CE13 | DT06-2S-CE13 | B | BLACK | | X | | | X | 3 |
| DT06-2S-E003 | DT06-2S-E003 | B | GREY | X | | | X | | 2 |
| DT06-2S-E004 | DT06-2S-E004 | A | BLACK | X | | | | | 1 |
| DT06-2S-E005 | DT06-2S-E005 | A | BLACK | X | | | X | | 2 |
| DT06-2S-E008 | DT06-2S-E008 | B | GREY | X | | | | X | 3 |
| DT06-2S-EP04 | DT06-2S-EP04 | C | GREY | X | | | X | | 2 |
| DT06-2S-EP06 | DT06-2S-EP06 | B | BLACK | X | | | X | | 2 |
| DT06-2S-EP11 | DT06-2S-EP11 | A | BLACK | X | | | | X | 3 |
| DT06-2S-FP02 | DT06-2S-FP02 | B | BLACK | X | | | X | | 2 |
| DT06-2S-P004 | DT06-2S-P004 | A | GREY | X | | | | | 1 |
| DT06-2S-P012 | DT06-2S-P012 | A | BLACK | X | | | | | 1 |
| 1-2448100-1 | DT06-2S-TE09 | A | BROWN | | X | | | | 1 |
| 1-2448100-2 | DT06-2S-TE03 | A | GREEN | | X | | | | 1 |
| 1-2448100-3 | DT06-2S-TE07 | A | BLUE | | X | | | | 1 |
| 2-2448100-1 | DT06-2S-TN09 | A | BROWN | X | | | | | 1 |
| 2-2448100-2 | DT06-2S-TN03 | A | GREEN | X | | | | | 1 |
| 2-2448100-3 | DT06-2S-TN07 | A | BLUE | X | | | | | 1 |
| 3-2448100-1 | DT06-2S-EE18 | A | BROWN | | X | | X | | 2 |
| 3-2448100-2 | DT06-2S-EE16 | A | GREEN | | X | | X | | 2 |
| 3-2448100-3 | DT06-2S-EE17 | A | BLUE | | X | | X | | 2 |
| 4-2448100-1 | DT06-2S-EE14 | A | BROWN | X | | | X | | 2 |
| 4-2448100-2 | DT06-2S-EE13 | A | GREEN | X | | | X | | 2 |
| 4-2448100-3 | DT06-2S-EE06 | A | BLUE | X | | | X | | 2 |

³ MATERIAL:
 HOUSING: PA66 GF15, SEE TABLE FOR COLOR
 SHORT, LONG CAP: PA66 GF15, BLACK
 GROMMET: E-SEAL VMO (BURNT RED)
 N-SEAL VMO (RED-ORANGE)
 FRONT SEAL: VMO (RED-ORANGE)
 FLUROSILICONE FRONT SEAL (BLUE)
 AVAILABLE THROUGH DT06-2S-FP02

2. THIS PLUG MATES WITH DT04-2P-XXXX RECEPTACLE.
 (XXXX = ALL MODIFICATIONS)

1. SECONDARY WEDGE LOCK SOLD SEPARATELY: W2SX-XXXX.
 (X = A,B,C,D KEY, XXXX = ALL MODIFICATIONS)
 W2S OR W2S-P012 MAY BE USED WITH THESE PLUGS,
 W2S-P012 IS RECOMMENDED.
 NOTES: UNLESS OTHERWISE SPECIFIED

⁷ XXXX IDENTIFIES THE MODIFICATION NUMBER,
 IF APPLICABLE. EXAMPLE: "E003" FOR DT06-2S-E003,
 OR BLANK FOR DT06-2S.

6. FOR CONTACTS AND WIRE PERFORMANCE AND APPLICATION
 CHARACTERISTICS SEE CUSTOMER DRAWING 0425-015-0000.

⁵ "E" IDENTIFIES E-SEAL.

⁴ DATE CODE: IDENTIFIES THE YEAR, MONTH, DAY AND HOUR OF ASSEMBLY.
 YEAR: FIRST AND SECOND DIGITS. (17 = 2017)
 MONTH: THIRD DIGIT, EXCLUDING I. A = JAN, B = FEB,
 C = MARCH ... (K = OCTOBER)
 DAY: FOURTH AND FIFTH DIGITS (14 = 14th DAY)
 HOUR: SIXTH AND SEVENTH DIGITS (11 = 11AM)

11. FOR ALL ID MARKINGS SURROUNDING THE PART, ORIENTATION IS SHOWN FOR REFERENCE ONLY AND DOES NOT AFFECT FUNCTIONALITY PROVIDED THE MARKINGS ARE IN THE CORRECT POSITION. SIZE AND LOCATION ARE APPROXIMATE, AS SHOWN.

¹⁰ CONNECTORS WITH A BLOCKED SEAL INCLUDE THE W2S-P012 WEDGE INSTALLED AS PART OF THE PLUG ASSEMBLY.

⁹ ALTERNATE CONSTRUCTION EXCLUSIVELY FOR PARTS PRODUCED IN CHINA.

⁸ ADDITIONAL MARKING PER NOTE 4 AND 7 EXCLUSIVELY FOR PARTS WITH CAPS PRODUCED IN CHINA.

THIS DRAWING IS A CONTROLLED DOCUMENT. DWN: JAIME C. APOSTOL 24OCT2016
 CHK: D. MEYER 24OCT2016
 APPV: D. MEYER 24OCT2016

TE Connectivity

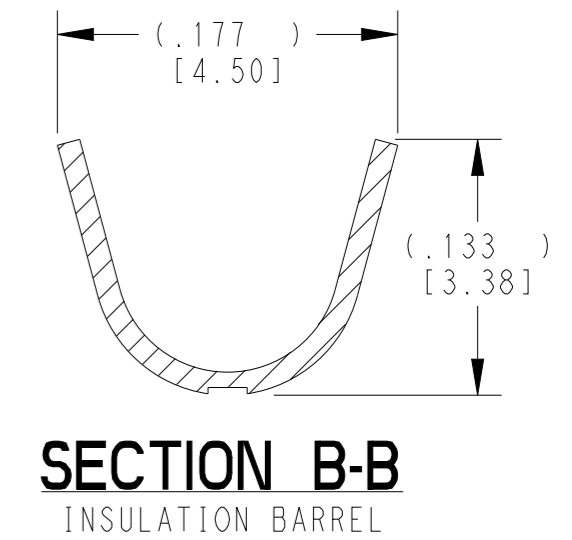
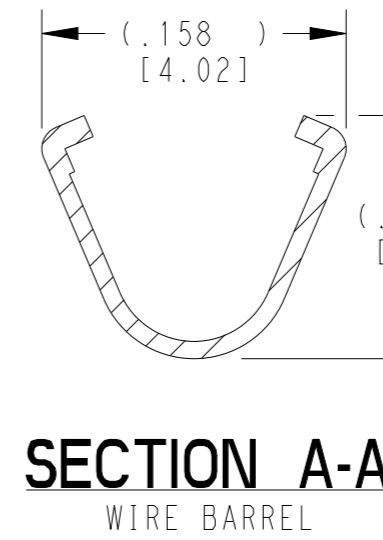
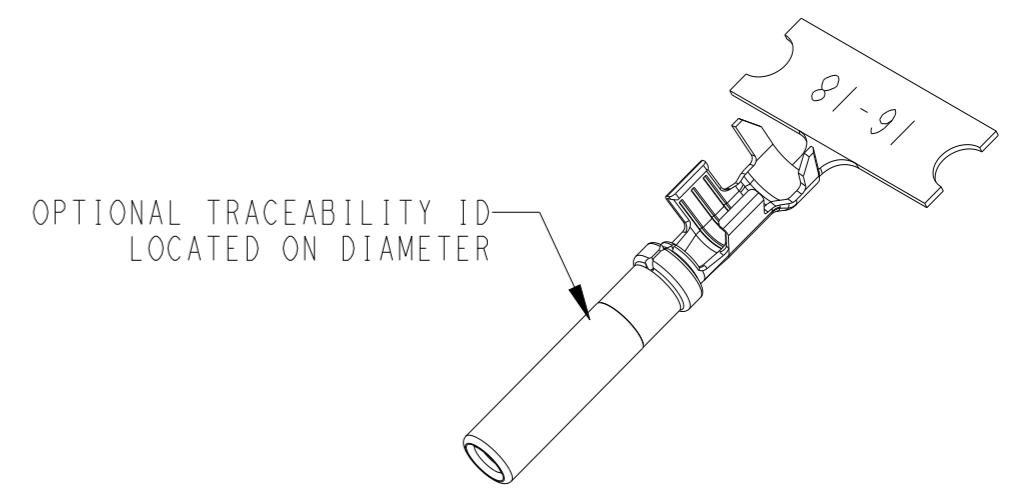
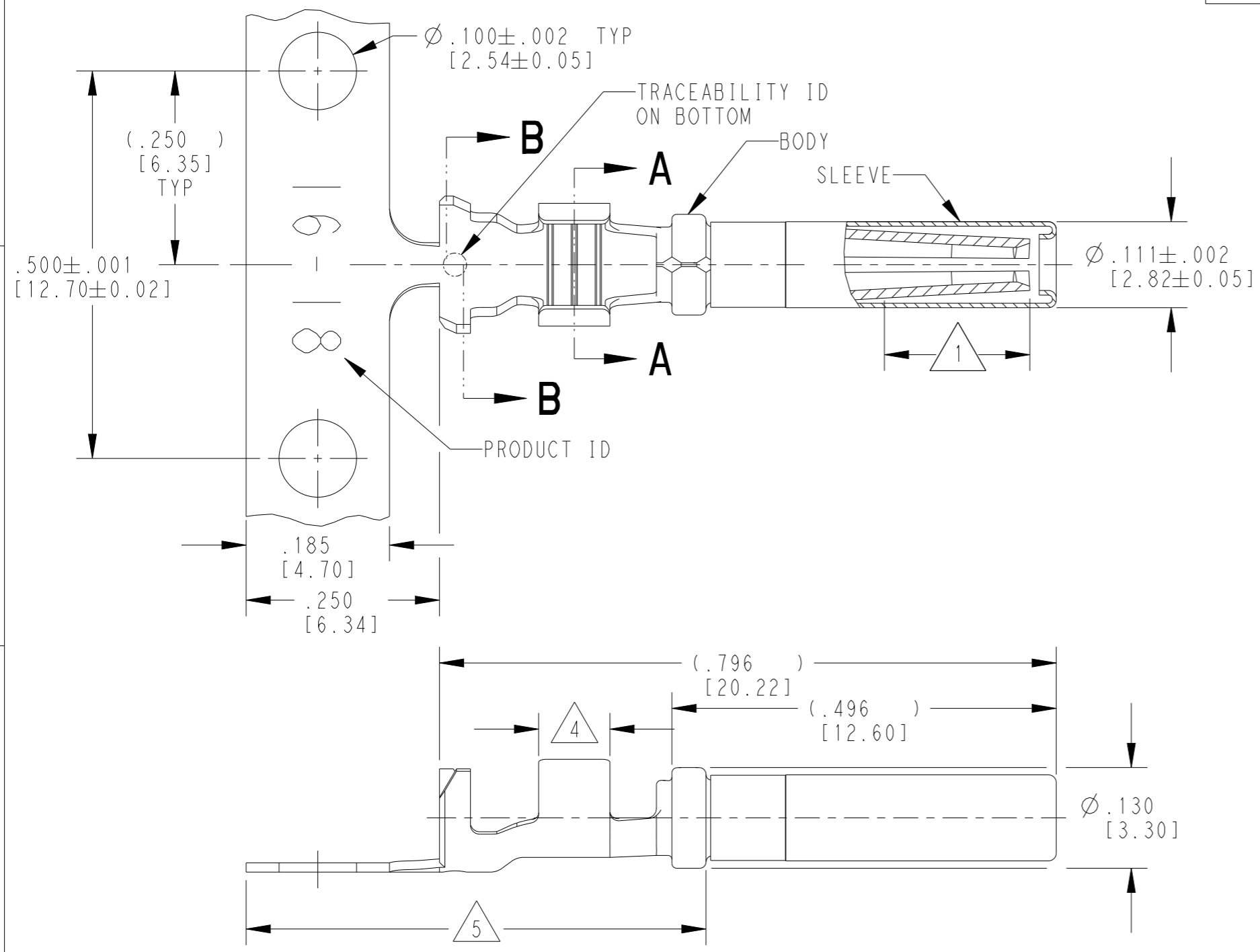
2 WAY PLUG, STANDARD SEAL
 EXTRA THIN SEAL, SHORT CAP AND
 LONG CAP, DT SERIES

SIZE: 108-151009
 APPLICATION SPEC: 114-151009
 WEIGHT: 114-151009

CUSTOMER DRAWING
 SCALE: 3:1
 SHEET: 1 OF 1
 REV: D5

THIS DRAWING IS UNPUBLISHED. RELEASED FOR PUBLICATION 2015
 © COPYRIGHT 1999 BY TE CONNECTIVITY ALL RIGHTS RESERVED.

| LOC | DIST | REVISIONS | | | |
|-----|------|-----------------------------|-----------|-----|------|
| P | LTR | DESCRIPTION | DATE | DWN | APVD |
| | K | REVISED PER PCN E-20-008101 | 12JUN2020 | DM | DM |
| | K1 | REVISED PER PCN-22-157823 | 12OCT2022 | SP | DM |
| | K2 | REVISED PER PCN-25-234736 | 06FEB2025 | GB | DM |
| | L | REVISED PER PCN-25-253652 | 14AUG2025 | RT | DM |



5 TIN PLATING MAY BE IN THIS REGION.

4 TIN PLATED REGION.

3 MATERIAL:
 BODY: .012 [0.30] THICK COPPER ALLOY
 SLEEVE: STAINLESS STEEL

2. WIRE RANGE: 18 AWG TO 14 AWG [0.75-2.0 mm²]
 INSULATION RANGE: $\varnothing .075$ -.140 [$\varnothing 1.91$ -3.56]

1 GOLD PLATED REGION.

NOTES: UNLESS OTHERWISE SPECIFIED

| TE INTERNAL PN | DEUTSCH PN | REV | PLATING |
|----------------|--------------|-----|---|
| 1062-16-0122 | 1062-16-0122 | L | Ni/Cu overall, Sn/Ni/Cu Wire Barrel |
| 1062-16-0144 | 1062-16-0144 | M | Selective Au, Ni overall, Sn/Ni Wire Barrel |
| 1062-16-0177 | 1062-16-0177 | L | Sn/Ni/Cu overall |

THIS DRAWING IS A CONTROLLED DOCUMENT.

DWN M. BLUM 03NOV1999
 CHK A. ROLINSKI 08DEC2000
 APVD R. REED 08DEC2000

TE Connectivity

NAME: SOCKET, STAMPED CONTACT
 SIZE 16
 14-18 AWG, .075-.140 INS

PRODUCT SPEC: 108-151000
 APPLICATION SPEC: 114-151000

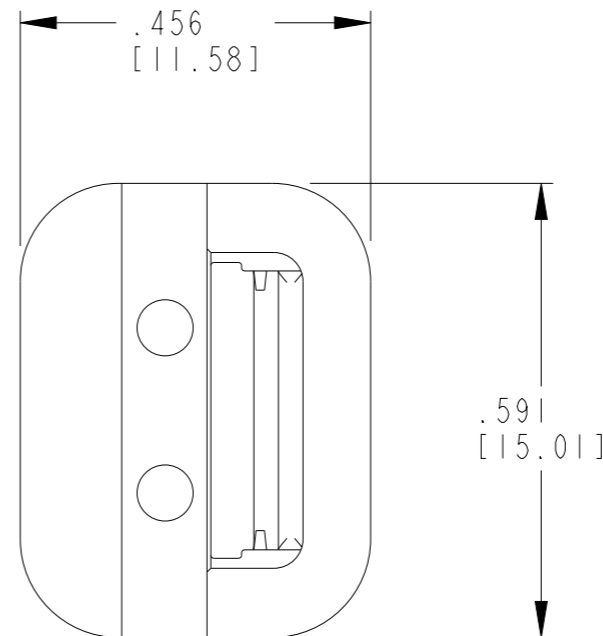
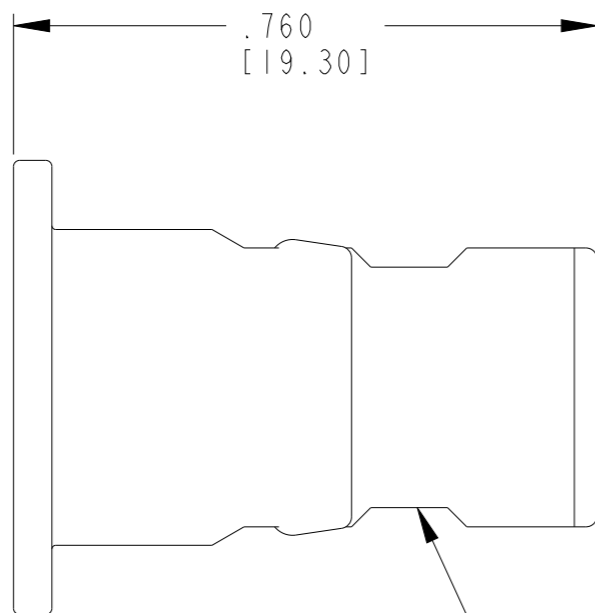
WEIGHT: 0.43 g

SIZE: A3 CAGE CODE: 4AFU8 DRAWING NO: 1062-16-01XX RESTRICTED TO: -

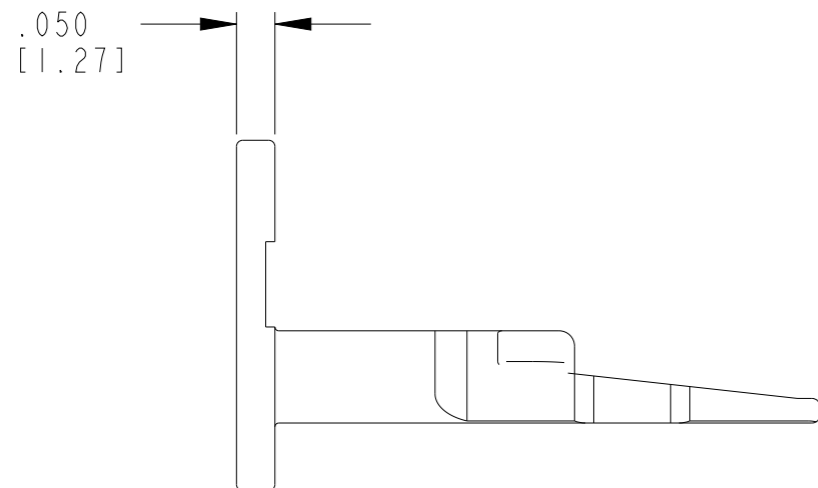
Customer Drawing SCALE: 6:1 SHEET 1 OF 1 REV L

REVISIONS

| P | LTR | DESCRIPTION | DATE | DWN | APVD |
|---|-----|---------------------------|-----------|-----|------|
| | E | REVISED PER PCN-23-190134 | 29SEP2023 | GB | CB |
| | | | | | |
| | | | | | |



CUTOUT FEATURE OPTIONAL 2PL



| | | | | | | | | |
|--|--|--------------------------------|-----------|--|--------------------|---------------------|--------------------|----------|
| THIS DRAWING IS A CONTROLLED DOCUMENT. | | DWN DE KAY | 04OCT1989 | | | | | |
| DIMENSIONS: INCHES [mm] | | CHK - | - | | | | | |
| TOLERANCES UNLESS OTHERWISE SPECIFIED: | | APVD - | - | NAME WEDGE LOCK FOR 2 CONTACT PLUG DT SERIES | | | | |
| | | PRODUCT SPEC 108-151009 | - | | | | | |
| MATERIAL PBT GF30 ORANGE | | APPLICATION SPEC 114-151009 | - | SIZE A3 | CAGE CODE 00779 | DRAWING NO G=W2S | RESTRICTED TO - | |
| FINISH - | | WEIGHT - | - | CUSTOMER DRAWING; RESTRICTED CUSTOMER | | SCALE 3:1 | SHEET 1 OF 1 | REV E |

1. W2S WEDGE USED WITH DT06-2S-XXXX PLUG.
(XXXX = ALL MODIFICATIONS)