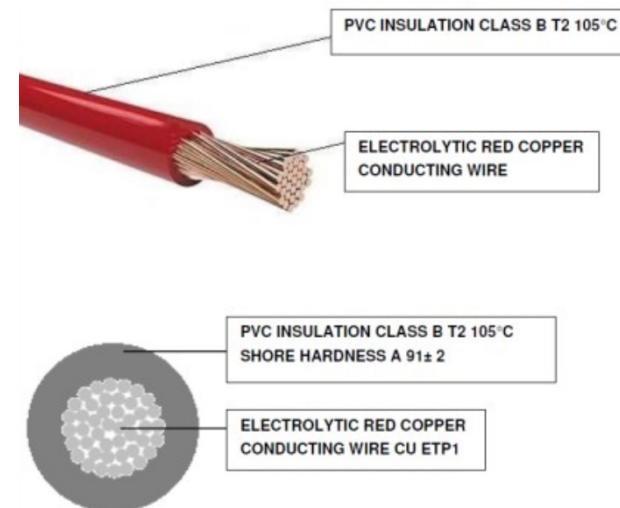


M 22911-C



Caratteristiche CAVO	
Temperatura d'uso	-40 °C / +105 °C (IDLE STATE)
Sezione	0.50 mmq
Colore	Bianco
Documenti di riferimento	ISO 19642 : 2019 / DIN 72551 ISO 6722 CLASS B / LV 112 / ISO 3795 FIAT 91107 / 18 (where applicable) ROHS II/III UN R118
Lunghezza	20 cm
Tipologia	F3T2



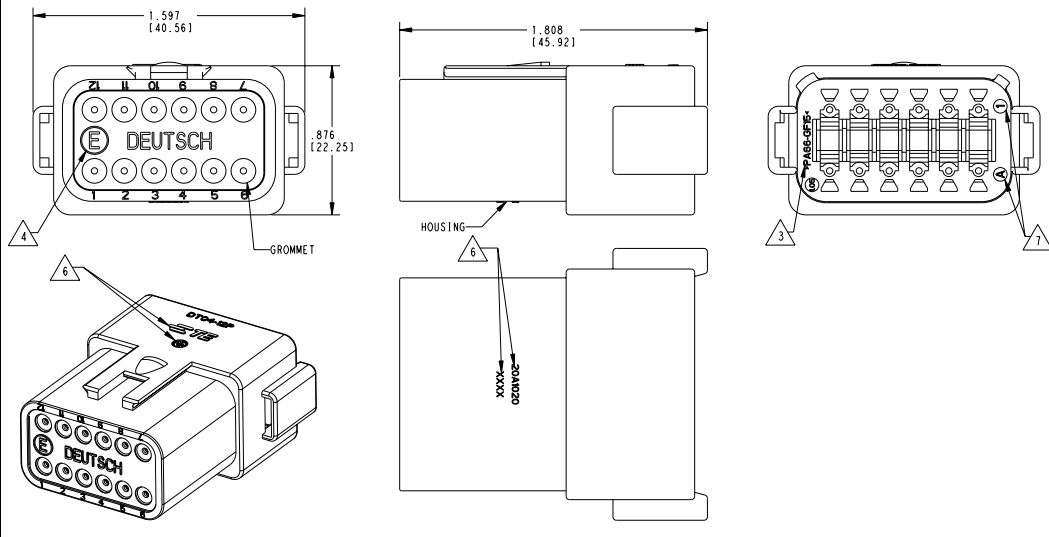
CROSS SECTION	COND. CONSTR.	EXT. DIAMETER.	INSUL. MATERIAL	EL. RES. MAX 20°	MAX VOLT.	INSULATION THICKNESS (+)
1 x 1,00	32 x 0,20 ± 0,01 mm	2,10 +0 mm -0,2 mm	PVC T2 HT 105 °C	18,5 OHM/KM	< 300 V	≥ 0,24

Proseguire nella pagina successiva per visualizzare la scheda tecnica dei componenti

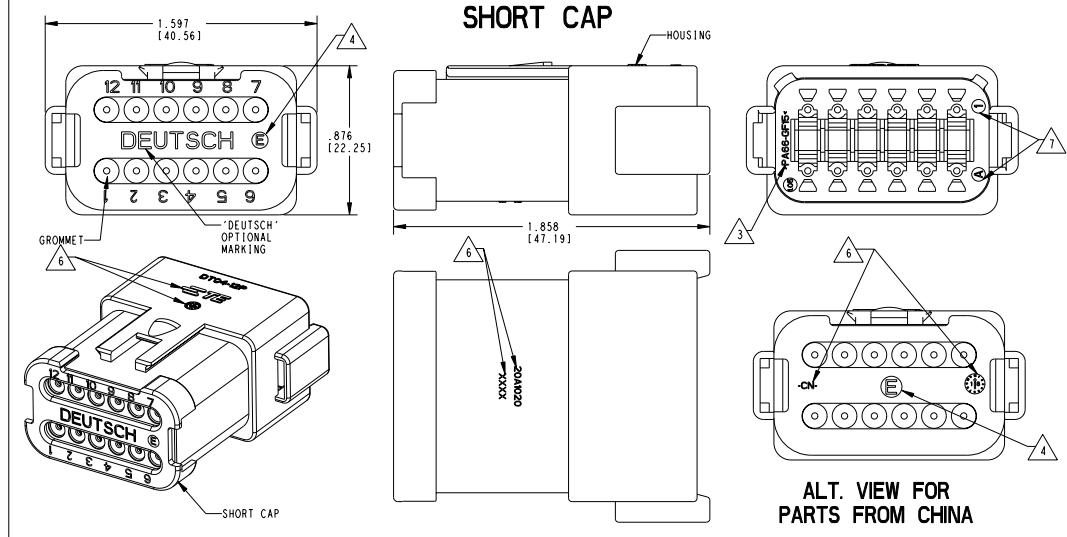
Revisione	Prodotto
REV.00 08/04/2026	OEM

REVISIONS				
REV	DESCRIPTION	DATE	BY	APP'D
A4	REVISED PER PCN-22-154549	040CT2022	AM	IG
A5	REVISED PER PCN-23-190838	040CT2023	AJ	CB
B	REVISED PER PCN-23-192205	04182024	BK	CB
B1	REVISED PER PCN-25-254987	08082025	AP	AJ

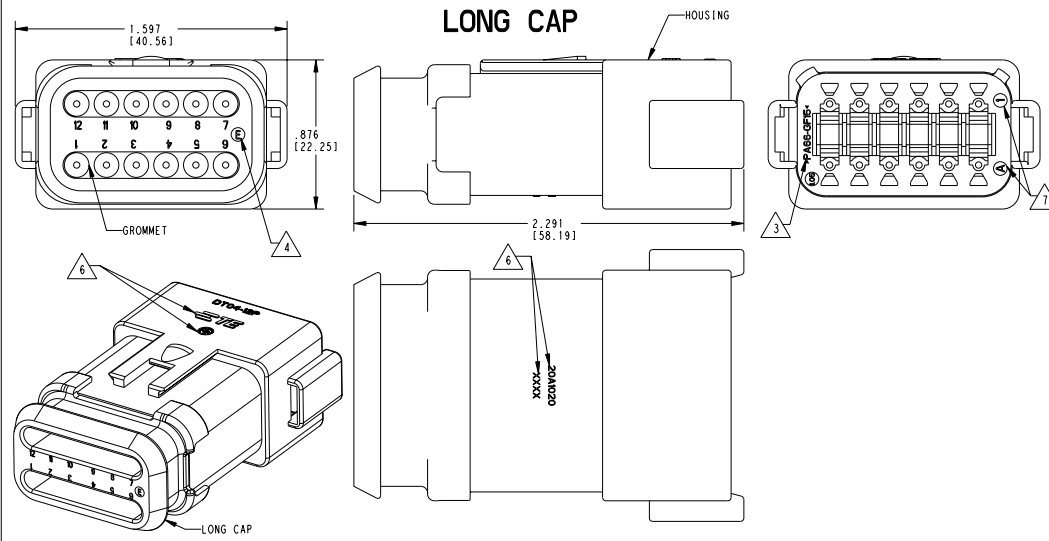
FIGURE 1



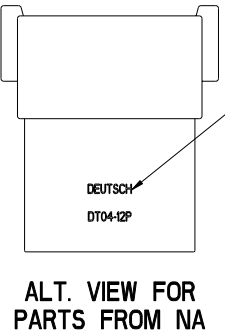
**FIGURE 2
SHORT CAP**



**FIGURE 3
LONG CAP**



CONTACT SIZE	WIRE RANGE	INSULATION OD SEALING RANGE	SEAL IDENTIFICATION
16	14-20 AWG [2.5-0.5mm ²]	.088-.145 [2.23-3.68] .053-.120 [1.35-3.05]	STANDARD SEAL EXTRA THIN SEAL E-SEAL



ALT. VIEW FOR PARTS FROM NA

TE INTERNAL PART NUMBER	DEUTSCH PART NUMBER	PN REV	HOUSING COLOR	STANDARD SEAL	EXTRA THIN SEAL	BLOCKED SEAL	ENHANCED KEY	SHORT CAP	LONG CAP	FIGURE
DT04-12PX	DT04-12PX	A	ALL	X						1
DT04-12PX-B016	DT04-12PX-B016	A	ALL	X			X			1
DT04-12PX-BE01	DT04-12PX-BE01	B	ALL	X			X	X		2
DT04-12PX-BE02	DT04-12PX-BE02	B	ALL	X			X	X		2
DT04-12PA-BE03	DT04-12PA-BE03	A	BLACK	X			X	X		2
DT04-12PA-BE04	DT04-12PA-BE04	B	BLACK		X		X	X		2
DT04-12PX-BE07	DT04-12PX-BE07	B	ALL		X		X		X	3
DT04-12PX-C015	DT04-12PX-C015	F	ALL		X					1
DT04-12PX-C017	DT04-12PX-C017	B	ALL			X		X		2
DT04-12PX-CE01	DT04-12PX-CE01	C	ALL		X			X		2
DT04-12PA-CE02	DT04-12PA-CE02	B	BLACK		X					1
DT04-12PA-CE03	DT04-12PA-CE03	B	BLACK		X			X		2
DT04-12PX-CE04	DT04-12PX-CE04	C	ALL		X				X	3
DT04-12PX-CE07	DT04-12PX-CE07	C	ALL		X		X	X		2
DT04-12PX-CE08	DT04-12PX-CE08	B	ALL		X			X		1
DT04-12PA-CE09	DT04-12PA-CE09	B	BLACK		X				X	3
DT04-12PA-CE26	DT04-12PA-CE26	A	BLACK			X		X		2
DT04-12PX-E003	DT04-12PX-E003	C	ALL	X				X		2
DT04-12PA-E004	DT04-12PA-E004	A	BLACK	X						1
DT04-12PA-E005	DT04-12PA-E005	A	BLACK	X				X		2
DT04-12PA-E008	DT04-12PA-E008	B	GRAY	X					X	3
DT04-12PX-EP04	DT04-12PX-EP04	D	ALL	X				X		2
DT04-12PA-EP20	DT04-12PA-EP20	B	GRAY	X			X		X	3
DT04-12PA-P004	DT04-12PA-P004	B	GRAY	X						1

6. MARKING FOR PARTS PRODUCED IN CHINA:
- XXXX IDENTIFIES THE MODIFICATION NUMBER. IF APPLICABLE. EXAMPLE: "E003" FOR DT04-12PA-E003, OR BLANK FOR DT04-12PA
 - DATE CODE: IDENTIFIES THE YEAR, MONTH, DAY AND HOUR OF ASSEMBLY.
YEAR: FIRST AND SECOND DIGIT. (17 = 2017)
MONTH: THIRD DIGIT, EXCLUDING 1. A = JAN, B = FEB, C = MARCH ... (K = OCTOBER)
DAY: FOURTH AND FIFTH DIGITS (14 = 14TH DAY)
HOUR: SIXTH AND SEVENTH DIGITS (11 = 11AM)
 - DIAL DATE CODE LOCATED ON HOUSING AND/OR CAP.
-CN LOCATED ON HOUSING AND/OR CAP.

9. BLOCKED SEALS ARE NOT SYMMETRICAL ON BOTH SIDES. ALTHOUGH THEY APPEAR VISUALLY DIFFERENT, EFFECTIVE SEALING IS ACHIEVED ON EITHER SIDE.
8. FOR ALL ID MARKINGS SURROUNDING THE PART, ORIENTATION IS SHOWN FOR REFERENCE ONLY AND DOES NOT AFFECT FUNCTIONALITY. PROVIDED THE MARKINGS ARE IN THE CORRECT POSITION. SIZE AND LOCATION ARE APPROXIMATE, AS SHOWN.

7. MARKING FOR PARTS PRODUCED IN US:
- DATE CODE: YEAR TO BE LAST NUMERICAL DIGIT, EX: 1 = 2021
 - MONTH USES SEQUENTIAL ALPHA CHARACTERS, EX: A = JANUARY
 - DEUTSCH

4. "E" IDENTIFIES E-SEAL. LOCATED APPROX. AS SHOWN.
3. MATERIAL: HOUSING: PA66 GF15, SEE TABLE FOR COLOR SHORT, LONG CAP: PA66 GF15, BLACK GROMMET: E-SEAL VMO (BURNT RED) N-SEAL VMO (RED-ORANGE) BLOCKED VMO (RED-ORANGE)
2. THIS RECEPTACLE MATES WITH DT06-12SX-XXXX PLUG (XXXX = ALL MODIFICATIONS)
1. SECONDARY WEDGE LOCK SOLD SEPARATELY: W12PX-XXXX. (X = A, B, C, D KEY, XXXX = ALL MODIFICATIONS)

NOTES: UNLESS OTHERWISE SPECIFIED

THIS DRAWING IS A CONTROLLED DOCUMENT. DWG NO: 22022021

APPROVED: R. MESSENGER

DATE: 22DEC2021

DESIGNED: J. GRANTCHAROVA

DATE: 22DEC2021

TE Connectivity

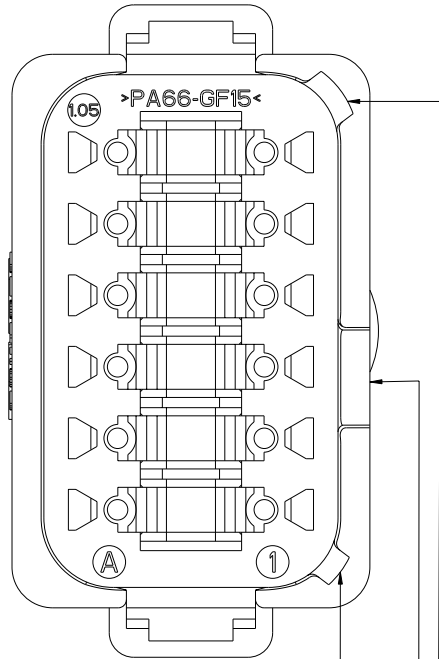
12 WAY RECEPTACLE, STANDARD SEAL EXTRA THIN SEAL, SHORT AND LONG CAP, DT SERIES

SIZE: 44F08

SCALE: 5:2

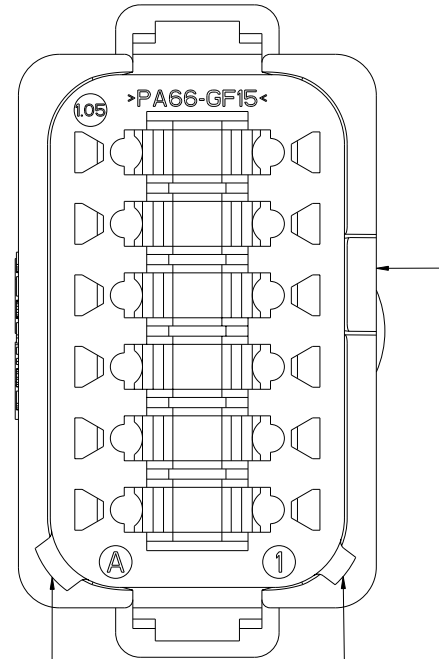
SHEET: 1 OF 3

DT04-12PA-XXXX
 KEY -A-
 HOUSING COLOR: GRAY
 SEE PN TABLE FOR BLACK PN



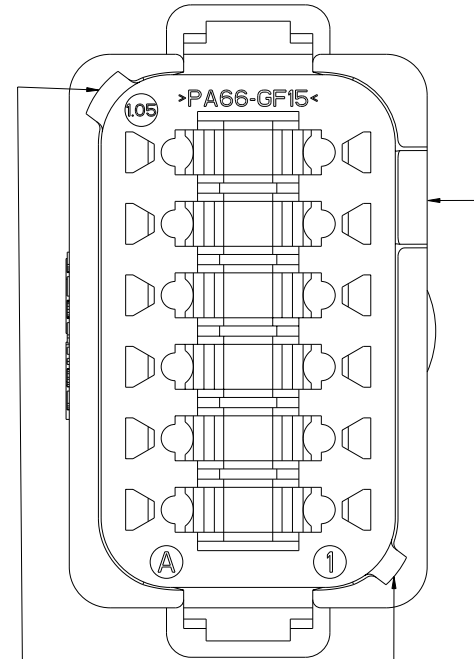
KEY -A-
 ADDITIONAL KEY -A-
 ENHANCED KEY ONLY

DT04-12PB-XXXX
 KEY -B-
 HOUSING COLOR: BLACK



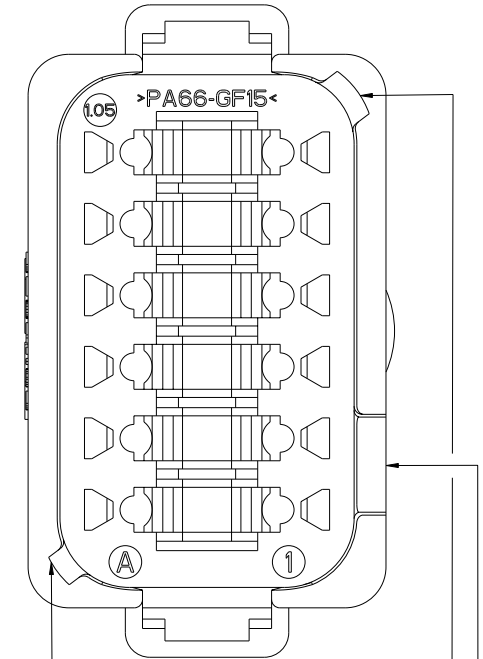
KEY -B-
 ADDITIONAL KEY -B-
 ENHANCED KEY ONLY

DT04-12PC-XXXX
 KEY -C-
 HOUSING COLOR: GREEN



KEY -C-
 ADDITIONAL KEY -C-
 ENHANCED KEY ONLY

DT04-12PD-XXXX
 KEY -D-
 HOUSING COLOR: BROWN



KEY -D-
 ADDITIONAL KEY -D-
 ENHANCED KEY ONLY

REVISIONS			
REV	DESCRIPTION	DATE	APP'D
-	SEE SHEET 1	-	-

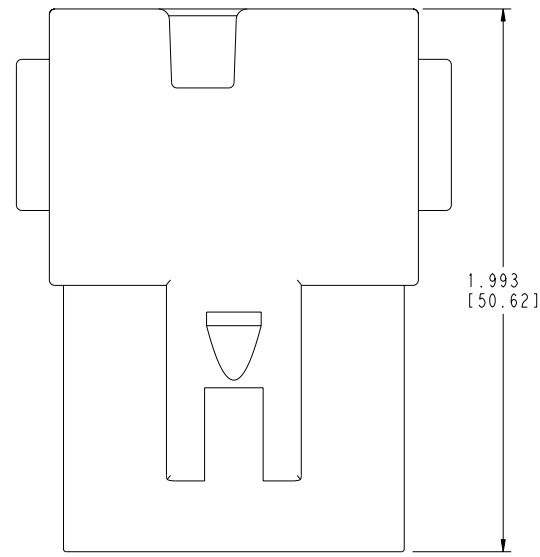
THIS DRAWING IS A CONTROLLED DOCUMENT.

DIMENSIONS: IN (mm)	TO DIMENSIONS UNLESS OTHERWISE SPECIFIED: 0 PLG A 1 PLG B 2 PLG C 3 PLG D 4 PLG E ANGLES 30°	DWG: 22DEC2021 CA: POLO CH: MESSENGER PRODUCED BY: 22DEC2021 NAME: GRANTCHAROVA 108-151009 APPLICATION SPEC 114-151009 REIGHT	TE Connectivity NAME: 12 WAY RECEPTACLE, STANDARD SEAL EXTRA THIN SEAL, SHORT AND LONG CAP, DT SERIES SIZE: 4AFU8 DRAWING NO: DT04-12PX-XXXX SHEET 2 OF 3 REV B1
------------------------	--	---	---

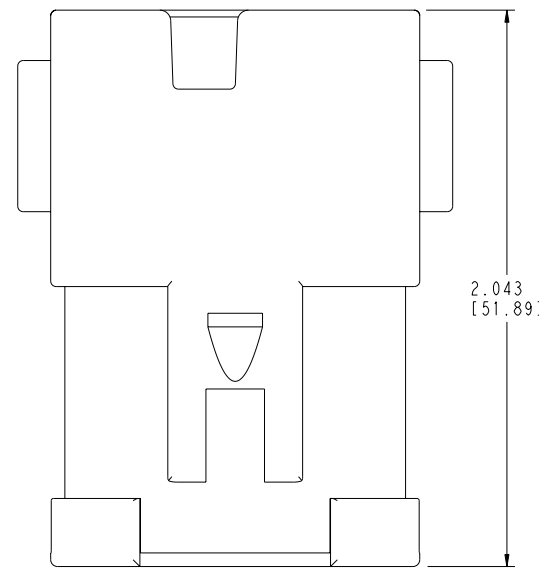
MATERIAL: 3
 FINISH: CUSTOMER DRAWING
 SCALE: 5:2

REVISIONS				
REV	DATE	BY	APPD	DESCRIPTION
-	-	-	-	SEE SHEET 1

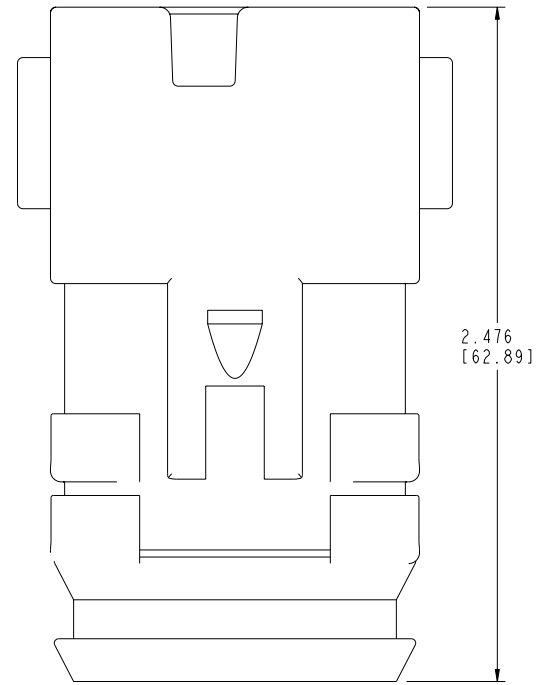
ENHANCED KEY A SHOWN FOR REFERENCE





**ENHANCED KEY
NO CAP
HOUSING COLOR: SEE TABLE**



**ENHANCED KEY
SHORT CAP
HOUSING COLOR: SEE TABLE
SHORT CAP COLOR: BLACK**

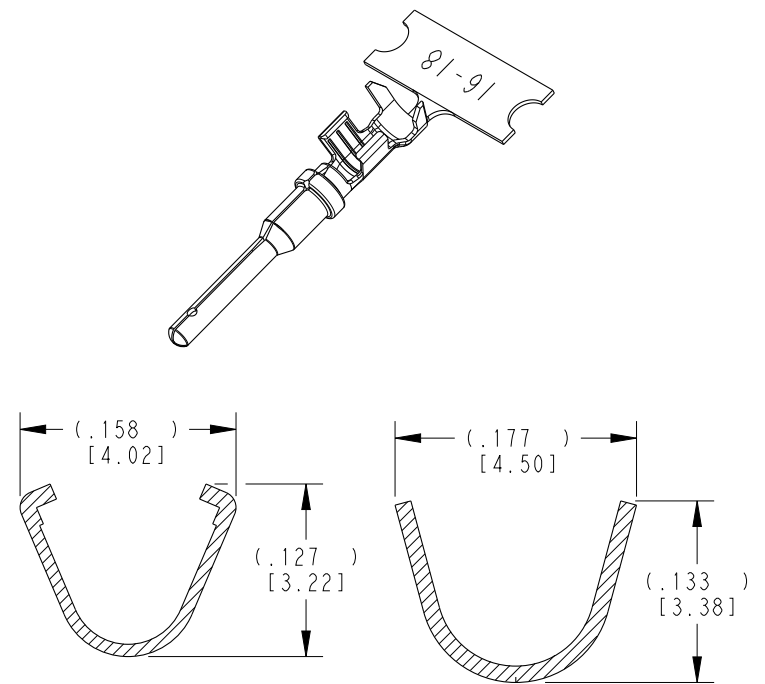
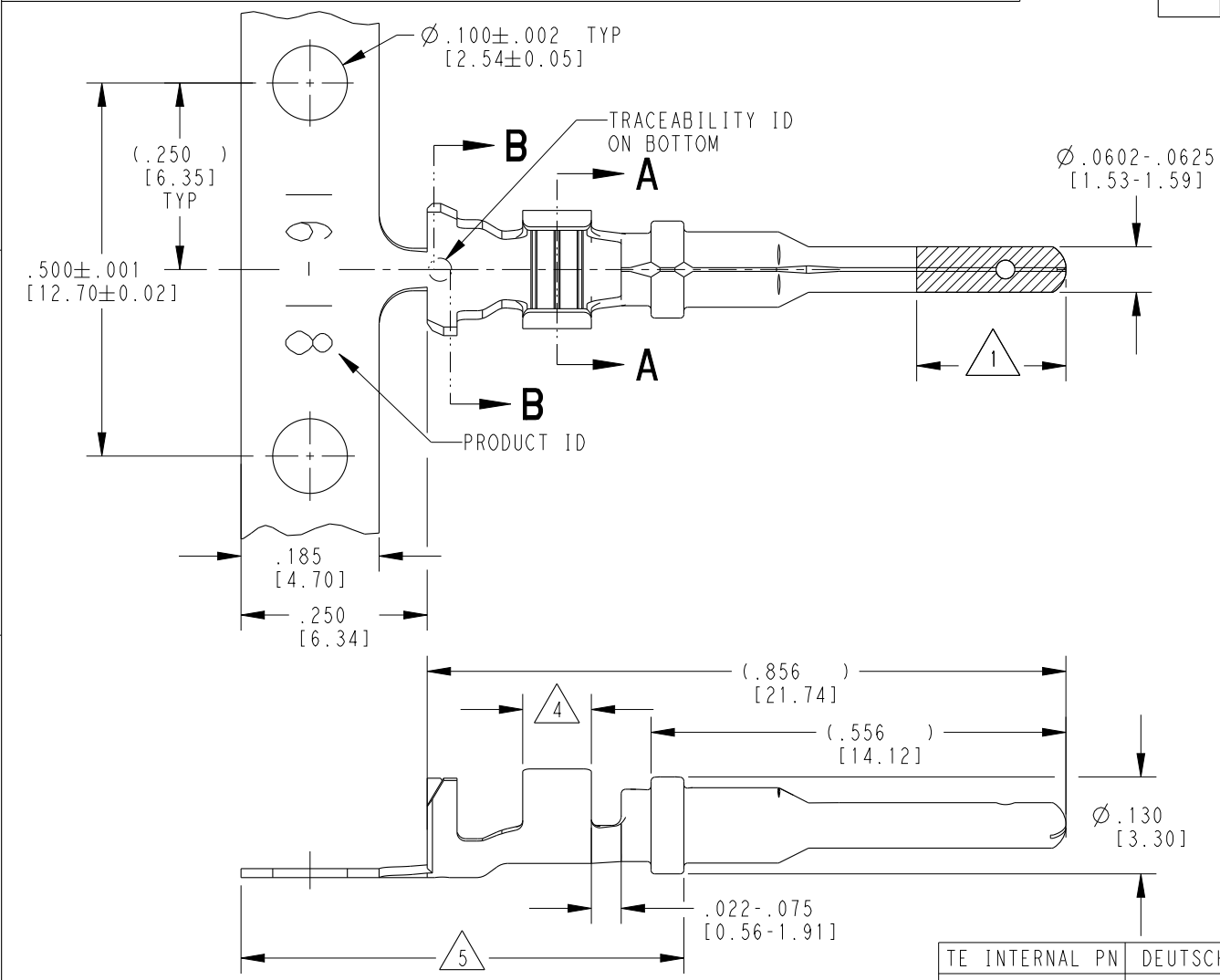


**ENHANCED KEY
LONG CAP
HOUSING COLOR: SEE TABLE
LONG CAP COLOR: BLACK**

THIS DRAWING IS A CONTROLLED DOCUMENT.		OWN: 22DEC2021	 TE Connectivity
DRAWN: CA_POLO		CHK: 22DEC2021	
DIMENSIONS: 1/16 INCHES UNLESS OTHERWISE SPECIFIED.		APPD: R_MESSENGER	NAME: 12 WAY RECEPTACLE, STANDARD SEAL EXTRA THIN SEAL, SHORT AND LONG CAP, DT SERIES
IN [mm]		PRODUCED DATE: 22DEC2021	
	0 PLC	A	SIZE: 44F08
	1 PLC	B	
	2 PLC	B	
	3 PLC	B.025 (0.64)	
MATERIAL:		FINISH: 114-151009	SCALE: 5:2
ANGLE: 30°		REIGHT: 114-151009	SHEET: 3 OF 3
CUSTOMER DRAWING		REV: DT04-12PX-XXXX	REV: B1

THIS DRAWING IS UNPUBLISHED. RELEASED FOR PUBLICATION 2020
 © COPYRIGHT 2020 BY TE CONNECTIVITY ALL RIGHTS RESERVED.

P	LTR	DESCRIPTION	DATE	DWN	APVD
K		REVISED PER PCN E-20-008101	12JUN2020	DM	DM
L		REVISED PER PCN-21-121539	08DEC2021	MK	DM
L1		REVISED PER PCN-21-121539	04FEB2022	MK	DM
L2		REVISED PER PCN-25-234384	30JAN2025	RK	CB



- 5 TIN PLATING MAY BE IN THIS REGION.
- 4 TIN PLATED REGION.
- 3 MATERIAL: .012 [0.30] THICK COPPER ALLOY
- 2. WIRE RANGE: 18 AWG TO 14 AWG [0.75-2.0 mm²]
INSULATION RANGE: Ø .075-.140 [Ø 1.91-3.56]
- 1 GOLD PLATED REGION.

NOTES: UNLESS OTHERWISE SPECIFIED

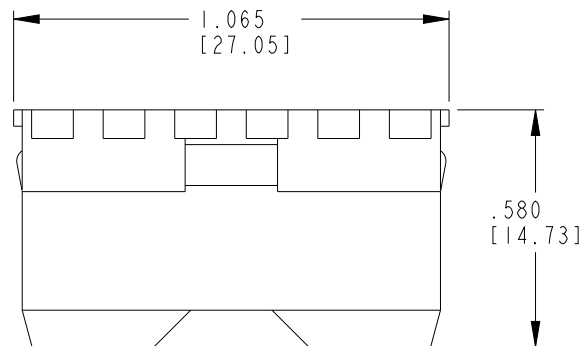
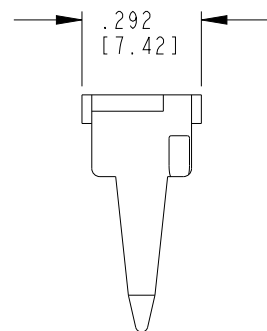
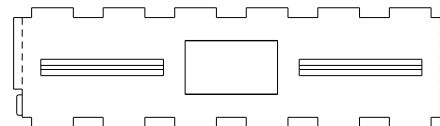
TE INTERNAL PN	DEUTSCH PN	REV	PLATING
1060-16-0122	1060-16-0122	S	Ni/Cu overall, Sn/Ni/Cu Wire Barrel
1060-16-0144	1060-16-0144	S	Selective Au, Ni/Cu overall, Sn/Ni/Cu Wire Barrel
1060-16-0177	1060-16-0177	S	Sn/Ni/Cu overall


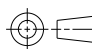
THIS DRAWING IS A CONTROLLED DOCUMENT.

DIMENSIONS: INCHES [mm]	TOLERANCES UNLESS OTHERWISE SPECIFIED: 0 PLC ± 1 PLC ± 2 PLC ± 3 PLC ±.025 [0.64] 4 PLC ± ANGLES ±	DWN M. BLUM 04NOV1999 CHK A. ROLINSKI 08DEC2000 APVD R. REED 08DEC2000	TE Connectivity NAME PIN, STAMPED CONTACT SIZE 16 14-18 AWG, .075-.140 INS	
MATERIAL 3	FINISH SEE TABLE	PRODUCT SPEC 108-151000 APPLICATION SPEC 114-151000 WEIGHT 0.33 g		

Customer Drawing SCALE 6:1 SHEET 1 OF 1 REV L2

REVISIONS					
P	LTR	DESCRIPTION	DATE	DWN	APVD
	F	REVISED PER PCN-23-190134	29SEP2023	GB	CB



THIS DRAWING IS A CONTROLLED DOCUMENT.		DWN C. WOODRUFF 04OCT1990	 TE Connectivity					
DIMENSIONS: IN [mm]		CHK B. BAYFORD 16DEC2005						
TOLERANCES UNLESS OTHERWISE SPECIFIED: 0 PLC ± 1 PLC ± 2 PLC ± 3 PLC ±.025 [0.64] 4 PLC ± ANGLES ±-		APVD -	NAME WEDGE LOCK FOR 12 WAY RECEPTACLE DT SERIES					
		PRODUCT SPEC 108-151009	SIZE A3	CAGE CODE 00779	DRAWING NO G=W12P	RESTRICTED TO -		
MATERIAL PBT GF30 GREEN		FINISH -	APPLICATION SPEC 114-151009	SCALE 3:1		SHEET 1	OF 1	REV F
			CUSTOMER DRAWING; RESTRICTED CUSTOMER					

1. USED WITH DT04-12PX-XXXX RECEPTACLE
(X = A,B,C,D, KEY; XXXX = ALL MODIFICATIONS).