

M 282991-2K

SCHEDA TECNICA



© 2011 Connectiv. All Rights Reserved.

SECTION A-A
(SEZIONE A-A)

20 CAV. FOR NEW GENERATION
MULTILOCK RECEPTACLE
CONTACT P/N 284087-2, 284088-2
AND 284166-2
(20 CAV. PER CONTATTI FEMMINA
NUOVA GENERAZIONE MULTILOCK
P/N 284087-2, 284088-2 E 284166-2.)

SUPPLIED WITH SEC. LOCKING DEVICE
ON PRE-ASSEMBLED POSITION
(FORNITO CON IL DISPOSITIVO DI AGGANCIO
SECONDARIO IN POS. PRE-ASSEMBLATO)

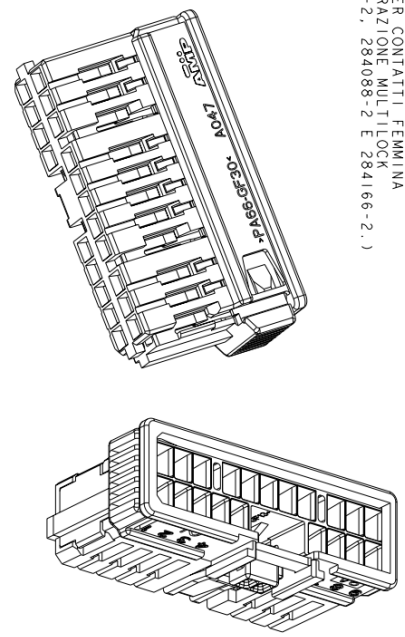
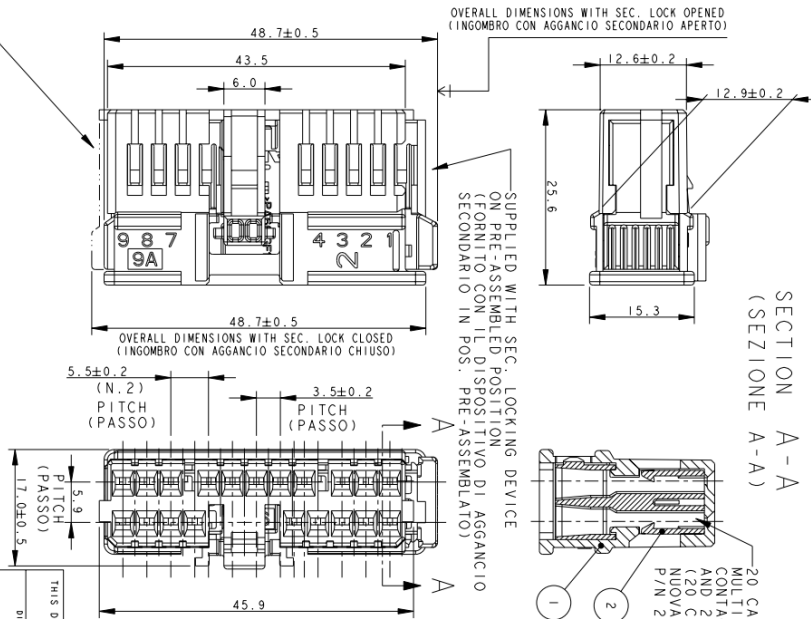
OVERALL DIMENSIONS WITH SEC. LOCK OPENED
(INGOMBRO CON AGGANCIO SECONDARIO APERTO)

OVERALL DIMENSIONS WITH SEC. LOCK CLOSED
(INGOMBRO CON AGGANCIO SECONDARIO CHIUSO)

FOR POLARIZATION DETAILS AND
COUNTERPARTS P/N'S SEE SHEET 2
(PER DETTAGLIO POLARIZZAZIONI E
P/N'S CONTROPARTI VEDERE FOGLIO 2)

REVISIONS

P	TR	DESCRIPTION	DATE	BY	APP
A4		REVISED PER ECO-20-003218	08/06/2010	AP	VA



THIS DRAWING IS A CONTROLLED DOCUMENT.

ITEM	DESCRIPTION (DESCRIZIONE)	FINISH/COLOR (FINITURA/COLORE)	MATERIAL (MATERIALE)	PART NUMBER (NUMERO)
2	RECEPTACLE HOUSING (BLOCCO, FONIA FEMMINA)	VED. FOGLIO 2	PA 66 G.F.	SEE SHEET 2 VED. FOGLIO 2
1	SEC. LOCKING DEVICE (AGGANCIO SECONDARIO)	VED. FOGLIO 2	PA 66 G.F.	SEE SHEET 2 VED. FOGLIO 2

282991-2 AS SHOWN (COME MOSTRATO)

DIMENSIONS:		TOLERANCES UNLESS OTHERWISE SPECIFIED	
0 P/C	MM	±0.3	±0.3
1 P/C	MM	±0.3	±0.3
2 P/C	MM	±0.3	±0.3
3 P/C	MM	±0.3	±0.3
4 P/C	MM	±0.3	±0.3
5 P/C	MM	±0.3	±0.3
6 P/C	MM	±0.3	±0.3
7 P/C	MM	±0.3	±0.3
8 P/C	MM	±0.3	±0.3
9 P/C	MM	±0.3	±0.3
10 P/C	MM	±0.3	±0.3
11 P/C	MM	±0.3	±0.3
12 P/C	MM	±0.3	±0.3
13 P/C	MM	±0.3	±0.3
14 P/C	MM	±0.3	±0.3
15 P/C	MM	±0.3	±0.3
16 P/C	MM	±0.3	±0.3
17 P/C	MM	±0.3	±0.3
18 P/C	MM	±0.3	±0.3
19 P/C	MM	±0.3	±0.3
20 P/C	MM	±0.3	±0.3

DESIGNER	QAMAR99	DATE	20/01/15
PRODUCT SPEC	108-20175	SCALE	2:1
APPLICATION SPEC	114-20098	SHEET	1 of 2
WEIGHT	8.0 g	REV	A4

STE TE Connectivity

20 POS. NEW GENERATION RECEPTACLE CONNECTOR for trucks

STE 900779-282991