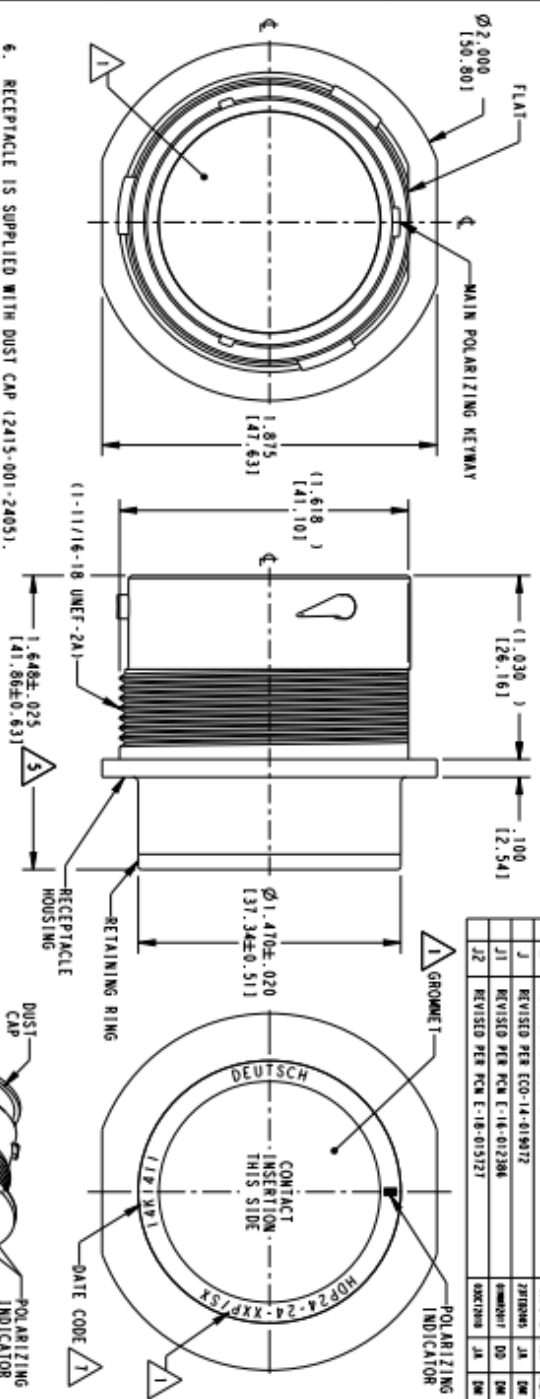




M HDP24-24-19P_

REVISIONI PER MODIFICAZIONE
 ALL'ESISTENTE
 2015

REV.	DATA	DESCRIZIONE	PROG.	APP.
H		REVISIO PER E.O P21391	15/09/12	AM ESN
J		REVISIO PER ECO-14-019072	27/09/14	JM ESM
J1		REVISIO PER ECO-16-012386	09/09/17	DS ESM
J2		REVISIO PER ECO-18-013127	06/07/18	JM ESM



- RECEPTACLE IS SUPPLIED WITH DUST CAP (2415-001-24051).
- NOTED DIMENSION DOES NOT INCLUDE GROMMET PROTRUSION.
- MATERIAL: RECEPTACLE HOUSING: PA66 GF10 (BLACK)
 RETAINING RING: PA66 GF10 (GREEN, GRAY, BLUE)
 GROMMET: SILICONE (ORANGE-RED)
- SEE 0425-021-0000 APPLICATION SPECIFICATION
- RECOMMENDED WIRE INSULATION RANGE
- CONTACT REMOVAL TOOLS
- RECOMMENDED MOUNTING HOLE & PANEL THICKNESS
- MOUNTING HARDWARE & MOUNTING TORQUE.
- THIS RECEPTACLE MATES WITH HDP26-24-XXP/SX-XXXX PLUG
- SEAL TYPE (N,T,E)
- INSERT ARRANGEMENT
- XXXX = MODIFICATION

DATE CODE: IDENTIFIES THE YEAR, MONTH, DAY AND HOUR OF ASSEMBLY.
 YEAR: FIRST AND SECOND DIGITS: (14 = 2014)
 MONTH: THIRD DIGIT, EXCLUDING 1, A = JANUARY
 B = FEB., C = MARCH, ... I = OCTOBER
 DAY: FOURTH AND FIFTH DIGITS (14 = 14th DAY)
 HOUR: SIXTH AND SEVENTH DIGITS (11 = 11AM)

SCALE 1:1

Customer Drawing

STE IE Connectivity

RECEPTACLE, THREADED
 SIZE 24
 HDP SERIES

0425-021-0000

3 AAF08 HDP24-24-XXP/SX

total 2-1 sheet 1 of 1

NOTES:

SEE CUSTOMER DRAWING, 0425-014-2400 FOR AVAILABLE INSERT ARRANGEMENTS AND PART NUMBERS.