

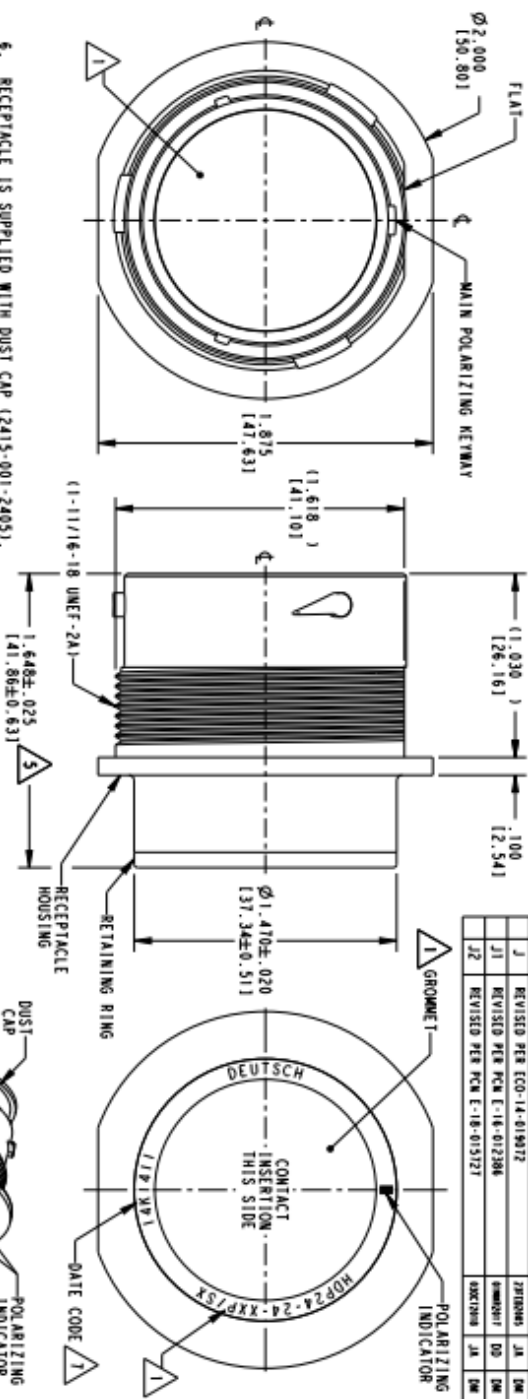


THIS DRAWING IS A CONTROLLED DOCUMENT. ALL RIGHTS RESERVED. 2015

REV. 01

REVISIONS

REV.	DESCRIPTION	DATE	BY	CHK
H	REVISIO PER E.O P21391			
J	REVISIO PER ECO-14-019172			
J1	REVISIO PER FCN E-18-012208			
J2	REVISIO PER FCN E-18-013121			



- RECEPTACLE IS SUPPLIED WITH DUST CAP (2415-001-24051).
- NOTED DIMENSION DOES NOT INCLUDE GROMMET PROTRUSION.
- MATERIAL: RECEPTACLE HOUSING: PA66 GF10 (BLACK) RETAINER RING: PA66 GF10 (GREEN, GRAY, BLUE) GROMMET: SILICONE (ORANGE-RED)
- SEE 0425-021-0000 APPLICATION SPECIFICATION
 - RECOMMENDED WIRE INSULATION RANGE
 - CONTACT REMOVAL TOOLS
 - RECOMMENDED MOUNTING HOLE & PANEL THICKNESS
 - MOUNTING HARDWARE & MOUNTING TORQUE.
- THIS RECEPTACLE MATES WITH HDP26-24-XXP/SX-XXXX PLUG
 - SEAL TYPE (N, I, E)
 - INSERT ARRANGEMENT
 - MODIFICATION

DATE CODE: IDENTIFIES THE YEAR, MONTH, DAY AND HOUR OF ASSEMBLY
 YEAR: FIRST AND SECOND DIGITS (1A = JAN., MONTH: THIRD DIGIT - EXCLUDING 1, A = JAN., B = FEB., C = MARCH, IX = OCTOBER), DAY: FOURTH AND FIFTH DIGITS (1A = 14TH DAY), HOUR: SIXTH AND SEVENTH DIGITS (11 = 11AM)

SCALE 1:1

THIS DRAWING IS A CONTROLLED DOCUMENT. SEE HEADLINE FOR CONTROL NUMBER.

STEVE HEADLINE
 DATE: 11/15/2007
 DRAWN BY: J. J. JAZZBOUR
 CHECKED BY: J. J. JAZZBOUR

RECEPTACLE, THREADED
 SIZE 24
 HDP SERIES

Customer Drawing

NOTES:

