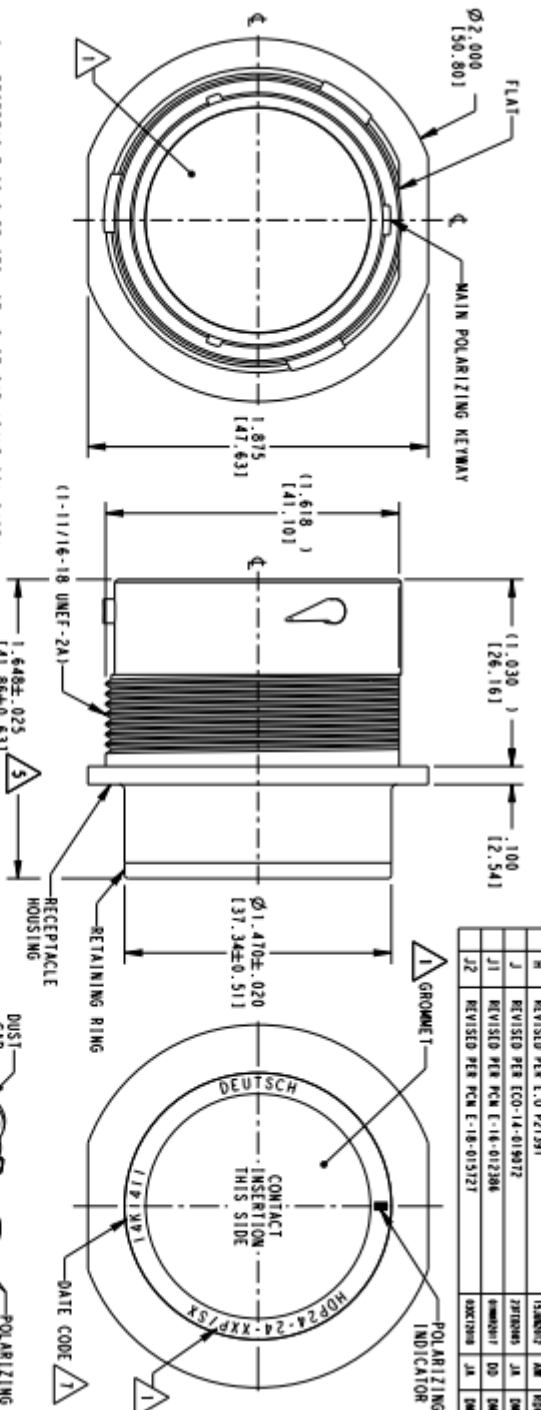




TYPE: 0425-021-0000
 CONSTRUCTION: 2415-001-24051
 MATERIAL: PAA6 GF10 (BLACK)
 RETAINER RING: PAA6 GF10 (GREEN, GRAY, BLUE)
 GROMMET: SILICONE (ORANGE-RED)

REV. 01
 DATE 2014-01-14

REV.	DATE	DESCRIPTION	BY	CHK
H	14/01/2014	REVISION PER E.O. P21391	J	EM
J	27/02/2015	REVISION PER ECO-14-019017	J	EM
J1	04/03/2017	REVISION PER PCN E-16-012386	DS	EM
J2	04/03/2018	REVISION PER PCN E-18-015127	DS	EM



- RECEPTACLE IS SUPPLIED WITH DUST CAP (2415-001-24051).
- NOTED DIMENSION DOES NOT INCLUDE GROMMET PROTRUSION.
- MATERIAL: RECEPTACLE HOUSING: PAA6 GF10 (BLACK)
 RETAINER RING: PAA6 GF10 (GREEN, GRAY, BLUE)
 GROMMET: SILICONE (ORANGE-RED)
- SEE 0425-021-0000 APPLICATION SPECIFICATION
 A. RECOMMENDED WIRE INSULATION RANGE
 B. CONTACT REMOVAL TOOLS
 C. RECOMMENDED MOUNTING HOLE & PANEL THICKNESS
 D. MOUNTING HARDWARE & MOUNTING TORQUE.
- THIS RECEPTACLE MATES WITH HDP26-24-XXP/SX-XXXX PLUG
 X = SEAL TYPE (N, I, E)
 XX = INSERT ARRANGEMENT
 XXXX = MODIFICATION

DATE CODE: IDENTIFIES THE YEAR, MONTH, DAY AND HOUR OF ASSEMBLY
 YEAR: FIRST AND SECOND DIGITS (14 = 2014)
 MONTH: THIRD DIGIT - EXCLUDING '1', A = JAN., B = FEB., C = MARCH, ... K = OCTOBER, L = NOVEMBER
 DAY: FOURTH AND FIFTH DIGITS (14 = 14TH DAY)
 HOUR: SIXTH AND SEVENTH DIGITS (11 = 11AM)

NOTES:
 1. SEE CUSTOMER DRAWING, 0425-014-2400 FOR AVAILABLE INSERT ARRANGEMENTS AND PART NUMBERS.

THIS DRAWING IS A CONTROLLED DOCUMENT.

DESCRIPTION:	CONNECTIONS:
RECEPTACLE HOUSING	0425-021-0000
RETAINER RING	0425-021-0000
GROMMET	0425-021-0000
DUST CAP	0425-021-0000
POLARIZING INDICATOR	0425-021-0000
CONTACT INSERTION	0425-021-0000

Customer Drawing