

M HDP 24-24-33PN-K

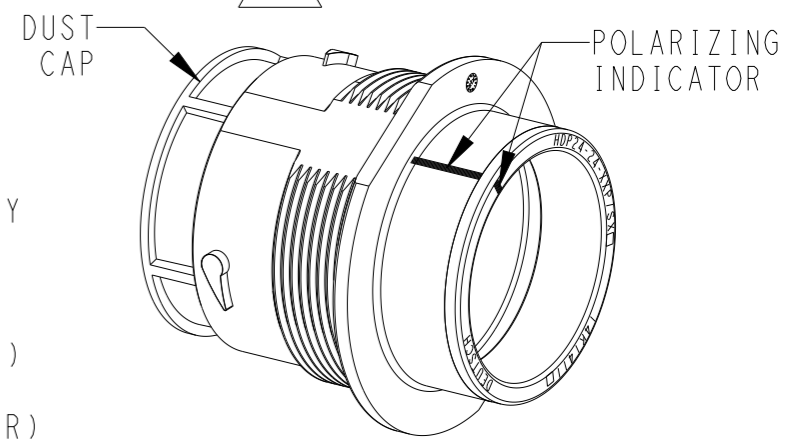
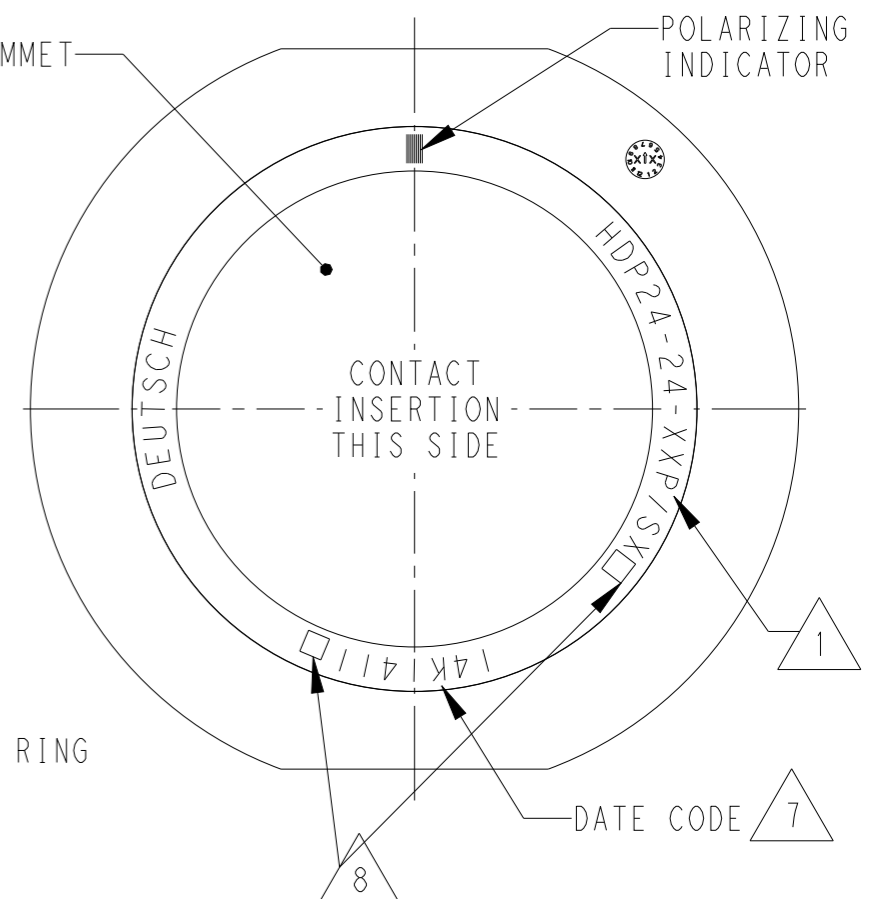
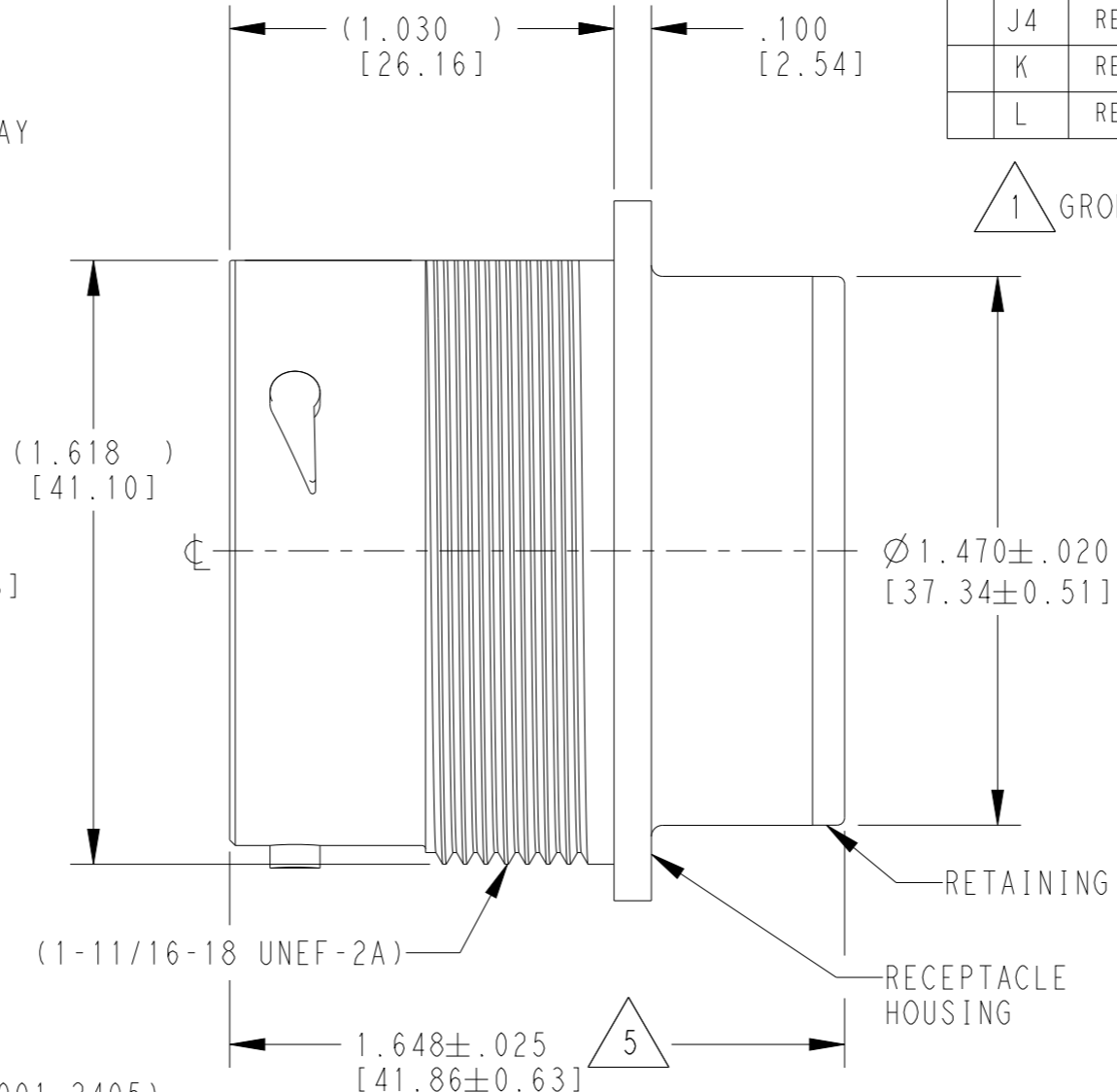
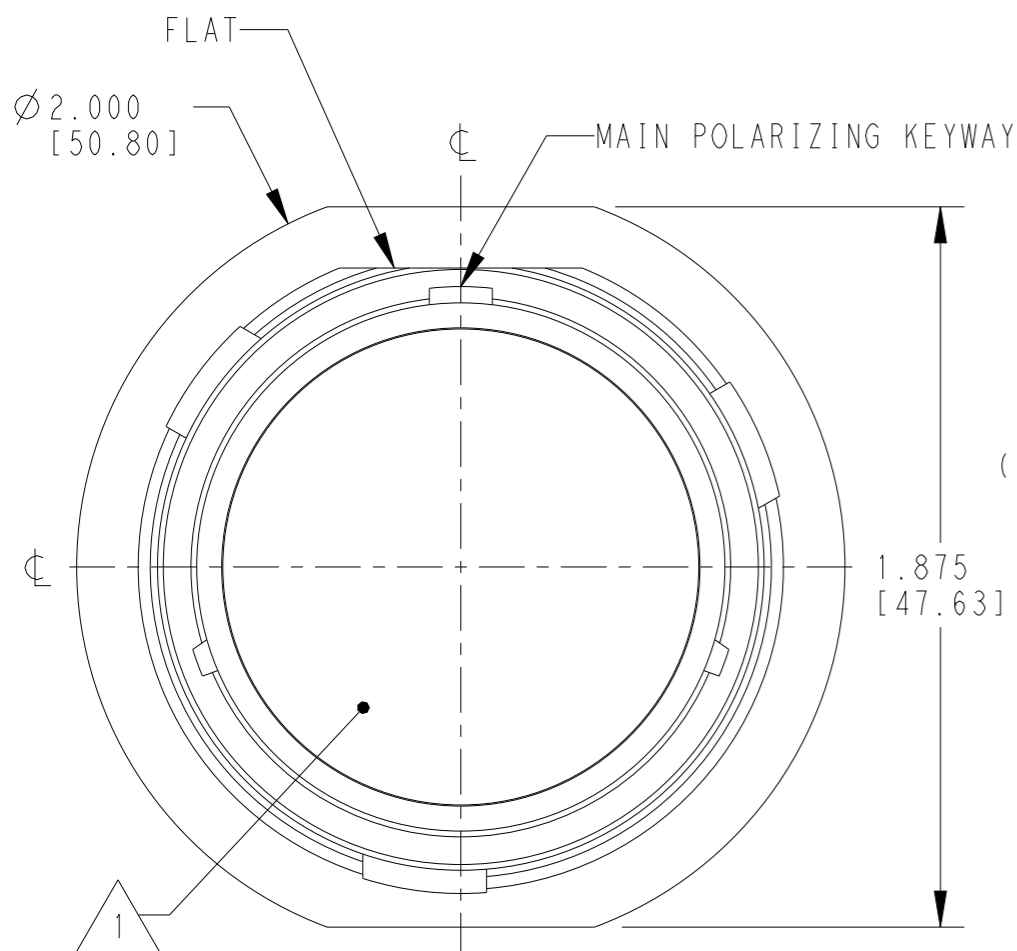


MINIKIT

Proseguire nella pagina successiva per visualizzare la scheda tecnica dei componenti

Revisione	Prodotto
REV.01 07/05/2026	OEM

LOC	DIST	REVISIONS			
P	LTR	DESCRIPTION	DATE	DWN	APVD
	J3	REVISED PER PCN-24-200566	19FEB2024	CO	CB
	J4	REVISED PER PCN-24-213773	02JUL2024	HD	CB
	K	REVISED PER PCN-24-219306	29AUG2024	CO	CB
	L	REVISED PER PCN-25-233228	18DEC2024	RK	CB



6. RECEPTACLE IS SUPPLIED WITH DUST CAP (2415-001-2405).

5 NOTED DIMENSION DOES NOT INCLUDE GROMMET PROTRUSION.

4 MATERIAL: RECEPTACLE HOUSING: PA66 GF10 (BLACK)
 RETAINER RING: PA66 GF10 (GREEN, GRAY, BLUE)
 GROMMET: SILICONE (ORANGE-RED)

3 SEE 0425-021-0000 APPLICATION SPECIFICATION
 A. RECOMMENDED WIRE INSULATION RANGE
 B. CONTACT REMOVAL TOOLS
 C. RECOMMENDED MOUNTING HOLE & PANEL THICKNESS
 D. MOUNTING HARDWARE & MOUNTING TORQUE.

2. THIS RECEPTACLE MATES WITH HDP26-24-XXP/SX-XXXX PLUG
 X = SEAL TYPE (N,T,E)
 XX = INSERT ARRANGEMENT
 XXXX = MODIFICATION

1 SEE CUSTOMER DRAWING, 0425-014-2400 FOR AVAILABLE INSERT ARRANGEMENTS AND PART NUMBERS.

8 LOCATIONS FOR TRACEABILITY WITNESS MARKS ONLY
 7 DATE CODE: IDENTIFIES THE YEAR, MONTH, DAY AND HOUR OF ASSEMBLY.
 YEAR: FIRST AND SECOND DIGITS. (14 = 2014)
 MONTH: THRID DIGIT, EXCLUDING I. A = JAN., B = FEB., C = MARCH... (K = OCTOBER)
 DAY: FOURTH AND FIFTH DIGITS (14 = 14th DAY)
 HOUR: SIXTH AND SEVENTH DIGITS (11 = 11AM)

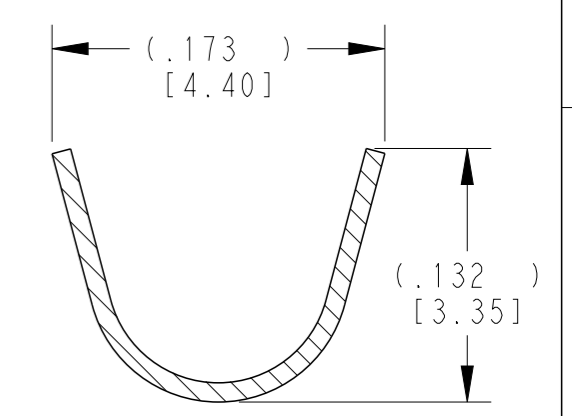
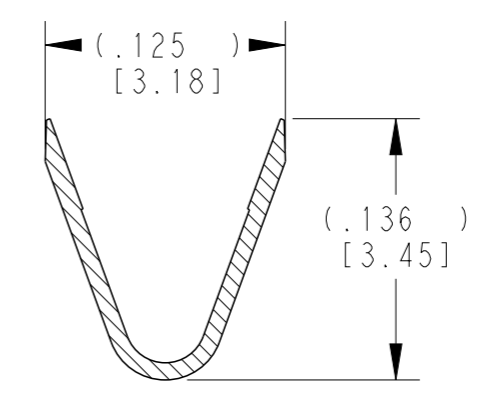
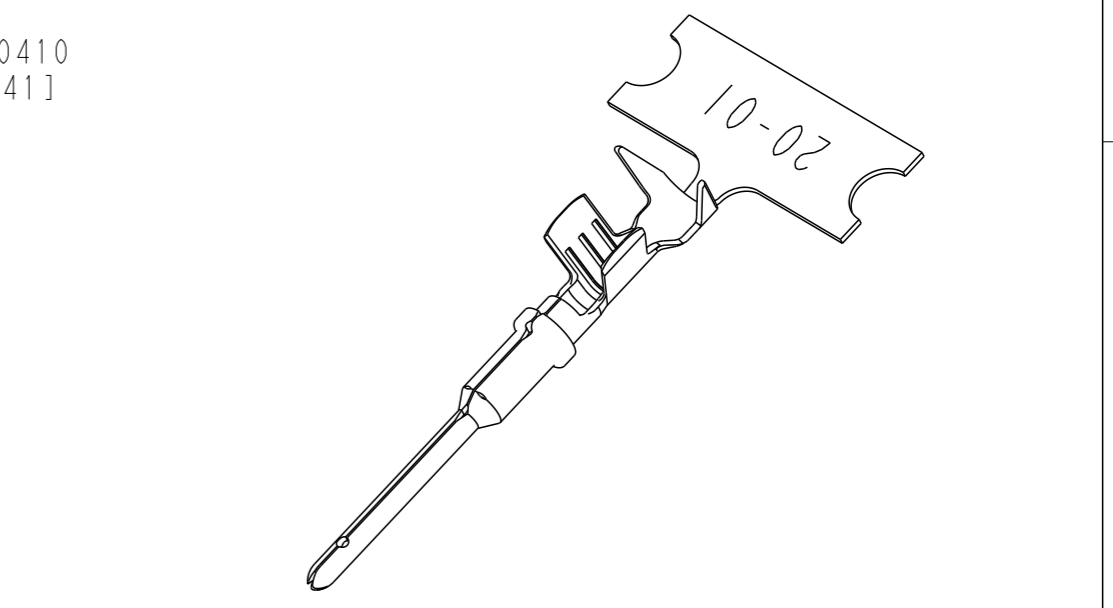
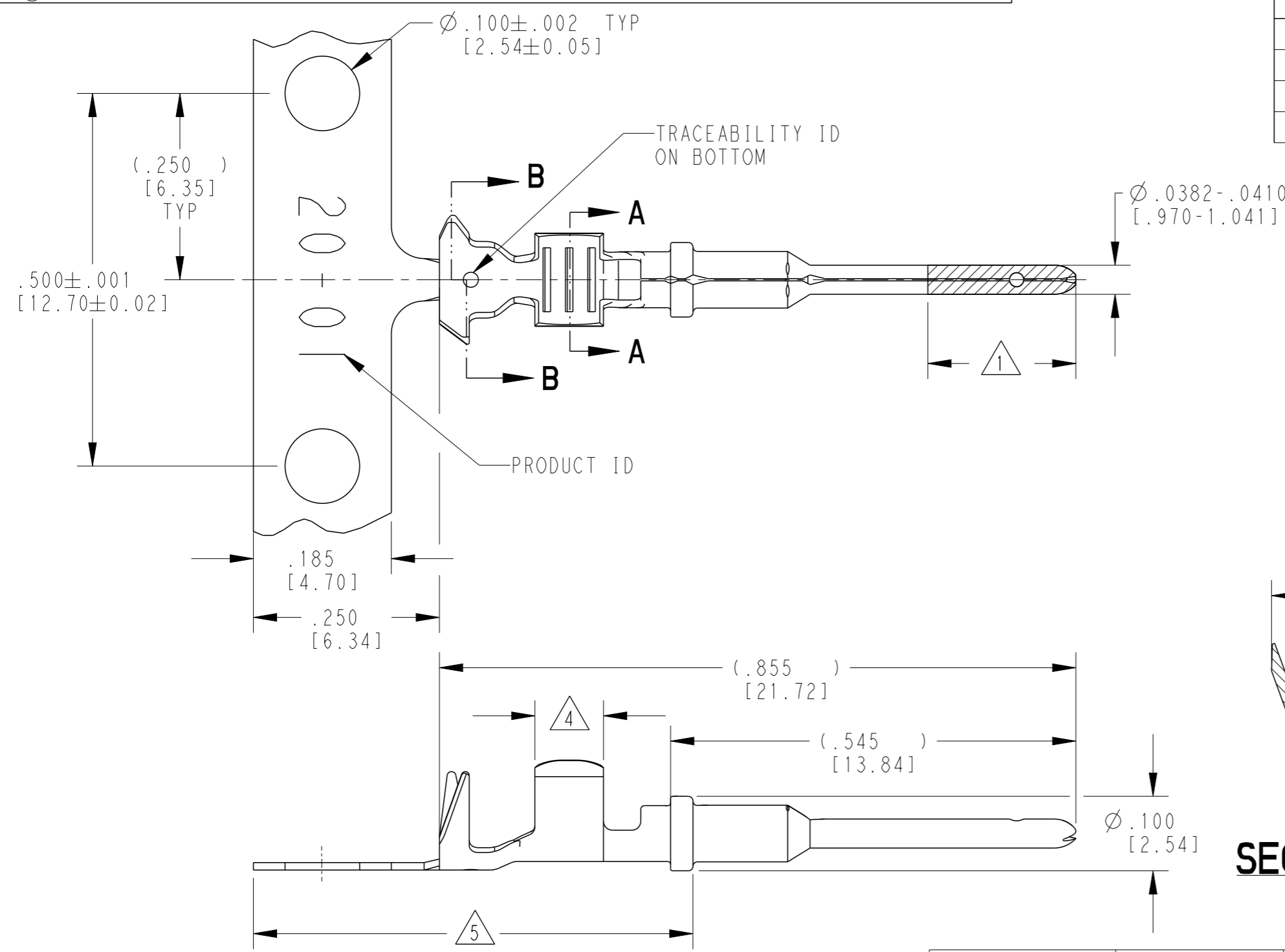
SCALE 1:1

NOTES:

THIS DRAWING IS A CONTROLLED DOCUMENT.		DWN 03MAR2000 STEVE BEARD	TE Connectivity													
		CHK 04FEB2004 JUNE LIM														
DIMENSIONS: INCHES [mm]		APVD 16JAN2004 STEVE BEARD	NAME RECEPTACLE, THREADED SIZE 24 HDP SERIES													
TOLERANCES UNLESS OTHERWISE SPECIFIED:		PRODUCT SPEC 0425-021-0000	SIZE A3 CAGE CODE 4AFU8 DRAWING NO. HDP24-24-XXP/SX RESTRICTED TO -													
<table border="0"> <tr> <td>0 PLC</td> <td>±</td> </tr> <tr> <td>1 PLC</td> <td>±</td> </tr> <tr> <td>2 PLC</td> <td>±</td> </tr> <tr> <td>3 PLC</td> <td>±.015 [0.38]</td> </tr> <tr> <td>4 PLC</td> <td>±</td> </tr> <tr> <td>ANGLES</td> <td>±0°30'0"</td> </tr> </table>		0 PLC	±	1 PLC	±	2 PLC	±	3 PLC	±.015 [0.38]	4 PLC	±	ANGLES	±0°30'0"	APPLICATION SPEC 3		
0 PLC	±															
1 PLC	±															
2 PLC	±															
3 PLC	±.015 [0.38]															
4 PLC	±															
ANGLES	±0°30'0"															
MATERIAL 4		FINISH N/A	SCALE 2:1 SHEET 1 OF 1 REV L													
		WEIGHT	Customer Drawing													

THIS DRAWING IS UNPUBLISHED. RELEASED FOR PUBLICATION 2018
 © COPYRIGHT 2018 BY TE ALL RIGHTS RESERVED.

P	LTR	DESCRIPTION	DATE	DWN	APVD
E		REVISED PER E.O. P20392	03DEC2009		RDR
F		REVISED PER PCN E-18-007949	23MAY2018	DD	DM
G		REVISED PER PCN-24-210586	10JUN2024	PS	DM
G1		REVISED PER PCN-25-234384	31JAN2025	RK	CB



- 5 TIN PLATING MAY BE IN THIS REGION.
- 4 TIN PLATED REGION.
- 3 MATERIAL: .010 [0.25] THICK COPPER ALLOY.
- 2 WIRE RANGE: 22 AWG TO 16 AWG [0.35-1.50 mm²].
INSULATION RANGE: Ø.075-.125 [Ø1.91-3.18].
- 1 GOLD PLATED REGION.

NOTES: UNLESS OTHERWISE SPECIFIED

TE INTERNAL PN	DEUTSCH PN	REV	PLATING
1060-20-0122	1060-20-0122	L	Ni/Cu Overall
1060-20-0144	1060-20-0144	L	Selective Au, Ni/Cu Overall, Sn/Ni/Cu Wire Barrel
1060-20-0177	1060-20-0177	L	Sn/Ni/Cu Overall

THIS DRAWING IS A CONTROLLED DOCUMENT.		DWN J. APOSTOL 01DEC2009	TE Connectivity	
DIMENSIONS: INCHES [mm]		CHK D. MEYER 02DEC2009		
TOLERANCES UNLESS OTHERWISE SPECIFIED:		APVD R. REED 03DEC2009	NAME PIN, STAMPED CONTACT SIZE 20 16-22 AWG, .075-.125 INS	
0 PLC ± 1 PLC ± 2 PLC ± 3 PLC ±.025 [0.64] 4 PLC ± ANGLES ±		PRODUCT SPEC 108-151000	SIZE A3	
MATERIAL 3		APPLICATION SPEC 114-151003	CAGE CODE 4AFU8	DRAWING NO 1060-20-01XX
FINISH SEE TABLE		WEIGHT 0.16 g	RESTRICTED TO -	SCALE 6:1
		CUSTOMER DRAWING	SHEET 1 OF 1	REV G1