

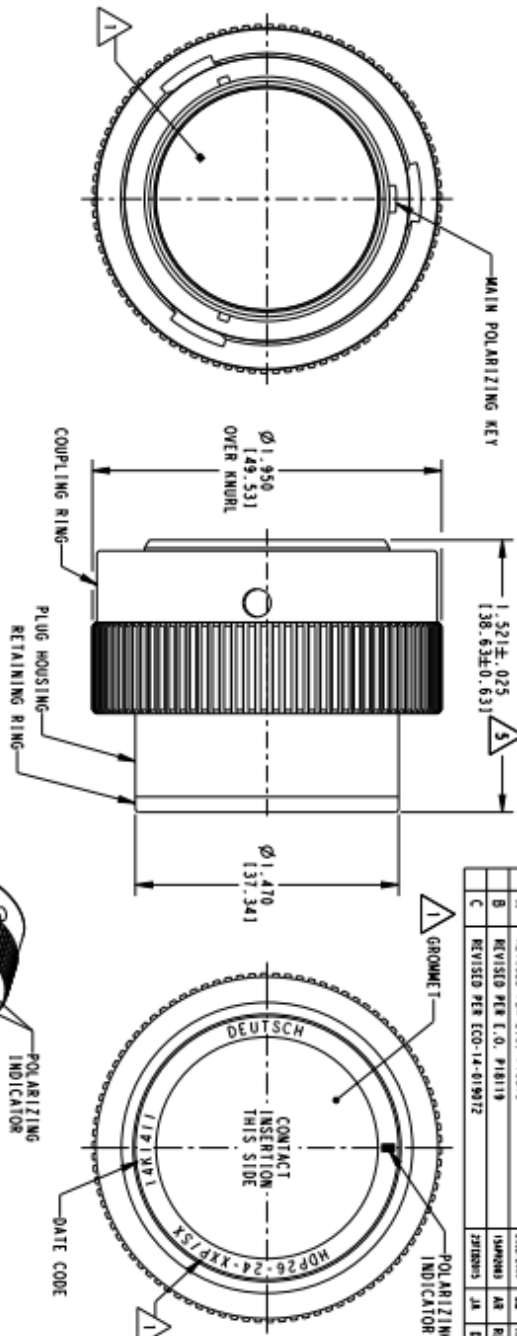


TYPE DRAWING - DISEGNO TIPO
 CONFORME ALLA
 PR. DI CONNETTIVITÀ
 RECIPROCA PER POLARIZZAZIONE
 ALL. 18/19/20/21/22/23/24/25/26/27/28/29/30/31/32/33/34/35/36/37/38/39/40/41/42/43/44/45/46/47/48/49/50/51/52/53/54/55/56/57/58/59/60/61/62/63/64/65/66/67/68/69/70/71/72/73/74/75/76/77/78/79/80/81/82/83/84/85/86/87/88/89/90/91/92/93/94/95/96/97/98/99/100

LOC. 0101

REVISIONS

REV.	DESCRIPTION	DATE	BY	CHK
INC	NEW RELEASE PER E.O. P18512			
A	REVISED PER E.O. P18015			
B	REVISED PER E.O. P18119			
C	REVISED PER ECO-14-019912			



- 3 NOTED DIMENSION DOES NOT INCLUDE GROUOMET PROTRUSION.
- 4 MATERIAL: PLUG HOUSING/COUPLING RING: PA66 GF10 (BLACK) RETAINER RING: PA66 GF10 (GREEN, GRAY, BLUE) GROUOMET: SILICONE (ORANGE-RED)
- 3 SEE 0425-021-0000 APPLICATION SPECIFICATION
 A. RECOMMENDED WIRE INSULATION RANGE
 B. CONTACT REMOVAL TOOLS

2. THIS PLUG MATES WITH HDP24-24XXP/SX-XXXX RECEPTACLE
 X = SEAL TYPE (N, T, E)
 XX = INSERT ARRANGEMENT
 XXXX = MODIFICATION

1. SEE CUSTOMER DRAWING 0425-014-2400 FOR AVAILABLE INSERT ARRANGEMENTS AND PART NUMBERS.

SCALE 1:1



THIS DRAWING IS A CONTROLLED DOCUMENT

REVISIONS	INCHES (mm)	DATE	BY	CHK
1	0.0000	01/10/2003	ALME C.	
2	0.0000	01/10/2003	ALME C.	
3	0.0000	01/10/2003	ALME C.	
4	0.0000	01/10/2003	ALME C.	
5	0.0000	01/10/2003	ALME C.	
6	0.0000	01/10/2003	ALME C.	
7	0.0000	01/10/2003	ALME C.	
8	0.0000	01/10/2003	ALME C.	
9	0.0000	01/10/2003	ALME C.	
10	0.0000	01/10/2003	ALME C.	

Customer Drawing

0425-021-0000

PLUG, COUPLING RING

HDP SERIES

HDP26-24-XXP/SX

mes connettori