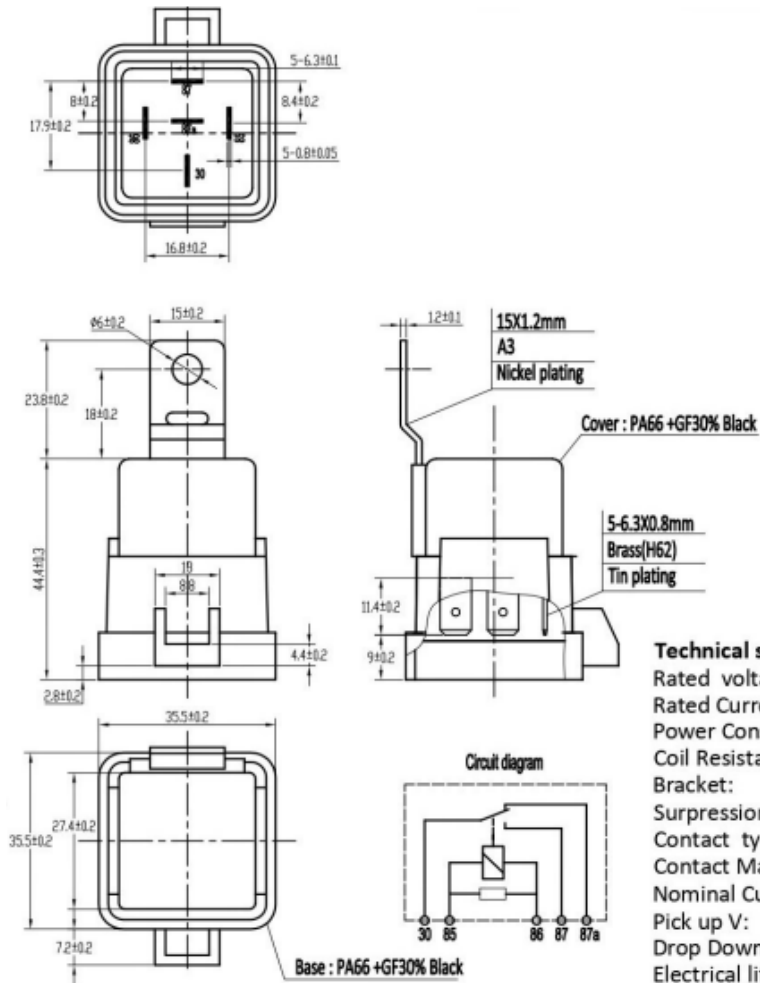


M STD2451020RST

SCHEDA TECNICA

relè 24V 10/20A in scambio a tenuta stagna con resistenza



Technical specs:	
Rated voltage:	24V;
Rated Current:	67mA
Power Consumption:	1.6W;
Coil Resistance:	360 ± 36Ω at 23°C;
Bracket:	Optional bracket;
Suppression:	with 2700 OHM resistor;
Contact type:	Change over Contact;
Contact Material:	Silver Alloy;
Nominal Current:	10/20A;
Pick up V:	≤15.6V;
Drop Down:	≥3.0V
Electrical life :	100,000;
Mechanical life :	1,000,000;
Temperature Range:	-40°C+85°C;
Pulling time:	7ms approx;
Drop out time:	5ms approx;
Weight:	42g. approx;
Insulation Resistance:	100M ohm Min (500V DC)

